

L624-
A.10.15

To: Official After Sales Network
Subject: Software Update Of Headlight Alignment Adjustment Control Unit (AFS)
Date: 02/20/2015
Pages: 16



Subject

Software update of headlight alignment adjustment control unit (AFS).

Model

All Lamborghini Huracán 2015 From VIN FLA00163 to FLA02206

Warning: some vehicles included in this VIN range may not be involved, so check carefully on the Lamborghini WEB Portal (at the section named VIN Info) if the cars in your workshop or in your dealer stock are involved before performing any other operation.

Information to the field

As a result of continuous product monitoring, Automobili Lamborghini Spa has found that on some vehicles the high beam warning light sporadically may flash.

Field solution

Update the software that manage AFS control unit

Warranty Claim data

The warranty reimbursement request for this rework action will be managed by the following standard Warranty Claim procedures.

Campaign Code: L624-A.10.15
Campaign Des.: AFS software update
Cost code: 50
Component code: CCA1015
Trouble code: 220
Labor code: CCA1015100
Labor Time: 0,3h

Remember to fill all data in the section “Service and Recall Campaign” in the Warranty booklet of the vehicle as shown below.

Workshop instructions



The instructions contained in this bulletin are based on ODIS Service diagnosis software updated to release 2.2.3 and database Lamborghini 19.63 (see information bulletin BI.16.14)

Preliminary operations:

1. Make sure to be recently synchronized with Mirrorserver by checking the Last Sync date under:

<http://mirrorserver/welcome>

or under:

http://IP_address/welcome

if you didn't yet set up the mirrorserver IP alias



IMPORTANT

Make sure the last synchronization has been done after the 16th February 2015.

Rev.01

The information and procedures published below are strictly confidential and intended exclusively for authorized operators and individuals. All copyrights are the property of Automobili Lamborghini S.p.A based on copyright law. The company reserves the right to make updates and modifications. The reprinting, reproduction, forwarding to unauthorized people and/or to third parties and partial or entire translation thereof are prohibited without written authorization from Automobili Lamborghini S.p.A.

doc. nr: L/V6_M06 Rev.[02]

1/16



Congratulations

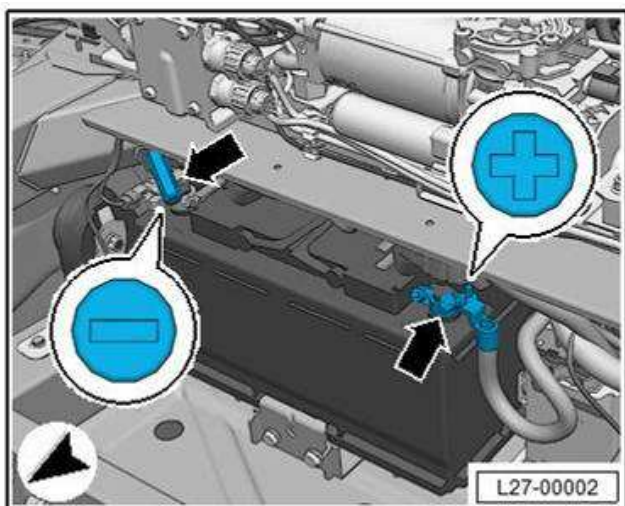
You have successfully installed your MirrorServer/2 NOS-Box.

Testing the connection to the configured Provider Server. Please wait a moment, this takes some time ...

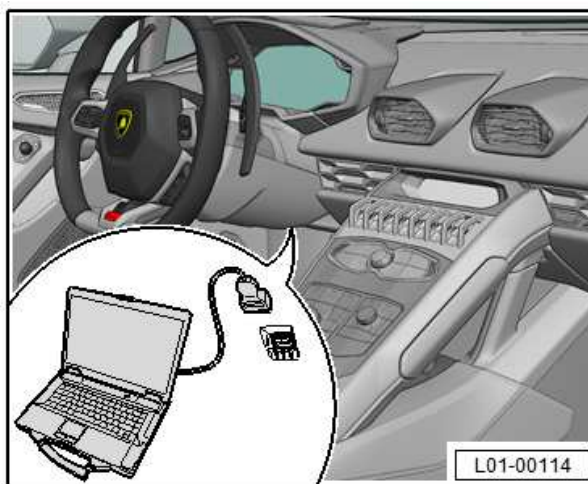
Configuration	
Base path	/var/www/desert
Provider URL	https://altair.mirrorserver2.net/development
Repository URL	https://altair.mirrorserver2.net/storage
Feedback URL	https://altair.mirrorserver2.net/health
Proxy	http://svc_blackbox? @10.48.187.43:8080
Key file	/var/www/desert/certs/userkey.pem
Certificate	/var/www/desert/certs/usercert.pem
Tests	
Provider WebDAV access	OK (/deployment/)
Repository WebDAV access	OK (/storage/)
Feedback WebDAV access	OK (/health/)
Successful package downloads	5
Failed package downloads	0
Last Sync	16-02-15 at 22:46:02

Update procedure:

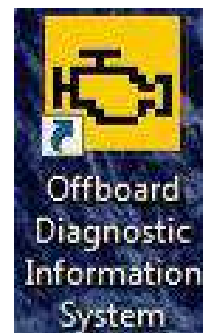
- Please connect a battery charger to the recharge points available in the front luggage compartment, as shown in picture.



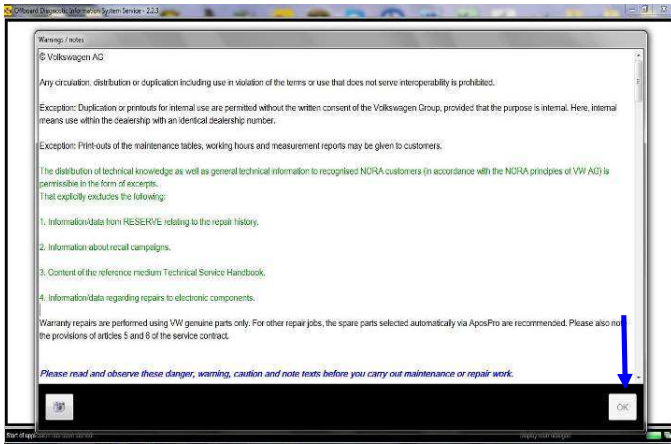
- Please connect the VAS5054 interface to the vehicle's OBD plug and to the diagnostic laptop.
Turn the ignition ON



- Start the ODIS Service double clicking on the related icon on the desktop of the diagnosis laptop.



- Scroll down the right side vertical bar. Click on "OK" to hide the general information window.

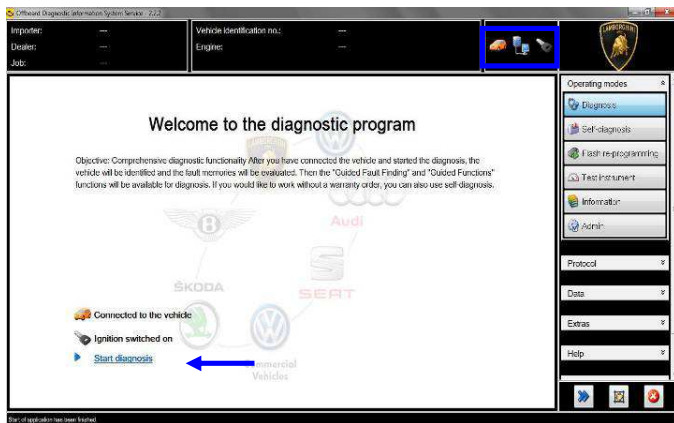


6. Select “Start diagnosis”.



Make sure that ODIS can detect the vehicle connection status and the key ON.

Click “cancel” to each eventual Login to group systems.

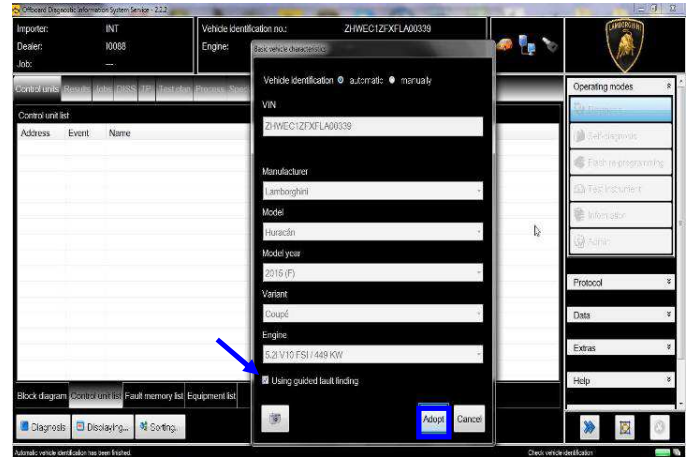


7. Check the vehicle identification on the window “Basic vehicle characteristics”.

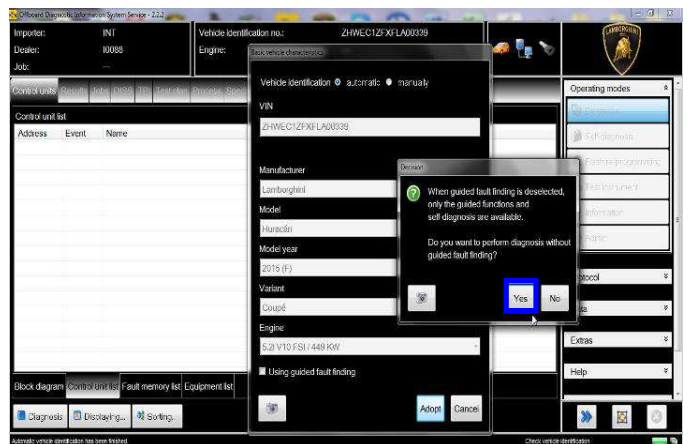
Select the Variant in the related menu

Deselect the checkbox “Using guided fault finding”

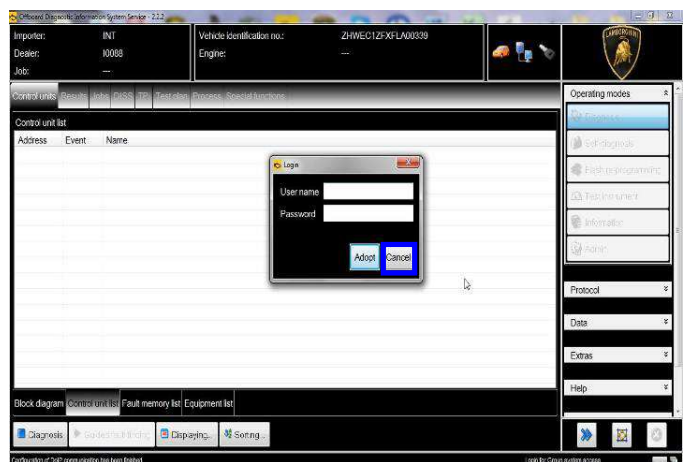
Click “Adopt”



8. Click “Yes”



9. Skip the Login window by clicking “Cancel”

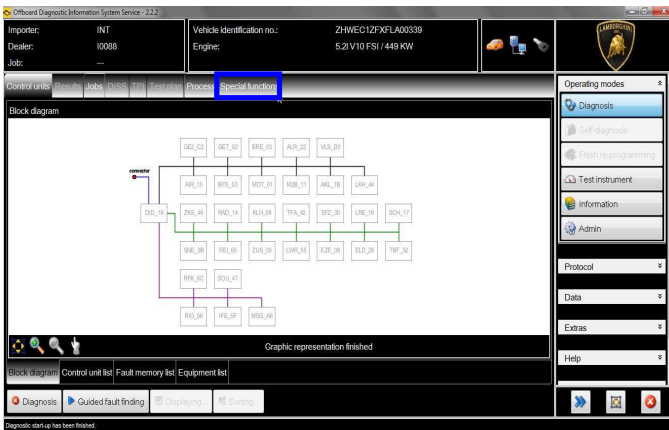


L624-
A.10.15

To: Official After Sales Network
Subject: Software Update Of Headlight Alignment Adjustment Control Unit (AFS)
Date: 02/20/2015
Pages: 16

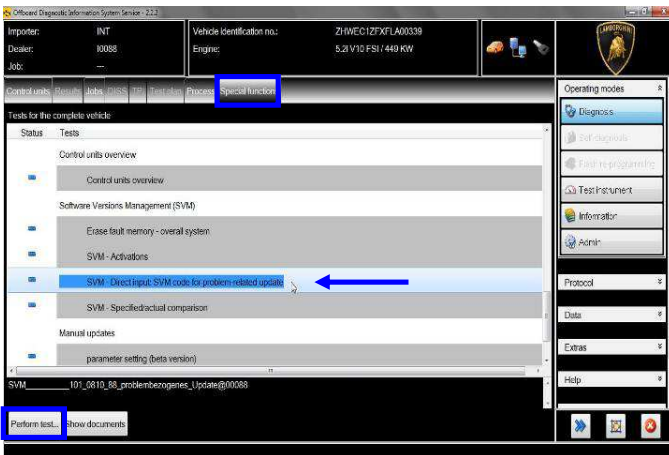


10. At the end of start-up procedure (see status in the progress bar bottom right), move on the ODIS tab “Special functions” now available.



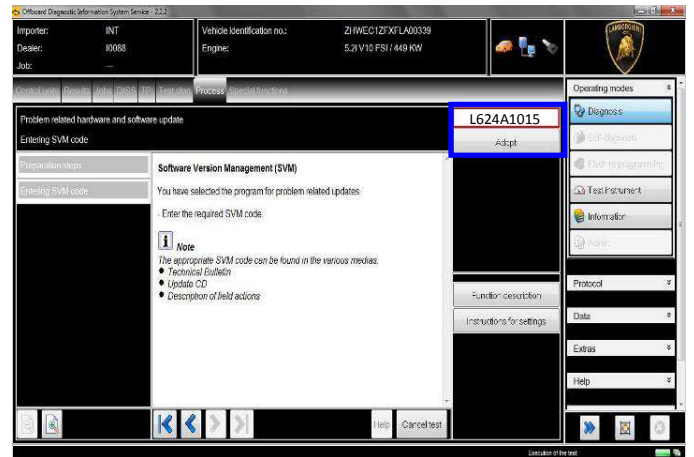
11. Select “SVM – Direct input: SVM code for problem related update” by clicking the related row with the mouse.

Click “Perform test...” to execute the SVM function



12. Insert in the upper box with the cursor the code **L624A1015**

Click “Adopt”



13. Confirm that the inserted code is correct clicking on “Yes”.



14. Click on “Done/Continue” to start the data acquisition from all the vehicle’s ECUs.



IMPORTANT

Connect always a battery charger during the SVM function

L624-
A.10.15

To: Official After Sales Network
Subject: Software Update Of Headlight Alignment Adjustment Control Unit (AFS)
Date: 02/20/2015
Pages: 16



15. Wait until the data acquisition from all control modules is completed.



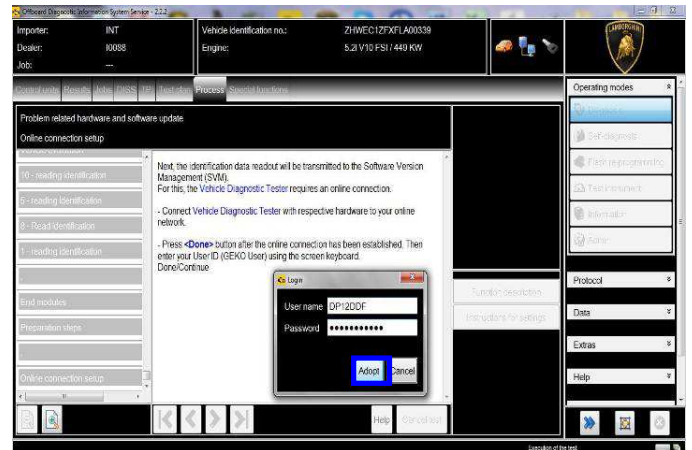
16. For the online authentication a valid GeKo account is necessary.

Be sure that your internet connection is working properly.

Click on “Done/Continue” to access the Login window.

Insert your GeKo user name in the field “Login” and the pin 1324 + current 6 digit code displayed on your GeKo token in the field Password.

Then confirm clicking on “Adopt”.



17. The communication is then established with the central server.

At the end of communication you receive following feedback:

“-software to be update has been detected (on 1 control unit).”

Click “Done/Continue”.



18. AFS System Software Update

The example in the figure below refer to software part number and version of the Headlight regulation AFS control unit Software.

4T0907357A; 0003

Rev.01

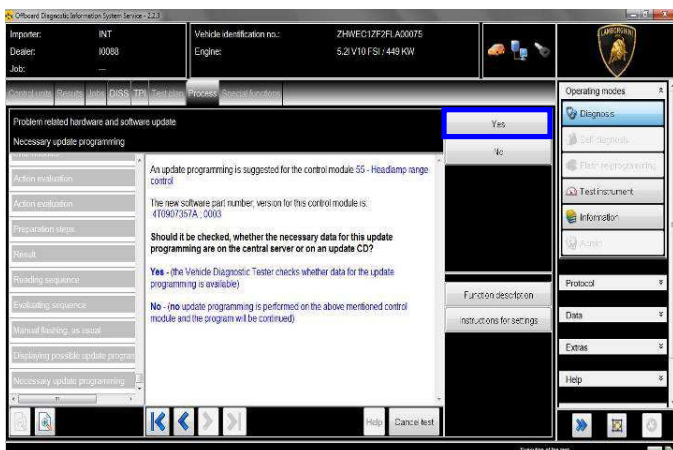
The information and procedures published below are strictly confidential and intended exclusively for authorized operators and individuals. All copyrights are the property of Automobili Lamborghini S.p.A based on copyright law. The company reserves the right to make updates and modifications. The reprinting, reproduction, forwarding to unauthorized people and/or to third parties and partial or entire translation thereof are prohibited without written authorization from Automobili Lamborghini S.p.A.

doc. nr: L/V6_M06 Rev.[02]

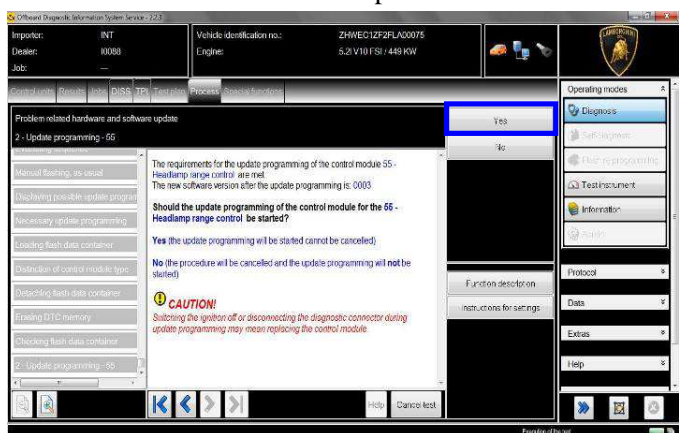
5/16



Click “Yes” to check the availability of the updated software on Your Mirrorserver.



19. Verify the new software data on the AFS system ecu and click “Yes” to update.



IMPORTANT

Do not disconnect hardware interface from OBD plug and do not switch ignition OFF during the software update!

20. Wait until the update programming of the Headlight regulation AFS system ECU is completed.

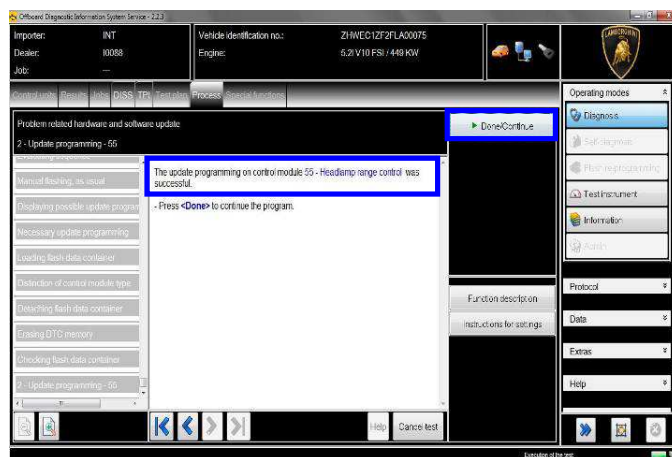


21. Once the update programming has been completed successfully a feedback as in the picture below is displayed.

Click “Done/Continue”.

If the update programming has not been completed or has been unsuccessful:

- turn the ignition OFF;
- wait 1 minute before turning the ignition ON again;
- if offered by the program: select “Repeat” to retry the update programming, otherwise repeat the procedure from step 11.



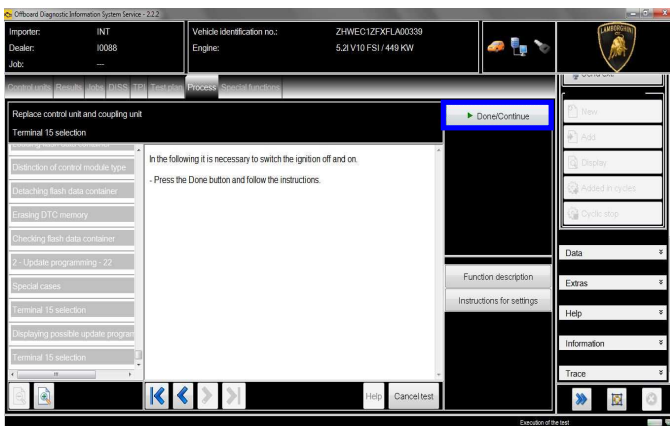
L624-
A.10.15

To: Official After Sales Network
Subject: Software Update Of Headlight Alignment Adjustment Control Unit (AFS)
Date: 02/20/2015
Pages: 16



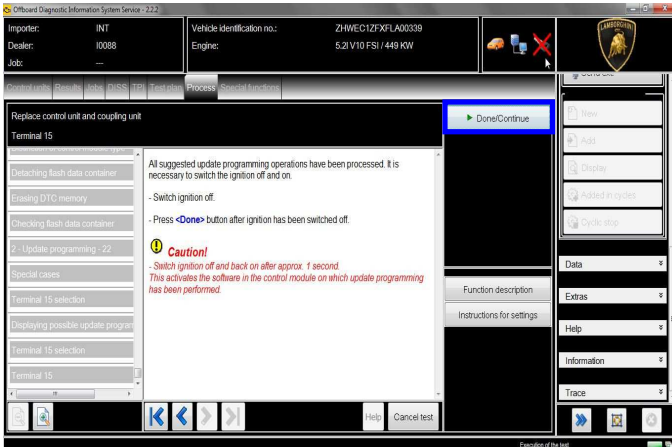
22. In the following an ignition OFF – ON cycle is necessary to restart the ECU.

Press “Done/Continue” to continue.



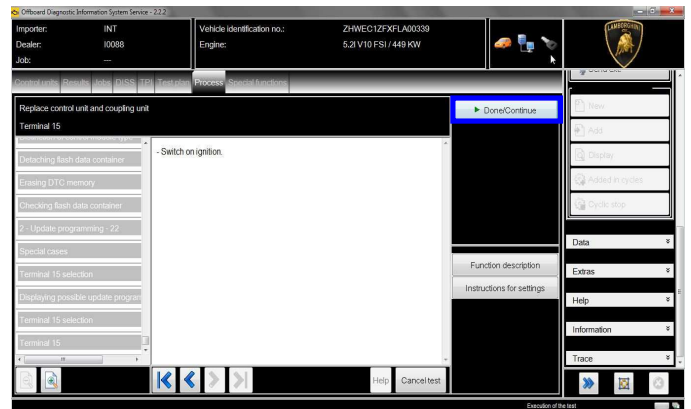
23. Switch the ignition OFF.

Press “Done/Continue”.



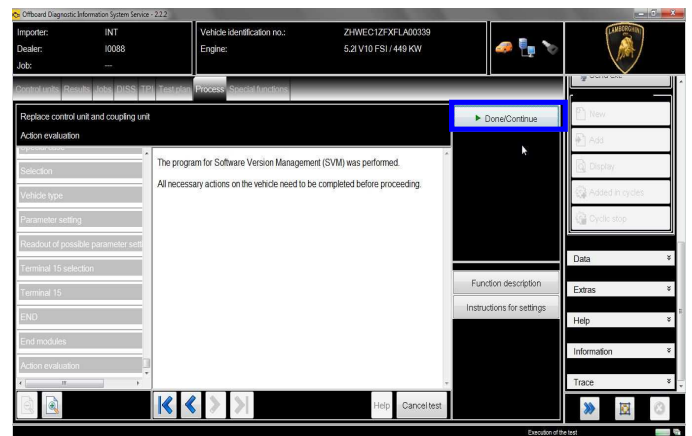
24. Switch the ignition ON.

Press “Done/Continue”.



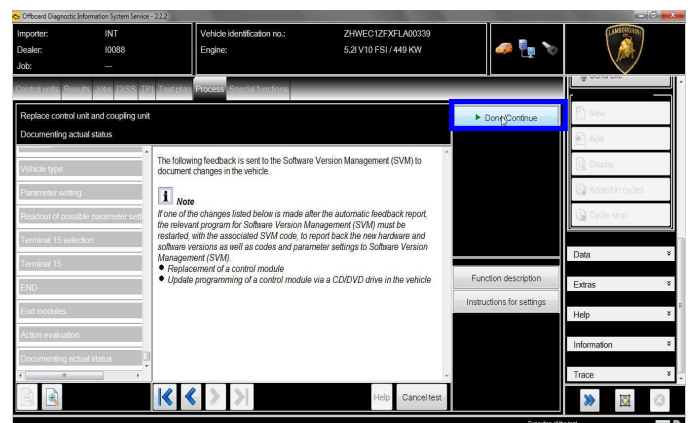
25. Complete the SVM function

Press “Done/Continue”.



26. SVM can be completed after data acquisition from all ECUs.

Click “Done/Continue”.



Rev.01

The information and procedures published below are strictly confidential and intended exclusively for authorized operators and individuals. All copyrights are the property of Automobili Lamborghini S.p.A based on copyright law. The company reserves the right to make updates and modifications. The reprinting, reproduction, forwarding to unauthorized people and/or to third parties and partial or entire translation thereof are prohibited without written authorization from Automobili Lamborghini S.p.A.

doc. nr: L/V6_M06 Rev.[02]

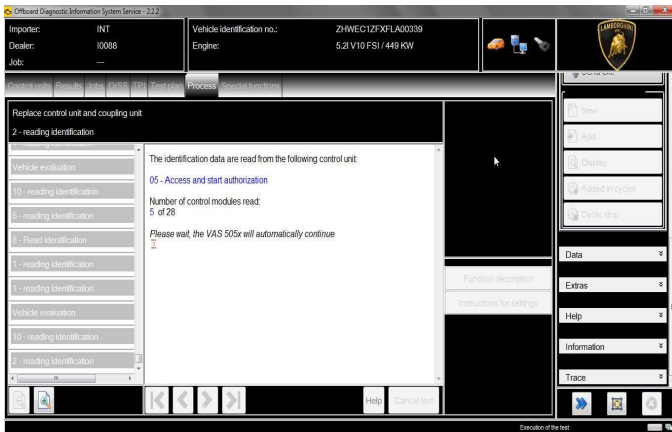
7/16

L624-
A.10.15

To: Official After Sales Network
Subject: Software Update Of Headlight Alignment Adjustment Control Unit (AFS)
Date: 02/20/2015
Pages: 16

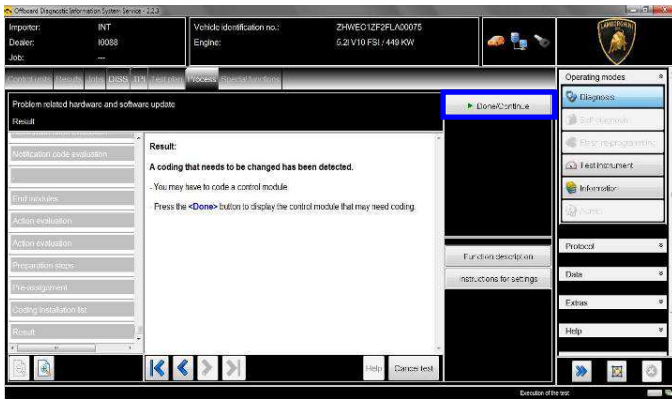


27. Wait until the data acquisition from all the control modules is completed.



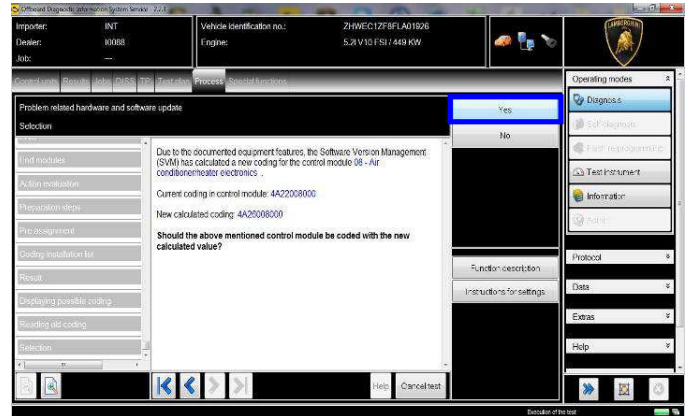
28. New coding has been detected.

Click "Done/Continue".



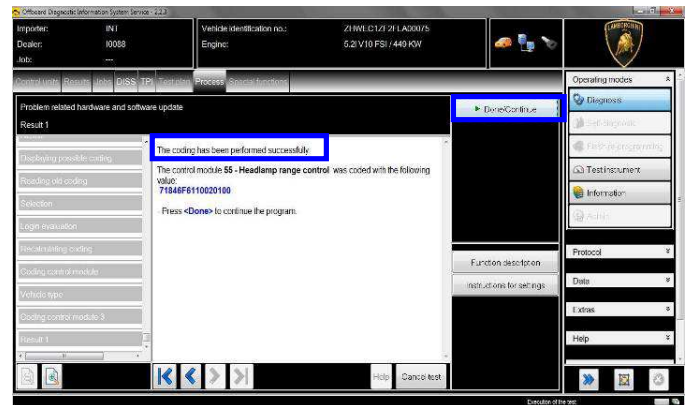
29. New coding has been calculated on the 55 – Headlight Regulation AFS system and must be written in the control unit.

Click "Yes".



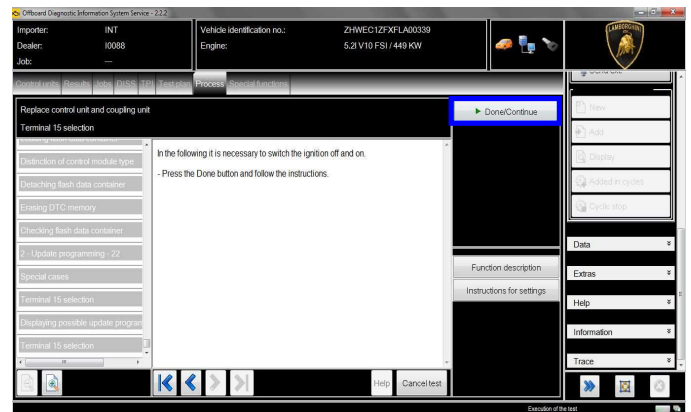
30. At the end of the coding update a feedback is displayed as in the below figure.

Click "Done/Continue".



31. In the following an ignition OFF – ON cycle is necessary to restart the ECU.

Press "Done/Continue" to continue.



Rev.01

The information and procedures published below are strictly confidential and intended exclusively for authorized operators and individuals. All copyrights are the property of Automobili Lamborghini S.p.A based on copyright law. The company reserves the right to make updates and modifications. The reprinting, reproduction, forwarding to unauthorized people and/or to third parties and partial or entire translation thereof are prohibited without written authorization from Automobili Lamborghini S.p.A.

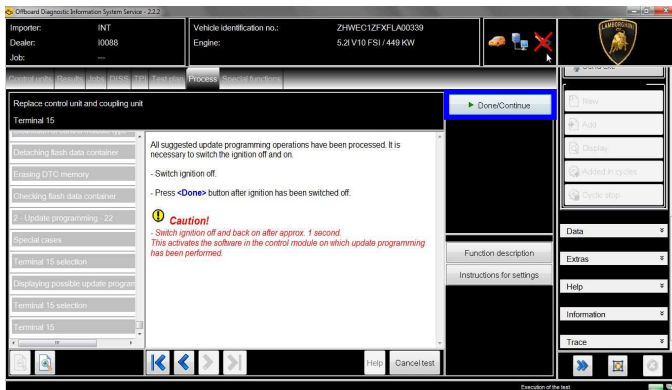
8/16

doc. nr: L/V6_M06 Rev.[02]



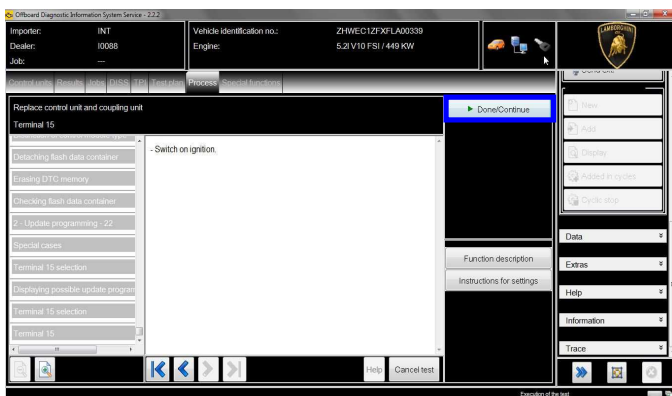
32. Switch the ignition OFF.

Press "Done/Continue".



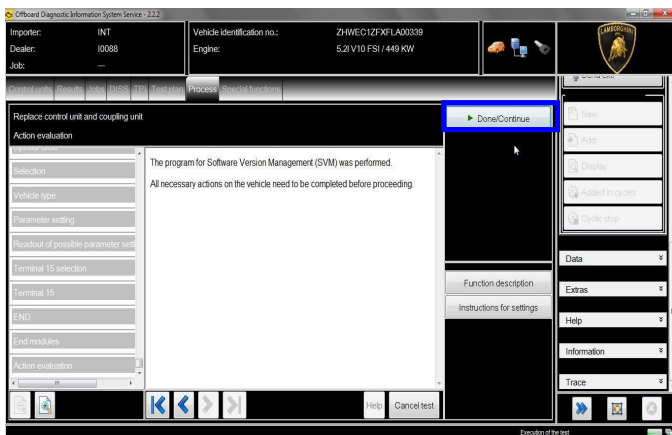
33. Switch the ignition ON.

Press "Done/Continue".



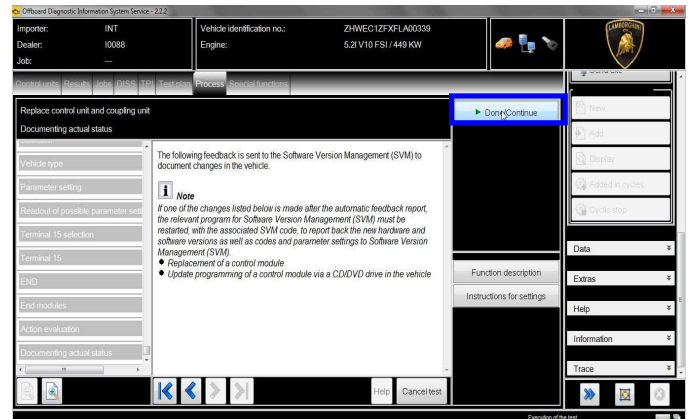
34. Complete the SVM function

Press "Done/Continue".

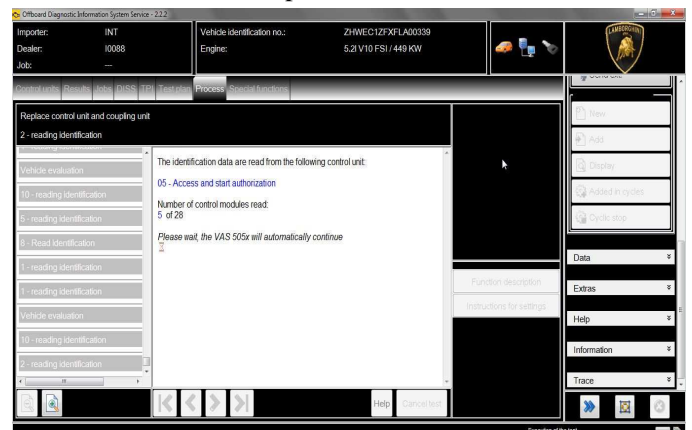


35. SVM can be completed after data acquisition from all ECUs.

Click "Done/Continue".



36. Wait until the data acquisition from all the control modules is completed.



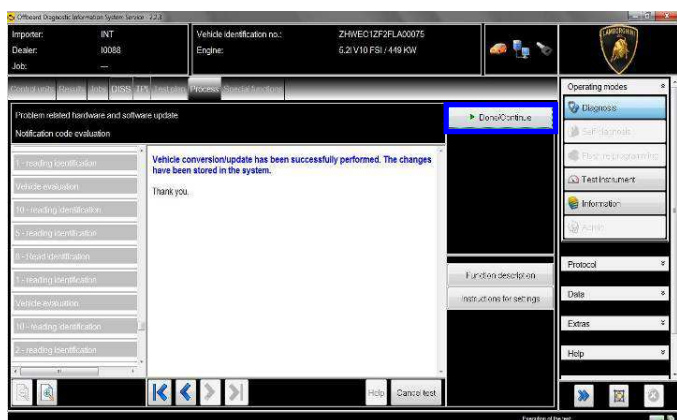
37. Once the data report has been sent to the servers a feedback as in the picture below is displayed.

The software update of Air conditioner/Klima Ecu has been completed successfully and all the information have been stored in the system.

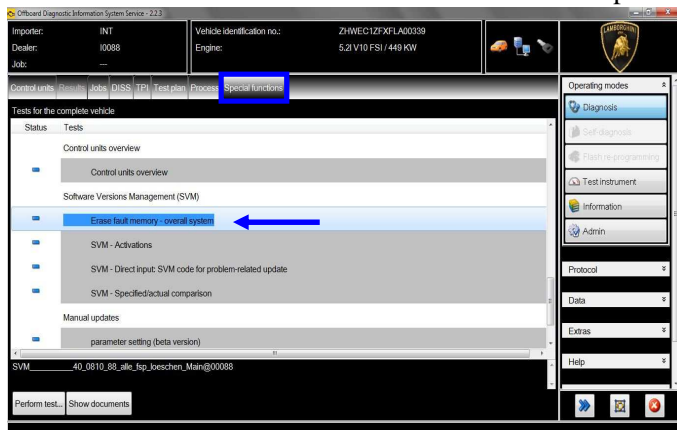
Press "Done/Continue" to exit the program.

L624-
A.10.15

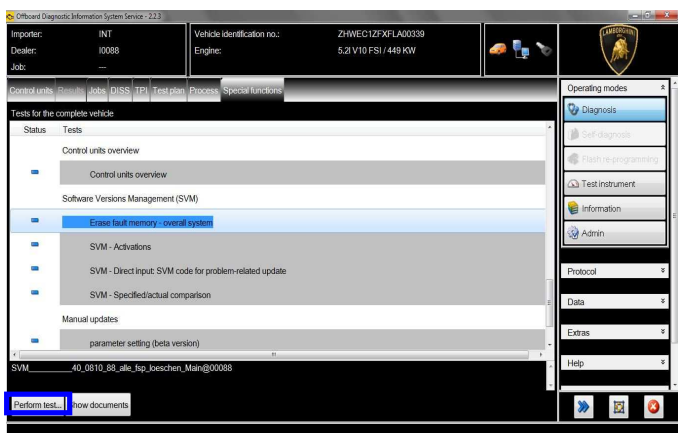
To: Official After Sales Network
Subject: Software Update Of Headlight Alignment Adjustment Control Unit (AFS)
Date: 02/20/2015
Pages: 16



38. Once finished the update and quitted the software update (SVM) function, go back to the tab “Special functions” to select “Erase fault memory – overall system”: it is necessary to clear all the faults stored because of the recent software update.



39. Execute the program “Erase fault memory – overall system” clicking on “Perform test...”



40. Eventual static errors won't be deleted.



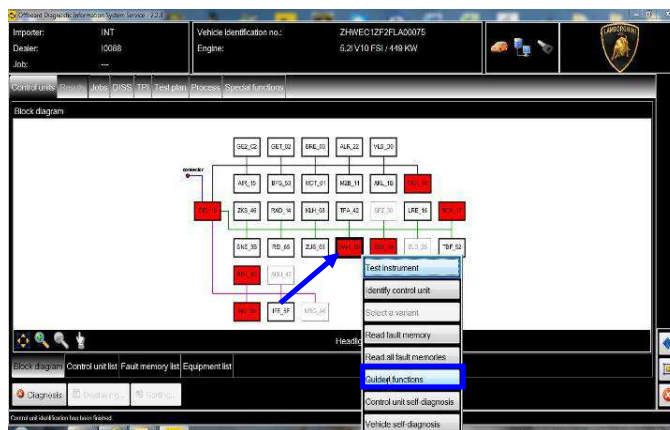
IMPORTANT

To remove the error present on the Headlight Regulation control unit, the AFS Basic Setting has to be performed.

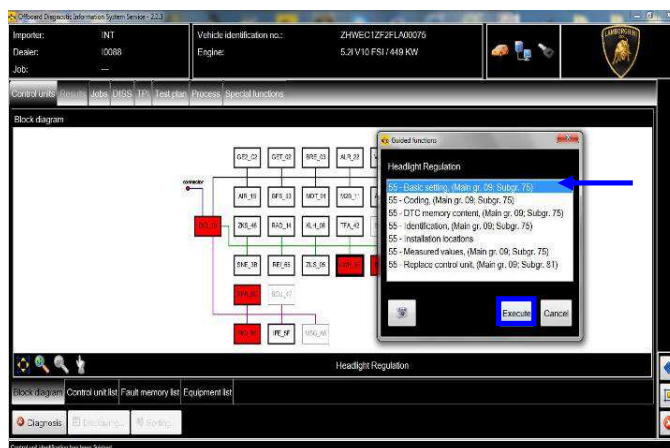
4 Headlight Regulation (55 - Headlamp range control) (4T0907357A 0003 ...AFS13... 4H4907357A H01)
393989 C107E54 Headlight No basic setting (10001001 active/static)

41. Basic Settings ECU 55 – AFS System

Select 55 – Guided Functions to enter in AFS Guided Functions.



42. Select 55 – Basic setting to execute the AFS basic setting.



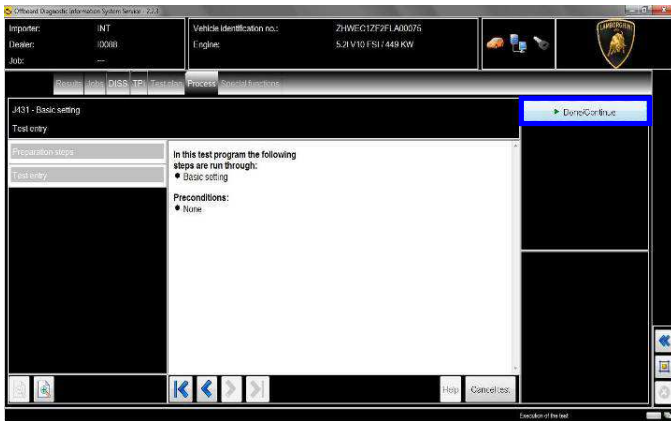
L624-
A.10.15

To: Official After Sales Network
Subject: Software Update Of Headlight Alignment Adjustment Control Unit (AFS)
Date: 02/20/2015
Pages: 16



Click "Execute".

43. Click "Done/Continue"

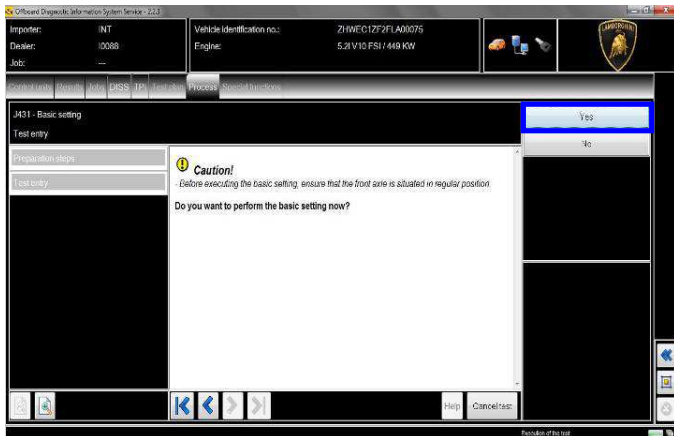


44. Click "Yes"



IMPORTANT

Make sure the Lifting System (is present on the car) is in regular – down position.



45. Click "Done/Continue" to perform a memory DTC reading on AFS ECU.



46. Basic setting in progress: adjust now manually the headlight regulation following the Workshop Manual indications, only if needed.



The AFS software update doesn't change the headlight regulation, therefore no manual operation is needed in this step.



Click "Done/Continue".

47. Click "Yes"

Rev.01

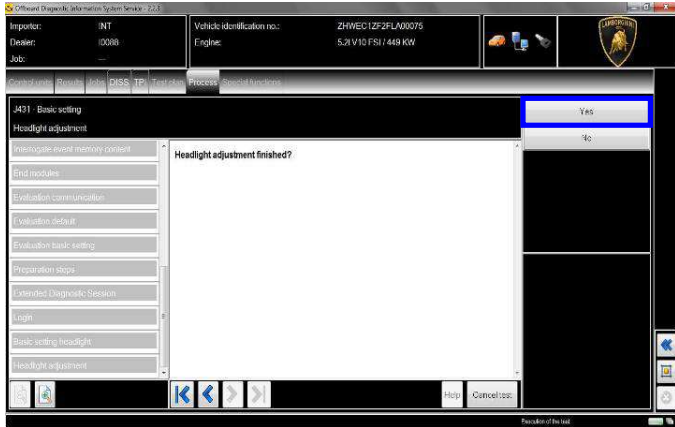
The information and procedures published below are strictly confidential and intended exclusively for authorized operators and individuals. All copyrights are the property of Automobili Lamborghini S.p.A based on copyright law. The company reserves the right to make updates and modifications. The reprinting, reproduction, forwarding to unauthorized people and/or to third parties and partial or entire translation thereof are prohibited without written authorization from Automobili Lamborghini S.p.A.

11/16

doc. nr: L/V6_M06 Rev.[02]

L624-
A.10.15

To: Official After Sales Network
Subject: Software Update Of Headlight Alignment Adjustment Control Unit (AFS)
Date: 02/20/2015
Pages: 16



IMPORTANT

In the case status errors are still present after the Headlight regulation Basic setting, repeat the procedure starting from step 11.

48. Wait the erase of all errors in AFS control unit.



49. Click "Done/Continue" to end the basic setting.



Rev.01

The information and procedures published below are strictly confidential and intended exclusively for authorized operators and individuals. All copyrights are the property of Automobili Lamborghini S.p.A based on copyright law. The company reserves the right to make updates and modifications. The reprinting, reproduction, forwarding to unauthorized people and/or to third parties and partial or entire translation thereof are prohibited without written authorization from Automobili Lamborghini S.p.A.

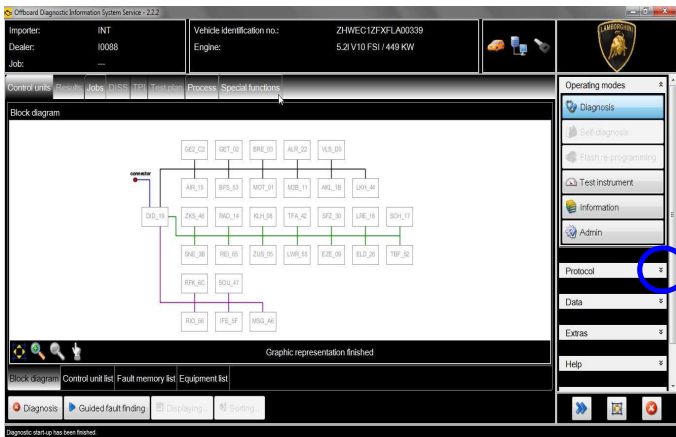
doc. nr: L/V6_M06 Rev.[02]

12/16



Diagnosis Protocol Saving procedure:

- At the end of previous steps, expand the menu "Protocol" on the right side (menu bar).

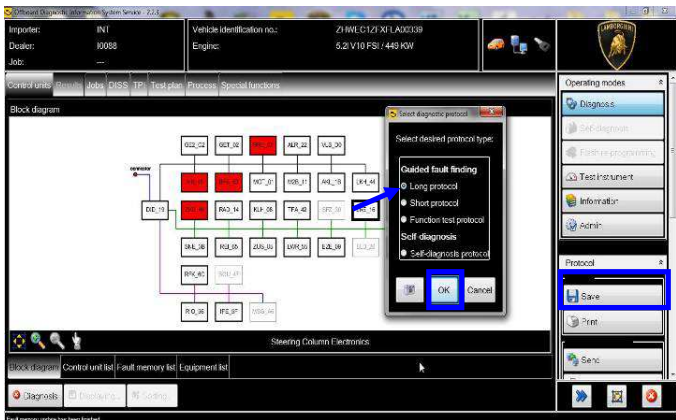


- Click "Save" in the subgroup of buttons "General".

In the diagnosis protocol window under GFF select:

- Long protocol.**

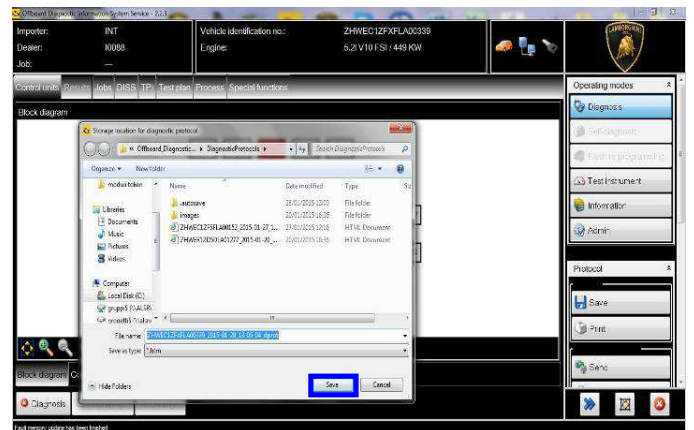
By clicking on it. Then click "OK".



- Select the position where you want to save the diagnosis protocol on your diagnosis laptop. (default path can be changed under Admin and is set under ODIS Service installation folder).
 Diagnosis protocol format is internet (.htm).
 Click "Save" to save the protocol.



Click "Print" in the subgroup of buttons "General" to print the protocol directly on a pdf file (if available Adobe pdf) or in paper format by sending to an installed network printer



- The diagnosis protocol has to be attached to the related Warranty Claim (in order to insert the claim on the Web Portal, please refer to Warranty Claim Manual you can find under the Portal, Warranty section).

L624-
A.10.15

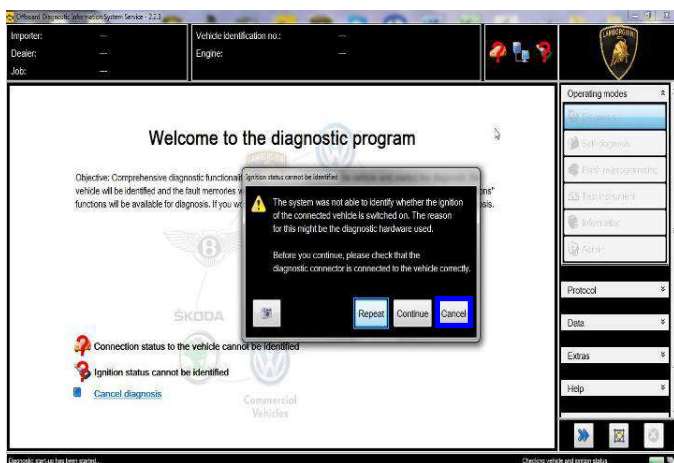
To: Official After Sales Network
Subject: Software Update Of Headlight Alignment Adjustment Control Unit (AFS)
Date: 02/20/2015
Pages: 16



Trouble shooting:

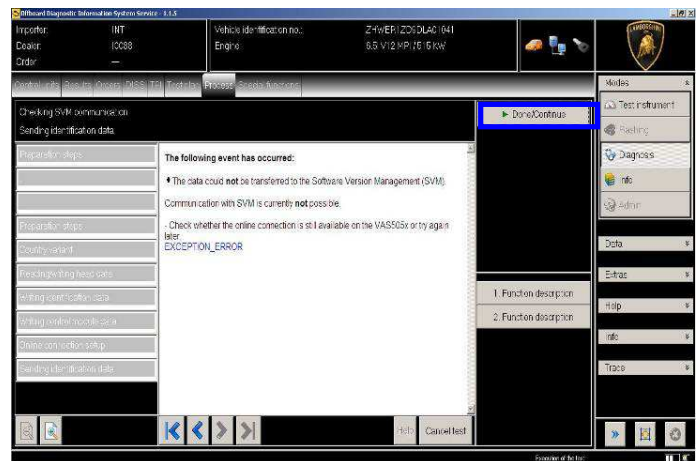
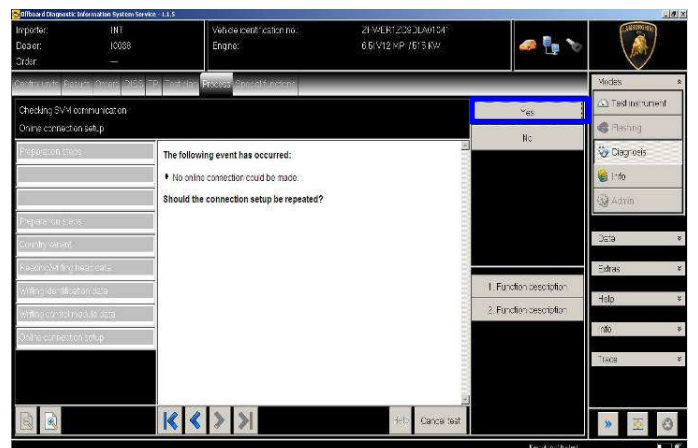
A. If the error message regarding the VAS5054 interface and the 2 icons for status of on board connection and key on are shown as in the picture below:

- Click “Cancel”;
- Repeat the VAS5054 HW interface installation following the procedure (*) “VCI Manager v2.0”, by entering in the menu “Extras” on the right side and clicking on “Diagnostic interface”.



B. If one of the connection errors screens is shown as in the pictures below:

- it is not possible to establish a connection with the central server. Please check carefully that the diagnosis laptop is properly connected to the internet network and retry clicking “Yes” or “Done/Continue”.

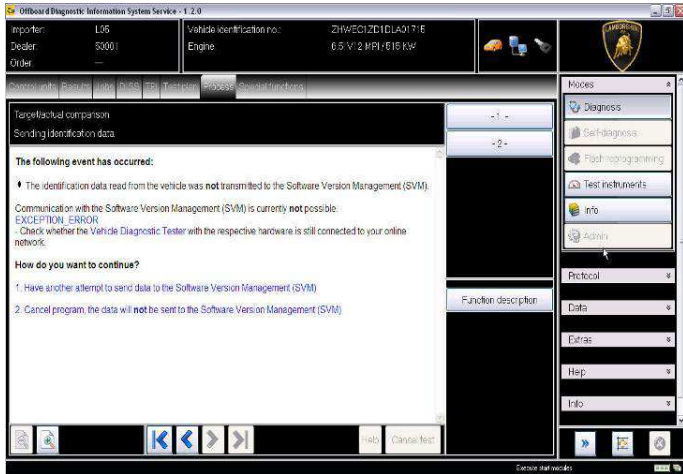


C. If the loss of connection happens during the target/actual comparison.

- It is not possible to connect to central server, check the working connection of internet and retry by clicking “1”.

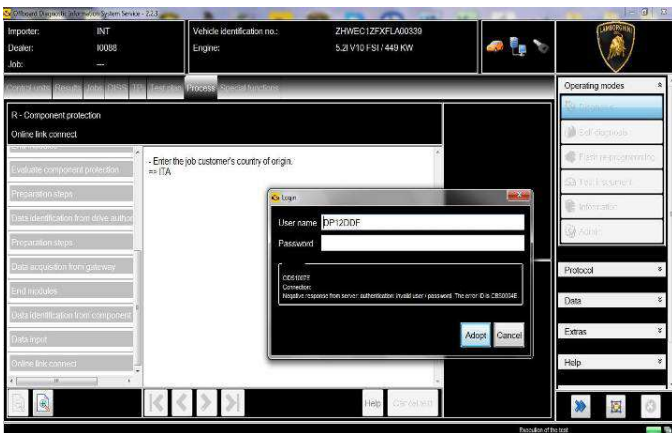
L624-
A.10.15

To: Official After Sales Network
Subject: Software Update Of Headlight Alignment Adjustment Control Unit (AFS)
Date: 02/20/2015
Pages: 16



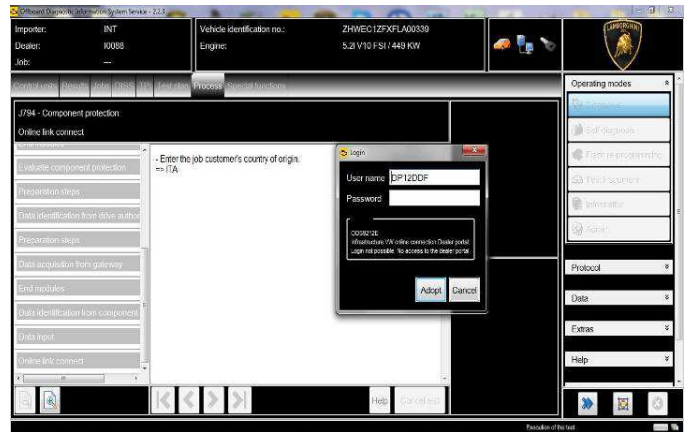
D. If the incorrect identification message is shown as in the picture below (error code: ODS1007E):

- be sure that your Geko account is valid;
- be sure that the label “Geko” is written on the token that you are using for the authentication;
- be sure the Password inserted is correct;
- click on Cancel and perform the application test (see document “ODIS_Checking_ConnectionServer_SVM_2.0” (*)).



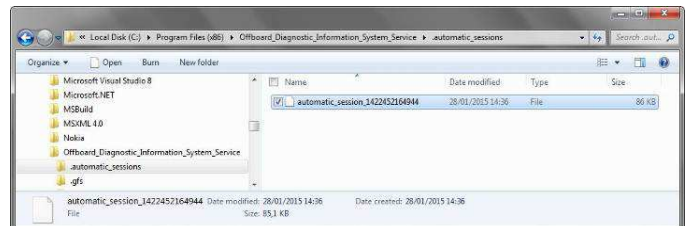
E. If the infrastructure error message is shown as in the picture below (error code: ODS9212E):

- be sure that your Geko account is valid
- be sure that the label “Geko” is written on the token that you are using for the authentication
- verify in ODIS settings you have “Internet” instead of “CPN” (see document “ODIS_Initial_Setup_2.0” (*))
- click on Cancel and perform the application test (see document “ODIS_Checking_ConnectionServer_SVM_2.0” (*))



If the same error was present during the application test, try following procedure:

- quit ODIS;
- Enter the folder C:\Program Files (x86)\Offboard_Diagnostic_Information_System_Service\automatic_sessions on your diagnosis laptop



Rev.01

The information and procedures published below are strictly confidential and intended exclusively for authorized operators and individuals. All copyrights are the property of Automobili Lamborghini S.p.A based on copyright law. The company reserves the right to make updates and modifications. The reprinting, reproduction, forwarding to unauthorized people and/or to third parties and partial or entire translation thereof are prohibited without written authorization from Automobili Lamborghini S.p.A.

doc. nr: L/V6_M06 Rev.[02]

15/16



- delete the only file present in that folder
- re-Start ODIS Service under following conditions:
 1. Network connection available;
 2. ODIS connection set on “Internet”;
- Retry the application test and the SVM with your GeKO Token.



In the remote case there was still an error, retry the procedure with a second GeKO token, if available.

F. In the case the flash container is not detected (see figure):



- Make sure to be recently synchronized with Mirrorserver by checking the last date of Sync under:
<http://mirrorserver/welcome>
 or under
http://IP_address/welcome
 if you don't have previously defined the “mirrorserver” IP address alias.
- Make sure to be correctly connected with Mirrorserver.

Congratulations

You have successfully installed your MirrorServer2 NOS-Box.

Testing the connection to the configured Provider Server. Please wait a moment, this takes some time ...

Configuration	
Base path	/var/www/desert
Provider URL	https://altair.mirrorserver2.net/development
Repository URL	https://altair.mirrorserver2.net/storage
Feedback URL	https://altair.mirrorserver2.net/health
Proxy	http://svc_blackbox?@10.48.187.43:8080
Key file	/var/www/desert/certs/userkey.pem
Certificate	/var/www/desert/certs/usercert.pem
Tests	
Provider WebDAV access	OK (/development/)
Repository WebDAV access	OK (/storage/)
Feedback WebDAV access	OK (/health/)
Successful package downloads	5
Failed package downloads	0
Last Sync	16-02-15 at 22-46-02

NOTE:

(*) ODIS technical documentation can be retrieved on the Lamborghini web portal, After Sales section, under ODIS subsection → ODIS technical documentation.



IMPORTANT REMARK:

The documents to be mandatory attached to the claim are:

- Job order done;
- Diagnosis Protocol saved.

Failure to follow the procedures may lead to the rejection of the request.

Your Area Manager is at full disposal for further information.

Best regards

Customer Service