


L624-A.09.15	To: Official After Sales Network Subject: Instrument Cluster (Kombi) software update Date: 02/20/2015 Pages 16	
--------------	---	---

Subject

Instrument Cluster (Kombi) software update

Model

All Lamborghini Huracán 2015 from VIN FLA00163 to FLA02216.

Warning: some vehicles included in this VIN range may not be involved, so check carefully on the Lamborghini WEB Portal (at the section named VIN Info) if the cars in your workshop or in your dealer stock are involved before performing any other operation.

Information to the field

As a result of continuous product monitoring, Automobili Lamborghini Spa has enhanced the quality of indications provided by the Instrument Cluster.

Field solution

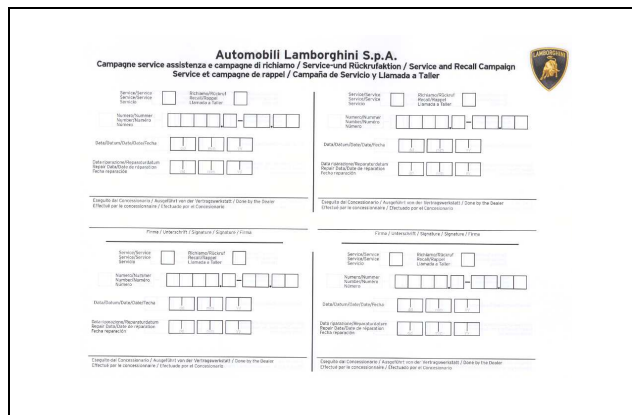
Update software that manage Kombi control unit

Warranty Claim data

The warranty reimbursement request for this rework action will be managed by the following standard Warranty Claim procedures.

Campaign Code: L624-A.09.15
Campaign Des.: Instrument Cluster software update
Cost code: 50
Component code: CCA0915
Trouble code: 220
Labor code: CCA0915100
Labor Time: 3h

Remember to fill all data in the section "Service and Recall Campaign" in the Warranty booklet of the vehicle as shown below.



Workshop instructions



The instructions contained in this bulletin are based on ODIS Service diagnosis software updated to release 2.2.3 and database Lamborghini 19.63 (see information bulletin BI.16.14)

Preliminary operations:

1. Make sure to be recently synchronized with Mirrorserver by checking the Last Sync date under:

<http://mirrorserver/welcome>

or under:

http://IP_address/welcome

if you didn't yet set up the mirrorserver IP alias



IMPORTANT

Make sure the last synchronization has been done after the 18th February 2015.

Rev.02	<p>The information and procedures published below are strictly confidential and intended exclusively for authorized operators and individuals. All copyrights are the property of Automobili Lamborghini S.p.A based on copyright law. The company reserves the right to make updates and modifications. The reprinting, reproduction, forwarding to unauthorized people and/or to third parties and partial or entire translation thereof are prohibited without written authorization from Automobili Lamborghini S.p.A.</p> <p>doc. nr: L/V6_M06 Rev.[02]</p>	1/16
--------	--	------



Congratulations

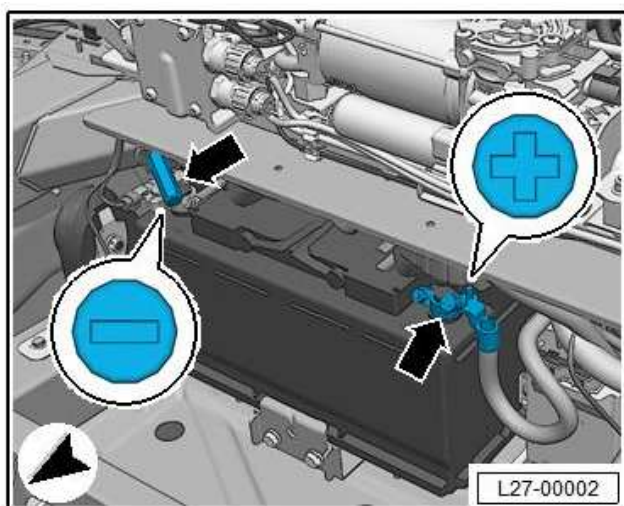
You have successfully installed your MirrorServer/2 NOS-Box.

Testing the connection to the configured Provider Server. Please wait a moment, this takes some time ...

Configuration	
Base path	/var/www/desert
Provider URL	https://altair.mirrorserver2.net/deployment
Repository URL	https://altair.mirrorserver2.net/storage
Feedback URL	https://altair.mirrorserver2.net/health
Proxy	http://svc_blackbox:? @10.48.187.43:8080
Key file	/var/www/desert/certs/userkey.pem
Certificate	/var/www/desert/certs/usercert.pem
Tests	
Provider WebDAV access	OK (/deployment/)
Repository WebDAV access	OK (/storage/)
Feedback WebDAV access	OK (/health/)
Successful package downloads	5
Failed package downloads	0
Last Sync	18-02-15 at 22:39:14

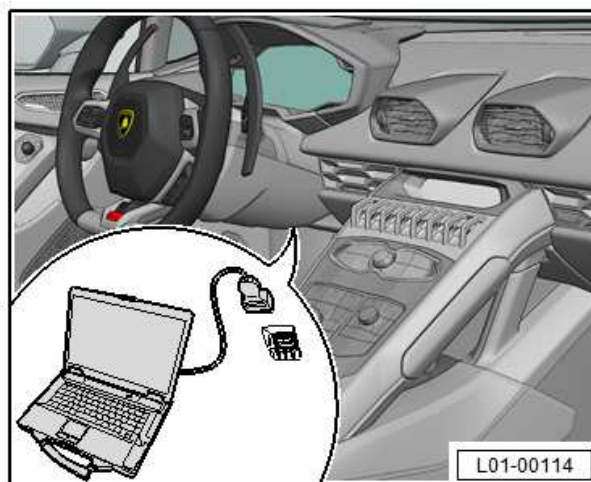
Update procedure:

- Please connect a battery charger to the recharge points available in the front luggage compartment, as shown in picture.



- Please connect the VAS5054 interface to the vehicle's OBD plug and to the diagnostic laptop.

Turn the ignition ON



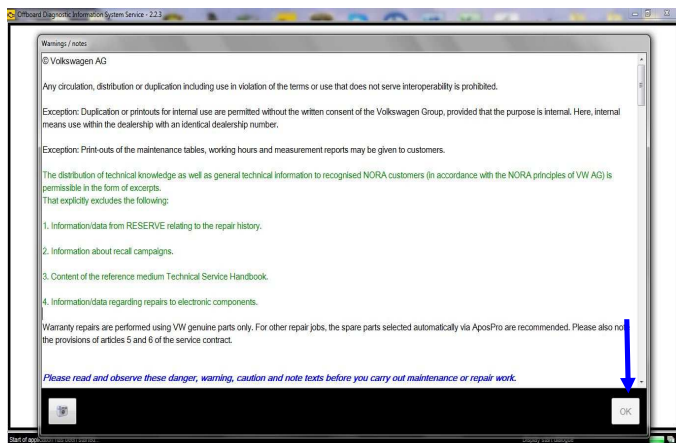
- Start the ODIS Service double clicking on the related icon on the desktop of the diagnosis laptop.



- Scroll down the right side vertical bar. Click on "OK" to hide the general information window.

L624-
A.09.15

To: Official After Sales Network
Subject: Instrument Cluster (Kombi) software update
Date: 02/20/2015
Pages 16

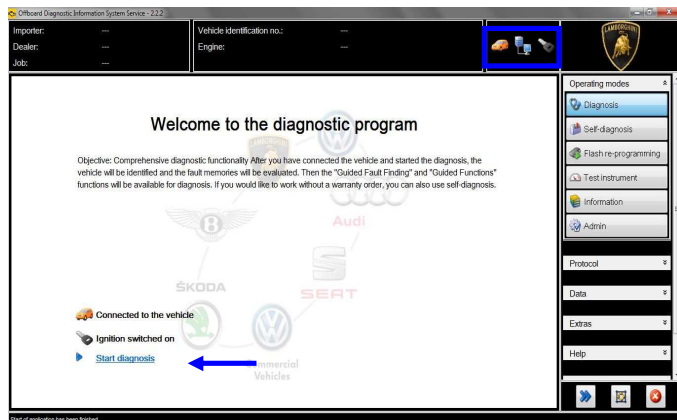


6. Select “Start diagnosis”.



Make sure that ODIS can detect the vehicle connection status and the key ON.

Click “cancel” to each eventual Login to group systems.

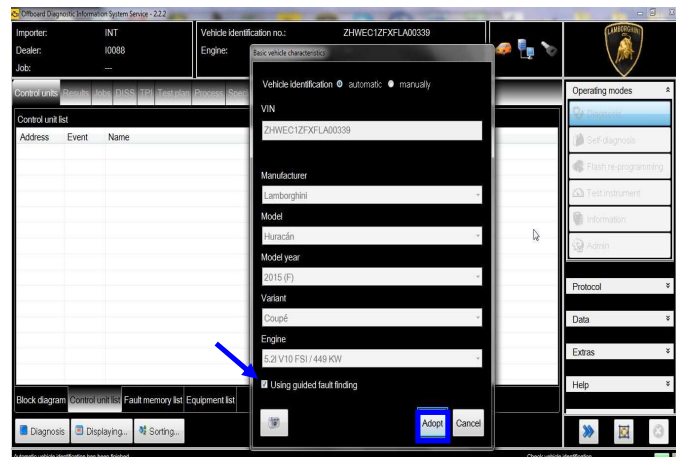


7. Check the vehicle identification on the window “Basic vehicle characteristics”.

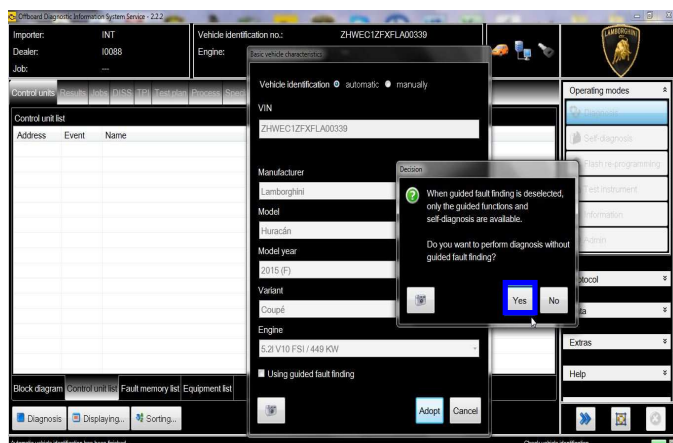
Select the Variant in the related menu

Deselect the checkbox “Using guided fault finding”

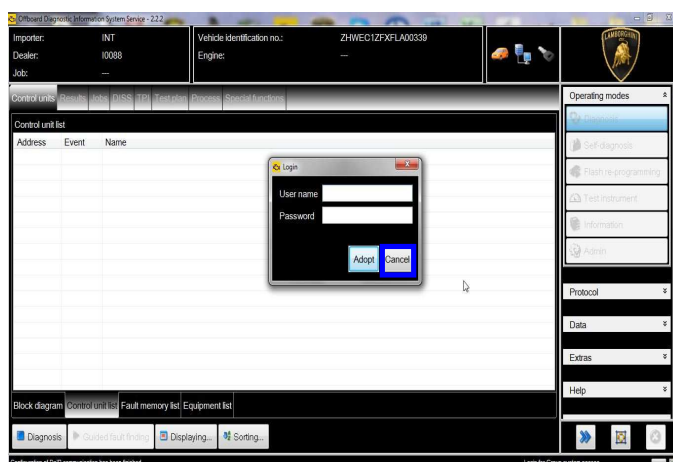
Click “Adopt”




8. Click “Yes”

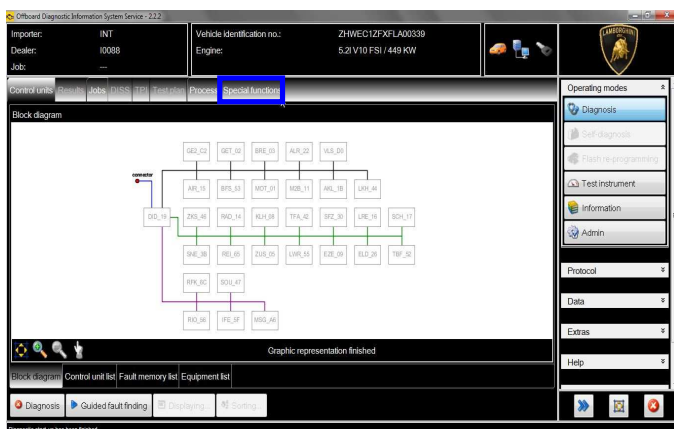


9. Skip the Login window by clicking “Cancel”



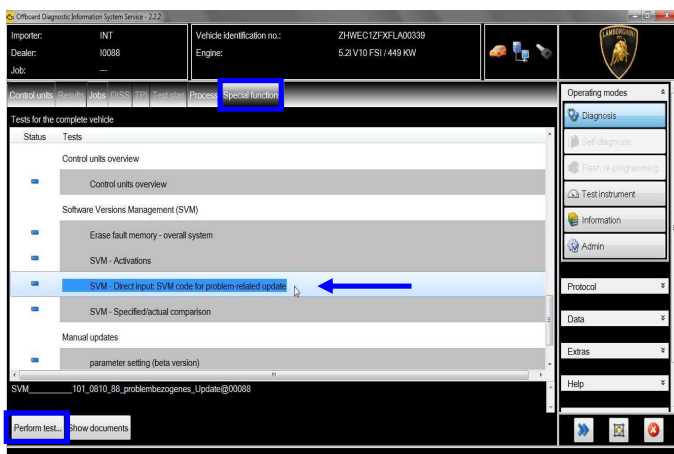
L624- A.09.15	To: Official After Sales Network Subject: Instrument Cluster (Kombi) software update Date: 02/20/2015 Pages 16	
--------------------------	---	---

10. At the end of start-up procedure (see status in the progress bar bottom right), move on the ODIS tab “Special functions” now available.

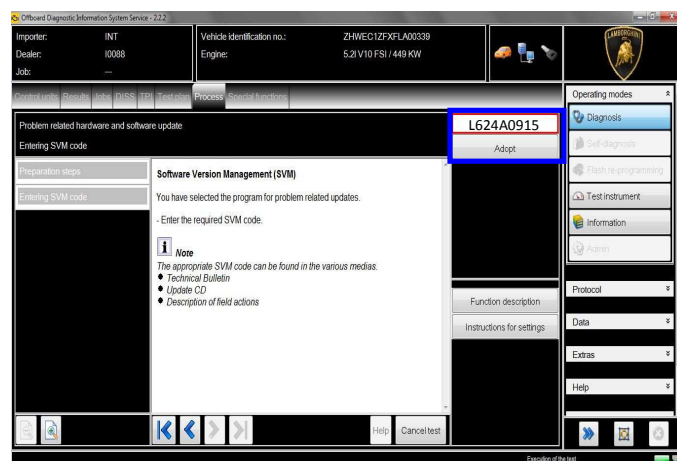


11. Select “SVM – Direct input: SVM code for problem related update” by clicking the related row with the mouse.

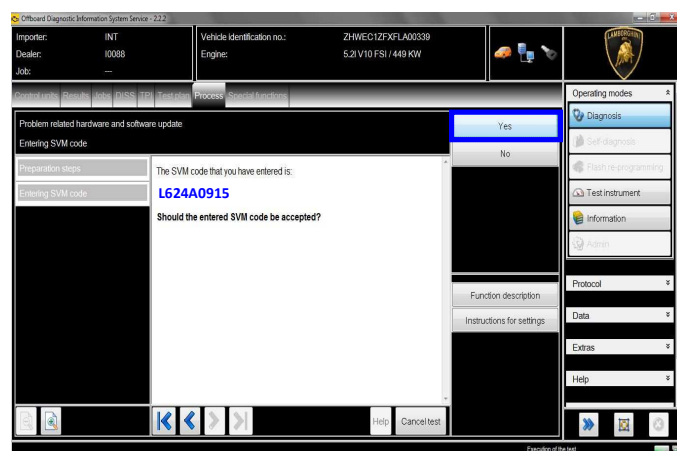
Click “Perform test...” to execute the SVM function



12. Insert in the upper box with the cursor the code **L624A0915**
Click “Adopt”



13. Confirm that the inserted code is correct clicking on “Yes”.



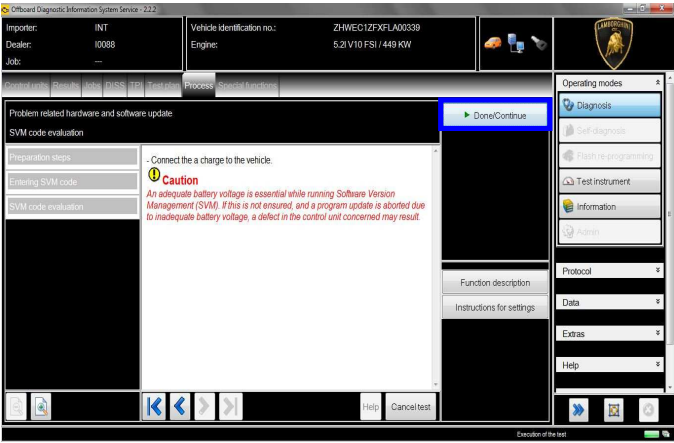
14. Click on “Done/Continue” to start the data acquisition from all the vehicle’s ECUs.



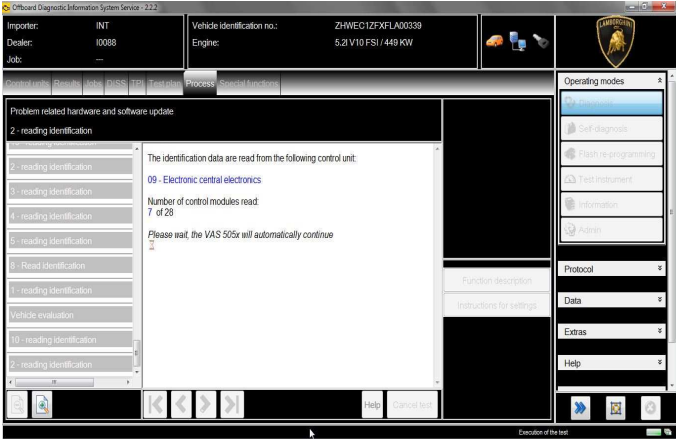
IMPORTANT

Connect always a battery charger during the SVM function

Rev.02	<p>The information and procedures published below are strictly confidential and intended exclusively for authorized operators and individuals. All copyrights are the property of Automobili Lamborghini S.p.A based on copyright law. The company reserves the right to make updates and modifications. The reprinting, reproduction, forwarding to unauthorized people and/or to third parties and partial or entire translation thereof are prohibited without written authorization from Automobili Lamborghini S.p.A.</p> <p style="text-align: right;">doc. nr: L/V6_M06 Rev.[02]</p>	4/16
--------	---	------



15. Wait until the data acquisition from all control modules is completed.



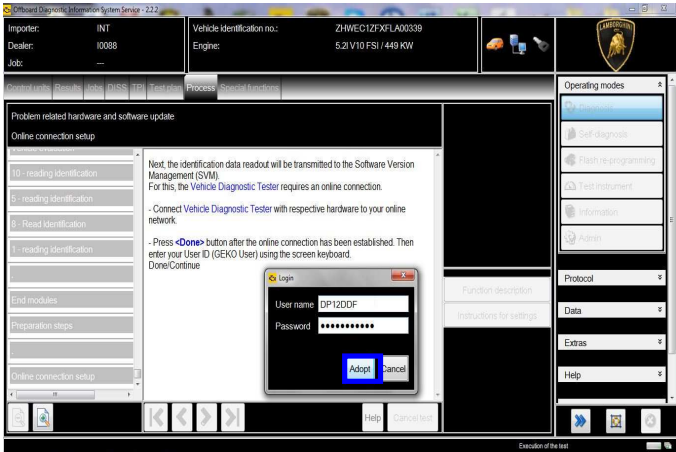
16. For the online authentication a valid GeKo account is necessary.

Be sure that your internet connection is working properly.

Click on “Done/Continue” to access the Login window.

Insert your GeKo user name in the field “Login” and the pin 1324 + current 6 digit code displayed on your GeKo token in the field Password.

Then confirm clicking on “Adopt”.

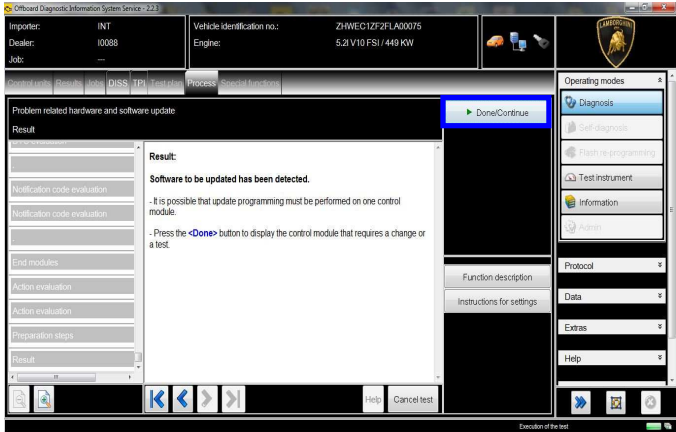


17. The communication is then established with the central server.

At the end of communication you receive following feedback:

“-software to be update has been detected (on 1 control unit).”

Click “Done/Continue”.

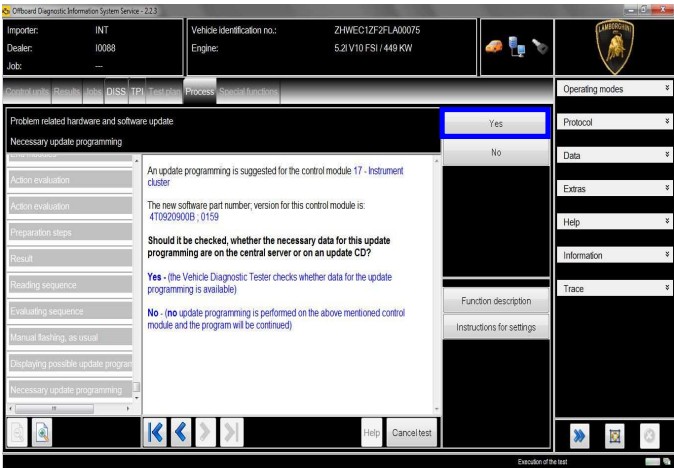


18. Instrument Cluster (Kombi) Software Update

The example in the figure below refer to software part number and version of the Instrument Cluster control unit Software.

4T0920900B; 0159

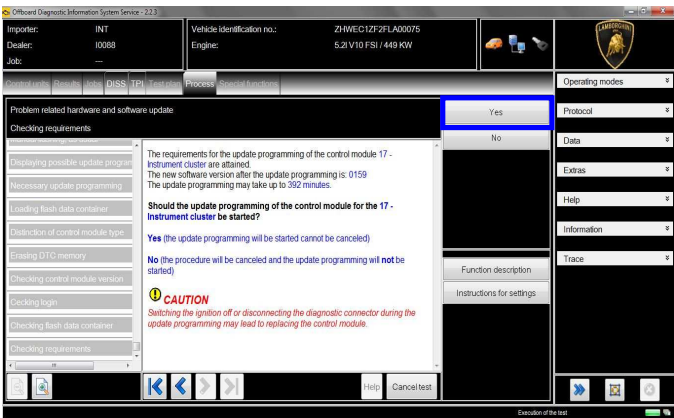
Click “Yes” to check the availability of the updated software on Your Mirrorserver.



20. Wait until the update programming of the Instrument Cluster is completed.



19. Verify the new software data on the Instrument Cluster ecu and click “Yes” to update.



IMPORTANT

Do not disconnect hardware interface from OBD plug and do not switch ignition OFF during the software update!

During this software update, be sure that ODIS is the only application running on the diagnosis laptop.



NOTE

- During the software update, the Instrument Cluster will display following image:



Please note that Instrument Cluster software update is a quite delicate and long operation: be sure that ODIS service is the only application running on the diagnosis laptop.

21. Wait the end of the update, indicated by the progress of the yellow bar at the bottom of the display (see first image), till its definitive disappearance. The instrument cluster shall switch on as indicated in the second image.



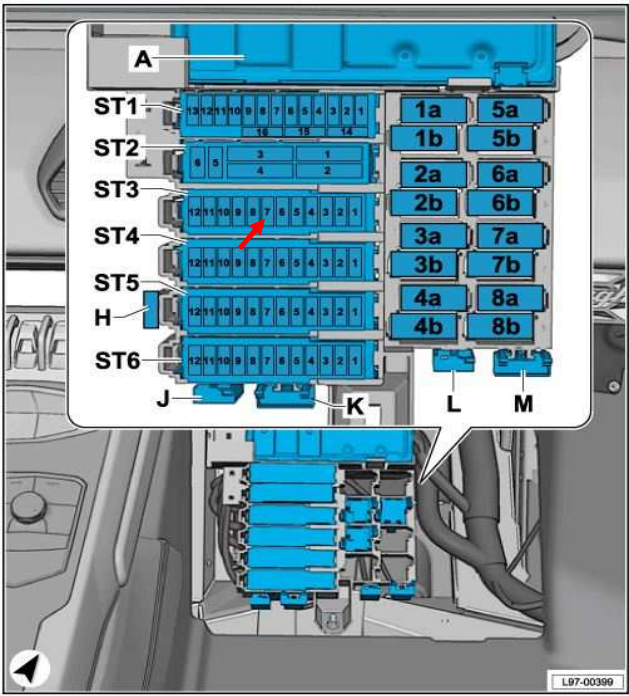
IMPORTANT

If the update programming has not been completed or has been for some reasons unsuccessful:

- Close the ODIS session;
- Turn the ignition OFF;
- Disconnect the locked Instrument Cluster, by removing the SC7 fuse on black fuse holder ST3 (see below images)

7	- Fuse 7 on fuse holder C -SC7-	5 A
Control unit in dash panel insert -J285-		30a

Position of the fuse on Left Handdrive cars

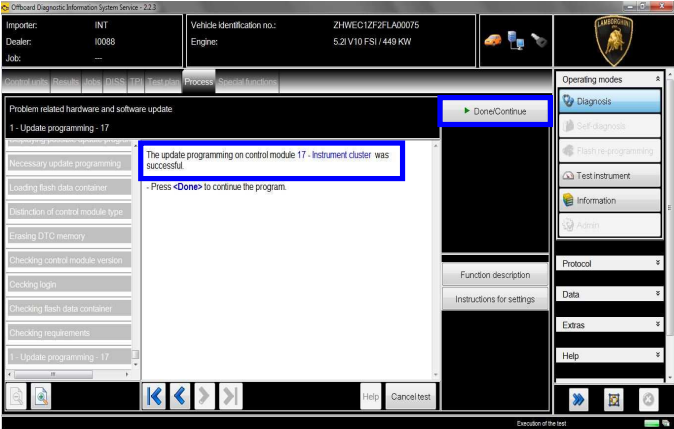



NOTE

In this quite delicate operation, requiring some minutes, do not disconnect the diagnosis laptop and keep it in charge!

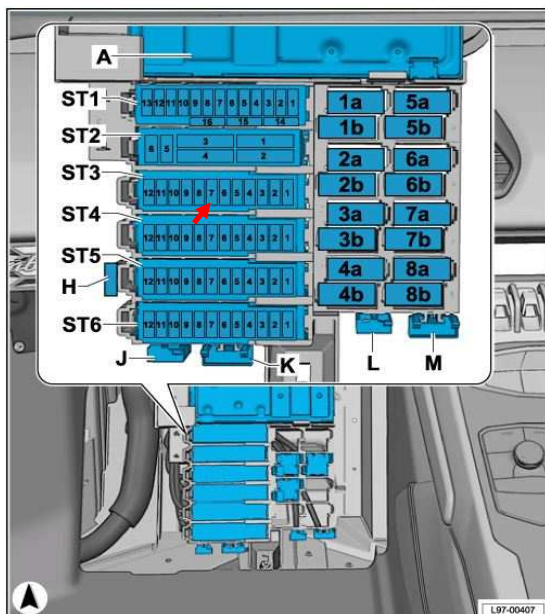
22. Once the update programming has been completed successfully a feedback as in the picture below is displayed.

Click “Done/Continue”, only at the end of the operations performed in previous step 21



<p>L624- A.09.15</p>	<p>To: Official After Sales Network Subject: Instrument Cluster (Kombi) software update Date: 02/20/2015 Pages: 16</p>	
--------------------------	---	---

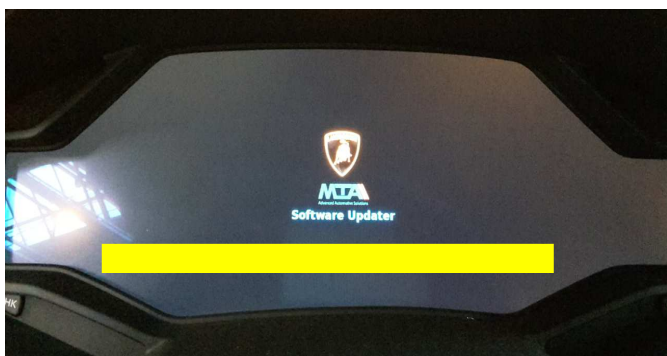
Position of the fuse on Right Handdrive cars



- Wait at least 10 minutes and reconnect the Instrument Cluster, by inserting the SC7 fuse before removed.
- Turn the ignition ON;
- Restart ODIS and repeat the procedure from step 11, checking that ODIS is the only application running on the diagnosis laptop.

23. Before go on with next steps, following the indications given by the diagnosis tester, make sure that:

- The Instrument Cluster update procedure has been really terminated (**disappear of yellow bar** at the bottom of the display)

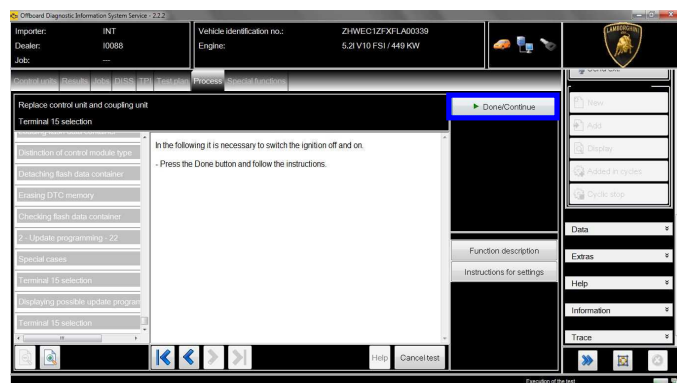


- The Instrument Cluster is correctly switched on as indicated by the below figure:



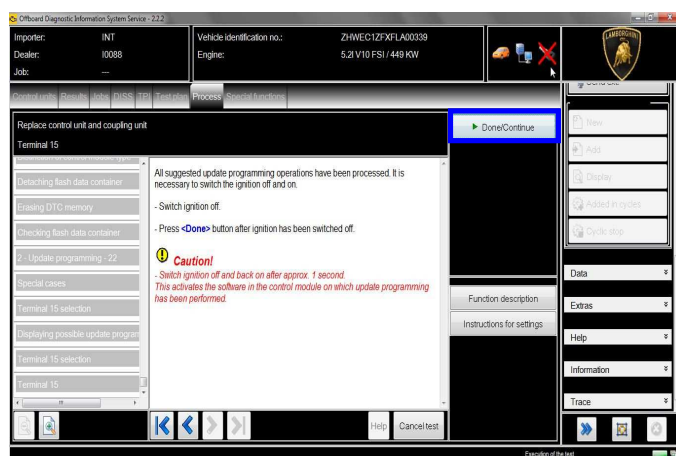
24. In the following an ignition OFF – ON cycle is necessary to restart the ECU.

Press “Done/Continue” to continue.



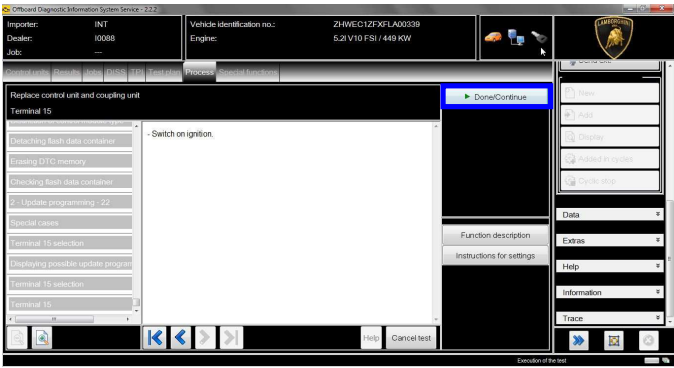
25. Switch the ignition OFF.

Press “Done/Continue”.

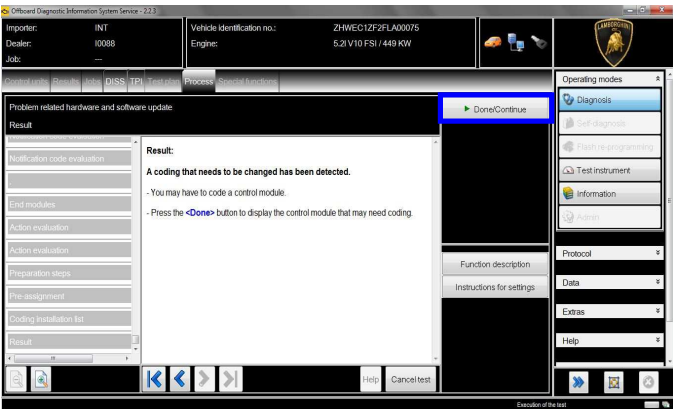


<p>Rev.02</p>	<p>The information and procedures published below are strictly confidential and intended exclusively for authorized operators and individuals. All copyrights are the property of Automobili Lamborghini S.p.A based on copyright law. The company reserves the right to make updates and modifications. The reprinting, reproduction, forwarding to unauthorized people and/or to third parties and partial or entire translation thereof are prohibited without written authorization from Automobili Lamborghini S.p.A.</p> <p style="text-align: right;">doc. nr: L/V6_M06 Rev.[02]</p>	<p>8/16</p>
---------------	---	-------------

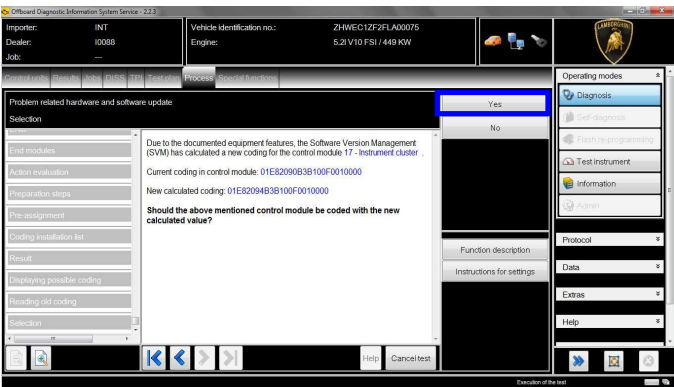
26. Switch the ignition ON.
Press “Done/Continue”.



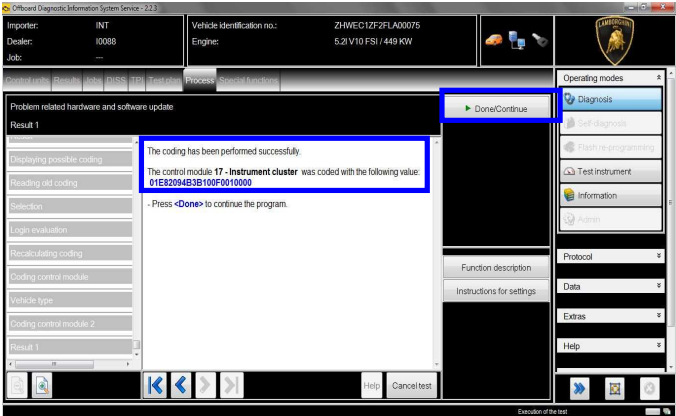
27. New coding has been detected.
Click “Done/Continue”.



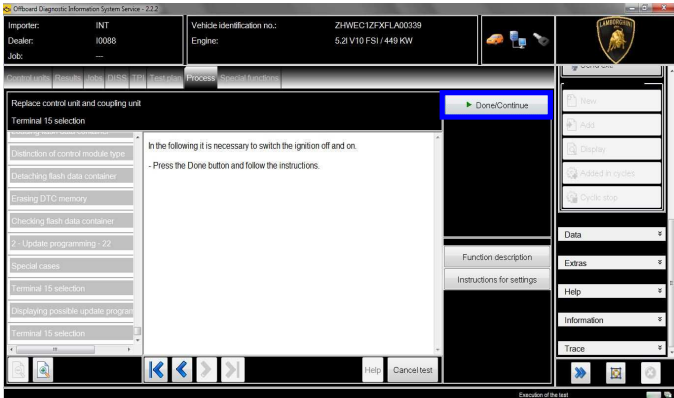
28. New coding has been calculated on the 17 – Instrument Cluster and must be written in the control unit.
Click “Yes”.



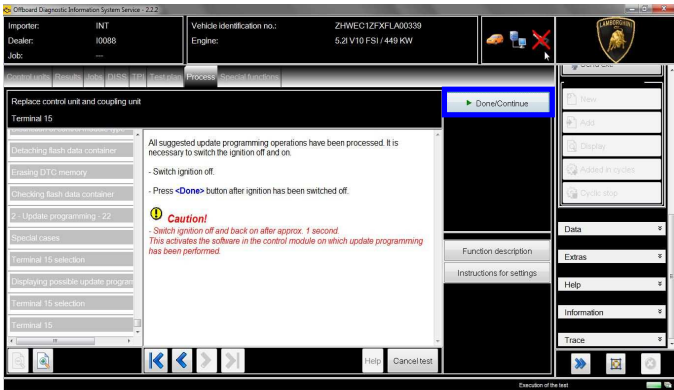
29. At the end of the coding update a feedback is displayed as in the below figure.
Click “Done/Continue”.



30. In the following an ignition OFF – ON cycle is necessary to restart the ECU.
Press “Done/Continue” to continue.



31. Switch the ignition OFF.
Press “Done/Continue”.



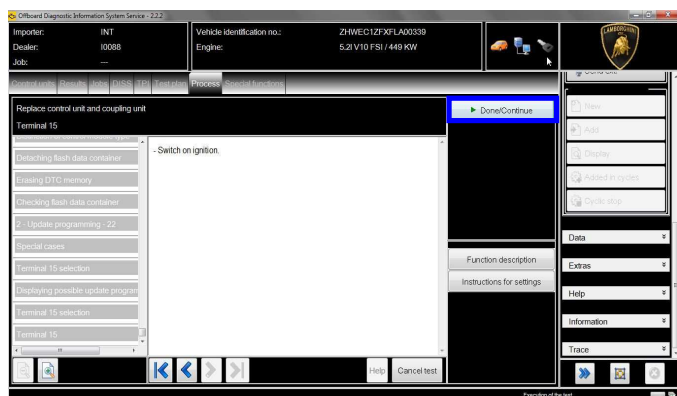
L624-
A.09.15

To: Official After Sales Network
Subject: Instrument Cluster (Kombi) software update
Date: 02/20/2015
Pages 16



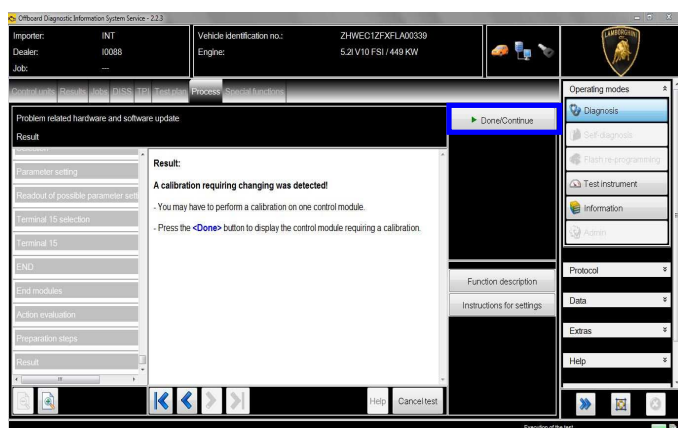
32. Switch the ignition ON.

Press “Done/Continue”.



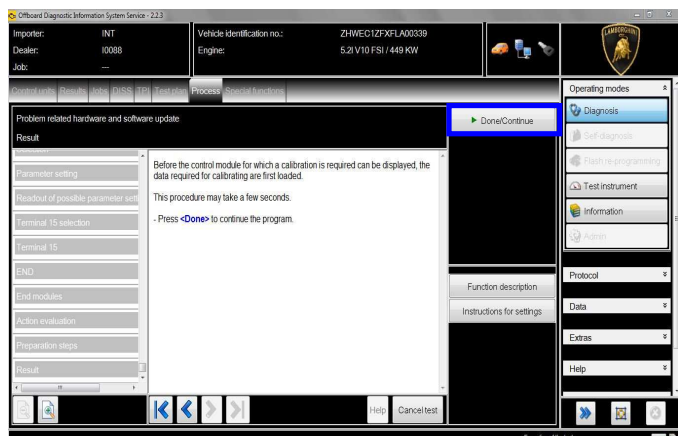
33. New calibration has been detected.

Click “Done/Continue”



34. Wait few seconds in order to allow the download of all calibrations data.

Click “Done/Continue”.



35. Continue with the calibration of the control unit 17 – Instrument Cluster

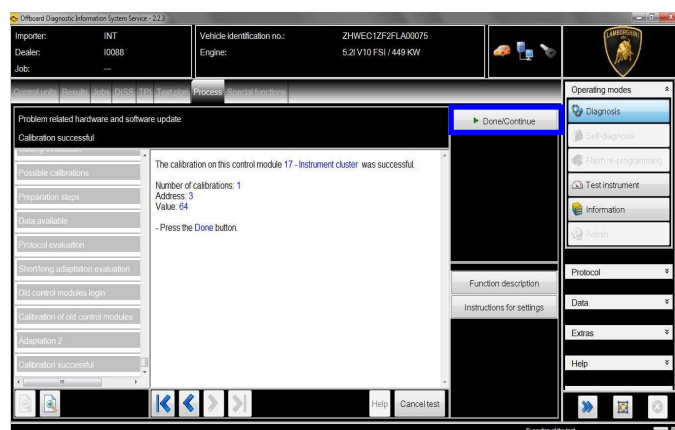
Click “Done/Continue” to continue with the calibration of each parameter.

There are **46** parameters to be calibrated.

If the calibration update has not been completed or has been unsuccessful:

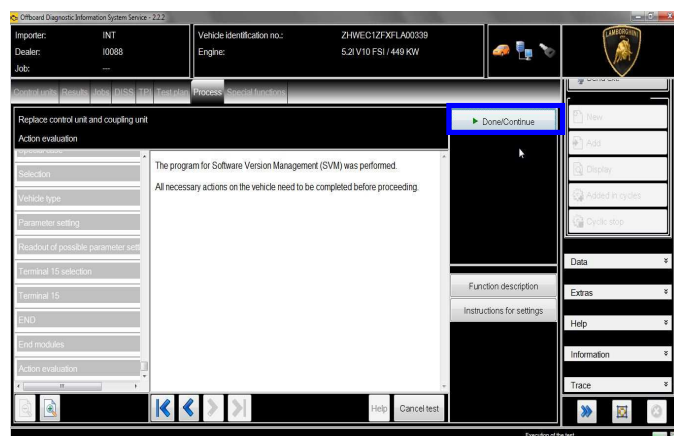
- turn the ignition OFF
- wait 1 minute before turning the ignition ON again

If offered by the program: select “Repeat” to retry the update programming, otherwise repeat the procedure from step 33



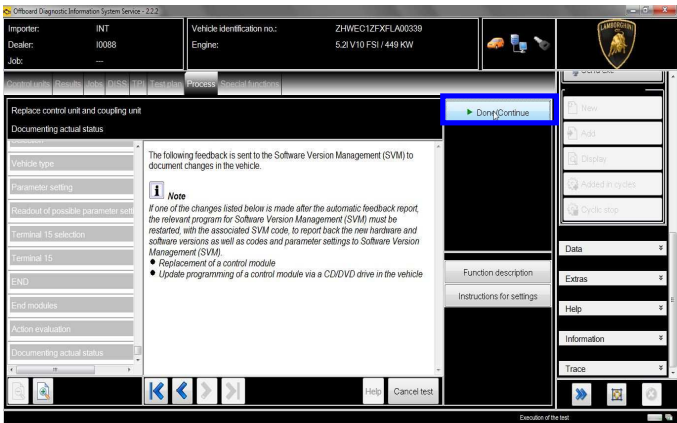
36. Complete the SVM function

Press “Done/Continue”.

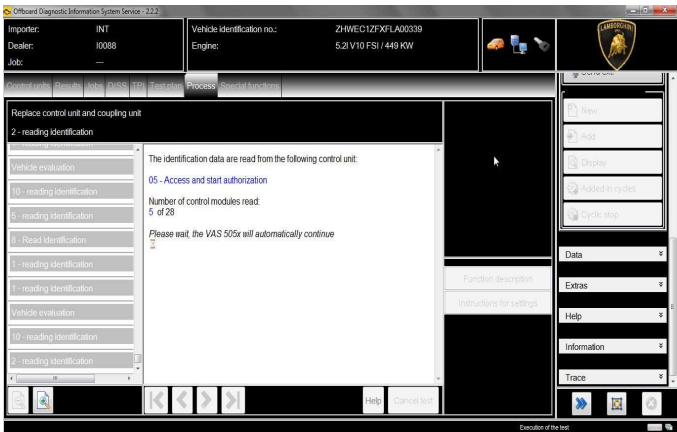


37. SVM can be completed after data acquisition from all ECUs.

Click “Done/Continue”.



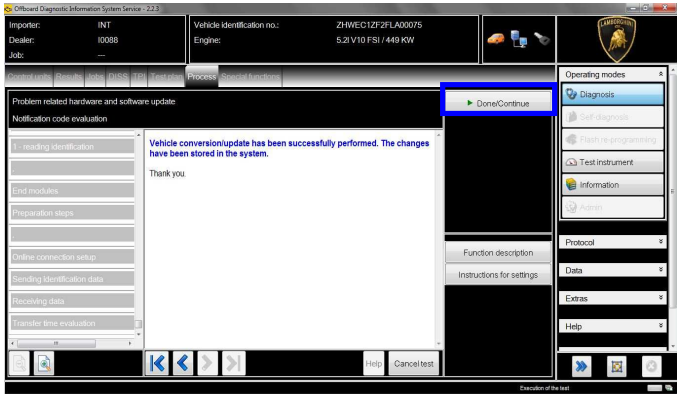
38. Wait until the data acquisition from all the control modules is completed.



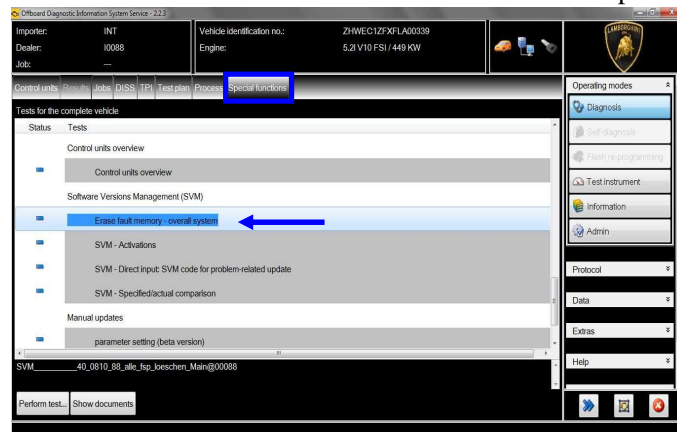
39. Once the data report has been sent to the servers a feedback as in the picture below is displayed.

The software update of the Kombi Ecu has been completed successfully and all the information have been stored in the system.

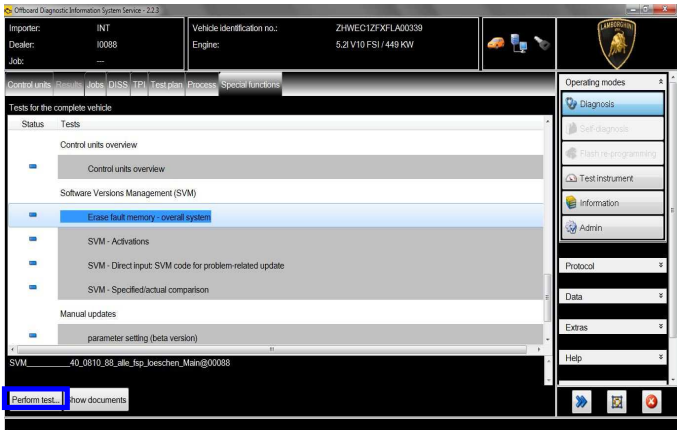
Press “Done/Continue” to exit the program.



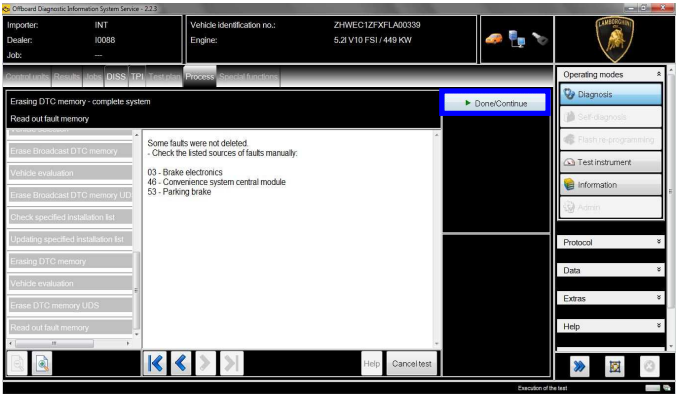
40. Once finished the update and quitted the software update (SVM) function, go back to the tab “Special functions” to select “Erase fault memory – overall system”: it is necessary to clear all the faults stored because of the recent software update.



41. Execute the program “Erase fault memory – overall system” clicking on “Perform test...”



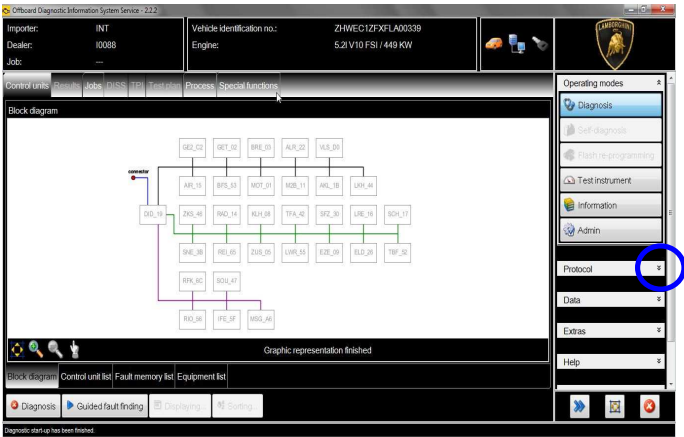
42. Eventual static errors caused by failures not related to the recent software update won't be deleted
- Click "Done/Continue" to end the program.



43. Check the time and date indication on the left on the Instrument Cluster, and regulate by means of the Central Console pushbuttons, in the case the clock wasn't updated.

Diagnosis Protocol Saving procedure:

1. At the end of previous steps, expand the menu "Protocol" on the right side (menu bar).

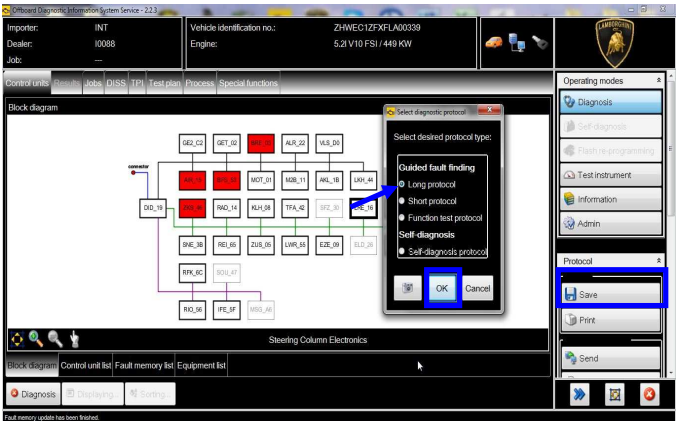


2. Click "Save" in the subgroup of buttons "General".

In the diagnosis protocol window under GFF select:

- Long protocol.

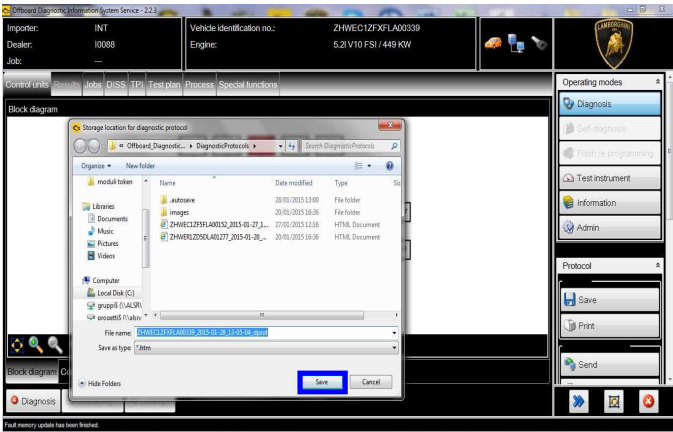
By clicking on it. Then click "OK".



3. Select the position where you want to save the diagnosis protocol on your diagnosis laptop.
(default path can be changed under Admin and is set under ODIS Service installation folder).
Diagnosis protocol format is internet (.htm).
Click **“Save”** to save the protocol.



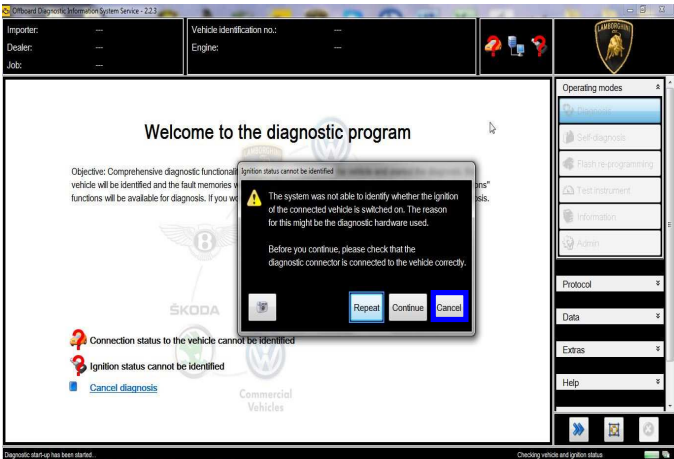
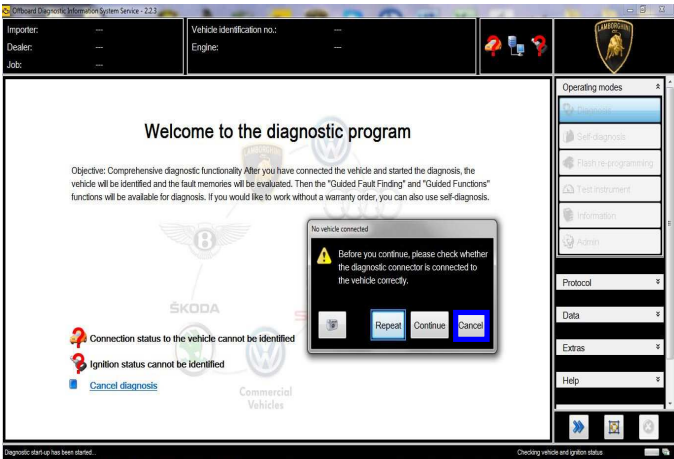
Click **“Print”** in the subgroup of buttons **“General”** to print the protocol directly on a pdf file (if available Adobe pdf) or in paper format by sending to an installed network printer



4. The diagnosis protocol has to be attached to the related Warranty Claim
(in order to insert the claim on the Web Portal, please refer to Warranty Claim Manual you can find under the Portal, Warranty section).

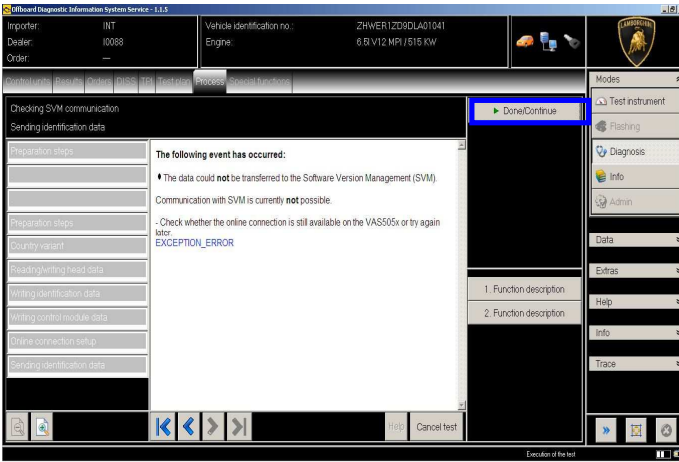
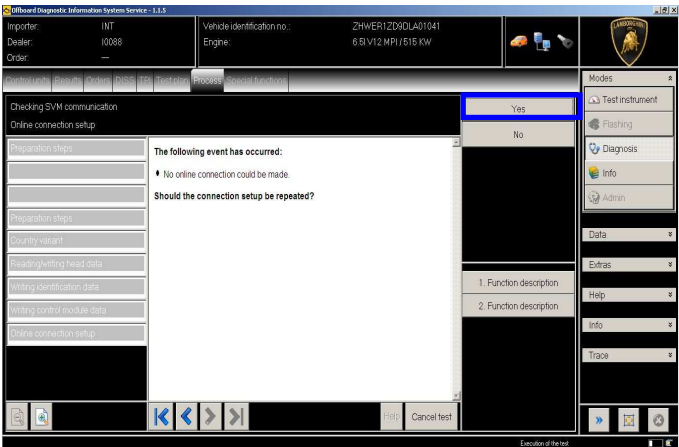
Trouble shooting:

- A. If the error message regarding the VAS5054 interface and the 2 icons for status of on board connection and key on are shown as in the picture below:
- Click **“Cancel”**;
 - Repeat the VAS5054 HW interface installation following the procedure (*) **“VCI Manager v2.0”**, by entering in the menu **“Extras”** on the right side and clicking on **“Diagnostic interface”**.



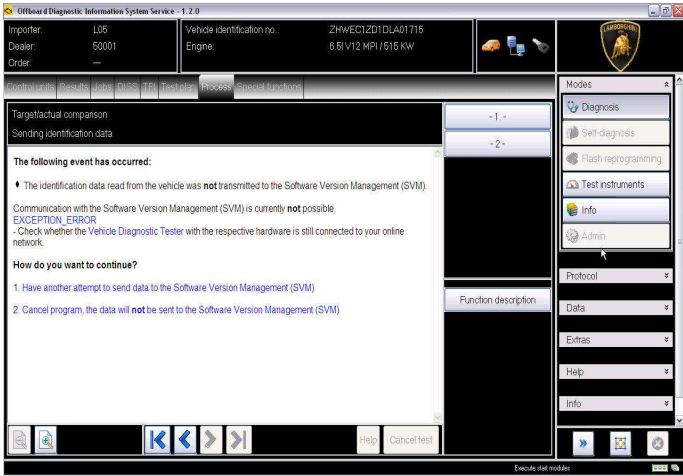
B. If one of the connection errors screens is shown as in the pictures below:

- it is not possible to establish a connection with the central server. Please check carefully that the diagnosis laptop is properly connected to the internet network and retry clicking “Yes” or “Done/Continue”.



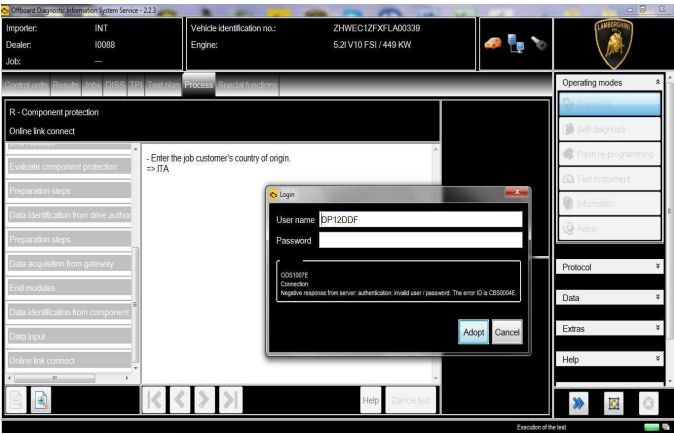
C. If the loss of connection happens during the target/actual comparison.

- It is not possible to connect to central server, check the working connection of internet and retry by clicking “1”.

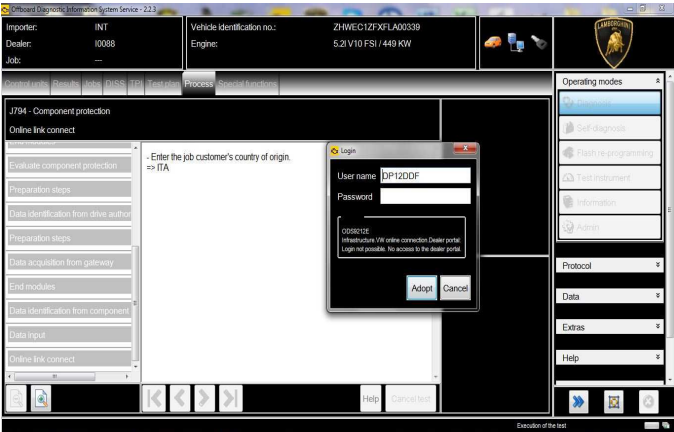


D. If the incorrect identification message is shown as in the picture below (error code: ODS1007E):

- be sure that your Geko account is valid;
- be sure that the label “Geko” is written on the token that you are using for the authentication;
- be sure the Password inserted is correct;
- click on Cancel and perform the application test (see document “ODIS_Checking_ConnectionServer_SV M_2.0” (*)).

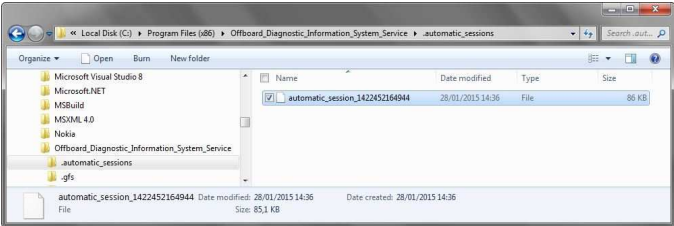


- E. If the infrastructure error message is shown as in the picture below (error code: ODS9212E):
- be sure that your Geko account is valid
 - be sure that the label “Geko” is written on the token that you are using for the authentication
 - verify in ODIS settings you have “Internet” instead of “CPN” (see document “ODIS_Initial_Setup_2.0” (*))
 - click on Cancel and perform the application test (see document “ODIS_Checking_ConnectionServer_SVM_2.0” (*))



If the same error was present during the application test, try following procedure:

- quit ODIS;
- Enter the folder C:\Program Files (x86)\Offboard_Diagnostic_Information_System_Service\automatic_sessions on your diagnosis laptop

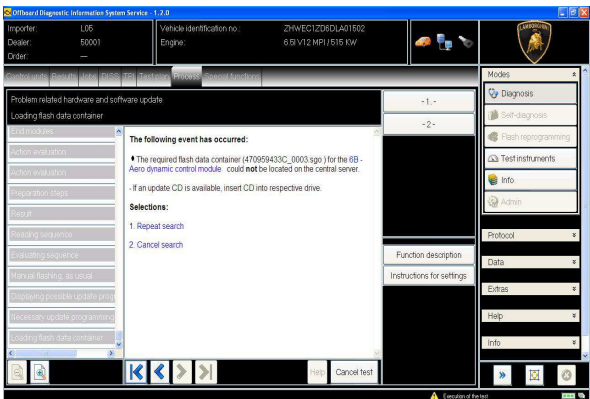


- delete the only file present in that folder
- re-Start ODIS Service under following conditions:
 1. Network connection available;
 2. ODIS connection set on “Internet”;
- Retry the application test and the SVM with your GeKO Token.



In the remote case there was still an error, retry the procedure with a second GeKO token, if available.

- F. In the case the flash container is not detected (see figure):



- Make sure to be recently synchronized with Mirrorserver by checking the last date of Sync under:
<http://mirrorserver/welcome>
or under
http://IP_address/welcome
if you don't have previously defined the “mirrorserver” IP address alias.
- Make sure to be correctly connected with Mirrorserver.

L624-
A.09.15

To: Official After Sales Network
Subject: Instrument Cluster (Kombi) software update
Date: 02/20/2015
Pages 16



Congratulations

You have successfully installed your MirrorServer/2 NOS-Box.

Testing the connection to the configured Provider Server. Please wait a moment, this takes some time ...

Configuration	
Base path	/var/www/desert
Provider URL	https://altair.mirrorserver2.net/deployment
Repository URL	https://altair.mirrorserver2.net/storage
Feedback URL	https://altair.mirrorserver2.net/health
Proxy	http://svc_blackbox? @10.48.187.43:8080
Key file	/var/www/desert/certs/userkey.pem
Certificate	/var/www/desert/certs/usercert.pem
Tests	
Provider WebDAV access	OK (/deployment/)
Repository WebDAV access	OK (/storage/)
Feedback WebDAV access	OK (/health/)
Successful package downloads	5
Failed package downloads	0
Last Sync	18-02-15 at 22-39-14

NOTE:

(*) ODIS technical documentation can be retrieved on the Lamborghini web portal, After Sales section, under ODIS subsection → ODIS technical documentation.



IMPORTANT REMARK:

The documents to be mandatory attached to the claim are:

- Job order done;
- Diagnosis Protocol saved.

Failure to follow the procedures may lead to the rejection of the request.

Your Area Manager is at full disposal for further information.

Best regards

Customer Service

Rev.02

The information and procedures published below are strictly confidential and intended exclusively for authorized operators and individuals. All copyrights are the property of Automobili Lamborghini S.p.A based on copyright law. The company reserves the right to make updates and modifications. The reprinting, reproduction, forwarding to unauthorized people and/or to third parties and partial or entire translation thereof are prohibited without written authorization from Automobili Lamborghini S.p.A.

doc. nr: L/V6_M06 Rev.[02]

16/16