

Procedure: L140-08.04

Operation: ECUs Re-flash (only for L140 with manual gearbox).

A Preliminary warnings

- 1.1** Before starting with the procedure be sure that you are equipped with necessary tools as at point B and you have correctly configured your lap top following the instructions reported in CT.06.04.

B Tools:

- 1.2** Can interface type “C”(fig. 1 p/n 69190056) recognizable from the old version from the sticker printed with the blue letter C (pic.1 ref. A).

Pic.1



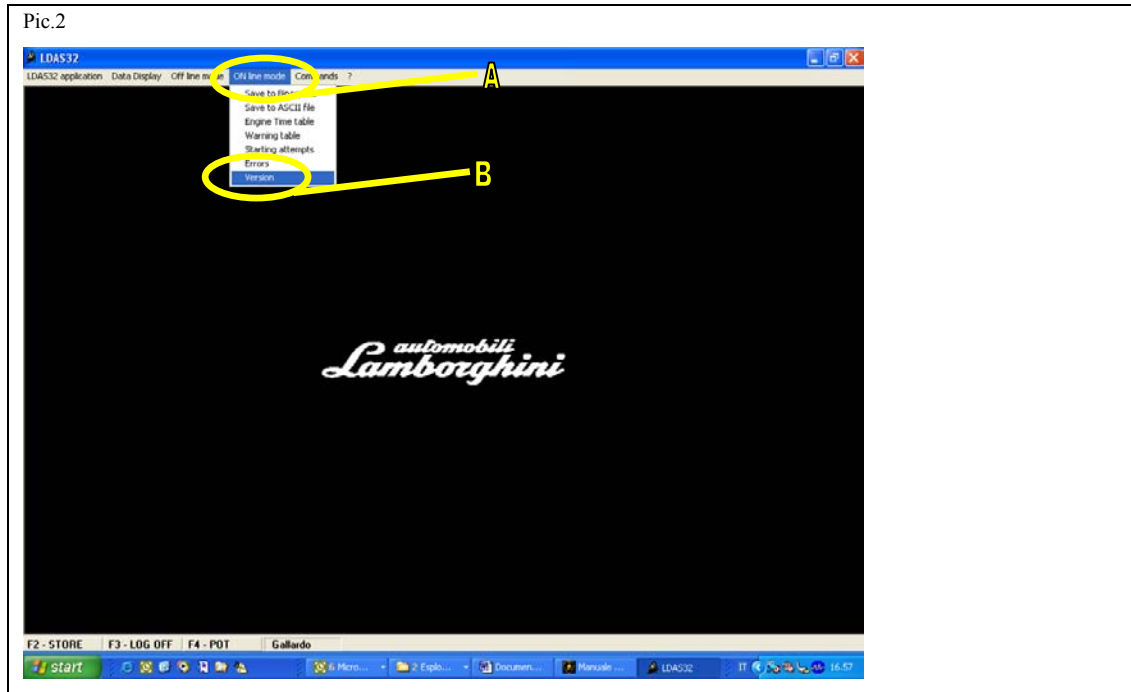
- 1.3** Lamborghini Diagnostic Tester configured as reported in CT.06.04.

C Reflash LIE e GFA ECU.

- 1.4** Connect your p.c. by the can interface (pic.1 p/n 69190056) to the vehicle.
1.5 Open LDAS.
1.6 Key “on” battery e charged between 8-14 Volt.
1.7 From the tool bar select “ON line” (pic..2 ref. A).
1.8 Click on the command “Version” (pic.2 ref. B).



Pic.2



1.9 Note “Firmware” and “Map” code of LIE(bank 1 e bank 2) and GFA ECU (bank1 and 2). (pic.3).

Pic.3

Version <->		
LIE bank 1	FirmWare :	Lambo LIE2003 05Dec2003 V4018110
	Map :	U18152MD 11-12-2003 16.00
	Kernel :	LIE2003 KERNEL 24Oct02 V1.02
	FPGA :	2.30
	Work time :	14h 28' 15"
	Number :	2447
	Production year/week :	03/48
LIE bank 2	FirmWare :	Lambo LIE2003 05Dec2003 V4018110
	Map :	U18152MD 11-12-2003 16.00
	Kernel :	LIE2003 KERNEL 24Oct02 V1.02
	FPGA :	2.30
	Work time :	14h 29' 14"
	Number :	2561
	Production year/week :	03/48
GFA	FirmWare :	Lambo GFA2002 12Nov2003 G2021803
	Map :	G2218MU2 11-21-2003 09.43
	Kernel :	Lambo GFA2002 08Jan2003 K.02.02
	FPGA :	2.10
	Work time :	14h 26' 22"
	Number :	0
	Production year/week :	00/00

1.10 Use template nr 1 and 2 e to find the program step of the ECU (step 1 or 3) fit on the vehicle using the “Firmware” and the “Map” code.



Temp. 1-codes of the ECU to be re-flashed

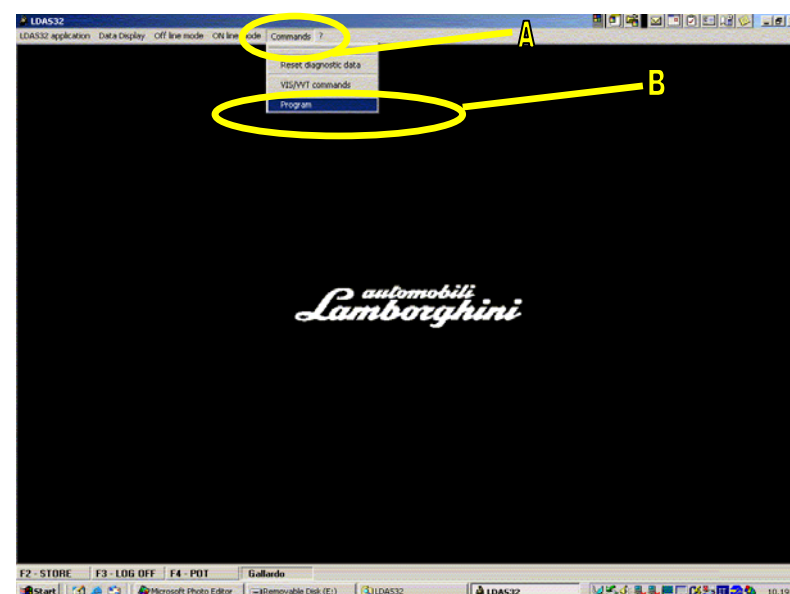
manual trasm.		Step 1	Step 3
Lie	Firmware	V4015608	V4022804
	Map	E15652M7	E228A2M2
	P/n	400 907 557 D	400 907 557 H
Gfa	Firmware	G2021001	G2022200
	Map	G2210ME4	G2222ME3
	P/n	400 959 433 D	400 959 433 T

Temp. 2-codes of the ECU already re-flashed

manual transm.		Step 1	Step 3
Lie	Firmware	V4022906	V4022804
	Map	E22952M9	E228A2M4
	P/n	400 907 557 AA	400 907 557 AB
Gfa	Firmware	G2022205	
	Mappa	G222ME5	
	P/n	400 959 433 AE	

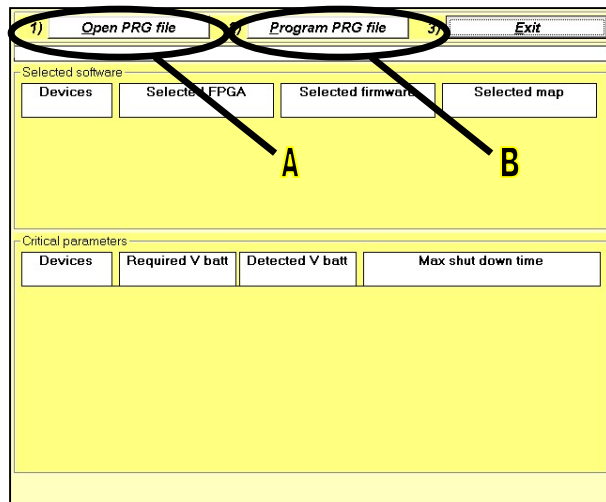
- 1.11 From the pull down menu “*Commands*” (Pic.n.4 A) select “*Program*” (Pic.n.4 B).

Pic. 4



- 1.12 On the screen it is displayed the ECU program window (pic..8)
1.13 Select “*Open PRG file* (pic.5 ref. A).

Pic..5



1.14 Click “service pack 00-02”(pic.n.6 A).

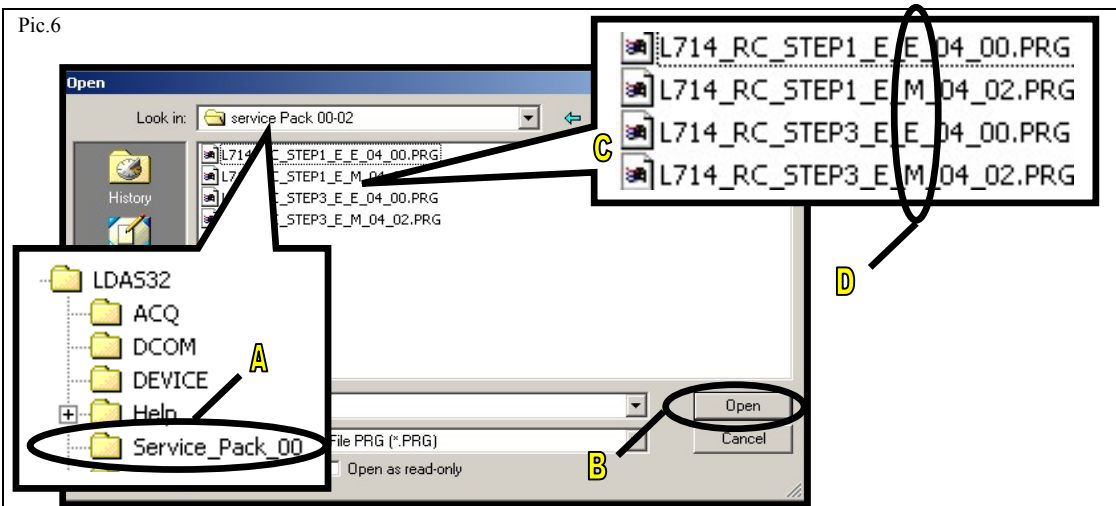
1.15 Select the file:

- L714_RC_Step1_E_M_04_02.PRG for vehicles which fit ECU with programming **step 1** (pic.6 C) **.
- L714_RC_Step3_E_M_04_02.PRG for vehicles which fit ECU with programming **step 3** (pic.6 C).**

****Warning:** Files are named (pic.n.6 C):

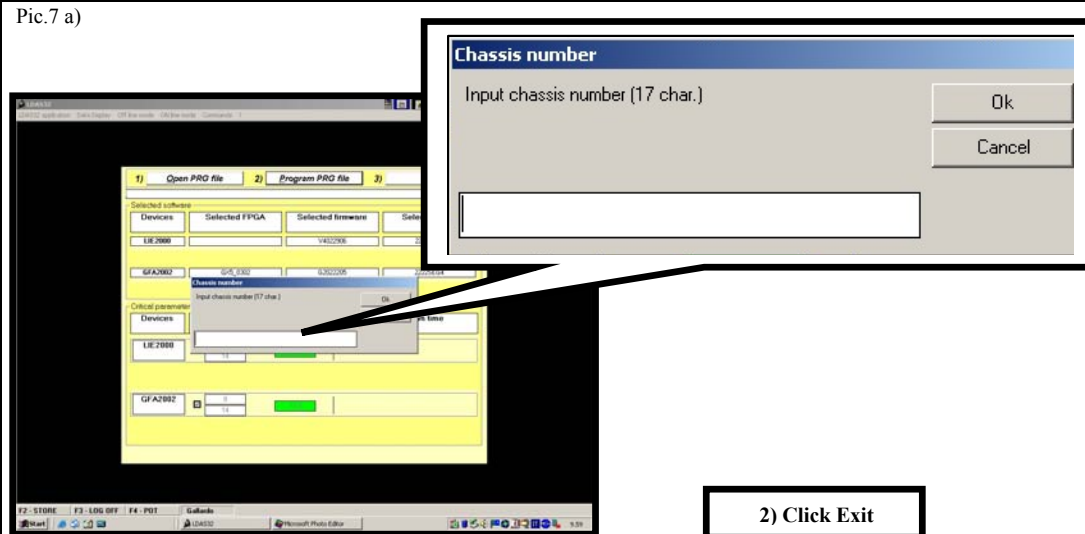
- L714_RC_ = model: Gallardo.
- Step X = ECU program step.
- E = Europe: market version.
- **M** = **manual gearbox** (ref. D pic.5).
- E = E-gear. (ref. D pic.5).
- 04=model year.

Pic.6

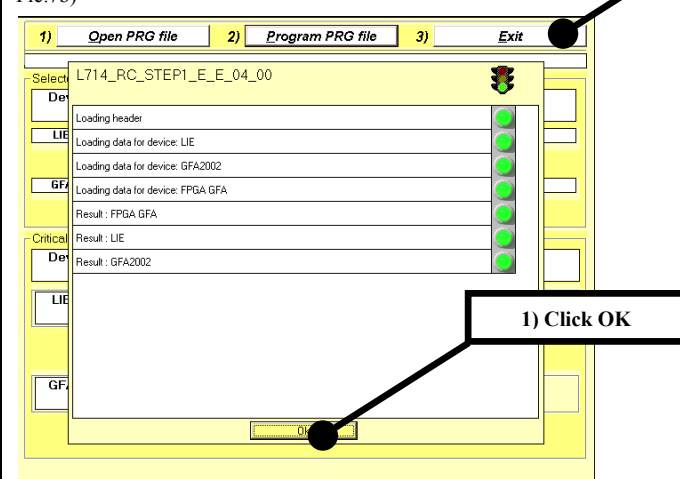


- 1.16 Click on “open”(fig.9 B) and the system automatically loads the file.
- 1.17 Select “Program PRG file” (pic.5 ref. B)
- 1.18 Enter in “Chassis number”(pic.7) the complete V.I.N. of the vehicle (17 digits) then click “OK” in order to re-flash the ECU.
- 1.19 Click “OK” in pic.7b.
- 1.20 Clicca “Exit”. (pic.7b).

Pic.7 a)



Pic.7b)




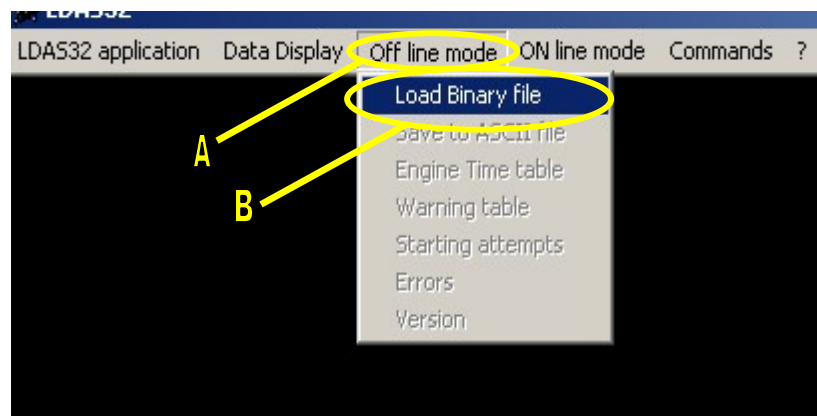
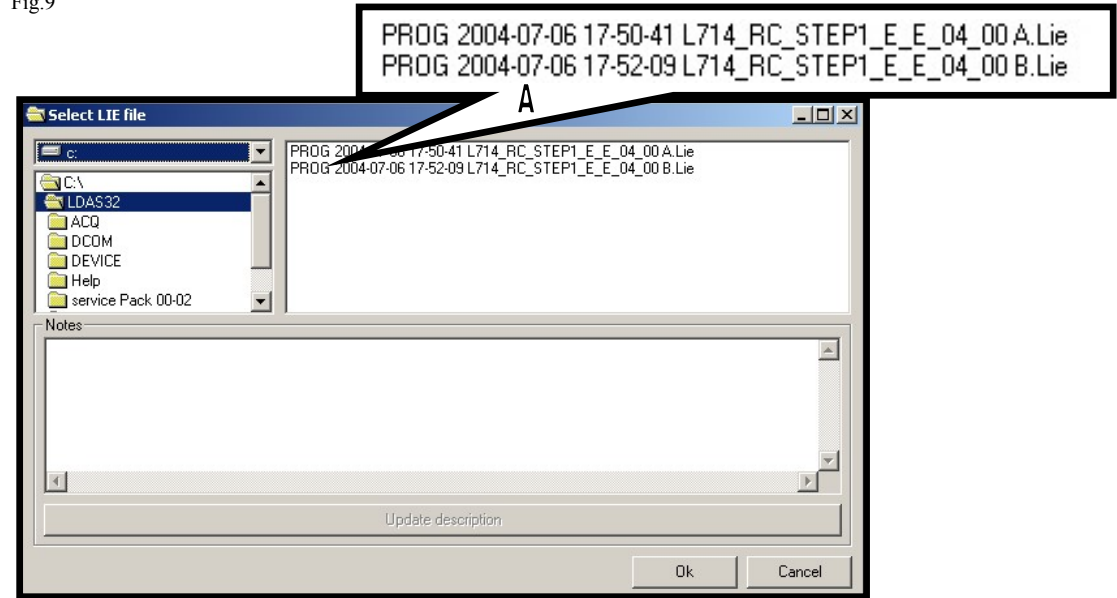
- 1.21 After the ECU re-flash re-open the program clicking the icon  on the desktop bar of the desktop de.
- 1.22 Select “Off line mode” from the tool bar (ref A fig.8).
- 1.23 Select “Load Binary file” in the pull down menu.

Fig.8



- 1.24** The system creates two files one that reports the data before the ECU programming and another one after it. They are identified by the capital letters A and B (pic.9 ref. A).

Fig.9




- 1.25** The system creates two files, one that reports the data before the ECU programming and another one after it. They are identified by the capital letters A and B (pic.9 ref. A).
- 1.26** Delete all the possible errors stored in the system using LaRA-AS and LDAS (erase fault memory code).



- 1.27** Enclose the mentioned files (pic.9 ref. A) to the **warranty claim ont the Warranty Web System.**
- 1.28** Put on the two LIE ECUs the sticker (p/n 901475000) for identification that the reflash was done. Fill in with the number: L140.A-???.04 (?? Number of the service group) and date.

Automobili Lamborghini

Service Campaign



Numero - Nummer - Number

Data - Datum - Date / /

Eseguito dal Concessionario - Ausgeführt vom Händler - Done by Dealer

Firma - Unterschrift - Signature _____

- 1.29** Disconnect the computer.
1.30 Go on with step D.

D Road test:

- 1.31** Turn the engine on and warm it up until the water and oil temperature are higher than **90 °C**. For this purpose it is recommended to drive the car for at least ten kilometres. Now the system automatically starts a “*self learning*” procedure***.

*****Warnings:** The engine can idling irregularly because the throttle valve is not properly adjusted.

- 1.32** Once the temperature is 90 °C wait **60 seconds** so that the system acquires the data for the DBW adjustment.
- 1.33** Let the engine run at idle until it becomes stable.