

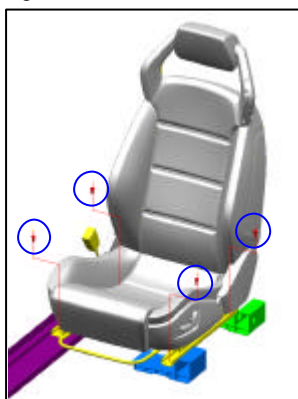


Procedure: L140-05.04

Operation: Correct connector fitting (driver and passenger sides)

- 1.1 Suitably cover the part involved and the areas around it (tunnel..etc) so as to prevent damage to them. For the same reason, take off anything that might cause damage e.g.: watch, ring,.....etc.
- 1.2 Remove the seat anchor bolts (Fig. 1)

Fig. 1



- 1.3 Slightly raise the seat and confirm that connectors of the car's harness Ref. 1 and 2 Fig. 2 are fixed with clips (p/n: N 90926601 Fig.6) to the bracket under the seat in accordance with the schematic in Fig. 5)
 - 1.4 If they are anchored as specified above, go to point 1.13 , if not proceed to the next point
 - 1.5 Disconnect the connectors under the seat (see photo 2)
- Caution** the black connector (Fig. 2 ref. 4) is anchored to the seat with clips (p/n: 90926601 Fig. 5) at point 4 (see Fig. 5). It is therefore necessary to unclip the clip before removing it.

Fig. 2 (harness in the car)

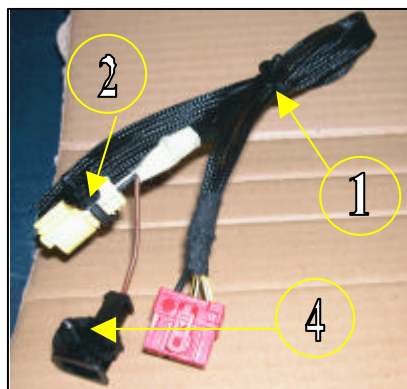
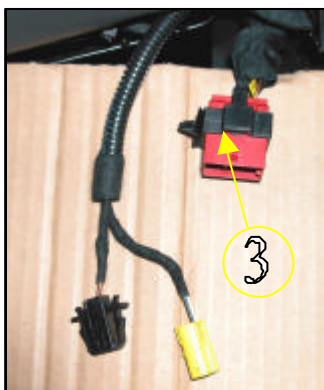
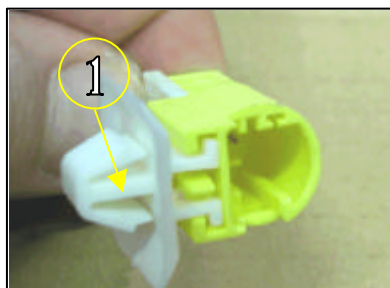


Fig. 3 (car harness)



1.6 If there is a yellow connector as in Fig. 4 eliminate the white clips ref. 1.

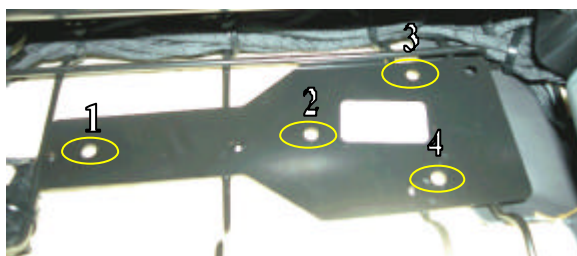
Fig. 4



1.7 Once the seat has been removed, place it on a suitable working surface free of objects that might damage it accidentally.

1.8 Make two holes (ref 1 and 2 Fig. 5) Ø 6.5 mm in diameter on the bracket under the seat in the position indicated in photo 2.

Fig.5 Schematic showing the anchorage of the connector to the bracket under the seat

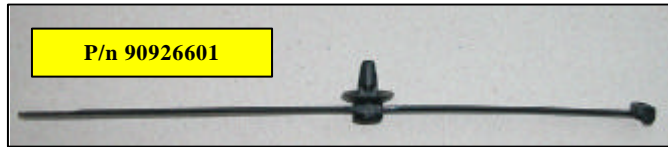


- 1) Car harness (Fig. 1)
- 2) Yellow connector (Fig. 2 ref. 2)
- 3) Red connector (Fig. 1 ref. 3)
- 4) Black connector (Fig.1 ref. 4)

1.9 Connect the clips p/n: 90926601 (Fig. 6) on the harness in the car (Fig. 2) exactly at the points shown below:

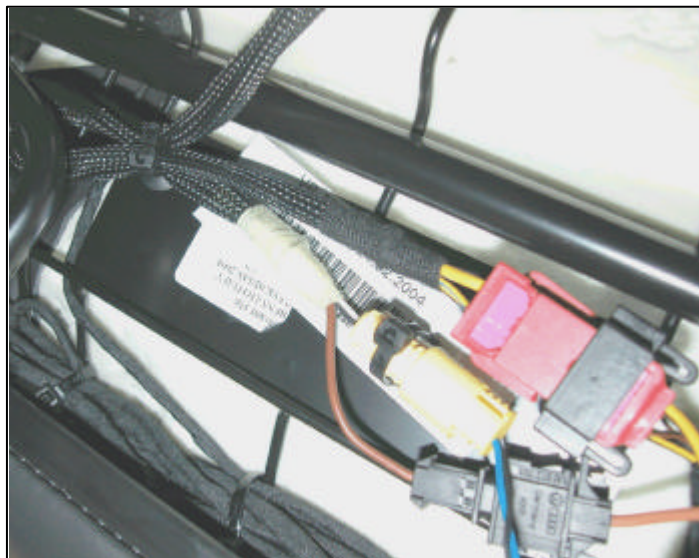
- Yellow connector (fig. 2 ref. 2)
- Harness body (fig. 2 ref.1)

Fig. 6



- 1.10 Put the seat back into the car.
- 1.11 Connect up the connectors.
- 1.12 Fix the connector clips in their holes following the schematic shown in Fig. 5.
Check that the final result conforms with Fig. 6.

Fig. 7



- 1.13 Refit the seat with a tightening torque of **23.3Nm**