



**Technical Service
BULLETIN**

August 24, 2006

Title:

**M.I.L. "ON" DTC P0335 AND/OR P1340:
INTERMITTENT HOT SOAK NO-START**

Models:

'05 - '06 4Runner (2UZ-FE), Land Cruiser,
Sequoia, & Tundra (2UZ-FE)

ENGINE
EG052-06

Introduction Some customers may experience a M.I.L. "ON" condition with DTCs P0335 and/or P1340 with intermittent hot soak no-start. The camshaft position sensor assembly has been improved to prevent this concern.

- P0335 (Crankshaft Position Sensor "A" Circuit)
- P1340 (Camshaft Position Sensor "A" [Bank 1 Sensor 1])

**Applicable
Vehicles**

- **2005 - 2006** model year **4Runner** and **Tundra** vehicles equipped with the **2UZ-FE engine**.
- **2005 - 2006** model year **Land Cruiser** and **Sequoia** vehicles.

**Parts
Information**

PREVIOUS PART NUMBER	CURRENT PART NUMBER	PART NAME	QTY
19300-50010	19300-50030	Camshaft Position Sensor Assembly	1

**Warranty
Information**

OP CODE	DESCRIPTION	TIME	OFFP	T1	T2
EG5036	R & R Camshaft Position Sensor Assembly	1.0	19300-50010	8A	99

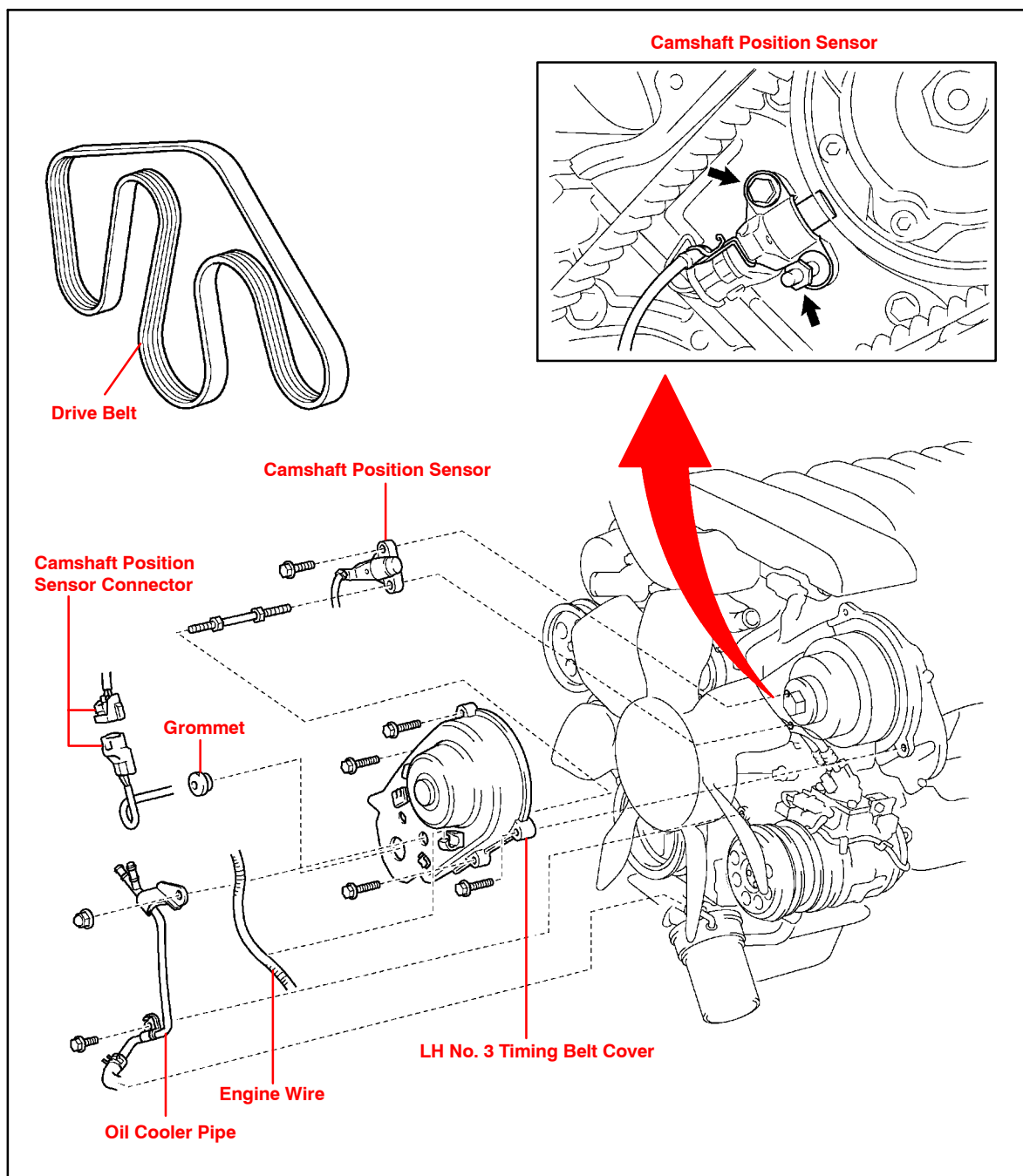
Applicable Warranty*:

This repair is covered under the Toyota Comprehensive Warranty. This warranty is in effect for 36 months or 36,000 miles, whichever occurs first, from the vehicle's in-service date.



* Warranty application is limited to correction of a problem based upon a customer's specific complaint.



Components



Required
SSTs

ITEM NO.	SPECIAL SERVICE TOOLS (SSTs)	PART NUMBER	QTY	DRW**
1	Toyota Diagnostic Tester Kit* NOTE: <ul style="list-style-type: none"> All components from this kit/set are required. 12 Megabyte Diagnostic Tester Program Card (P/N 01002593-005) with version 13.4a Software (or later) is required. 	TOY220036	1	9
2	CAN Interface Module Kit* NOTE: <ul style="list-style-type: none"> All components from this kit/set are required. 	01002744	1	9

* Essential SSTs.

** Refers to drawer number in SST Storage System.

NOTE:

Additional Diagnostic Tester Kits, CAN Interface Modules, Program Cards, or other SSTs may be ordered by calling SPX/OTC at 1-800-933-8335.

Repair
Procedure

- Using the Diagnostic Tester, check for Diagnostic Trouble Codes (DTCs).
- If DTCs P0335 and/or P1340 are present and the customer reports difficulty starting the vehicle when it is hot, refer to the Technical Information System (TIS), 2005 - 2006 model year Repair Manual for applicable model: *Ignition (2UZ-FE): Camshaft Position Sensor: Removal*.

HINT:

Not ALL cases will include difficulty starting after a hot soak. If P0335 and/or P1340 are present and can be duplicated after clearing the DTCs with the Diagnostic Tester but the hot soak no-start condition is NOT duplicated, use the auto probe and monitor the camshaft position sensor output and compare with the illustration in the Diagnostics section of the Repair Manual for DTC P1340. If the camshaft position sensor signal waveform does NOT match, replace the camshaft position sensor.

- Replace the camshaft position sensor.
- Using the Diagnostic Tester, clear the DTCs.
- Test drive the vehicle for a minimum of 10 minutes. Then use the Diagnostic Tester to verify that NO pending DTCs set.