



**Technical Service
BULLETIN**

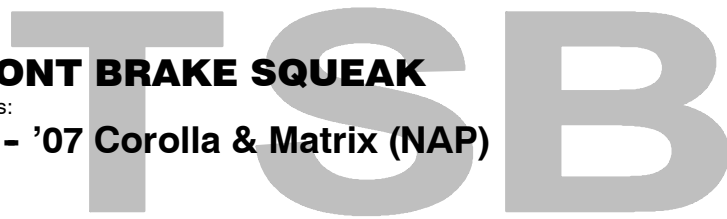
August 24, 2007

Title:

FRONT BRAKE SQUEAK

Models:

'03 - '07 Corolla & Matrix (NAP)



REVISED

BR004-07
BRAKES

TSB REVISION NOTICE:

- **October 30, 2007: The Parts Information table has been updated. Previous versions of this TSB should be discarded.**

Introduction Some customers may experience front brake squeak noise when the car is traveling in reverse at low speeds. Updated front disc brake cylinder (caliper) mountings and disc brake pad support plates are available to improve this condition.

- Applicable Vehicles**
- **2003 - 2007** model year **Corolla** and **Matrix NAP-built** vehicles produced **BEFORE** the Production Change Effective VINs shown below.

Production Change Information

MODEL	PLANT	PRODUCTION CHANGE EFFECTIVE VIN
Corolla	NUMMI	1NXBR32E#7Z920892
	TMMC	2T1BR32E#7C838401
Matrix	TMMC	2T1KR32E#7C679540

Warranty Information

OP CODE	DESCRIPTION	TIME	OPF	T1	T2
473301	Front Disc Brake Pad and/or Disc Brake Pad Shim (Both Sides)	0.8	47721-02140	91	13

Applicable Warranty*:

This repair is covered under the Toyota Comprehensive Warranty. This warranty is in effect for 36 months or 36,000 miles, whichever occurs first, from the vehicle's in-service date.

* Warranty application is limited to correction of a problem based upon a customer's specific complaint.

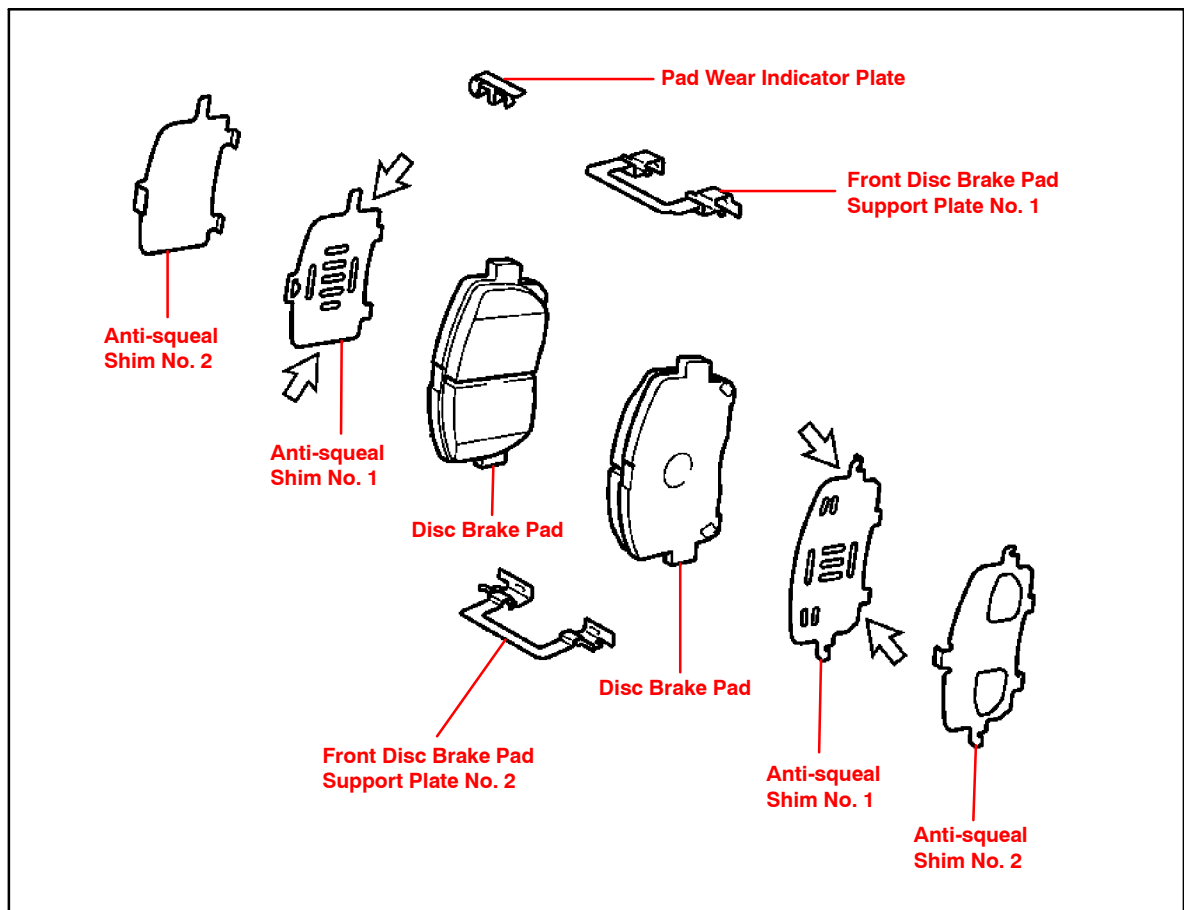


Parts Information

NOTE:
ALL parts MUST be replaced as a set.

PREVIOUS PART NUMBER	CURRENT PART NUMBER	PART NAME	QTY
47721-02140	47721-02141	Mounting, Disc Brake Cylinder (Pad Holder/Caliper Mount) LH & RH	2
47716-02100	04947-02120	Plate, Pad Support , Kit	1
47717-02050			
47775-02090	Same	Boot, Bushing Dust	4
08887-80609	Same	Disc Brake Caliper Grease (50 g tube)	1

Components



Repair Procedure

1. Conduct a road test to verify the noise condition — noise usually occurs when backing out of a parking space and/or turning in reverse.
2. Remove and replace the front disc brake pad support plate (2 per each caliper).

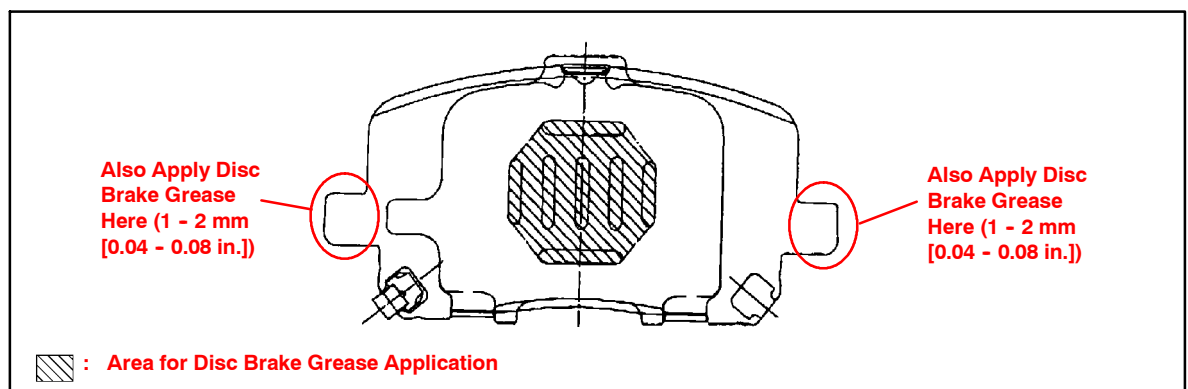
NOTE:

- Use the same procedures for the RH side and LH side.
- The procedures listed below are for one side.

- A. Remove the front wheel.
- B. Remove the caliper by holding the front disc brake slide pin and removing the 2 bolts.
- C. Remove the 2 front brake pads from the front disc brake cylinder mounting.
- D. Remove the anti-squeal shims and the pad wear indicator plates from each pad.
- E. Remove the 2 front disc brake pad support plates from the cylinder mounting.
- F. Remove the front disc brake cylinder mounting plate by removing the 2 bolts.
- G. Install the NEW disc brake cylinder mounting plate with the 2 bolts.
Torque: 107 N•m (1089 kgf•cm, 79 ft•lbf)
- H. Install the 2 NEW disc brake pad support plates.
Apply disc brake grease to the back of the brake pad support plate.
- I. Install the front anti-squeal shims.
 - a. Apply disc brake grease to the anti-squeal shims.

NOTE:

- When replacing worn pads, the anti-squeal shims **MUST** be replaced together with the pads.
- Install the shims in the correct positions and directions.
- Apply a thin layer of disc brake grease to the area that contacts the anti-squeal shim.
- Disc brake grease can come out slightly from the area where the anti-squeal shim is installed.
- **Make sure that disc brake grease is NOT applied onto the lining surface.**



**Repair
Procedure**
(Continued)

- b. Install the anti-squeal shims and the pad wear indicators to each pad.

NOTE:

Install the pad wear indicators in the correct positions and directions.

- J. Install the 2 front brake pads with anti-squeal shims to the disc brake cylinder mounting.

Apply a small amount of the disc brake grease (1 - 2 mm [0.04 - 0.08 in.] thick) to the areas shown in the illustration.

NOTE:

Do NOT apply grease to the friction surfaces of the brake pads or the disc rotor.

- K. Install the caliper with the 2 bolts.

Torque: 34 N•m (350 kgf•cm, 25 ft•lbf)

- L. Install the front wheel.

Torque: 103 N•m (1,050 kgf•cm, 76 ft•lbf)

3. Road test the vehicle to confirm the front brake “squeak” noise is NO longer present.