

February 24, 2016

02352 Version 2

## 2016 TLX: TQI Information

Supersedes 15-044, dated September 10, 2015, to revise the information highlighted in **yellow**.

### AFFECTED VEHICLES

Year	Model	Trim Level		
		2016	TLX	4-Cylinder 2WD: P-AWS, 8-Speed DCT
		Base	Base	N/A
		Technology	Technology	Technology
		N/A	Advance	Advance

### REVISION SUMMARY

- Under TQI PROCEDURES, retitled 10. Do the Idle Learn Procedure to read 10. Do the PCM Idle Learn Procedure.
- Under TQI PROCEDURES, added 11. Do CKP-Pattern Learn Procedure after 10. Do PCM Idle Learn Procedure. Renumbered all succeeding steps to reflect this addition.

### INTRODUCTION

This bulletin covers the total quality inspection (TQI) of the 2016 TLX. It includes these procedures:

1. Remove the Exterior Protective Coatings	11. Do the CKP-Pattern Learn Procedure
2. Install the Backup Fuse	12. Install the Shift Lock Release Cover
3. Remove the Interior Protective Coverings	13. Initialize the Audio-Navigation Unit Anti-Theft Function, and Set the AM/FM Audio Unit Presets
4. Install the Floor Mats	14. Set the Clock (Models Without Navigation)
5. Check the Battery	15. Set the Compass Zone (Models Without Navigation)
6. Install the Body Plugs	16. Check the Compass Calibration (Models Without Navigation)
7. Install the Front Strakes	17. Check/Refresh the SiriusXM <sup>®</sup> Radio Dealer Demo Service (Except in Alaska and Hawaii)
8. Install the Front License Plate Holder	18. Check the ACC, LKAS, Lane Departure Warning, Forward Collision Warning, Collision Mitigation Braking System, and Road Departure Mitigation Indicators (If Equipped)
9. Set the Tire Pressures	19. Check Bluetooth <sup>®</sup> HandsFreeLink <sup>®</sup> (HFL)
10. Do the PCM Idle Learn Procedure	

To do a TQI on a model with a navigation system, be sure to complete S/B 15-045, 2016 TLX: TQI of the Navigation System.

**CLIENT INFORMATION:** The information in this bulletin is intended for use only by skilled technicians who have the proper tools, equipment, and training to correctly and safely maintain your vehicle. These procedures should not be attempted by “do-it-yourselfers,” and you should not assume this bulletin applies to your vehicle, or that your vehicle has the condition described. To determine whether this information applies, contact an authorized Acura automobile dealer.

## CLAIM INFORMATION

Reimbursement Time: 1.4 hours

NOTE: This time includes the TQI of the navigation system (if equipped).

## TQI PROCEDURES

### ***Before Starting***

Review these items:

- Perfect Delivery documents, especially the information on battery maintenance and tire pressures
- TQI checklist in the maintenance journal

Make sure you record the TQI on the appropriate pages of the maintenance journal. The TQI is not done until this bulletin and the TQI checklist are both complete. Note on the repair order any repairs or problems that cannot be fixed within a few minutes.

Remove all TQI items from the trunk and glove box.

### ***Starting the Vehicle Without the Backup Fuse***

To prevent parasitic draw, the vehicle comes from the factory with the No. 29 BACKUP (10 A) fuse removed from the main under-hood fuse/relay box. With it removed, the engine will not start when you apply the brake pedal and press the ENGINE START/STOP button.

If you need to move the vehicle before doing the TQI, follow these steps:

1. Press the ENGINE START/STOP button once.



2. When the indicator blinks, touch the keyless remote to the ENGINE START/STOP button.



Touch the keyless remote to the blinking ENGINE START/STOP button (blinking for 30 seconds).

NOTE: The indicator will switch from blinking to steady when communication is complete.



Indicator is on steady.  
Vehicle is ready to start.

3. Start the engine by pressing the ENGINE START/STOP button while applying the brake pedal. You must start the engine within **10 seconds**. If you press the button without applying the brake pedal, the ACCESSORY power mode will set.

### 1. Remove the Exterior Protective Coatings

Carefully remove all of the exterior protective coatings. See S/B 96-009, *Removal of Protective Coatings During TQI*.

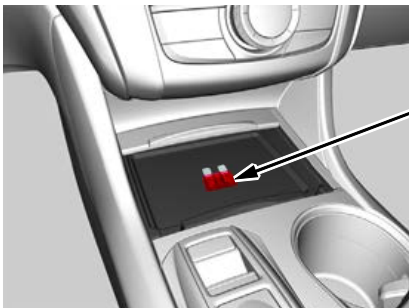
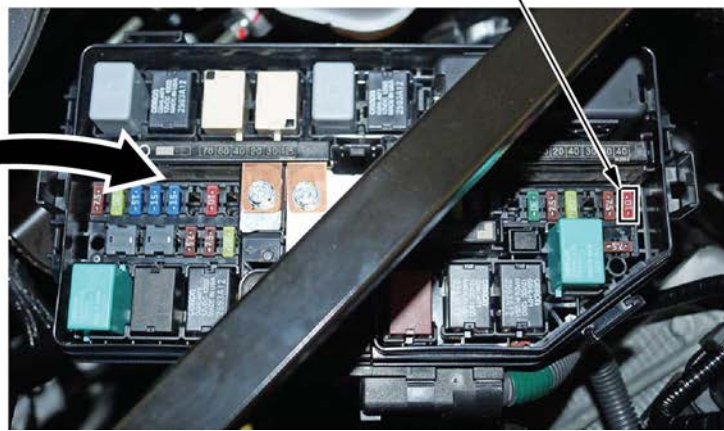
## 2. Install the Backup Fuse

To prevent battery drain during vehicle shipping, the No. 29 BACKUP (10 A) fuse is removed from the main under-hood fuse/relay box and stored in the tray inside the technology pocket, ahead of the electronic gear selector (6-cylinder models) or shift lever (4-cylinder models). Make sure the power mode is set to OFF before reinstalling this fuse.

MAIN UNDER-HOOD FUSE/RELAY BOX



No. 29 BACKUP (10A) FUSE



Fuse is stored in the tray inside the technology pocket.

## Vehicle Interior

### 3. Remove the Interior Protective Coverings

There are several protective coverings on the interior trim pieces and some areas of the carpet. A couple of new items were added. One is the protective cover on the interface dial. The other is two paper tags on each of the front head restraints (one at the front and one at the rear). Carefully remove all items with clean hands to avoid soiling any surfaces. If any of the interior is dirty, clean it with mild soap or an Acura cleaning product such as Leather & Vinyl Cleaner (P/N 08700-9214A) or Carpet Spot Remover (P/N 08700-9215A).

HEAD RESTRAINTS



Remove both tags.

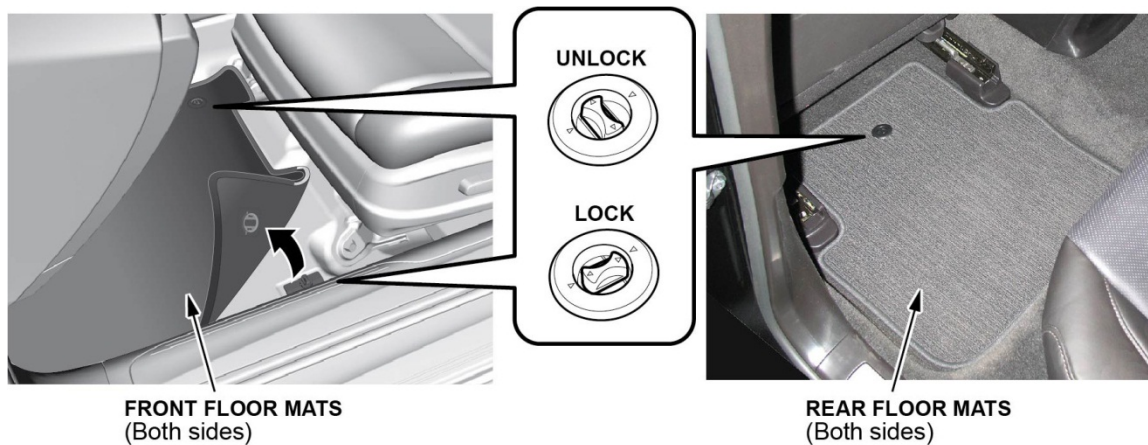
INTERFACE DIAL



Remove protective cover.

#### 4. Install the Floor Mats

Install the floor mats in the appropriate positions. Place the driver's and front passenger's floor mat eyelets over the anchors on the floor, then turn the knobs clockwise to the lock position. Do the same for the rear seat floor mats. The anchors for those mats are on the floor under the front seats.



#### Under-Hood (Engine Cold)

##### 5. Check the Battery

This vehicle comes with either a conventional flooded lead acid (FLA) battery or the new absorbent glass mat (AGM) battery, depending on the trim level. Here is the breakdown:

- **4-cylinder 2WD models:** FLA
- **6-cylinder 2WD models:** FLA
- **6-cylinder AWD models:** AGM

Each battery type has its own uniquely tuned charging and battery management systems, therefore **cannot** be interchanged.

To ensure long battery life and that the client gets a fully charged battery as outlined in S/B 89-006, *Battery Maintenance at Dealers*, it must be checked at these times:

- When the vehicle first arrives at the dealership
- During the TQI, if done at a later date
- At regular intervals
- Just before vehicle delivery

If you plan to keep the vehicle in long-term storage, be sure to remove the No. 29 BACKUP (10 A) fuse.

Test the battery with the ED-18 battery tester using S/B 88-016, *Battery Testing and Replacement*. Make sure the ED-18 has the latest software installed before using it. See S/B 09-027, *ED-18 Battery Tester Update Information*.

If the test results show **GR8 DIAGNOSTIC NEEDED**, you must charge the battery with the GR8 battery diagnostic station. Make sure the GR8 has the latest software installed before using it. See S/B 09-034, *GR8 Battery Diagnostic Station Update Information*.

**NOTE:** When charging an AGM battery, **always** select **AGM Battery**. Serious damage can result if you select **Standard Battery (FLA)**. Also, make sure the negative battery lead is connected to the negative battery post. The temperature probe is in the handle of the negative lead. The GR8 monitors battery temperature during charging so that it does not overheat and destroy the battery.

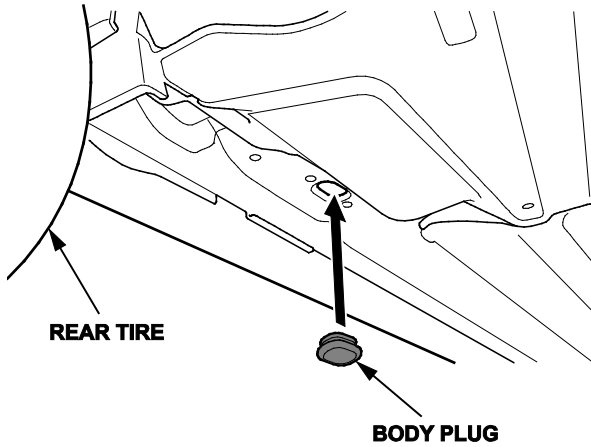
Write down the **GOOD BATTERY** 10-digit code in the maintenance journal. During the TQI, write down the code in the "Under Hood (Engine Cold)" section. Then, at vehicle delivery, write it down in the "Final Inspection (At Delivery)" section.

**Vehicle Exterior (Vehicle Raised to Full Height)**

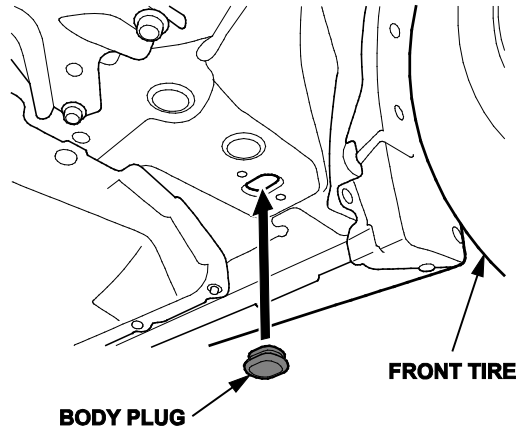
**6. Install the Body Plugs**

Install the four body plugs as shown. If they are not installed, the vehicle could make a wind noise that is hard to troubleshoot.

**REAR BODY PLUG**

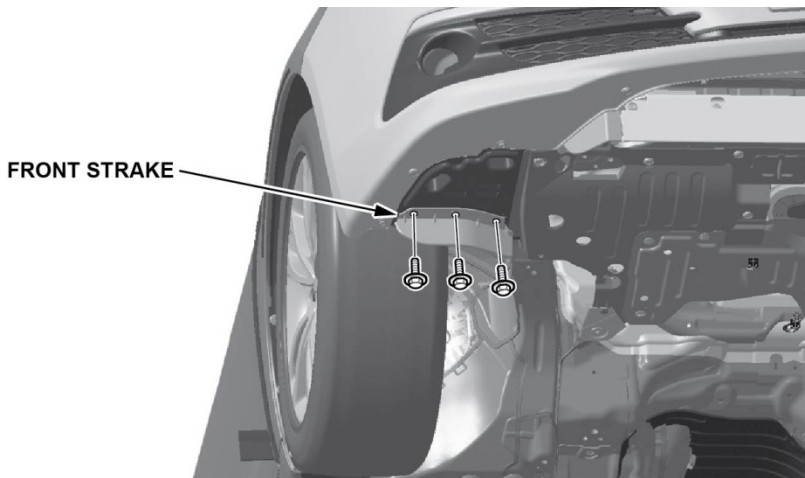


**FRONT BODY PLUG**



**7. Install the Front Strakes**

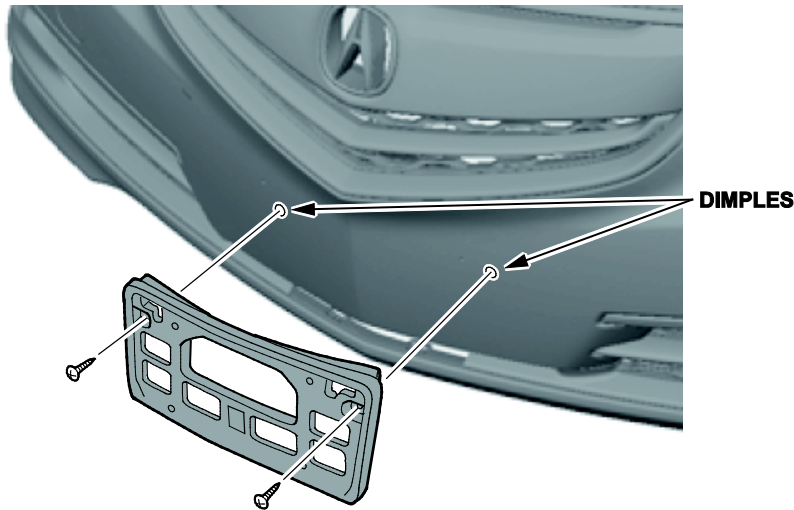
Install the front strakes as shown.



### **Vehicle Exterior (Vehicle Lowered to Half-Height)**

#### **8. Install the Front License Plate Holder**

If state regulations require the use of a front license plate, install the front license plate holder as shown.



### **Vehicle Exterior (Vehicle Lowered to Ground)**

#### **9. Set the Tire Pressures**

To prevent flat spots during vehicle shipping and storage, the tires are inflated to over **40 psi**. If the vehicle is going into dealer storage, leave the tire pressures at **40 psi** until it is sold (see the “Perfect Delivery Action Plan”).

If the vehicle is moved to the sales lot or is sold, set the tire pressures as follows:

NOTE:

- You must do these steps exactly as written to enable full function of the TPMS Fill Assist System.
- If you are in a cold climate region, make sure the tires are at the same temperature as the outside air before adjusting the pressures; otherwise, the Low Tire Pressure/TPMS indicator may come on in cold weather.
  1. Set the power mode to ON.
  2. Use a tire pressure gauge with a bleeder valve to quickly lower the pressure in each tire to around **28 psi**.
  3. Set the pressure in each tire to the recommended value listed on the driver’s doorjamb label and check it with a hand-held gauge.
  4. Test-drive the vehicle for at least **2 minutes** above **15 mph**. If the MID does not show the tire pressures, make sure you completed the test drive as specified.

NOTE: This vehicle does not have a spare tire; it comes with a tire repair kit stored under the trunk lining. An optional spare tire wheel kit can be ordered separately.

## Under-Hood (Engine Idling)

### 10. Do the PCM Idle Learn Procedure

To ensure a steady engine idle, do the applicable PCM idle learn procedure after installing the No. 29 BACKUP (10 A) fuse:

NOTE: This procedure must also be done after updating or replacing the PCM. It does not need to be done after clearing DTCs.

#### 4-Cylinder Models

1. Make sure all electrical items (A/C, audio unit, rear window defogger, lights, etc.) are turned off.
2. Start the engine, and let it reach operating temperature (the cooling fans cycle twice).
3. Let the engine idle for **10 minutes** with the throttle fully closed.

#### 6-Cylinder Models

1. Make sure all electrical items (A/C, audio unit, rear window defogger, lights, etc.) are turned off.
2. Start the engine, and let it reach operating temperature (the cooling fans cycle twice).
3. Let the engine idle for **10 minutes** with the throttle fully closed.
4. Set the power mode to OFF.
5. Jump the SCS line with the HDS.
6. Wait **60 seconds**, then exit the SCS mode.

### 11. Do the CKP-Pattern Learn Procedure

To ensure proper engine operation, do the CKP-pattern learn procedure after doing the PCM idle learn procedure.

#### NOTE:

- Make sure all electrical loads (A/C, heated seats, audio unit, etc.) are turned off before doing this procedure.
  - Failure to do this procedure correctly may result in poor driveability along with misfire DTCs.
1. While driving on a level road, decelerate (with the throttle fully closed) from **2,500 rpm to 1,000 rpm** with the transmission in 2<sup>nd</sup> gear.
  2. Repeat step 1 three times.

## Vehicle Interior

### 12. Install the Shift Lock Release Cover

Install the shift lock release cover as shown.

NOTE: For 6-cylinder models, this cover just serves as a trim piece.

#### 6-CYLINDER MODELS:

TRIM PIECE  
Stored in glove box.



#### 4-CYLINDER MODELS:

SHIFT LOCK RELEASE COVER  
Stored in glove box.





### 13. Initialize the Audio-Navigation Unit Anti-Theft Function, and Set the AM/FM Audio Unit Presets

#### *Models Without Navigation*

1. After installing the No. 29 BACKUP (10 A) fuse, set the power mode to ON, then press and hold the audio unit power button for at least **2 seconds**. This synchronizes the audio unit with the vehicle and initializes the system for use.

NOTE: In the glove box, you will find a small sheet of two labels. Each label has the five-digit anti-theft code and the audio-navigation unit serial number printed on it. Remove one label, and attach it to the RO. The other one should be given to the client for safekeeping, rather than left in the vehicle.

2. Enter a local AM or FM station on all of the audio unit presets (AM, FM1 and FM2). To enter a station, tune to it, change the screen to the preset screen, then press and hold the preset number that you want to store that station.

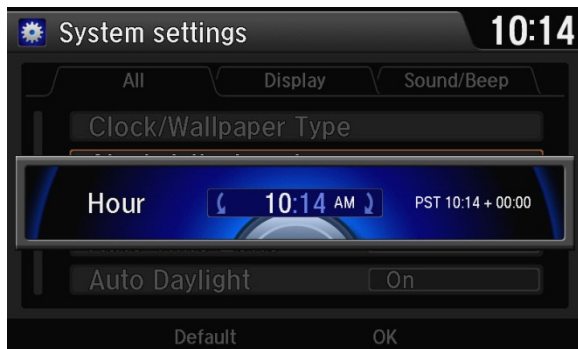
#### *Models with Navigation*

1. Do S/B 15-045, 2016 TLX: TQI of the Navigation System.
2. Enter a local AM or FM station on all of the audio unit presets (AM, FM1 and FM2). To enter a station, tune to it, change the screen to the preset screen, then press and hold the preset number that you want to store that station.

### 14. Set the Clock (Models Without Navigation)

To set the clock, follow these steps:

1. Press the SETTINGS button.
2. Turn the interface dial to select **Systems Settings**, then press the ENTER button.
3. Turn the interface dial to select **Clock, Clock Adjustment**, then press the ENTER button.
4. Turn the interface dial to select the hour, then press the ENTER button.
5. Turn the interface dial to select the minutes, then press the ENTER button.

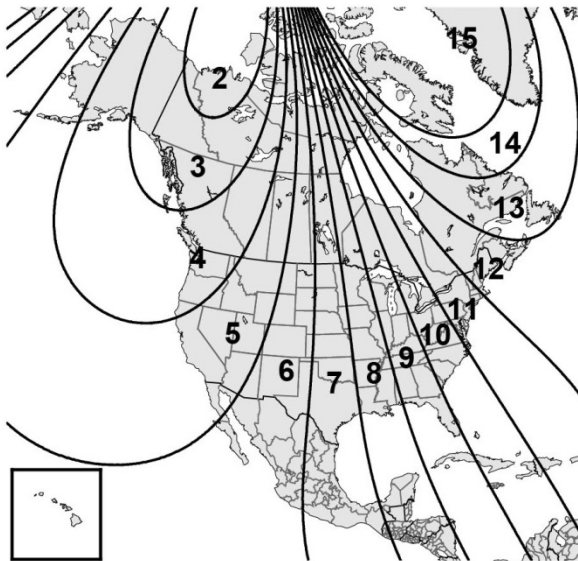


### 15. Set the Compass Zone (Models Without Navigation)

In most areas, there is a variation between magnetic north and true north. At the TQI, the compass zone needs to be set to your geographic zone to compensate for this variation.

To set the compass zone, do this:

1. Set the power mode to ON.
2. Press and hold the MENU button for about **5 seconds** until the display shows the compass setting menu items.
3. Find the zone number in this map.



4. Turn the interface dial to select **ZONE**, then press the ENTER button. The display will show the currently selected compass zone number.
5. Turn the interface dial to select your zone, then press the ENTER button.
6. Press the BACK button to return the display to normal.

### 16. Check the Compass Calibration (Models Without Navigation)

If the compass shows the wrong direction or the **CAL** indicator blinks, manually calibrate the system with this procedure:

NOTE: Do this procedure in an open area, away from buildings, power lines, and other vehicles.

1. Set the power mode to ON.
2. From the top screen of any audio source, press and hold the ENTER button for **10 seconds**. The display will switch to the **Compass Settings** screen.
3. Turn the interface dial to select **Calibration**, then press the ENTER button.
4. When the display changes to **Calibration, Start**, press the ENTER button.
5. Drive the vehicle slowly, in two complete circles. The compass should show a direction and the **CAL** indicator should go off.

### 17. Check/Refresh the SiriusXM® Radio Dealer Demo Service (Except in Alaska and Hawaii)

The audio system comes from the factory activated with the SiriusXM® Radio dealer demo service. Once you install the No. 29 BACKUP (10 A) fuse, the system should receive the full range of available channels. You can see a full list of channels at [siriusxm.com](http://siriusxm.com).

While watching the audio unit display, tune to several channels within the full lineup. If you can tune to all of the channels, the dealer demo service is activated.

**18. Check the ACC, LKAS, Lane Departure Warning, Forward Collision Warning, Collision Mitigation Braking System, and Road Departure Mitigation Indicators (If Equipped)**

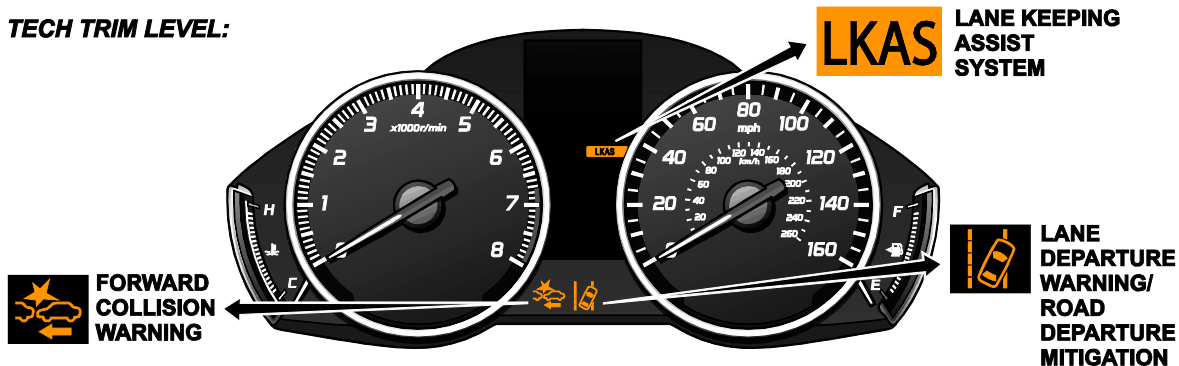
When you first set the power mode to ON, these indicators should come on for a few seconds and then go off:

- ACC (Adaptive Cruise Control [with low speed follow]) (Advance models)
- LKAS (Lane Keeping Assist System) (Technology and Advance models)
- Lane Departure Warning (LDW) (Technology and Advance models)
- Forward Collision Warning (FCW) (Technology and Advance models)
- Collision Mitigation Braking System (CMBS) (Advance models)
- Road Departure Mitigation (RDM) (Technology models)

**ADVANCE TRIM LEVEL:**



**TECH TRIM LEVEL:**



## 19. Check *Bluetooth*<sup>®</sup> HandsFreeLink<sup>®</sup> (HFL)

To ensure HFL is working, start the engine, then press and hold the Hang-up/Back button on the steering wheel for about **10 seconds**. You should hear “TCU is OK.” (models with navigation) or “The HFT is OK” (models without navigation). If you do not hear this message, see the service information for troubleshooting information.

