

March 22, 2017

05972 Version 7

## Firm 2nd to 3rd Gear Upshifts Under Certain Driving Conditions

Supersedes 15-040, dated July 19, 2016, to revise the information highlighted in **yellow**

### AFFECTED VEHICLES

Year	Model	Trim	VIN Range
2015	TLX	V6 2WD	19UUB2...FA000001 to 19UUB2...FA021489
2015	TLX	V6 SH-AWD®	19UUB3...FA000001 to 19UUB3...FA007728

### REVISION SUMMARY

- Under WARRANTY CLAIM INFORMATION, additional information was added.
- REPAIR PROCEDURE information was changed.

### BACKGROUND

Under very specific driving conditions the customer may notice the 2-3 upshift is more pronounced (firmer) than the other shifts. The transmission is working properly and this does not indicate a problem. This is not a durability concern.

### CORRECTIVE ACTION

To get optimal performance out of the transmission, update the TCM software, clear any DTCs, and do the PCM idle learn procedure.

After the update has been done, if the client returns after driving the vehicle 500 miles and is still concerned about the 2-3 shift, go to REPAIR PROCEDURE; REPLACE TRANSMISSION.

#### NOTE:

- The transmission is constantly learning.
- After the update, it is important for the transmission to learn and to adapt to the client's driving habits. This process can only be done by allowing the client to drive the vehicle for 500 miles.
- **Any repair done before the client has driven 500 miles after installing the software update is subject to debit.**
- To verify the correct software has been installed and the PCM idle learn is complete before ordering a transmission, send Tech Line a transmission snapshot when you feel the hard shift. Failure to provide a snapshot at the time of the order review will cause the order to be **denied** and it will have to be resubmitted after the snapshot is sent.

**CLIENT INFORMATION:** The information in this bulletin is intended for use only by skilled technicians who have the proper tools, equipment, and training to correctly and safely maintain your vehicle. These procedures should not be attempted by "do-it-yourselfers," and you should not assume this bulletin applies to your vehicle, or that your vehicle has the condition described. To determine whether this information applies, contact an authorized Acura automobile dealer.

## WARRANTY CLAIM INFORMATION

The normal warranty applies.

Operation Number	Description	Flat Rate Time	Defect Code	Symptom Code	Template ID	Failed Part Number
2235A2	Update the TCM software and clear any DTCs.	0.2 hr	03214	03217	15-040N	06280-5L9-A52
A	Do the PCM idle learn procedure.	0.1 hr				

Operation Number	Description	Flat Rate Time	Defect Code	Symptom Code	Template ID	Failed Part Number
218102	Base or Tech (2WD) – Replace the transmission and torque converter.	5.8 hrs	03214	03217	15-040W	06227-5J4-000
<b>B</b>	Alignment – add	0.4 hrs				
218102	Advance (2WD) – Replace the transmission and torque converter.	5.8 hrs	03214	03217	15-040X	06227-5J4-000
<b>B</b>	Alignment – add	0.4 hrs				

Operation Number	Description	Flat Rate Time	Defect Code	Symptom Code	Template ID	Failed Part Number
218102	Base or Tech (SH-AWD) – Replace the transmission and torque converter.	5.8hrs	03214	03217	15-040Y	06227-5J4-000
A	For SH-AWD - add	0.4 hr				
<b>B</b>	Alignment – add	0.4 hrs				
218102	Advance (SH-AWD) – Replace the transmission and torque converter.	5.8 hrs	03214	03217	15-040Z	06227-5J4-000
A	For SH-AWD – add	0.4 hr				
<b>B</b>	Alignment – add	0.4 hrs				

Skill Level: Repair Technician

## REPAIR PROCEDURE – UPDATE TCM

### SOFTWARE INFORMATION

NOTE: Unnecessary or incorrect repairs resulting from a failure to update the HDS is not covered under warranty.

i-HDS Software Version: **1.001.004 or later**

J2534 Software Information:

Rewrite Version **1.0.1.12 or later**

Database update **08-JUN-2016 or later**

**Before beginning the repair, make sure that both the i-HDS and J2534 software are updated as listed above.**

**Do only the update listed in this service bulletin.**

**You cannot apply the updates with the MVCI as a standalone tool.** To update the vehicle you must use the MVCI or the DST-I interface in conjunction with the J2534 Rewrite PC application on the i-HDS.

For more information about updating the i-HDS and vehicle systems, refer to Service Bulletin 01-026, *Updating Control Units/Modules*.

Year/Model	Trim	Program ID (or later)	Program P/N (or later)
2015 TLX	2WD Base/Tech	J43150	28101-5J4-3150
2015 TLX	2WD Advance	J43160	28101-5J4-3160
2015 TLX	SH-AWD Base/Tech	L93150	28101-5L9-3150
2015 TLX	SH-AWD Advance	L93170	28101-5L9-3160

1. Update the TCM software. Refer to S/B 01-026, *Updating Control Units/Modules*.

NOTE:

- On vehicles equipped with auto idle stop, the MVCI may indicate error code 56 during the update. If you see the error code, open the hood, disable auto idle stop using the switch in the center console area, and retry the update again leaving the hood open.
  - After completing the software update, check the **Idle Learning** signal in the **PGM-FI Data List**. If it reads **NOT COMPLETE**, check the **Target Idle Torque Correction Learning** value. If it reads **65 N·m (47.9 lb-ft)**, you need to update the PCM. Refer to S/B15-038, *Hesitation, Surge, High Idle, or Auto Idle Stop Does Not Work*, for software update information. If the value reads **12 N·m (8.8 lb-ft)**, complete the idle learn according to the service information.
2. Clear any stored DTCs with the HDS.
  3. Do the PCM idle learn procedure:
    - Make sure all electrical items (A/C, audio unit, rear window defogger, lights, etc.) are turned off.
    - Start the engine and let it reach operating temperature (the cooling fans cycle twice).
    - Let the engine idle for **10 minutes** with the throttle fully closed.
    - Turn the ignition to OFF.
    - Jump the SCS line with the i-HDS.
    - Wait **60 seconds**, then exit the SCS mode.

## REPAIR PROCEDURE – REPLACE TRANSMISSION

### SOFTWARE INFORMATION

NOTE: Unnecessary or incorrect repairs resulting from a failure to update the i-HDS is not covered under warranty.

i-HDS Software Version: **1.001.014 or later**

J2534 Software Information:

PC Application Version **1.0.1.12 or later**

Database update **08-JUN-2016 or later**

**Before beginning the repair, make sure that both the i-HDS and J2534 software are updated as listed above.**

**Do only the update listed in this service bulletin.**

**You cannot apply the updates with the MVCI as a standalone tool.** To update the vehicle you must use the MVCI or the DST-I interface in conjunction with the J2534 Rewrite PC application on the i-HDS.

For more information about updating the i-HDS and vehicle systems, refer to Service Bulletin 01-026, *Updating Control Units/Modules*.

Program ID's for replacement transmission.

Model	Program ID or above	Program ID or Above
2WD BASE, TECH	4A590	28101-5J4-A590
2WD ADVANCE	4A690	28101-5J4-A690
SH-AWD BASE, TECH	9A690	28101-5L9-A690
SH-AWD ADVANCE	9A700	28101-5L9-A700

#### Required Parts for 2WD and SH-AWD:

##### Transmission

Application	Part Number
2WD Base, Technology	06200-5J4-A58RM
2WD Advance	06200-5J4-A68RM
SH-AWD Base, Technology	06200-5L9-A59RM
SH-AWD Advance	06200-5L9-A69RM

#### Required Parts for 2WD and SH-AWD:

Part Name	Part Number	Quantity
Flange Bolt (12 mm x 120 mm)	90051-5J4-000	1
Flange Bolt (12 mm x 70 mm)	90051-R97-000	1
Flange Bolt (10 mm x 30 mm)	90161-T2F-A01	3
Flange Bolt (10 mm x 30 mm)	90163-SDB-A00	3
Flange Bolt (10 mm x 34 mm)	90162-T2A-A00	4
Flange Bolt (10 mm x 35 mm)	90163-SDA-A01	1
Flange Bolt (10 mm x 45 mm)	90163-TZ3-A00	1
Flange Bolt (10 mm x 45 mm)	90163-SZ3-000	3
Flange Bolt (12 mm x 33 mm)	90186-SDA-A00	2
Flange Bolt (12 mm x 45 mm)	90165-SDA-A00	2
Flange Bolt (12 mm x 45 mm)	90164-T2G-A01	1
Flange Bolt (14 mm x 135 mm)	90176-SDA-A00	4
Bolt-Washer (8 mm x 16 mm)	90101-SWA-A00	2
Exhaust Pipe Gasket (ISHINO)	18212-SA7-003	2
Pre-Chamber Gasket	18393-SDB-A00	1

Flange Nut (12 mm)	90371-SEF-000	4
Castle Nut (14 mm)	90363-S3V-A01	2
Self-Lock Nut (10 mm)	90212-SA5-003	9
Spindle Nut	90305-S3V-A11	2
Split Pin (3.0 mm x 22 mm)	94201-30220	2
Set Ring (32 mm x 2.2 mm)	44319-STX-A60	1
Snap Ring (32 mm x 2.2 mm)	44319-STX-A01	1

**For SH-AWD, also add the following:**

Part Name	Part Number	Quantity
12-Point Bolt (8 mm x 21 mm)	90113-S10-000	8
Bolt-Washer (10 mm x 30 mm)	90382-SZA-003	2
Shaft Ring Seal Kit (SH-AWD)	06235-5L9-000	1

**Required Material**

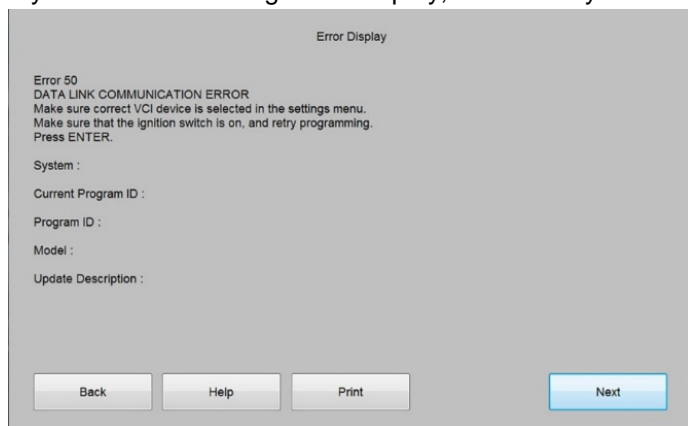
Part Name	Part Number	Quantity
Acura Long Life Antifreeze/Coolant Type 2	OL999-9011A	1.9L (64 fl oz.)

**Repair Procedure**

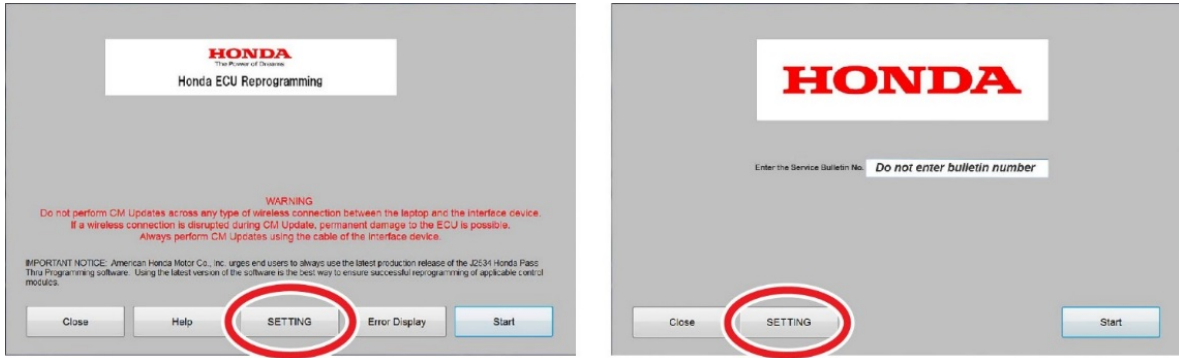
1. Replace the transmission; refer to service information.

**NOTE:**

- You can't update the vehicle using the MVCI as a standalone tool.
- **Do not** use the MongoosePro VCI tool.
- Make sure the 12 volt battery is fully charged before starting an update.
- Connect a fully charged jumper battery to the vehicle and leave it connected during the entire procedure to maintain steady voltage.
- Never turn the ignition to OFF or ACCESSORY during the update. If there is a problem with the update, leave the ignition turned to ON.
- To prevent transmission control unit damage, do not operate anything electrical (headlights, audio system, brakes, A/C, power windows, door locks, etc.) during the update.
- If you see the following Error Display, check that you are using the correct tool (MVCI or DST-i) with the i-HDS.

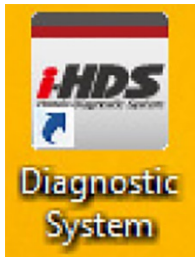


To change this, click on either of the SETTING selection buttons at the bottom of the J2534 initial screens as shown.

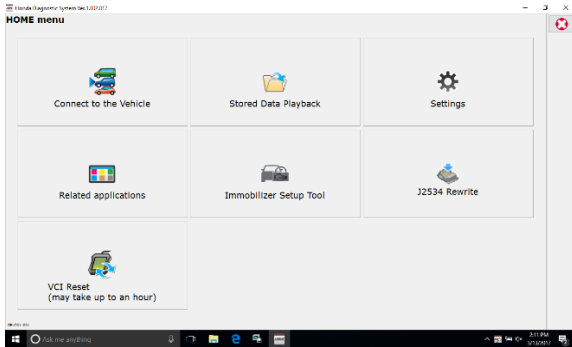


2. Make sure the parking brake is applied and the headlights are off.
3. Update the TCM software by selecting the i-HDS Diagnostic System icon. Refer to Service Bulletin 01-026, *Updating Control Units/ Modules*.

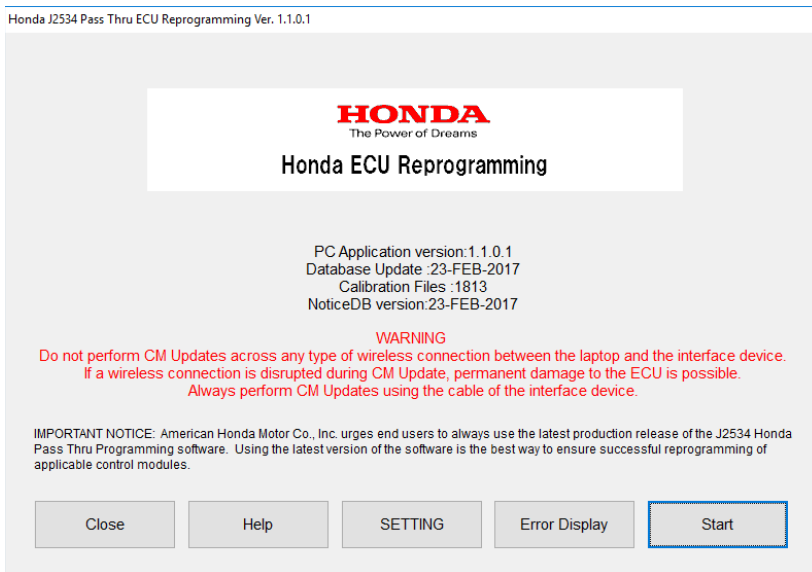
NOTE: **Do not use the Rewrite icon** on your desktop.



4. Select **J2534 Rewrite**.



5. Confirm the software is the same **or later** as listed in SOFTWARE INFORMATION.



6. Select **Start**, then follow the screen prompts.

NOTE:

- **Don't enter a bulletin number.**



7. Clear all DTCs.
8. Do the PCM idle learn procedure.

NOTE: Before beginning the repair, make sure that the i-HDS is up to date.