

August 27, 2014

BTB 52221 (1408)

Rear Side Body Plug Is Missing

AFFECTED VEHICLES

Year	Model	Trim	VIN Range
2010–13	MDX	ALL	ALL

SYMPTOM

The vehicle is missing one or both rear side body plugs.

POSSIBLE CAUSES

The rear side body plug flange does not sufficiently hold the plug.

CORRECTIVE ACTION

Replace both rear side body plugs, and secure them with the provided tape.

PARTS INFORMATION

Part Name	Part Number	Quantity
Rear Side Body Plug Kit (includes one rear body side plug and two pieces of tape)	74514-STX-305	2

WARRANTY CLAIM INFORMATION

The normal warranty applies.

Operation Number	Description	Flat Rate Time	Template ID	Failed Part Number
8231U1	Replace and tape the rear side body plugs onto both sides the vehicle.	0.6 hour	14-032N	74514-STX-A00

Defect Code: 07408

Symptom Code: 06005

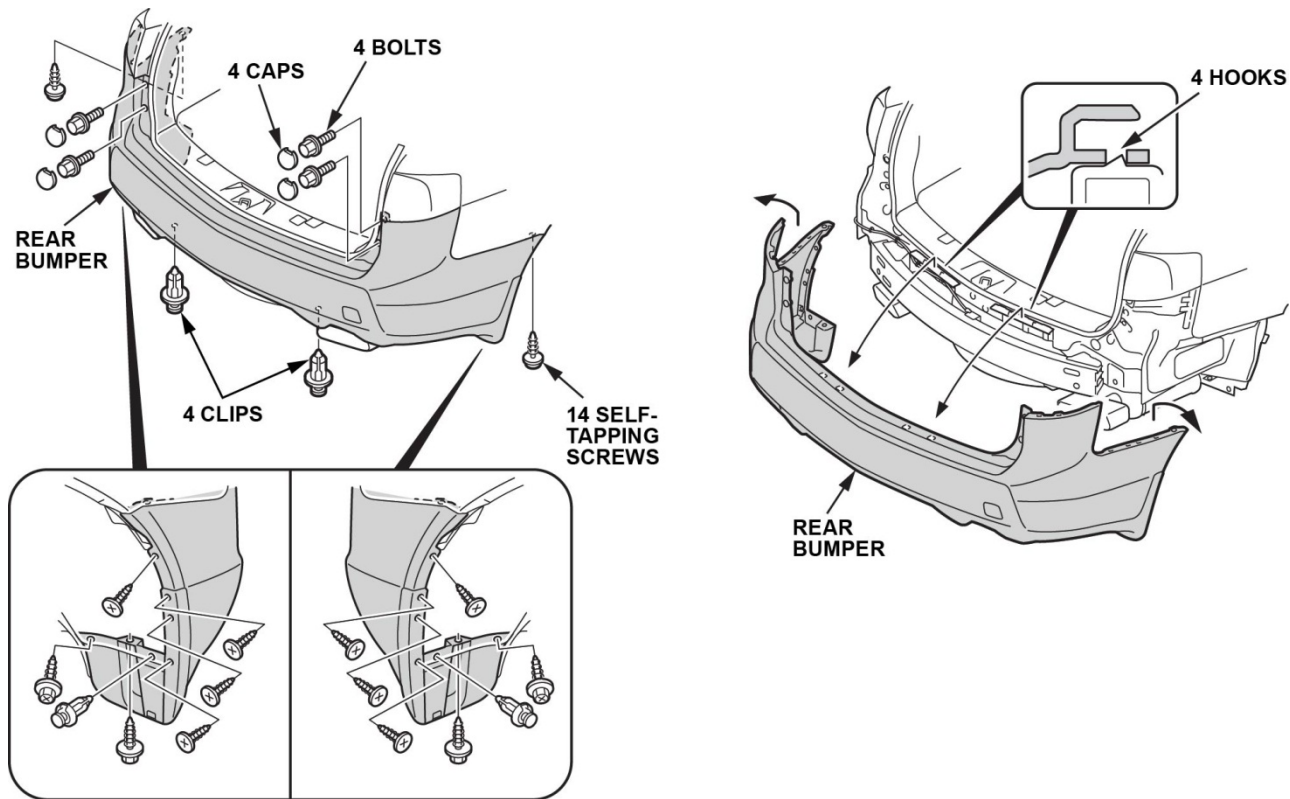
Skill Level: Repair Technician

CLIENT INFORMATION: The information in this bulletin is intended for use only by skilled technicians who have the proper tools, equipment, and training to correctly and safely maintain your vehicle. These procedures should not be attempted by “do-it-yourselfers,” and you should not assume this bulletin applies to your vehicle, or that your vehicle has the condition described. To determine whether this information applies, contact an authorized Acura automobile dealer.

REPAIR PROCEDURE

NOTE: Replace both rear side body plugs even if only one is missing.

1. With the help of an assistant, remove the rear bumper.



2. Clean the area around the rear side body plug opening with isopropyl alcohol.

Non-BSI Vehicle

REAR SIDE BODY PLUG OPENING
Clean the area thoroughly.

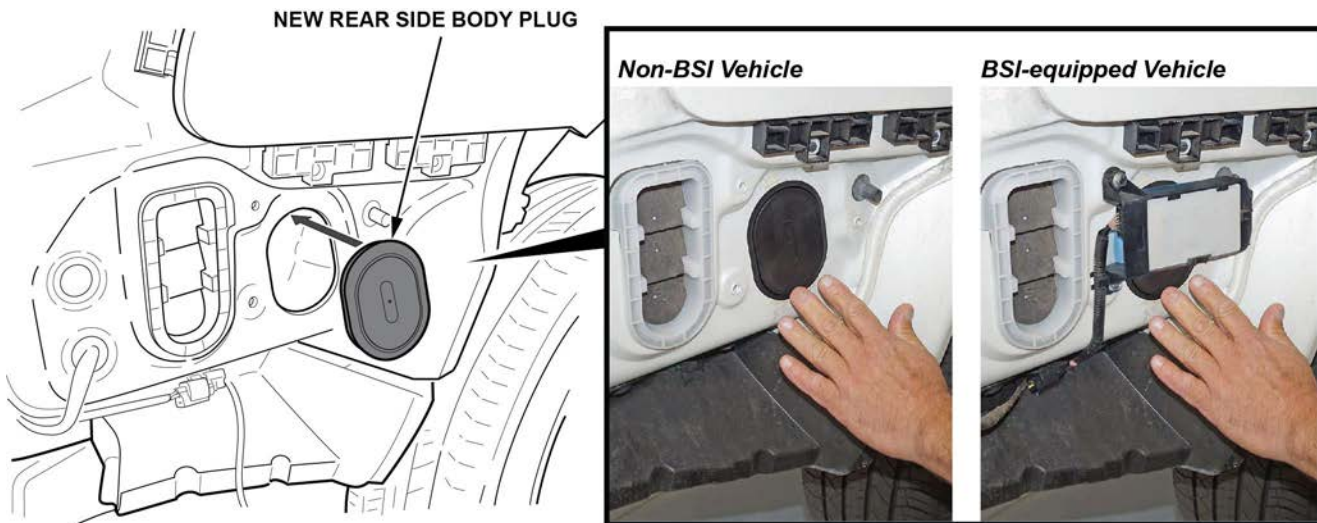


BSI-equipped Vehicle

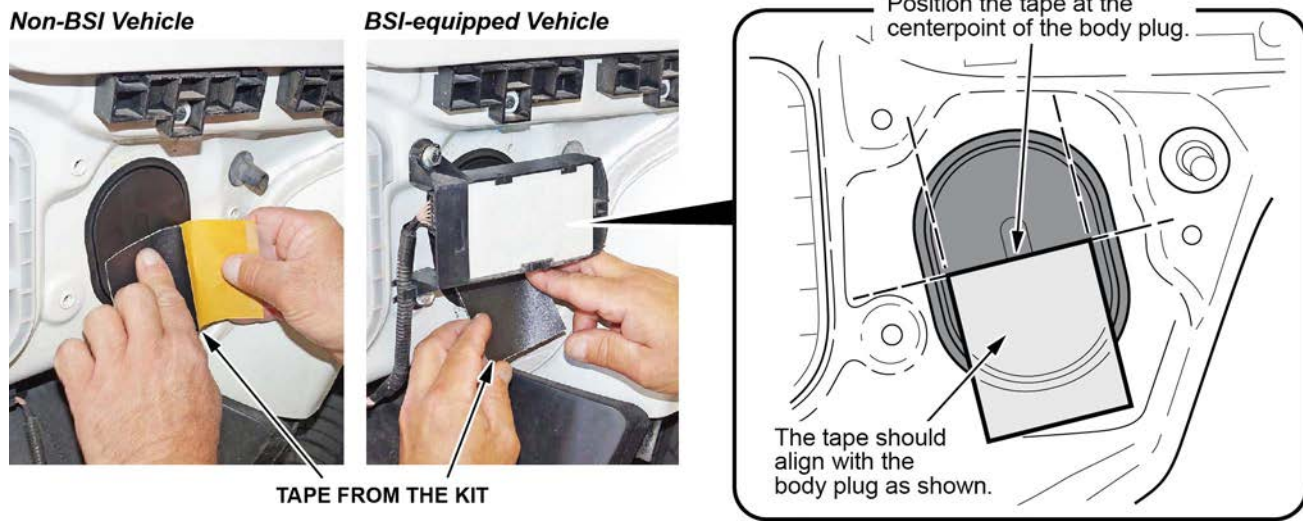
On models equipped with the Blind Spot Indicator System (BSI): The new body plug and tape can be applied without removing the BSI radar unit.



3. Install the new rear side body plug from the kit.



4. Apply a piece of tape from the kit as shown.

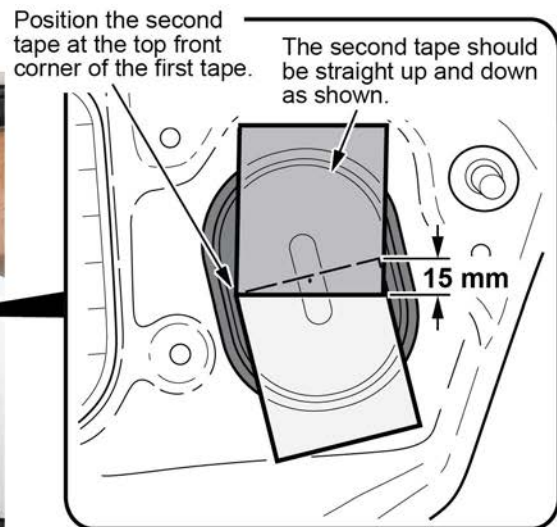


5. Apply the second piece of tape as shown, and make sure that the tape overlaps about 15 mm.

Non-BSI Vehicle



BSI-equipped Vehicle



SECOND PIECE OF TAPE FROM THE KIT

6. Press the tape down to ensure good adhesion.

Non-BSI Vehicle



BSI-equipped Vehicle



7. Repeat steps 2 through 6 on other side of the vehicle.
8. Reinstall the rear bumper.

END