



Applies To: **2001-03 3.2 CL** – ALL  
**2001-03 MDX** – ALL  
**2004 MDX** – From VIN 2HNYD1...4H500001 thru 2HNYD1...4H557556  
**2000-03 3.2 TL** – ALL

June 10, 2006

## Idle Vibration or Harsh Shifting

### SYMPTOM

There is a vibration at idle or harsh engagement when shifting the transmission between Park, Drive, and Reverse.

### PROBABLE CAUSE

The front hydraulic engine mount may have deteriorated and torn.

### PARTS INFORMATION

Front Engine Mount Assembly:

- 2001-03 3.2 CL*–  
P/N 50800-S0K-A82
- 2001-02 MDX*–  
P/N 50800-S3V-A82
- 2003-04 MDX*–  
P/N 50800-S3V-A03
- 1999 3.2 TL*–  
P/N 50810-S87-A82
- 2000-03 3.2 TL*–  
P/N 50800-S0K-A82

### WARRANTY CLAIM INFORMATION

**In warranty:** The normal warranty applies.

OP#	Description	FRT
112102	CL, MDX, and 3.2 TL - Replace front engine mount.	1.5

Failed Part: P/N 50800-S0K-A81  
 Defect Code: 01801  
 Symptom Code: 04501  
 Skill Level: Repair Technician

**Out of warranty:** Any repair performed after warranty expiration may be eligible for goodwill consideration by the District Parts and Service Manager or your Zone Office. You must request consideration, and get a decision, before starting work.

### DIAGNOSIS

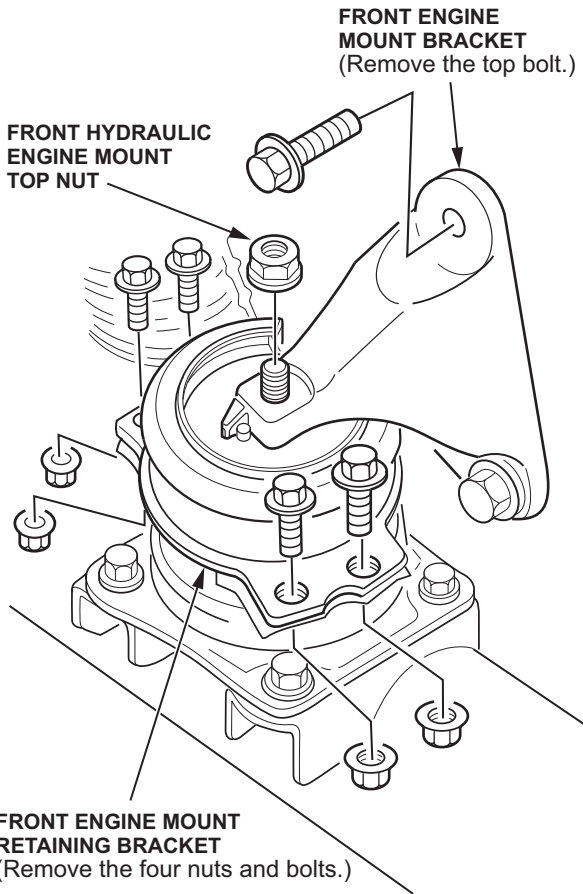
1. Bring the engine up to operating temperature, and fully apply the parking brake.
2. *For manual-transmission-equipped vehicles:*  
 Have an assistant stand to the side of the engine compartment to watch the top of the front engine mount. With the engine running at 2,000 RPM, slowly engage the clutch. Your assistant should be looking for contact between the top of the engine mount and the bottom of the engine mount bracket, and listening for noise from that area.  
*For automatic-transmission-equipped vehicles:*  
 Have an assistant stand to the side of the engine compartment within view of the top of the front engine mount. Shift the transmission to Drive. With your foot firmly on the brake pedal, quickly depress the accelerator pedal and release it. Your assistant should be looking for contact between the top of the engine mount and the bottom of the engine mount bracket, and listening for noise from that area.
3. If there is contact and/or noise, go to REPAIR PROCEDURE.



**CLIENT INFORMATION:** The information in this bulletin is intended for use only by skilled technicians who have the proper tools, equipment, and training to correctly and safely maintain your vehicle. These procedures should not be attempted by “do-it-yourselfers,” and you should not assume this bulletin applies to your vehicle, or that your vehicle has the condition described. To determine whether this information applies, contact an authorized Acura automobile dealer.

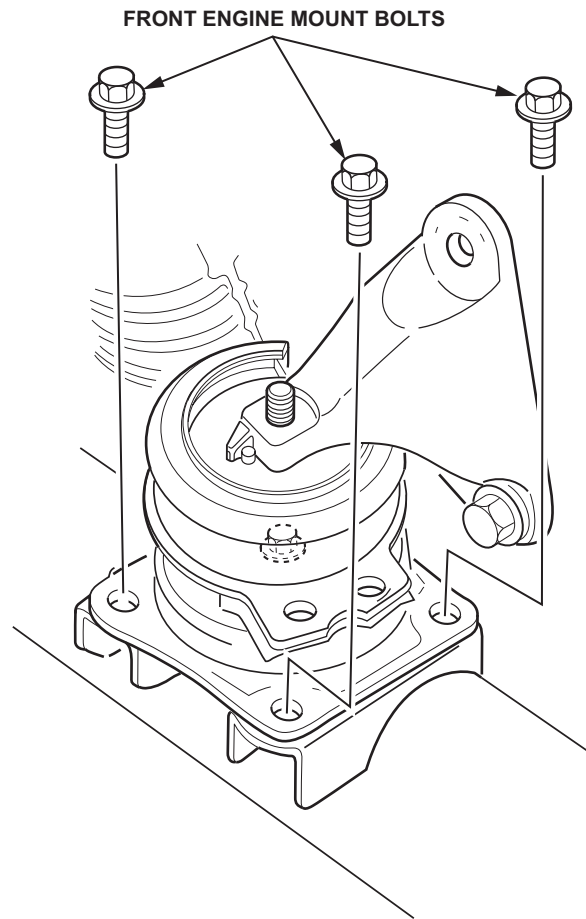
## REPAIR PROCEDURE

1. Place the vehicle on a lift, but do not raise it.
2. Remove the top nut from the front hydraulic engine mount.

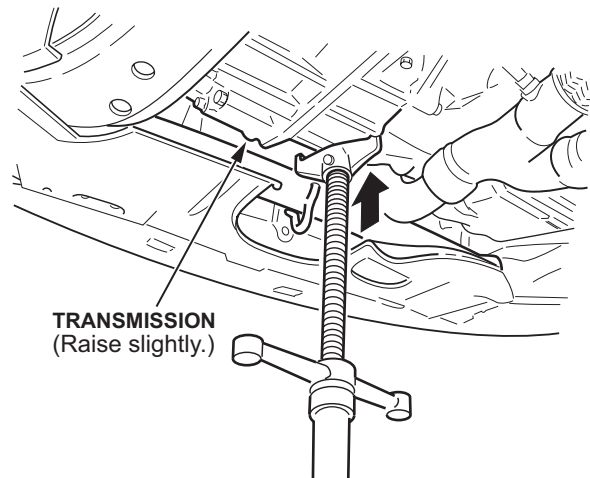


3. Remove the top bolt from the front engine mount bracket.
4. Remove the four nuts and bolts that secure the front engine mount retaining bracket.

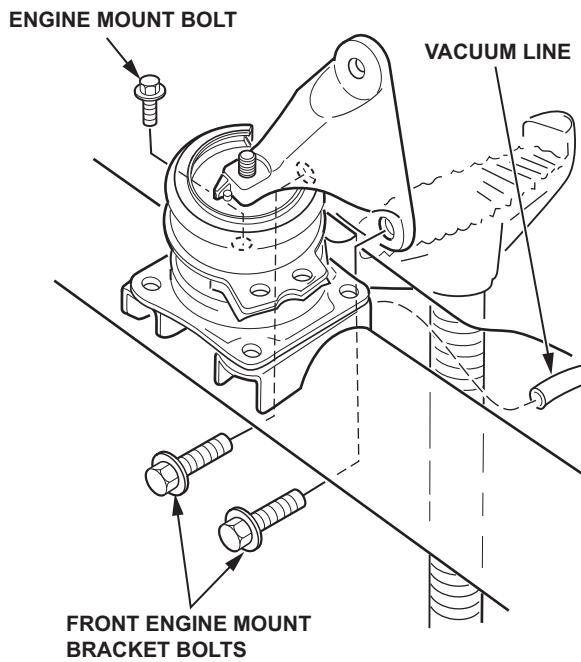
5. Remove the three accessible bolts holding the engine mount to the subframe.



6. Raise the vehicle. Place a screw jack under the transmission next to the engine and raise the transmission slightly.

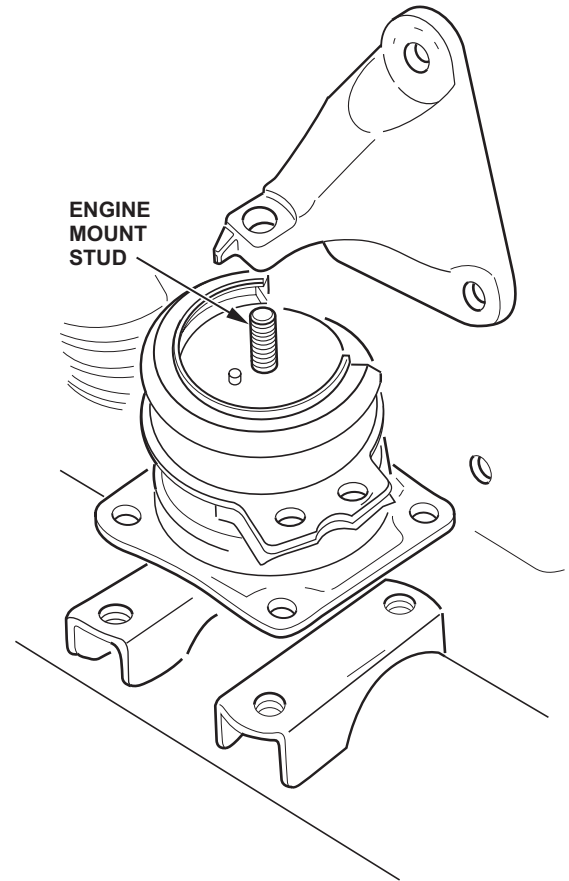


7. Remove the two remaining front bracket bolts.



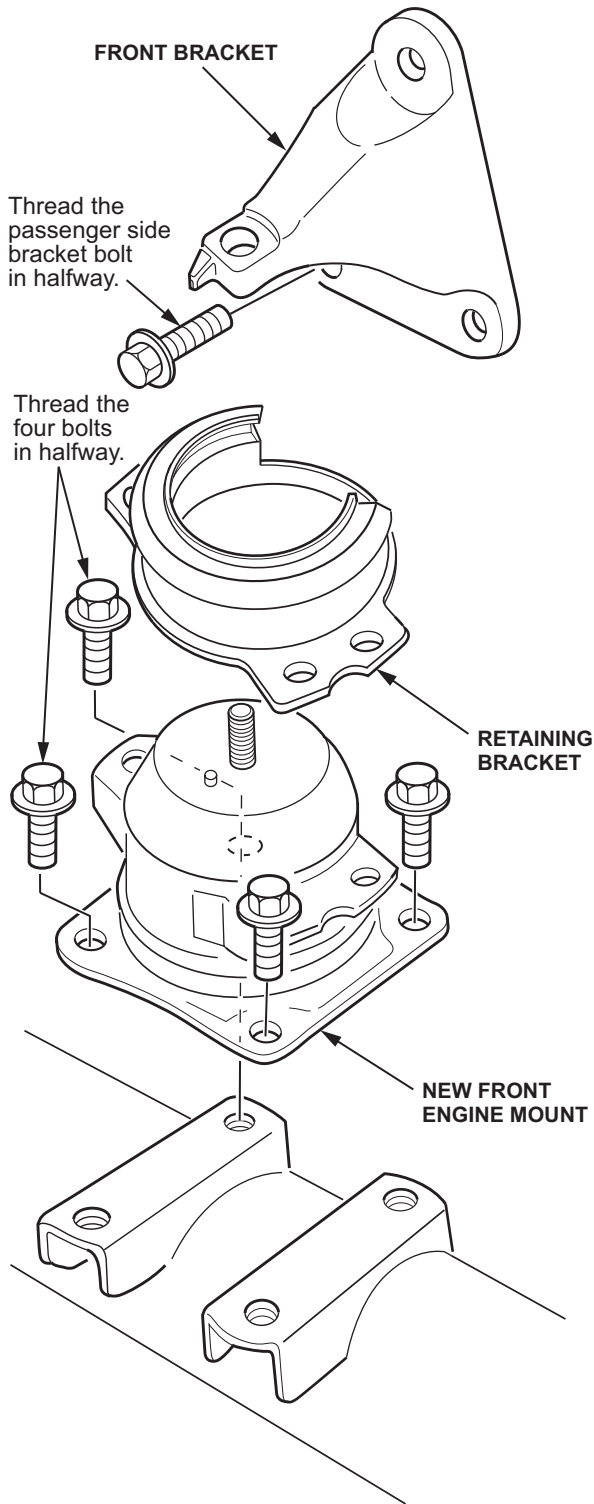
8. Disconnect the engine mount vacuum line, and remove the last engine mount bolt.
9. Lower and remove the screw jack, then lower the vehicle.

10. Place a floor jack where the screw jack was, and raise the transmission until the bracket clears the engine mount stud.



11. Remove the front bracket and the engine mount.

12. Remove the four nuts and bolts holding the retaining bracket to the new engine mount, and remove the retaining bracket.
13. Position the engine mount on the subframe. Install the engine mount bolts loosely.
14. Install the retaining bracket on the engine mount.



15. Install the front bracket and the passenger-side bracket bolt, threading it halfway in.

16. Torque all four engine mount bolts to **34 N·m (25 lb-ft)**.
17. Reconnect the vacuum line.
18. Lower the transmission, and remove the floor jack. Install the four retaining bracket nuts and bolts, and torque them to **22 N·m (16 lb-ft)**.
19. Install the remaining two bolts to the front bracket, and torque them to **38 N·m (28 lb-ft)**.
20. Install and torque the top engine mount nut to **54 N·m (40 lb-ft)**.