



NUMBER: 23-021-15

GROUP: Body

DATE: May 28, 2015

This bulletin is supplied as technical information only and is not an authorization for repair. No part of this publication may be reproduced, stored in a retrieval system, or transmitted, in any form or by any means, electronic, mechanical, photocopying, or otherwise, without written permission of FCA US LLC.

SUBJECT:

Squeak Noise Coming From The Rear Seat

OVERVIEW:

This bulletin involves applying tape to the rear seat track J-rail.

MODELS:

2014 - 2015 (KL) Jeep Cherokee

NOTE: This bulletin applies to vehicles built on or before April 23, 2015 (MDH 0423XX).

SYMPTOM/CONDITION:

The customer may describe a squeak noise coming from the rear seat, typically when the seat is unoccupied.

The noise may be caused by metal to metal contact of the rear seat track J-rail.

DIAGNOSIS:

If the customer describes the symptom/condition listed above, perform the Repair Procedure.

PARTS REQUIRED:

Qty.	Part No.	Description
1	05019054AA	TAPE

NOTE: Each package of tape will service 24 vehicles.

REPAIR PROCEDURE:

NOTE: Do NOT move the rear seat position prior to diagnosis or symptom/condition may disappear.

1. Verify the squeak noise by striking the middle of the seat back with the palm of a hand.
2. Is a squeak noise coming from the rear seat?
 - a. YES>>> Continue to [Step #3](#).
 - b. NO>>> This Bulletin does not apply. Normal diagnosis should be performed.

3. If the squeak noise was heard, move the 60 percent side rear seat track forward 1 or 2 positions and reverify the squeak noise by striking the middle of the seat back with the palm of a hand.
4. Was the squeak noise eliminated by moving the seat forward?
 - a. YES>>> Continue with the Repair Procedure [Step #5](#).
 - b. NO>>> This Bulletin does not apply. Normal diagnosis should be performed.

WARNING:To avoid serious or fatal injury on vehicles equipped with airbags, disable the Supplemental Restraint System (SRS) before attempting any steering wheel, steering column, airbag, Occupant Classification System (OCS), seat belt tensioner, impact sensor or instrument panel component diagnosis or service. Disconnect and isolate the battery negative (ground) cable, then wait two minutes for the system capacitor to discharge before performing further diagnosis or service. This is the only sure way to disable the SRS. Failure to follow these instructions may result in accidental airbag deployment.

5. Disconnect and isolate the negative battery cable. If equipped with an Intelligent Battery Sensor (IBS), disconnect the IBS connector first before disconnecting the negative battery cable.
6. Disconnect the rear seat electrical connectors and remove the fasteners attaching the rear seat to the vehicle. **DO NOT REMOVE THE SEAT FROM THE VEHICLE.** Refer to the detailed service procedures available in DealerCONNECT> TechCONNECT under: Service Info> 23 - Body> Seats, Rear> SEAT, Rear> Removal.
7. With the seat back folded down and seat track in the full rearward position, lift the seat off the rear studs and flip 90 degrees so that the bottom of the seat is exposed ([Fig. 1](#)).

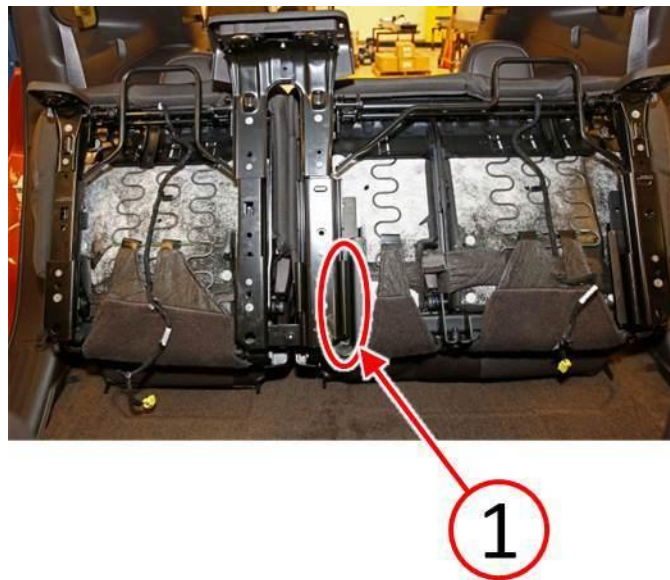


Fig. 1 Rear Seat Unbolted And Repositioned In Vehicle

1 - Area Of Concern On 60 Percent Side

-
8. Examine the rearward portion of the 60 percent side inner seat track for a “V” shaped gap with a touch condition at the rear lower edge of the seat track ([Fig. 2](#)).

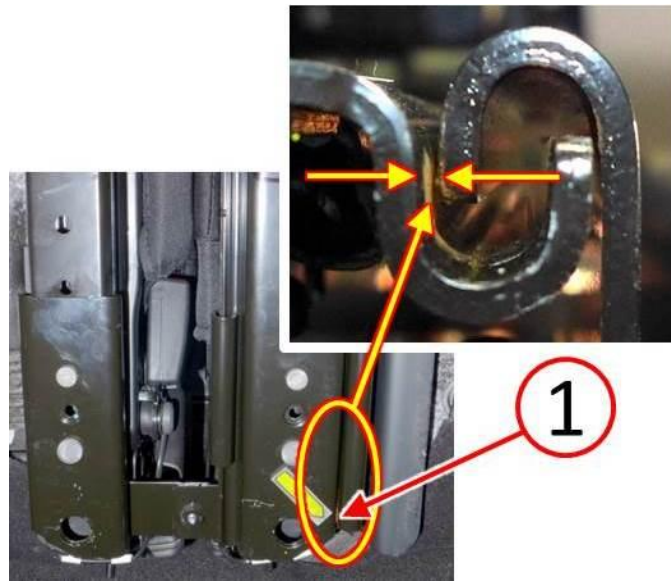


Fig. 2 Inspect Gap At The 60 Percent Inboard Side

1 - Touch Condition At Rear Lower Edge

9. If the seat track J-rail rear lower edge is touching, use a suitable tool (1) to reposition the seat track so that a 1.5 mm (0.06 in.) gap (2) is present between the J-rails (Fig. 3).

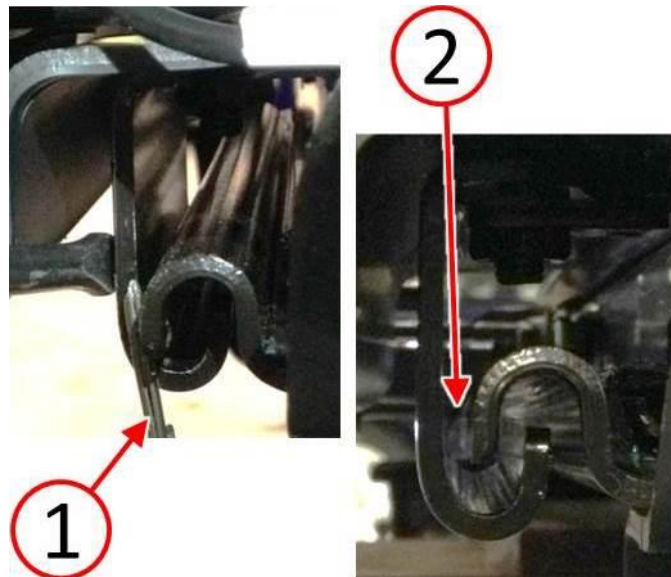


Fig. 3 Adjust 60 Percent J-Rail For Clearance

1 - Suitable Tool
2 - J-Rail Clearance

10. Move the seat track position so that the rear portion of the J-rail is visible.
11. Clean the J-rail (1) with isopropyl alcohol or equivalent (2), to remove any oil or grease residue from the area of the seat track to which the tape will be applied (Fig. 4).



Fig. 4 Clean J-Rail

- 1 - Seat Track J-Rail
- 2 - Clean With Isopropyl Alcohol

-
12. Cut the tape (1) in half (Fig. 5).

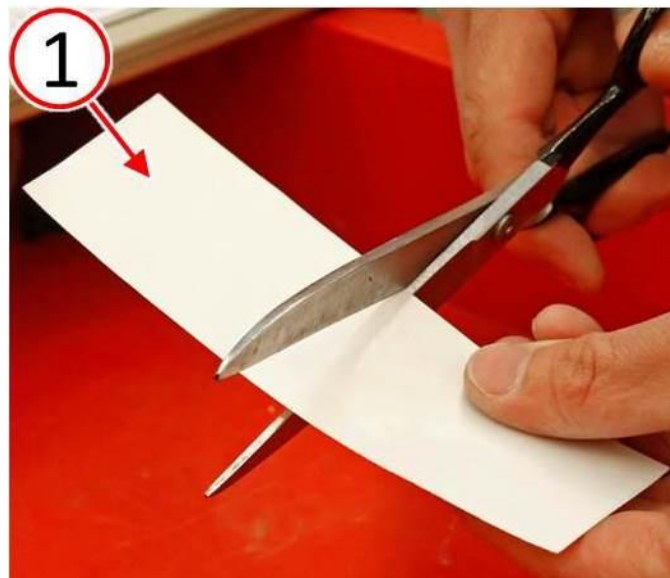


Fig. 5 Cut Tape In Half

- 1 - Tape
-

13. Apply the tape (2) to the lower inner J-rail, taking care not to apply the tape to the underside of the seat track area (1) where it will contact the body mount (Fig. 6).
14. Using fingers and a trim stick or equivalent, firmly press on the tape to ensure complete contact of tape to J-rail surface (3) without air gaps (Fig. 6).
15. Wrap the tape (4) over the J-rail and ensure the tape is fully adhered to the outer surface of the J-rail without air gaps (Fig. 6).

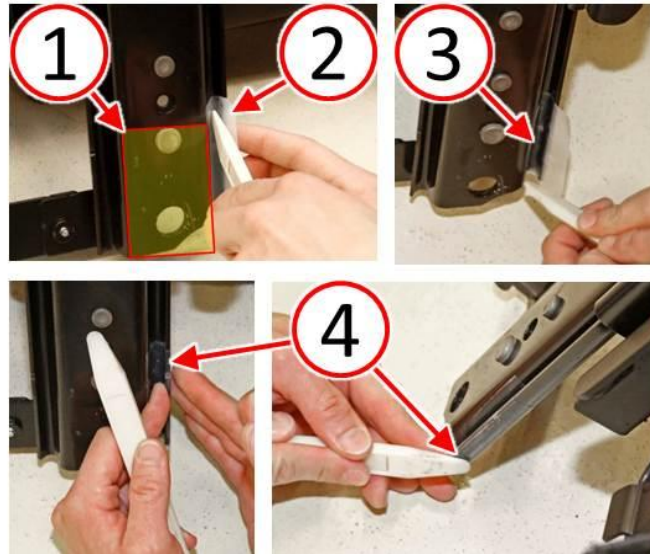


Fig. 6 Apply Tape To Inner J-Rail Rear Edge

- 1 - No Tape Zone On Underside Of Seat Track
- 2 - Apply Tape To Rear Edge Of Inner J-Rail
- 3 - Ensure Tape Is Fully Adhered In J-Rail Channel
- 4 - Wrap Tape over J-Rail And Adhere To J-Rail Side

-
16. Cycle the seat track a few times to ensure that the J-rail does not peel the tape away.
 17. Did the tape peel away?
 - a. YES>>> Further adjustment of the seat track is necessary. Continue with [Step #18](#).
 - b. NO>>> Seat may be reinstalled. Proceed to [Step #25](#).
 18. If further adjustment of the seat track is necessary, remove the rear seat from the vehicle.
 19. Remove the 60 percent side lower seat cushion (2) enough to expose the inboard side seat track fasteners (1) (Fig. 7). Refer to the detailed service procedures available in DealerCONNECT> TechCONNECT under: Service Info> 23 - Body> Seats, Rear> COVER, Seat Cushion> Removal.



Fig. 7 Access Seat Track Fasteners Under Seat Cushion

1 - Seat Track Fasteners

2 - 60 Percent Side Lower Seat Cushion

20. Loosen the 60 percent side inboard seat track fasteners (1) (Fig. 8).

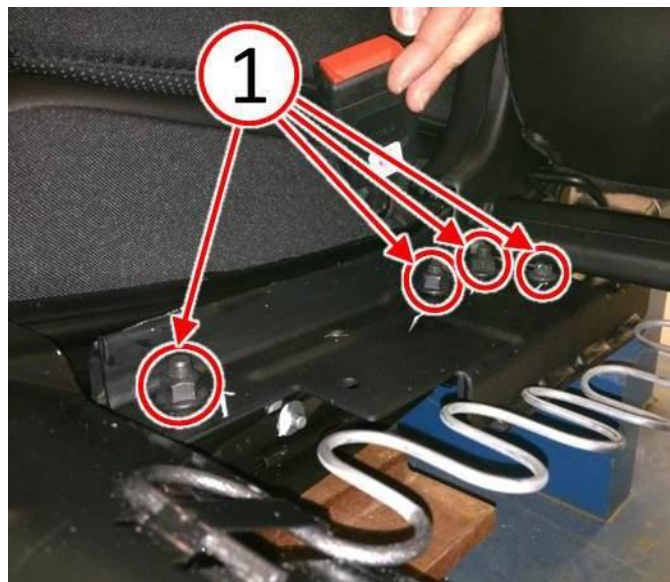


Fig. 8 Remove Seat Cushion To Access Seat Rail Fasteners

1 - Seat Track Fasteners

21. Adjust the seat track alignment (1) to ensure a minimum of 1.5 mm (0.06 in.) gap between the J-rails (2) at the rear of the seat track (Fig. 9).

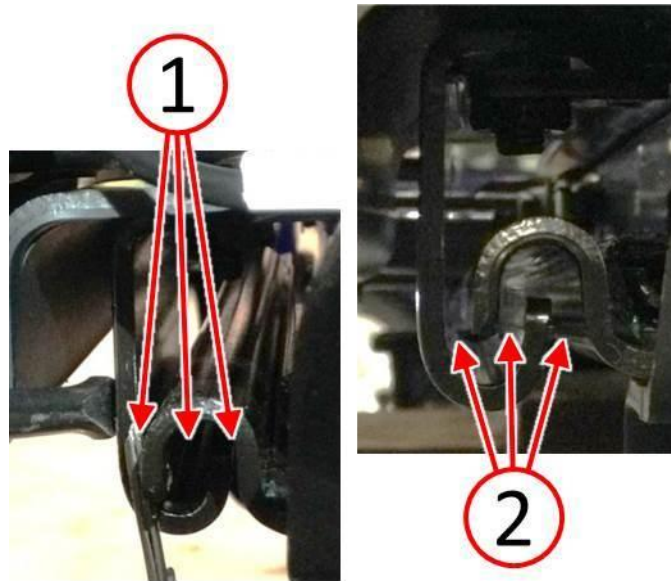


Fig. 9 Position 60 Percent Rail To Achieve Even Spacing

- 1 - J-Rail Gap Uneven
- 2 - J-Rail Gap Even

22. Tighten the three M10 nuts (1) to 50 N-m (37 ft. lbs.) and the one M8 bolt (2) to 25 N-m (18 ft. lbs.) (Fig. 10).

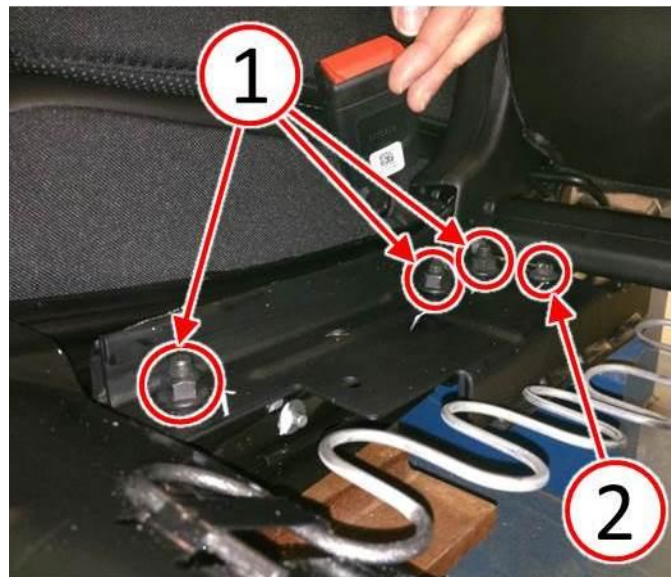


Fig. 10 Tighten Seat Rail Fasteners

- 1 - M10 Nuts
 - 2 - M8 Bolt
-

23. Repeat [Step #10](#) through [Step #16](#).
24. Install the seat 60 percent side lower seat cushion. Refer to the detailed service procedures available in DealerCONNECT> TechCONNECT under: Service Info> 23 - Body> Seats, Rear> COVER, Seat Cushion> Installation.
25. Install the rear seat to the vehicle following the detailed procedure in DealerCONNECT> TechCONNECT under: Service Info> 23 - Body> Seats, Rear> SEAT, Rear> Installation.
26. Connect the negative battery cable. If equipped with an Intelligent Battery Sensor (IBS), connect the IBS connector to the negative battery cable.

POLICY:

Reimbursable within the provisions of the warranty.

TIME ALLOWANCE:

Labor Operation No:	Description	Skill Category	Amount
23-13-35-94	Install Tape On Track (1 - Semi- Skilled)	6 - Electrical and Body Systems	0.5 Hrs.
23-13-35-95	Remove Seat Cushion To Adjust Track And Install Tape On Track (1 - Semi- Skilled)	6 - Electrical and Body Systems	1.0 Hrs.

FAILURE CODE:

ZZ	Service Action
----	----------------

PART REIMBURSEMENT DETAIL:

Part No:	Description
NPN	1/24 Of Tape Package

NOTE: This part number is for reimbursement only and will need to be claimed for 1/24 of Dealer Net of Part No. 05019054AA or it will be rejected.