



GROUP
Engine

MODEL
2014MY
Forte (YD) 1.6, Forte (YD) 2.0,
Optima (QF/TF) 2.0L, Optima
(QF/TF) 2.4, Optima Hybrid (TF
HEV), Soul (PS) 2.0

NUMBER
137 (Rev 2, 08/22/2014)

DATE
September 2013

TECHNICAL SERVICE BULLETIN

SUBJECT: DATA COLLECTION: EXTRACT CALIFORNIA EMISSIONS DATA
FROM ECU (DC005)

* NOTICE

This bulletin has been revised to include additional information. New/revised sections of this bulletin are indicated by a black bar in the margin area.

This bulletin provides information related to extracting “in use performance tracking” emissions data from the engine control unit (ECU) in certain vehicles sold in California. The California Air Resources Board (CARB) requires the emissions data from vehicles with a minimum of 3000 accumulated miles without reprogramming or resetting. To facilitate collection of this data at the dealer level, GDS screen shots will allow the capture of relevant parameters.

* NOTICE

IF THE VEHICLE MEETS THE CRITERIA BELOW, CALIFORNIA DEALERS MUST PERFORM THIS DATA COLLECTION ON VEHICLES WHENEVER AN AFFECTED VEHICLE IS IN THE SHOP FOR ANY MAINTENANCE OR REPAIR.

THIS DATA COLLECTION DOES NOT APPLY TO VEHICLES OR DEALERS OPERATING OUTSIDE OF CALIFORNIA.

For vehicles listed on DCS as requiring this procedure, follow the instructions in this bulletin after confirming that the following criteria are met:

- WebDCS shows this as an open Data Collection code DC005A → Q (depending on model) for the vehicle.

* NOTICE

Note that as sufficient data is collected, individual line items per model may be closed without updates to the TSB. Once a line item is closed on DCS, no further data collection is required. Data collections initiated after a line item is closed are subject to chargeback.

- Vehicle has more than 3000 miles on its odometer.

File Under: <Engine>

Circulate To: General Manager Service Manager Parts Manager

Service Advisor(s) Technician(s) Body Shop Manager Fleet Repair

SUBJECT: DATA COLLECTION: EXTRACT CALIFORNIA EMISSIONS DATA FROM ECU (DC005)

- Vehicle repair history does not show battery replacement/disconnection/reset or an ECU Update done in the last 3000 miles, because IUMPR (In Use Monitor Performance Ratio) data would have been cleared by such an event.
- Vehicle does not have a check engine light ON.

*** NOTICE**

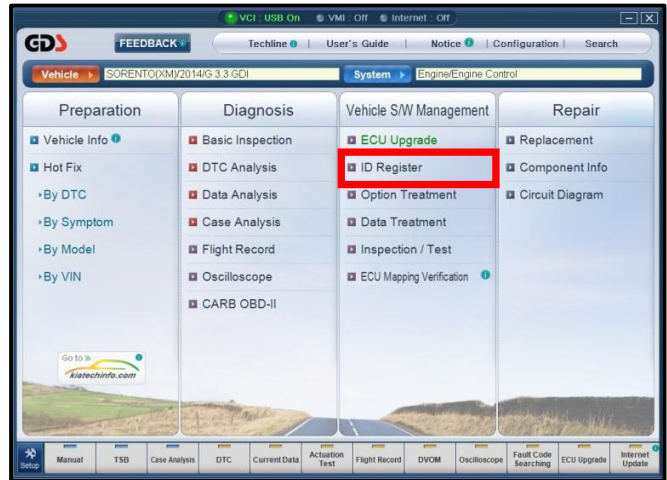
If vehicle meets above criteria, collect data prior to any other campaign or repair-related activities.

Service Procedure:

1. Open the engine compartment and locate the emission label under the hood. Locate and write down the “**Group**” number for later entry into the form.



2. To start, use the Global Diagnostic System (GDS). Begin by clicking on “**ID Register.**” Click on “**Auto VIN**” or manually enter vehicle information on the next screen.



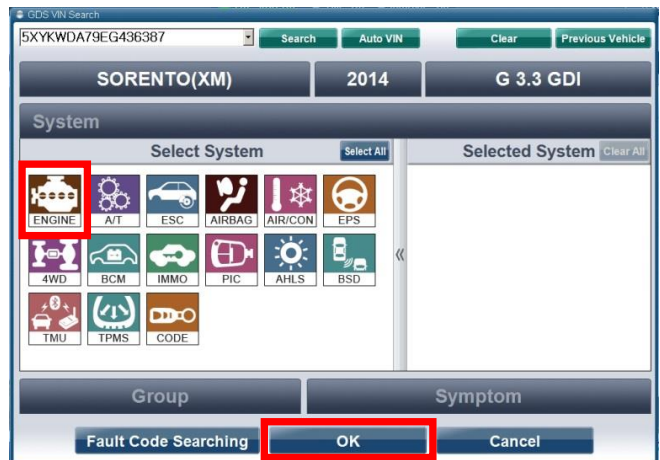
*** NOTICE**

GDS must be updated to version N-K-01-13-001 or later to properly collect data!

3. Choose “**Engine**” under “**Select System.**” Click “**OK**” and follow on screen instructions for connecting to vehicle.

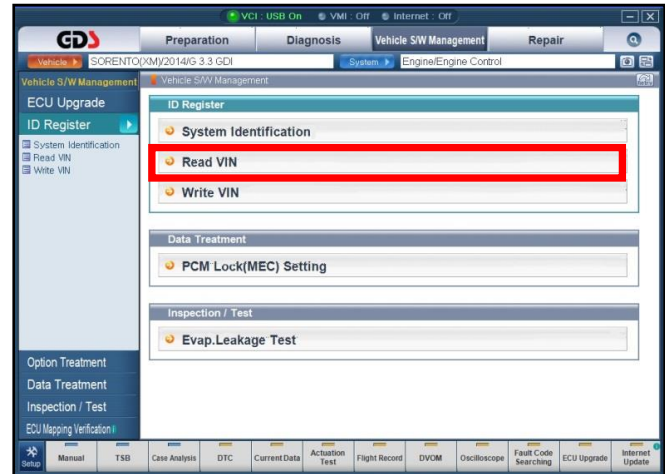
*** NOTICE**

Screens shown in this bulletin are for demonstration purposes only and will vary depending on the vehicle.

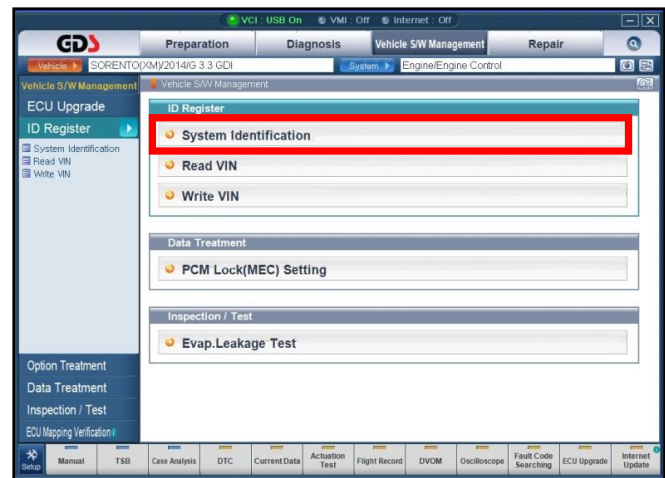


SUBJECT: DATA COLLECTION: EXTRACT CALIFORNIA EMISSIONS DATA FROM ECU (DC005)

4. To verify the VIN, select “**Read VIN**” under the “**Vehicle S/W Management**” menu. Click “**OK**” and write down the VIN for later entry into form.



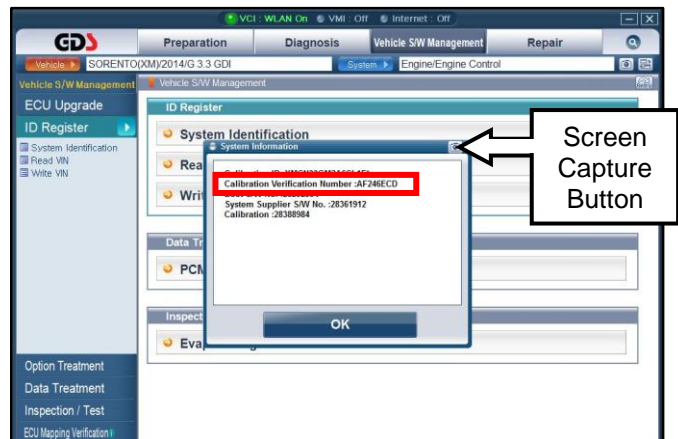
- 5a. Select “**System Identification**”.



- 5b. Do a screen capture of “Calibration ID” or “ROM ID” number for later form entry. Select “**Entire GDS Area**” and click “**Send to file**”. The GDS will set up a designation folder and file name to save the captured data. Please change the file name to include the model/engine, the last 6 digits of the VIN and the date (mmddyyyy). Before saving, write down the file name and designation folder for further reference.

Example: XM33L_437824_09202013

(Model & Eng.) (VIN) (mmddyyyy)



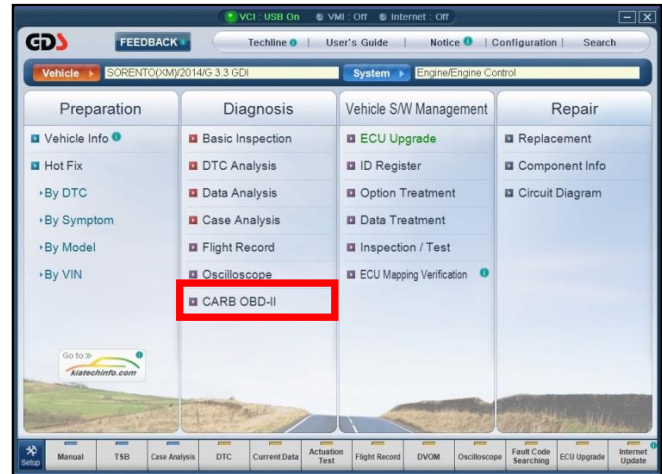
Next, go to the main screen by clicking on the “**GDS**” logo at the top left of the screen.

★ NOTICE

Before saving, write down the Calibration Verification Number for further reference.

SUBJECT: DATA COLLECTION: EXTRACT CALIFORNIA EMISSIONS DATA FROM ECU (DC005)

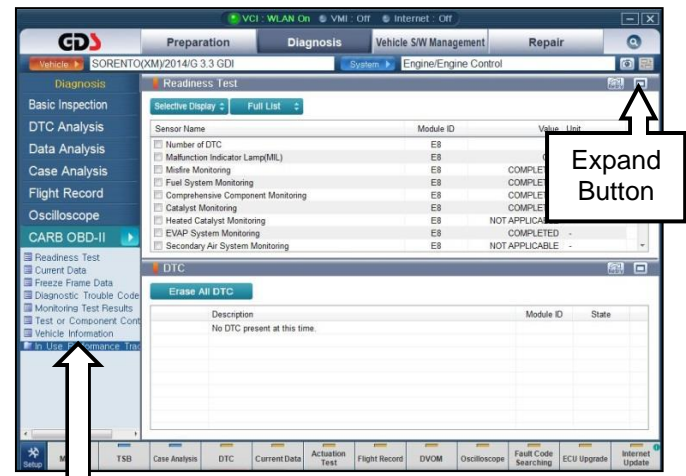
6. Then select “CARB OBD-II” under the “Diagnosis” tab.



7. Click on “IN-USE Performance Tracking” found in the CARB OBD-II list at the bottom left of the screen. Then click the “Expand” button at the top right corner of “IN-USE Performance Tracking” window.

*** NOTICE**

If all values indicate "Not Supported" or "0", check to make sure you have GDS software version N-K-01-13-001 or later. If the software version is correct, and all values show "Not Supported" or "0", the vehicle will not qualify for this data collection, as it may have received a recent ECM Update or battery replacement/reset of the data values.

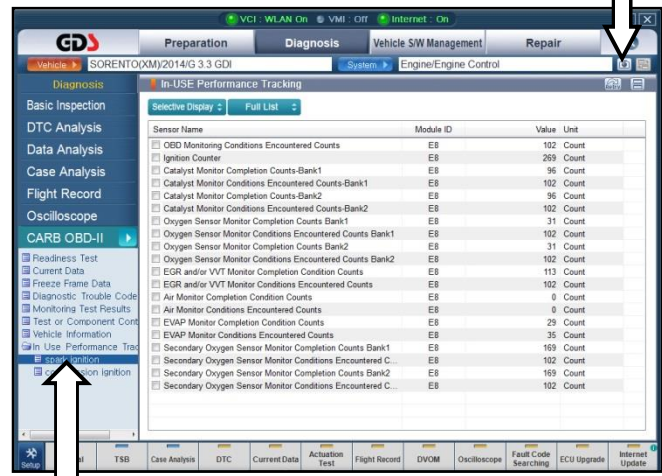


Only Select: “In Use Performance Tracking” for this screen capture.

8. Click on “spark ignition” and then capture the GDS data by clicking on the “Capture” button.

*** NOTICE**

Make sure you capture the entire screen, if only part of the list is displayed, first click “Expand” button, then proceed to capture the entire screen.



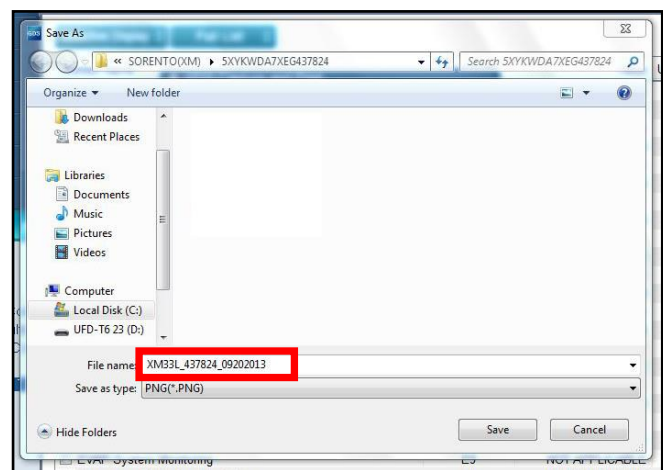
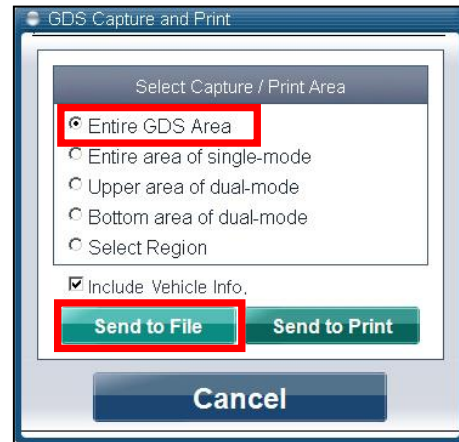
Select: “spark ignition”

SUBJECT: DATA COLLECTION: EXTRACT CALIFORNIA EMISSIONS DATA FROM ECU (DC005)

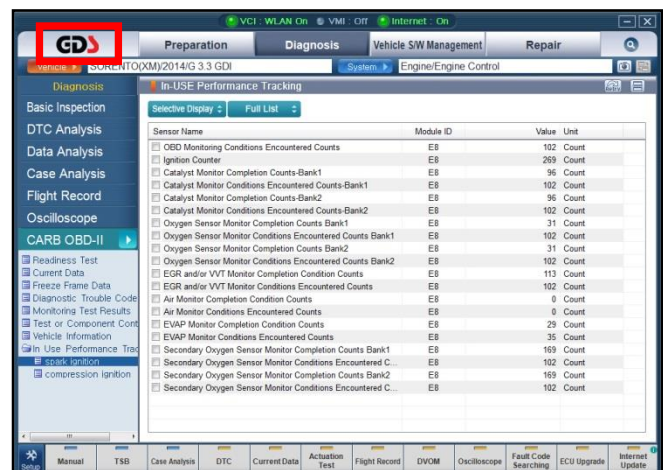
9. Select “Entire GDS Area” and click “Send to file.” The GDS will set up a designation folder and file name to save the captured data. Please change the file name to include the model/engine, the last 6 digits of the VIN and the date (mmddyyyy). Before saving, write down the file name and designation folder for further reference.

Example: XM33L_437824_09202013

↑ ↑ ↑
(Model & Eng.) (VIN) (mmddyyyy)

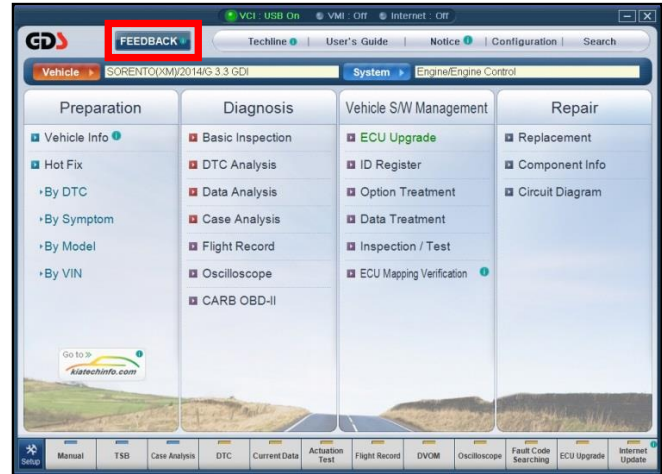


10. After saving the file, return to the GDS home page by clicking on “GDS” logo in the upper left hand corner.



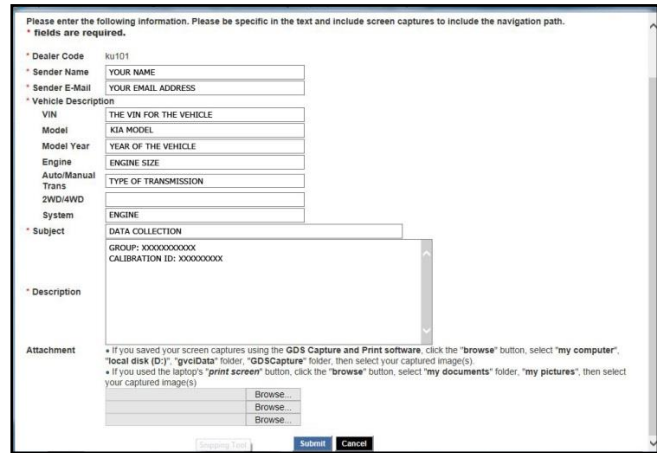
SUBJECT: DATA COLLECTION: EXTRACT CALIFORNIA EMISSIONS DATA FROM ECU (DC005)

11. Then click on the **“Feedback”** button.



12. Enter all the information requested in the form including your name and email address.

- For System, enter **“Engine.”**
- For Subject, enter **“Data Collection.”**
- In the Description area,
 - Type **“Group:”** followed by the group number from the Vehicle Emission Control Information label in step 1.
 - Type **“Calibration ID:”** followed by the calibration ID obtained in step 5b.
 - Add current odometer mileage.
 - Add RO#.



*** NOTICE**

Please check to ensure both group and Cal ID numbers are correctly entered.

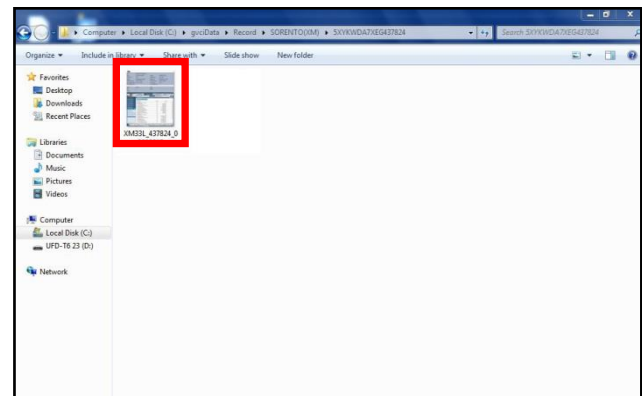
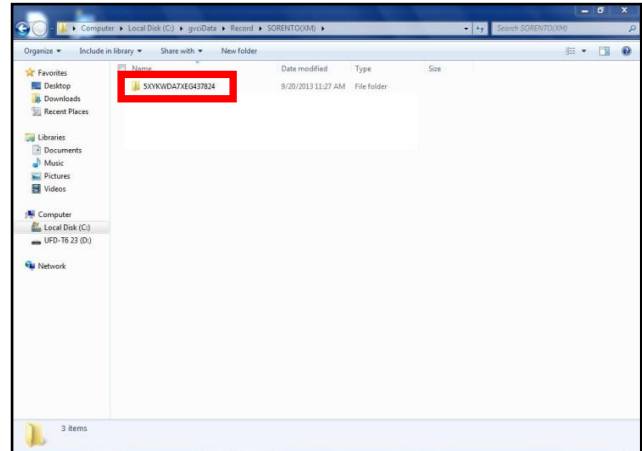
13. To attach the data to the feedback form, click on the **“Browse”** button.



SUBJECT: DATA COLLECTION: EXTRACT CALIFORNIA EMISSIONS DATA FROM ECU (DC005)

14. Refer to the file name and destination from step 9.

- Navigate to: **Local Disk (D:) / gvcData / Record /**
- Click on the folder for the vehicle *i.e.*, "**Sorento (XM).**"
- Click on the folder containing the vehicle VIN.
- Click on the file name.
- Once the file name appears in the "**File Name**" box, click on the "**Open**" button. Once file name appears in attachment field, repeat and attach screen capture of "**Calibration ID**" or "**ROM ID**" number from step 5b.



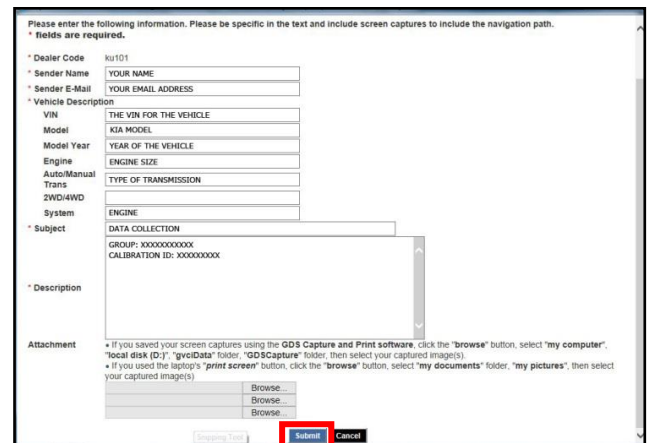
*** NOTICE**

Ensure that you attach the correct files by confirming they are the same as it is written down in step 5 & 9. Incorrect attachments render data submissions useless and are subject to a charge back of the warranty claim.

15. When the file name appears in the attachment field and all the information has been entered, click the "**Submit**" button.

*** NOTICE**

GDS must be connected to the internet to submit data.



16. Click on the "**Close**" button to finish.

*** NOTICE**

You may also print the data prior to submitting as record to attach to the RO.



SUBJECT: DATA COLLECTION: EXTRACT CALIFORNIA EMISSIONS DATA FROM ECU (DC005)

AFFECTED PRODUCTION RANGE:

Model	Production Range
Forte (YD) 2.0 (SULEV), Forte (YD) 1.6 (ULEV), Soul (PS) 2.0, Optima (QF/TF) 2.4 (ULEV & SULEV), Optima (QF/TF) 2.0, Sportage (SL) 2.4 (ULEV & SULEV), Sportage (SL) 2.0, Optima Hybrid (TF HEV).	2014MY

2014MY DATA COLLECTION WARRANTY CLAIM INFORMATION:

*** NOTICE**

As sufficient data is collected, individual line items per model may be closed without updates to the TSB. Once a line item is closed on DCS, no further data collection is required. Data collections initiated after a line item is closed are subject to chargeback.

To ensure proper claim processing, enter VIN in DCS and allow the system to auto populate claim fields.

Campaign ID	Claim Type	Causal P/N	Qty	N Code	C Code	Repair Description	Labor Op Code	Time	Replacement P/N	Qty
DC005A	V	100CA EM999	0	N99	C99	Extract ECU data: Forte 2.0L	14HCARQA	0.3 M/H	N/A	0
DC005B	V	100CA EM999	0	N99	C99	Extract ECU data: Forte 1.8L SULEV	14HCARQB	0.3 M/H	N/A	0
DC005C	V	100CA EM999	0	N99	C99	Extract ECU data: Forte 1.8L ULEV	14HCARQC	0.3 M/H	N/A	0
DC005D	V	100CA EM999	0	N99	C99	Extract ECU data: Sorento 2.4L	14HCARQD	0.3 M/H	N/A	0
DC005E	V	100CA EM999	0	N99	C99	Extract ECU data: Sorento 3.3L	14HCARQE	0.3 M/H	N/A	0
DC005F	V	100CA EM999	0	N99	C99	Extract ECU data: Sedona 3.5L	14HCARQF	0.3 M/H	N/A	0
DC005G	V	100CA EM999	0	N99	C99	Extract ECU data: Cadenza 3.3L	14HCARQG	0.3 M/H	N/A	0
DC005H	V	100CA EM999	0	N99	C99	Extract ECU data: Soul 2.0	14HCARQH	0.3 M/H	N/A	0
DC005I	V	100CA EM999	0	N99	C99	Extract ECU data: Forte 2.0 (SULEV)	14HCARQI	0.3 M/H	N/A	0
DC005J	V	100CA EM999	0	N99	C99	Extract ECU data: Forte 1.6 (ULEV)	14HCARQJ	0.3 M/H	N/A	0
DC005K	V	100CA EM999	0	N99	C99	Extract ECU data: Optima 2.0	14HCARQK	0.3 M/H	N/A	0
DC005L	V	100CA EM999	0	N99	C99	Extract ECU data: Sportage 2.0	14HCARQL	0.3 M/H	N/A	0
DC005M	V	100CA EM999	0	N99	C99	Extract ECU data: Optima 2.4 (ULEV)	14HCARQM	0.3 M/H	N/A	0

SUBJECT: DATA COLLECTION: EXTRACT CALIFORNIA EMISSIONS DATA FROM ECU (DC005)

DC005N	V	100CA EM999	0	N99	C99	Extract ECU data: Optima 2.4 (SULEV)	14HCARQN	0.3 M/H	N/A	0
DC005O	V	100CA EM999	0	N99	C99	Extract ECU data: Sportage 2.4 (ULEV)	14HCARQO	0.3 M/H	N/A	0
DC005P	V	100CA EM999	0	N99	C99	Extract ECU data: Sportage 2.4 (SULEV)	14HCARQP	0.3 M/H	N/A	0
DC005Q	V	100CA EM999	0	N99	C99	Extract ECU data: Optima Hybrid	14HCARQ	0.3 M/H	N/A	0

*** NOTICE**

VIN inquiry data for this repair is provided for tracking purposes only. Kia retailers should reference DC005 when accessing the WebDCS system.