



GROUP
Chassis

MODEL
Optima
(TF/QF/HEV)
2011/13MY

NUMBER
039

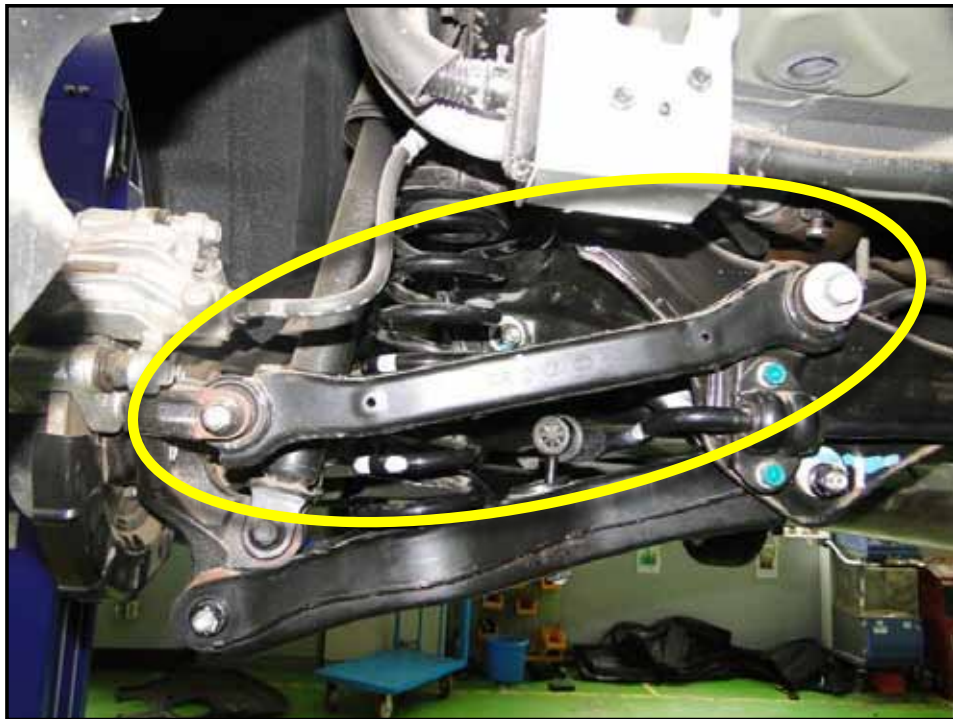
DATE
September 2012

TECHNICAL SERVICE BULLETIN

SUBJECT:

CAUTION DURING REAR UPPER ARM SERVICE

This bulletin provides cautionary information relating to the Optima when installing the rear upper arm to the subframe to prevent potential quality concerns regarding rear upper arm bolt. Without properly aligning the bolt holes of rear upper arm and subframe (horizontally), the bolt securing the rear upper arm to the subframe may become loose, and as a result, rust and noise concerns may occur later on.



File Under: <Chassis>

Circulate To: General Manager Service Manager Parts Manager
 Service Advisor(s) Technician(s) Body Shop Manager Fleet Repair

SUBJECT:

CAUTION DURING REAR UPPER ARM SERVICE

Caution During Rear Upper Arm Service:

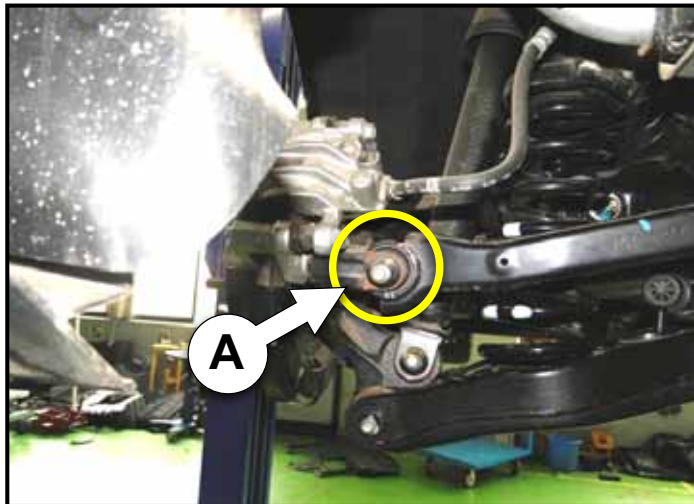
1. When installing the rear upper arm, first position it to the carrier/axle assembly (A) using a bolt.

Tightening Torque Specifications:

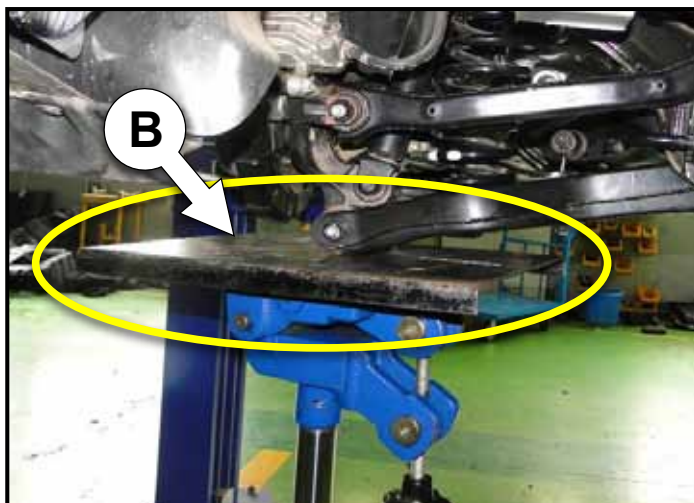
101.3~115.7 lb-ft (137.4~157.0 Nm)

*NOTICE

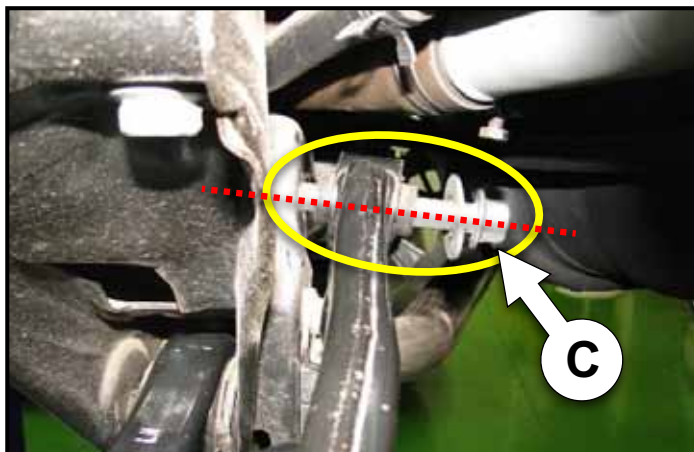
For detailed service procedure regarding the rear upper arm, refer to applicable Service Manual.



2. Before installing the rear upper arm to the subframe, support the end of rear lower arm (B) with a transmission jack and raise the jack until the bolt hole of rear upper arm is properly aligned with the subframe (horizontal axis line).



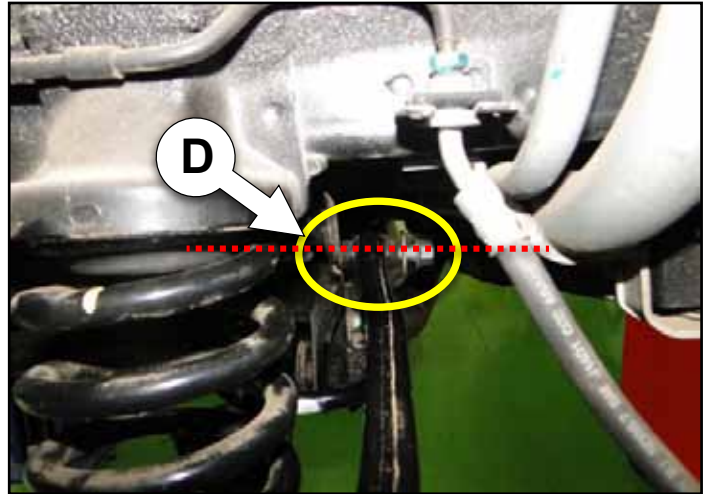
If the bolt is tightened without properly supporting the rear lower arm, the bolt to the subframe may be on a slanted axis (C) as shown in the photo on the right.



SUBJECT:

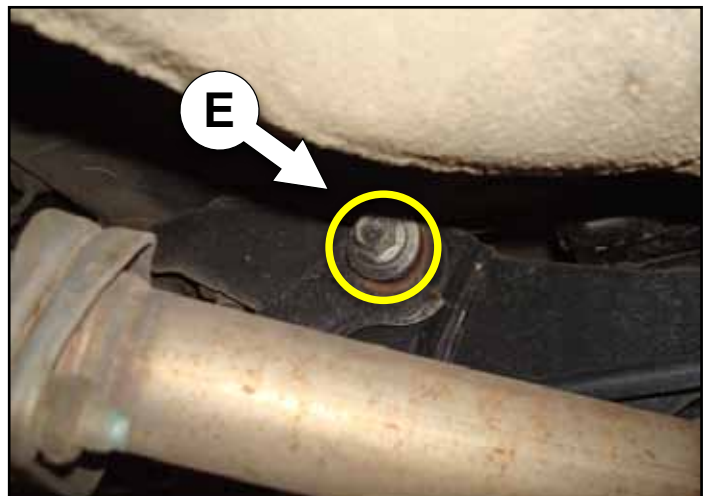
CAUTION DURING REAR UPPER ARM SERVICE

3. Ensure the bolt is positioned horizontally (D) when installing the rear upper arm to the subframe as indicated in the photo.



CAUTION

Tightening the bolt without properly aligning the bolt holes of rear upper arm and subframe (horizontally), the bolt (E) securing the rear upper arm to the subframe may become loose, and as a result, rust and noise concerns may occur later on.



4. The rear wheel alignment should be checked after performing this procedure.

AFFECTED VEHICLE PRODUCTION RANGE:

| Model | Production Date Range |
|--------------------|-----------------------|
| Optima (TF/QF/HEV) | 2011-2013 |