



To All Lamborghini Dealers and Licensed Service Point  
From Customer Service Department  
Subject Lie replacement  
Group 140.9.06  
Date 20.07.2007  
Pages 6

Automobili  
Lamborghini S.p.A.

**Subject**  
Lie replacement

### **Model / VIN-Range**

All Gallardo (Coupè and Spyder) from VIN G75500 to VIN G85814.

Attention: As not all cars from this VIN range are affected, please carefully check on the Lamborghini Web-portal to verify the VIN-Info and if the car is affected by this service campaign before the start of any activity.

### **Information to the field**

Due to a defective component in the LIE ECU is possible that, in case of high temperature in the passenger compartment the engine does not start.

### **Field solution**

In case you have an involved vehicle in the workshop Lamborghini recommends to replace the LIE.

This replacement must be performed on all cars involved at the next service.

Lamborghini recommends you to carry out this rework action to avoid future customer complain.



## Spare Parts

You have to order two engine ECU p/n: 410907557M

The order must be sent with the indication of the car VIN using RIG procedure (warranty parts ordering).

### Important:

The disassembled LIEs must be sent back to Automobili Lamborghini in the original packaging.

Return address:

Automobili Lamborghini S.p.A  
Via Modena 12  
40019 Sant'Agata Bolognese (BO)  
ITALY  
For attention: Davide Consoni

Parts must be returned via DHL  
Return shipment account:  
- from Italy 117080258  
- from Rest of the World 968124590

## Warranty Claim data

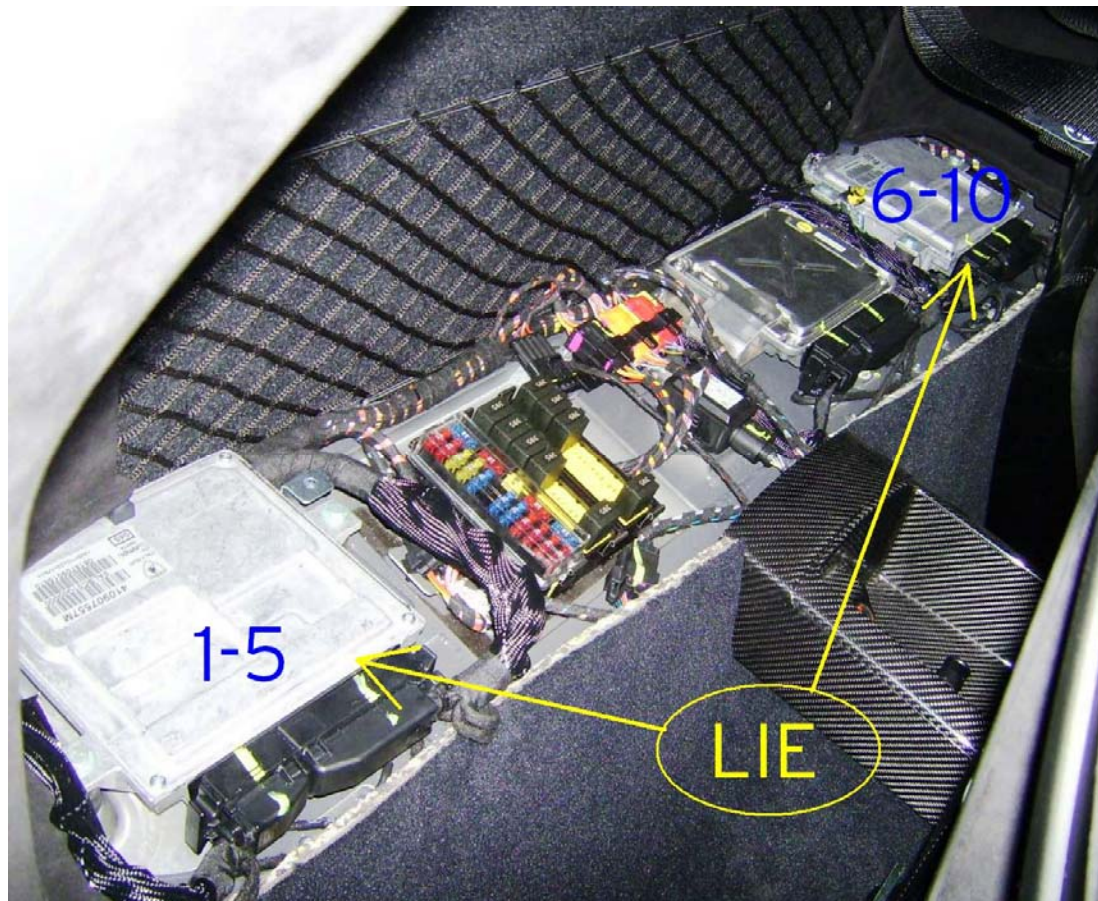
The warranty reimbursement request for this rework action will be managed by the following standard Warranty Claim procedure.

<b>Campaign Code:</b>	<b>L140-A.04.07 (Coupè) / L715-A.04.07 (Spyder)</b>
<b>Campaign Description:</b>	<b>Lie Replacement</b>
<b>Cost Code:</b>	<b>50</b>
<b>Component Code:</b>	<b>CCA0407</b>
<b>Trouble Code:</b>	<b>220</b>
<b>Labour Code:</b>	<b>CCA0407100</b>
<b>Labour Time:</b>	<b>1 h</b>

## Workshop instructions

- 1.1** Adopt all precautions to prevent car damages and to work safe.
- 1.2** Disassemble the rear bench and look at the Engine ECU as in picture 1.
- 1.3** Note:
  - in the Spyder vehicles the LIEs are behind the rear panel
  - if a Superleggera is equipped with tubular frame, you do not have to disassemble it.

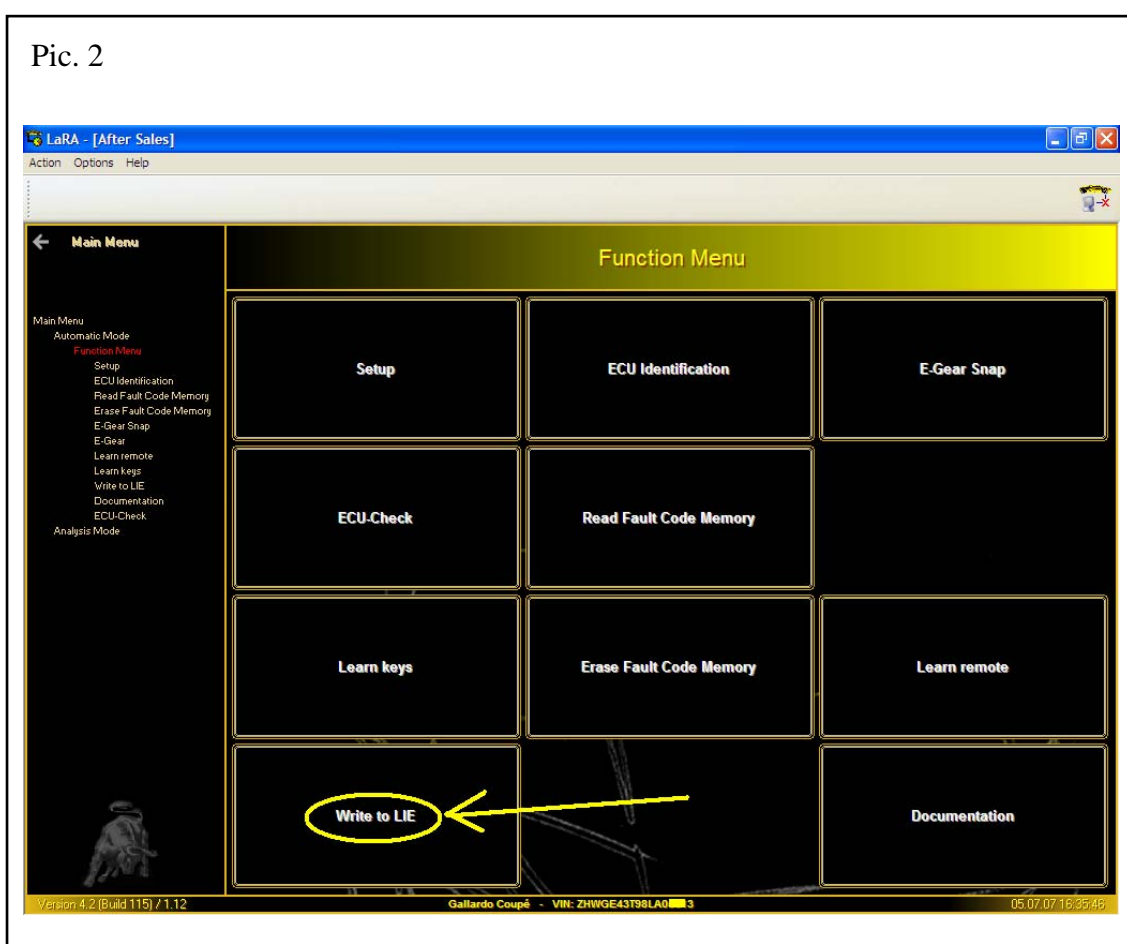
Pic. 1





- 1.4 Before starting the replacement you have to do an engine management data acquisition using LDAS in order to know the SW written on the LIEs.
- 1.5 Start LaRA Automatic mode and launch the “documentation” function on the car, then download the zip file using Download manager.
- 1.6 Replace the defective ECU and use the “Write to LIE” function in LaRA Automatic mode after downloading the zip file, as shown in picture 2 and 3.

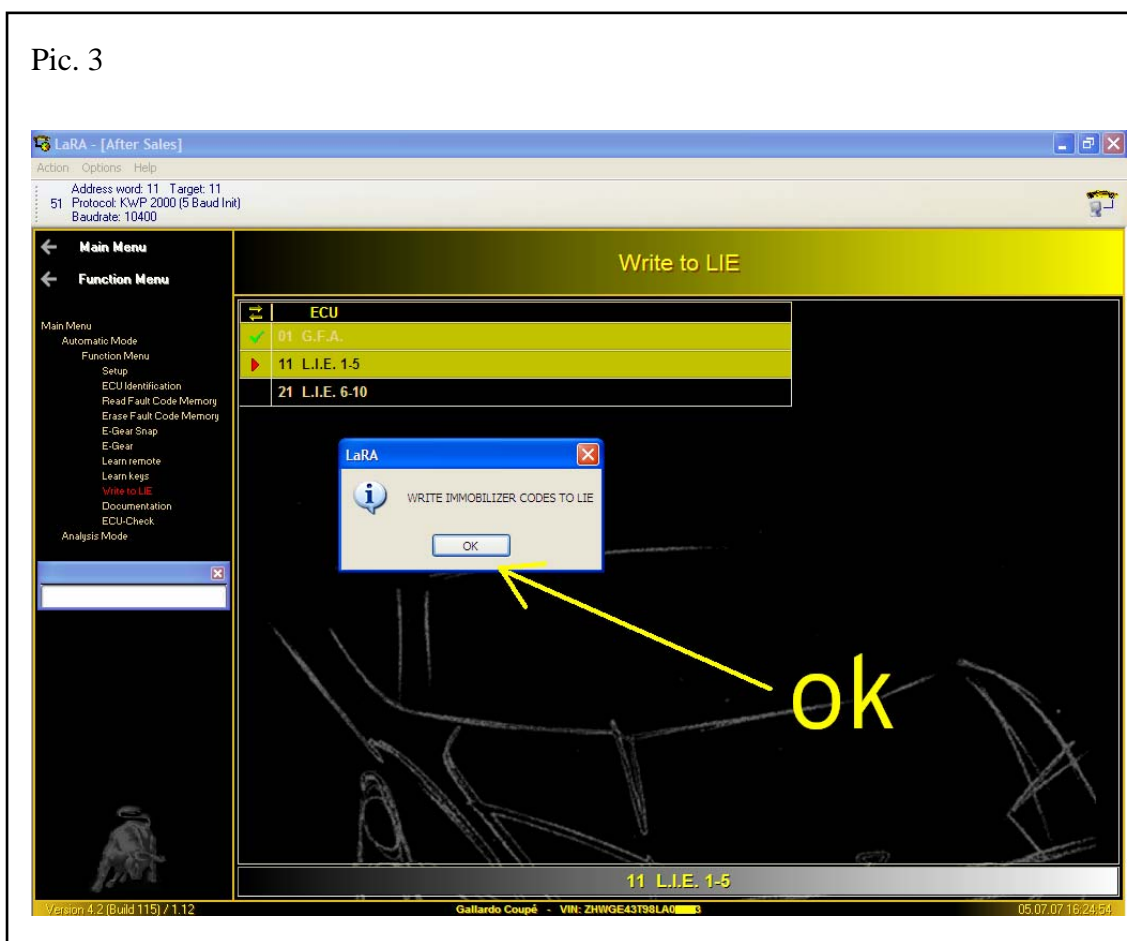
Pic. 2





- 1.7** The reading procedure from the GFA starts automatically, you have only to click OK and write the immobilizer code on the LIEs as shown in picture 3.

Pic. 3



- 1.8** In order to obtain the last software release on the car, start the engine management re-flash procedure for the LIEs and GFA:
- a) Select Setup from the main menu in automatic mode
  - b) Select the two LIEs and the GFA
  - c) Connect the CAN cable interface
  - d) Start ECU check + and click on OK
  - e) LDAS will start automatically and will reflash both LIEs and the GFA
  - f) When the reflash is finished please erase all the errors on the ECUs



- 1.9** Start the engine and warm it up (it is necessary that water and oil temperature are over 90°).
- 1.10** Keep the engine on at idle for 1 minute to start and complete the throttle body self learning procedure.
- 1.11** Send the disassembled LIEs back to the factory.

Your Area Manager is at full disposal for further information.

Best regards

Customer Service