

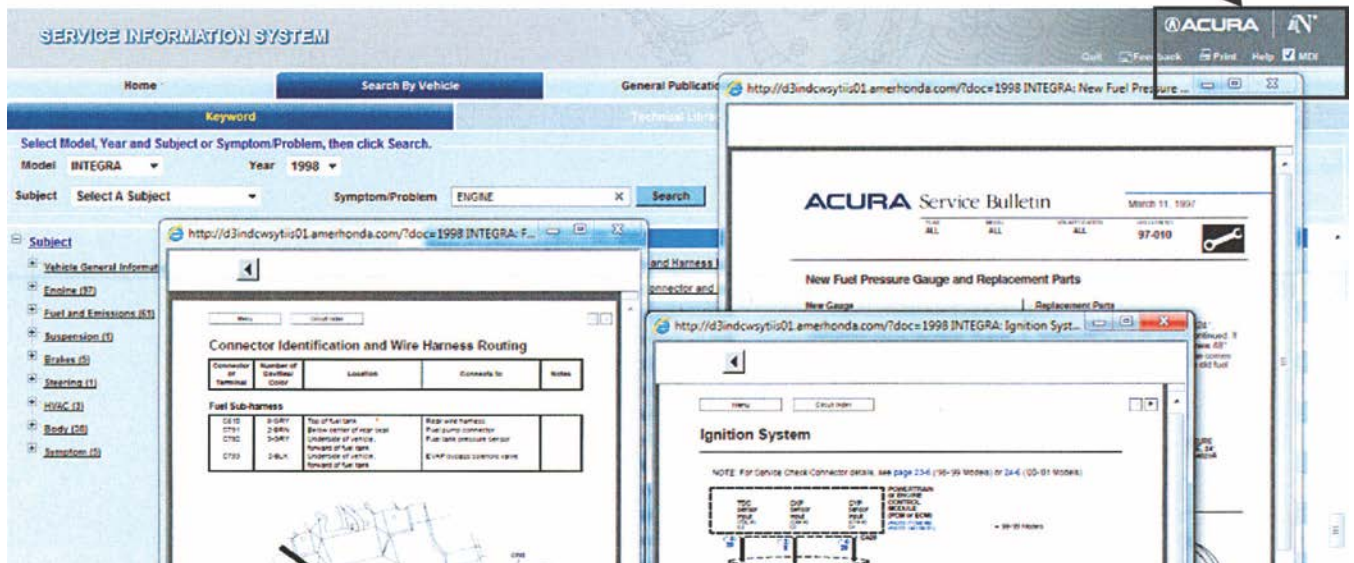
New Features Added to SIS!

AFFECTED VEHICLES

General Information

Good News! We've added a couple of new features to SIS that we think you'll really like. First, we've added a Multi-Document Interface (**MDI**), and second, now you can have the **Model** and **Year** information in the search bars transferrable between certain search pages.

To activate **MDI**, click on the box in the upper right top corner of the screen, The **MDI** (if selected) will be retained for **30 days** or when you manually uncheck it. When opening pages with **MDI** on, these pages will be separate individual links and will have to be closed individually even after closing SIS or logging off from iN. **MDI** allows you to have multiple pages open at the same time when searching thru SIS as shown here, which makes searching thru SIS easier and more efficient.



On the second feature added to SIS, when entering information in **Search By Vehicle**, now **Model** and **Year** will be transferred between the **Search By Vehicle** page **Keyword**, **Technical Library**, and **Flat Rate Time**. The **Symptom/Problem** and **Keyword** information is not transferrable between pages, you'll still need to add that manually. **Model** and **Year** selections will be saved up to **7 days** or until you sign off iN.

SERVICE INFORMATION SYSTEM

Home Search By Vehicle General Publications FI

Keyword Technical Library

Select Model, Year and Subject or Symptom/Problem, then click Search.

Model **RSX** Year **2006**

Subject **Select A Subject** Symptom/Problem X **Search**

SERVICE INFORMATION SYSTEM

Home Search By Vehicle General Publications FI

Keyword **Technical Library**

Select one or more of the following: Model, Year, Keyword. Then select Publication.

Model **RSX** Year **2006**

Keyword X **Search** **Reset**

SERVICE INFORMATION SYSTEM

Home Search By Vehicle General Publications **Flat Rate Labor Time**

egin by entering the Year/Model. Next enter the Keyword and click Search.

[General Flat Rate Information](#)
[Symptom Codes](#) [Flat Rate Comments/Feedback](#)

1. Select Model and Year:

Model **RSX** Year **2006**

2. Type-in Keyword:
 X