



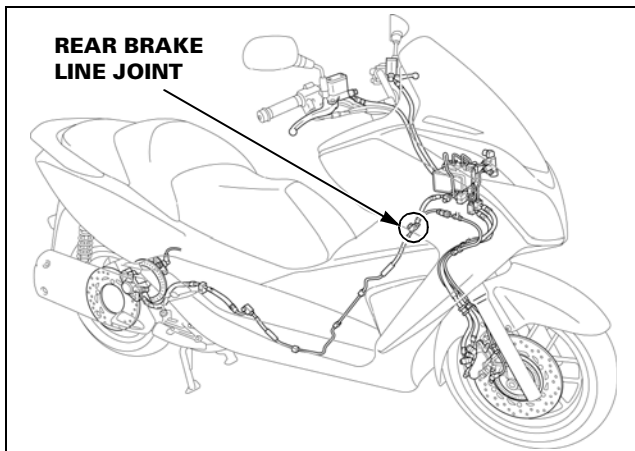
Service Bulletin

American Honda Motor Co., Inc.

SAFETY RECALL

2014 NSS300/A REAR BRAKE LINE JOINT TORQUE

Honda Motor Co., Ltd. is conducting a Safety Recall of all model year 2014 NSS300 and NSS300A (Forza) scooters. Honda has determined that during assembly, the rear brake line joint may have been improperly torqued. If the rear brake line joint is improperly torqued, brake fluid may leak causing a reduction or loss of rear brake pressure.



Honda dealers will torque the rear brake line joint to specification and, if necessary, fill the rear brake reservoir.

Safety Consequence

A reduction or loss of rear brake pressure increases the risk of a crash.

CUSTOMER NOTIFICATION

During the month of March 2016, Honda will mail a letter to all owners of affected vehicles informing them that their scooter is being recalled for a safety related defect. The customer will be made aware of the safety risk and advised to have a Honda dealer confirm the torque on the affected part.

For your reference, a copy of the Customer Letter is reproduced on Page 6 of this Service Bulletin.

AFFECTED UNITS

- NEW** **2014 NSS300** MLHNF040*E5000001 thru MLHNF040*E5001786
2014 NSS300A MLHNF041*E5000001 thru MLHNF041*E5000198
* Denotes check digit

DEALER INVENTORY

Do not sell any un-repaired units.

According to federal law, any affected units in your new inventory cannot be sold or leased until they are repaired according to the REPAIR PROCEDURE in this bulletin and Honda policy prohibits the sale of new or used un-repaired units.

CUSTOMER INFORMATION: The information in this bulletin is intended for use only by skilled technicians who have the proper tools, equipment, and training to correctly and safely maintain your Honda. These procedures should not be attempted by "do-it yourselfers," and you should not assume this bulletin applies to your Honda, or that your Honda has the condition described. To determine whether this information applies, contact an authorized Honda dealer.

NSS300 #2
REVISED MARCH 1, 2016

To search for applicable recalls on a specific unit, refer to *Unit Information* on **iN**.

To manage your affected inventory, use *eResponsibility Report* on **iN**.

REPAIR IDENTIFICATION

Before you begin the repair procedure, check if the repair has been performed on the unit. See the IDENTIFICATION section of this Service Bulletin for details.

- If there is a punch mark at the specified location:
 - No further action is necessary
- If there is no punch mark:
 - You must proceed with the REPAIR PROCEDURE section of this Service Bulletin.

REPAIR PROCEDURE

SERVICE MANUAL

Many steps of the Repair Procedure require that you follow procedures in the Service Manual. Make sure you have the Service Manual at hand before starting the repair procedure.

Electronic Service Manuals are also available on **iN HISP** by following the path below and typing in the VIN or selecting the model and year, and selecting *Service Manual* from the *Select Subject* drop down list.

SERVICE > Service Publications > HISP

BODY PANEL REMOVAL

1. Remove the left and right **SIDE BODY COVERS** by following the procedure on Page 2-14 of the Service Manual.
2. Remove the left and right **FRONT SIDE BODY COVERS** by following the procedure on Page 2-14 of the Service Manual.
3. Remove the **SEAT** by following the procedure on Page 2-15 of the Service Manual.
4. Remove the left and right **FLOOR MATS** by following the procedure on Page 2-5 of the Service Manual.

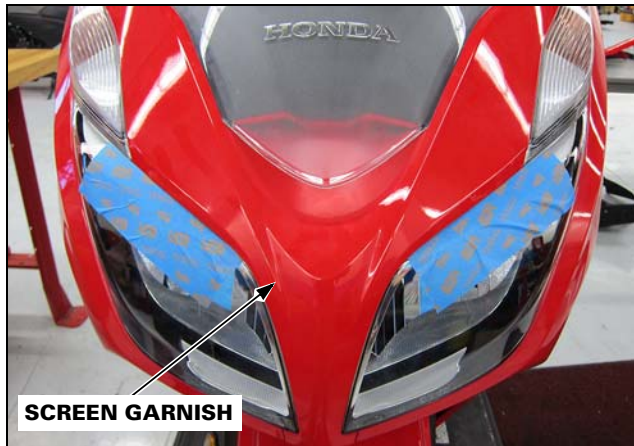
5. Remove the left and right passenger peg covers as shown.
Remove the socket bolt, 5 x 12 mm screw and upper cover.
Remove the 5 x 10 mm screw and lower cover.



6. Remove the **FRONT CENTER COVER** by following the procedure on Page 2-5 of the Service Manual.
7. Remove the left and right **FLOOR STEPS** by following the procedure on Page 2-15 of the Service Manual.

8. Apply masking tape to the left and right headlights at the positions shown to prevent scratches during the repair.

Remove the SCREEN GARNISH by following the procedure on Page 2-4 of the Service Manual.



9. Remove the METER VISOR by following the procedure on Page 2-4 of the Service Manual.
10. Remove the FRONT METER PANEL by following the procedure on Page 2-4 of the Service Manual.
11. Remove the left and right FRONT PANEL by following the procedure on Page 2-12 of the Service Manual.
12. Remove the HANDLE POST COVER by following the procedure on Page 2-12 of the Service Manual.
13. Remove the FRONT HANDLE COVER by following the procedure on Page 2-13 of the Service Manual.
14. Remove the FRONT COVER by following the procedure on Page 2-10 of the Service Manual.
15. Remove the METER PANEL by following the procedure on Page 2-13 of the Service Manual.
16. Remove the INNER COVER by following the procedure on Page 2-17 of the Service Manual.

REAR BRAKE LINE JOINT TORQUE

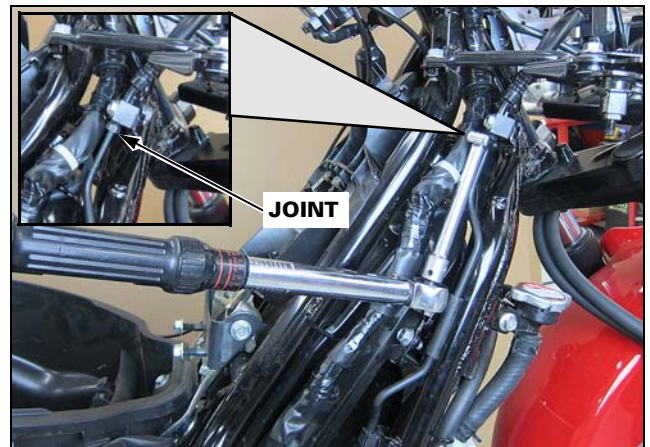
Prepare the required tools as shown:

- Torque wrench
- Extension
- Crow's foot (10 mm)



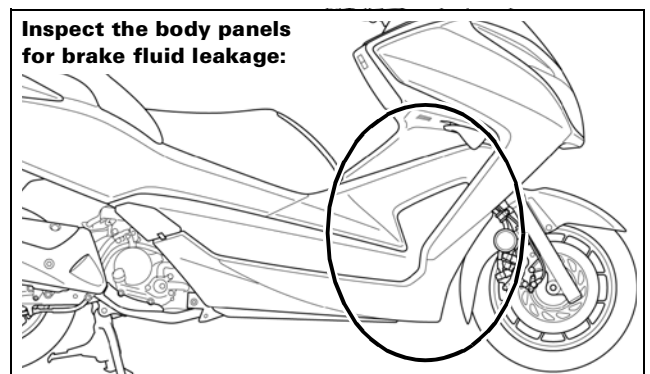
17. Tighten the rear brake line joint to the specified torque as shown.

TORQUE: 14 N·m (1.4 kgf·m, 10 lbf·ft)



18. Inspect the area around and below the rear brake line joint as well as the inside of the right-side body panels for signs of brake fluid leakage.

- If there is brake fluid leakage, proceed to BRAKE FLUID FILLING.
- If there is no brake fluid leakage, proceed to VEHICLE REASSEMBLY.

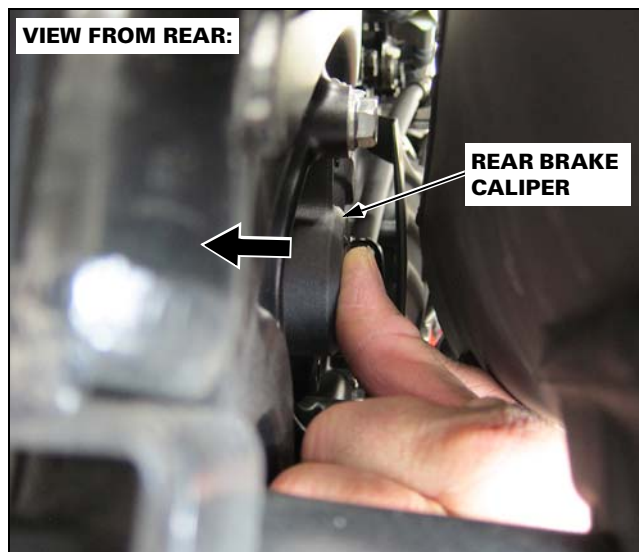


BRAKE FLUID FILLING

NOTE:

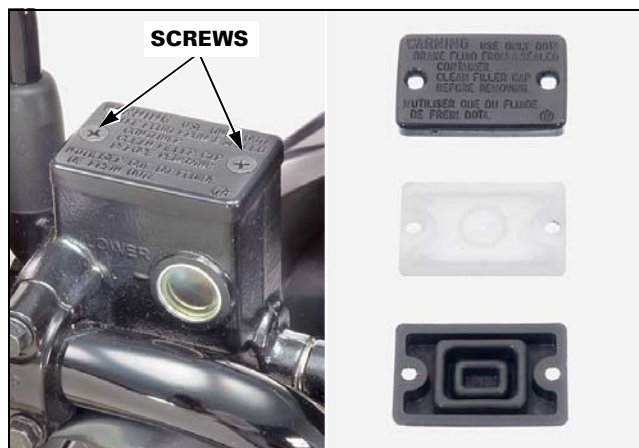
Brake fluid filling is only necessary if there was evidence of brake fluid leakage.

1. Push the rear brake caliper inward until it stops as shown.



2. Support the scooter on its centerstand and turn the handlebar until the left handlebar reservoir is parallel to the ground, before removing the reservoir cap.

Remove the screws, reservoir cap, diaphragm plate, and diaphragm from the left master cylinder.



3. Fill the reservoir with DOT 4 brake fluid to the upper level mark from a sealed container.

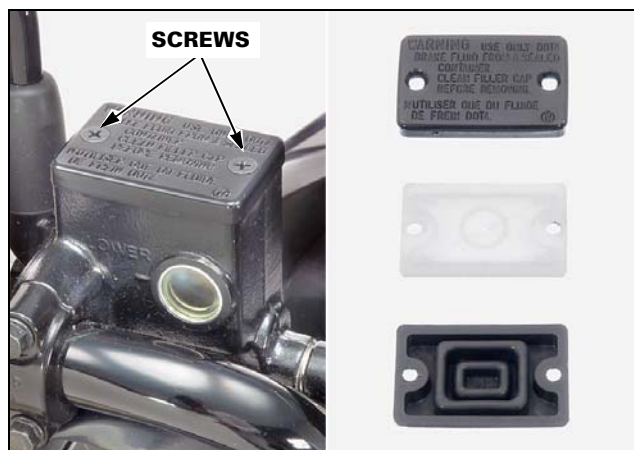
Operate the left brake lever repeatedly until the lever feels firm.



4. Install the diaphragm and diaphragm plate.

Install the reservoir cap and tighten the screws to the specified torque.

TORQUE: 1.5 N-m (0.2 kgf-m, 1.1 lbf-ft)



5. If there is evidence of brake fluid leakage on any plastic or rubber body parts, proceed to DEALER SUPPORT and contact TechLine for further instructions.

VEHICLE REASSEMBLY

Reinstall the removed vehicle parts in the reverse order of disassembly by following the procedures in the Service Manual.

- Reinstall the passenger peg covers.
- Remove the masking tape from the headlights.

IDENTIFICATION

After you have completed the REPAIR PROCEDURE, apply a punch mark below the first character of the VIN located on the frame, under the Owner's Manual holder, inside the luggage box as shown.



CLAIM INFORMATION

This Safety Recall will be in effect indefinitely for the symptoms described on Page 1 of this Service Bulletin, regardless of the date of vehicle purchase.

Recall warranty claims must be submitted within 30 days of the repair order open date. After completing the Service Bulletin repair procedure, submit one warranty claim per unit with the following information:

TEMPLATE

JY3A

Flat Rate Time: 1.6 hrs

PARTS INFORMATION

The repair procedure for this bulletin does not require any parts. If there are parts damaged by brake fluid leakage, contact TechLine.

DEALER SUPPORT

TECHNICAL QUESTIONS

If you have any technical questions relating to repair procedures or parts information, please contact:

Motorcycle TechLine Online:

iN > Service > TechLine > TechLine Connect

Or call (800) 421-1900, option 9

WARRANTY QUESTIONS

If you have any warranty administration questions relating to warranty claim templates, repair verification discrepancies, and claim filing procedures, please call:

Motorcycle Warranty, (800) 421-1900, option 7

TEXT OF CUSTOMER LETTER

CUSTOMER LETTER IS FORTHCOMING.