

00V-340

RECALL CAMPAIGN

REF. NO. 28
STARTER RING GEAR
360 MODENA / 360 MODENA F1

OCTOBER 2000

**READ, INITIAL
AND PASS ON »**

Service Manager	Parts Manager	Service Writer	Technician			Warranty Clerk

Ferrari

Ferrari North America, Inc.

October, 2000

Dear Ferrari Dealer:

Ferrari S.p.A., the manufacturer of Ferrari automobiles, has decided that a defect, which relates to motor vehicle safety exists in certain 1999 - 2000 model year Ferrari 360 Modena / 360 Modena F1 vehicles.



On certain Ferrari vehicles, 360 Modena / 360 Modena F1, with Vehicle Identification Numbers from 114015 to 120496, which have a Vehicle Assembly Number from 32108 to 37606, the starter ring gear, which is attached to the clutch assembly with three mounting screws, may become separated from the clutch assembly. This possible failure could be caused by:

1. The fracture of the starter ring gear itself at the mounting holes due to an incorrect positioning of the mounting holes, or;
2. By the failure of the mounting screws.

If either of these conditions would occur, the result would be fragments of the starter ring gear being thrown from the clutch area. If these fragments came into contact with the vehicle's tire, a puncture could occur resulting in the possible loss of vehicle control with the possibility of a vehicle crash without prior warning to the driver.

The remedy consists of:

1. Replacing the starter ring gear mounting screws with new screws having a higher tensile strength and measuring the starter ring gear mounting holes. The measurement of the starter ring gear will determine if the correct position of the mounting holes exists and if the position is incorrect, the starter ring gear will also be replaced, or;
2. Replacing the starter ring gear with a new ring gear having the correctly positioned mounting holes and the replacement of the mounting screws with new screws having a higher tensile strength.

This operation will be performed free of charge to the vehicle owner, and will require up to approximately 3.8 hours to complete.

We have accordingly sent notices to all owners of the affected vehicles advising them of this problem and requesting that they contact any Authorized Ferrari Dealer for the repairs, as per the attached notification letter.

An initial supply of parts will be sent to you based on the number of vehicles you service. Additional supplies of parts may be ordered from our parts department through the normal parts ordering process.



Upon transmittal of the repair under the normal warranty system, we will of course reimburse you for the labor and parts necessary to carry out this campaign.

Obviously, if you have any of the affected vehicles in your stock, you must not sell them until you have performed the necessary repairs. If you have already sold any vehicles with the chassis numbers specified in the enclosed instructions and have not yet sent in the retail sales cards, please do so at once so we may notify these owners.

Thank you for your cooperation.

Best Regards,

A handwritten signature in black ink, appearing to read 'Enzo Francesconi', with a long horizontal flourish extending to the right.

Enzo Francesconi
Director of Technical Services

RECALL CAMPAIGN NO. 28
360 Modena / 360 Modena F1 – Starter Ring Gear
RECALL CAMPAIGN OVERVIEW

INTRODUCTION: Ferrari 360 Modena / 360 Modena F1 Starter Ring Gear

SUBJECT: Recall Campaign No. 28

VEHICLES: Ferrari 360 Modena / 360 Modena F1 (see below)

Group A
Model Year 1999
Vehicle Assembly Numbers from 32108 to 34204
Vehicle Identification Numbers from 114015 to 116915
Engine Numbers from 52306 to 54189
See attached list of affected vehicles for this group

Group B
Model Year 1999 to 2000
Vehicle Assembly Numbers from 34087 to 36340
Vehicle Identification Numbers from 115020 to 119174
Engine Numbers from 54342 to 56601
See attached list of affected vehicles for this group

Group C
Model Year 1999 to 2000
Vehicle Assembly Numbers from 36335 to 37606
Vehicle Identification Numbers from 118458 to 120496
Engine Numbers from 56610 to 57849
See attached list of affected vehicles for this group

CONDITION: The starter ring gear which is attached to the clutch assembly with three mounting screws may become separated from the clutch assembly. This possible failure could be caused by:

1. The fracture of the starter ring gear itself at the mounting holes due to an incorrect positioning of the mounting holes, or;
2. By the failure of the mounting screws.

REMEDY: For the vehicles in the groups identified as "A" and "C" only:
Replacing the starter ring gear mounting screws with new screws having a higher tensile strength and measuring the starter ring gear mounting holes. The measurement of the starter ring gear mounting holes will determine if the correct position of the mounting holes exists and if the position is incorrect, the starter ring gear must also be replaced.

For the vehicles in the groups identified as "B" only:
Replacing the starter ring gear with a new ring gear having the correctly positioned mounting holes and the replacement of the mounting screws with new screws having a higher tensile strength.

RECALL CAMPAIGN NO. 28
360 Modena / 360 Modena F1 - Starter Ring Gear
 Page 2

PARTS:

The new parts are identified by the following part numbers:

Old Part Number	New Part Number	Quantity	Description
14305424	186196	3	Screw
127494	127494 (no change)	3	Washer
176917 (series 4)	176917 (series 2)	1	Ring Gear

Note 1: Any stock you may have of the starter ring gear part number 176917 series 4 (fig. 2) must be returned to Ferrari North America.

Note 2: An initial supply of parts will be sent to you based on the number of cars you service. Any additional quantities must be ordered from our parts department following the normal parts ordering process.

LABOR:

Section 1: Replacement of the Starter Ring Gear Screws.
 (for groups "A" and "C")

Cost Code	24
Campaign Number.....	28
Defect Code.....	01
Component Code.....	210 084
Labor Operation (replace screws, time 1.4)	210 084 1
Total Operation Time.....	1.4 hours

Section 1a: Replacement of the Starter Ring Gear Screws and the Starter Ring Gear.

(for groups "A" and "C", if necessary)

Cost Code.....	24
Campaign Number.....	28
Defect Code.....	01
Component Code.....	210 084
Labor Operations:	
R&R mechanical gearbox, motor in car, (time 8.1).....	300 001 0
R&R F1 gearbox, motor in car, (time 8.4).....	300 001 1
R&R or replace ring gear, (time 0.4).....	210 032 0
Total Operation Time:	
Mechanical gearbox.....	8.5 hours
F1 gearbox.....	8.8 hours

Section 2: Replacement of the Starter Ring Gear.

(for group "B")

Cost Code.....	24
Campaign Number.....	28
Defect Code.....	01
Component Code.....	210 033
Labor Operations:	
R&R mechanical gearbox, motor in car, (time 8.1).....	300 001 0
R&R F1 gearbox, motor in car, (time 8.4).....	300 001 1
R&R or replace ring gear, (time 0.4).....	210 032 0
Total Operation Time:	
Mechanical gearbox.....	8.5 hours
F1 gearbox.....	8.8 hours

REIMBURSEMENT:

Upon receipt of a warranty claim via M.O.D.I.S.

RECALL # 28
360 Modena / 360 Modena F1
Starter Ring Gear
Technical Instructions

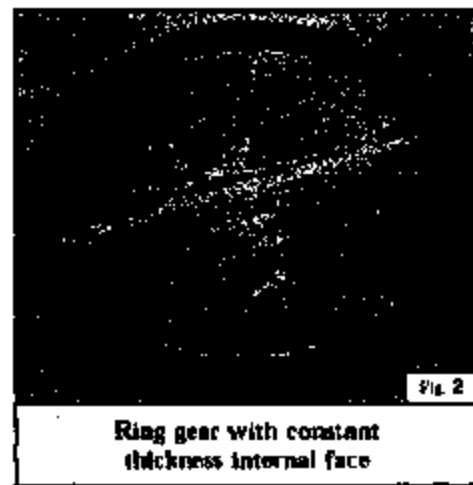
This recall involves 3 different groups of vehicles. See the attached list of affected vehicles for each group. Please read all instructions thoroughly before starting and be sure you are using the instructions that correspond to the appropriate vehicle group at issue.

Group A – From the start of production up to engine number 54232, these vehicles were fitted with the starter ring gear part number 176917 series 2 (fig. 1) and the mounting screws part number 14305424.

Group B – From engine number 54233 up to engine number 56604, these vehicles were fitted with the starter ring gear part number 176917 series 4 (fig. 2) and the mounting screws part number 14305424.

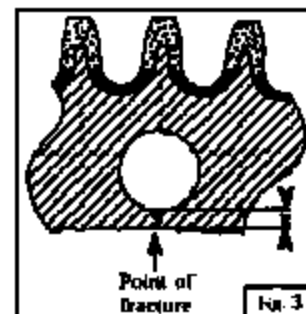
Group C – From engine number 56605 up to engine number 57901, these vehicles were fitted with the starter ring gear part number 176917 series 2 (fig. 1) and the mounting screws part number 14305424.

Current Production - From engine number 57902, all vehicles are fitted with the starter ring gear part number 176917 series 2 (fig. 1) and the mounting screws part number 186196.



The starter ring gear which is attached to the clutch assembly with three mounting screws may become separated from the clutch assembly. This possible failure could be caused by:

1. The fracture of the starter ring gear itself at the mounting holes due to an incorrect positioning of the mounting holes, or;
2. By the failure of the mounting screws.



Remedy for vehicles in groups "A" and "C" only

Replacement of the starter ring gear mounting screws and the measurement of the ring gear.

- Position the car on a lift;
- Remove the starter motor;
- Remove the grill (part number 171701) to enable the flywheel to be rotated by means of a suitable tool, being careful not to damage either the teeth of the ring gear or the alloy transmission casing;
- Through the starter motor hole, loosen the three (3) original mounting screws (part number 14305424) and replace them with the new screws (part number 186196) using new washers (part number 127494).
- The new screws must be tightened in two steps using a torque wrench.

The first step is to tighten the screws to 9 Nm (6.5 ft.lbs.)

The second step is to tighten the screws to a final torque of 15 Nm (11.0 ft.lbs.)

- DO NOT use any lubrication on the screw threads

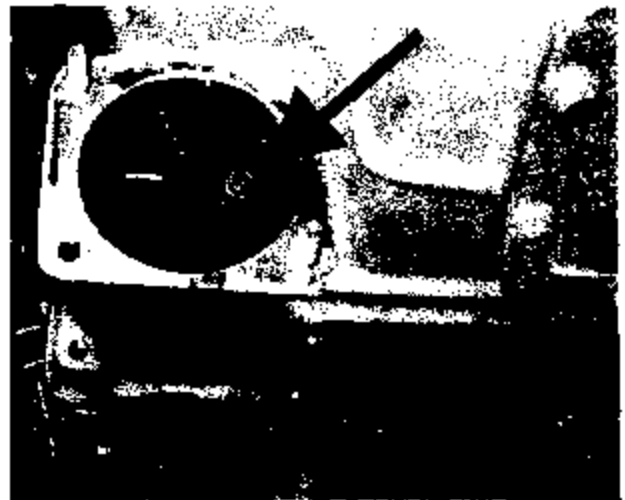


Fig. 4

IMPORTANT NOTE: During the replacement of the mounting screws you must measure all three ring gear mounting holes (dimension "X", fig. 5) using a precision caliper. If any one of the measurements is less than 1.45mm it will be necessary to replace the ring gear as well. If this is the case, follow the instructions for replacement of the ring gear in group "B" vehicles set forth below.

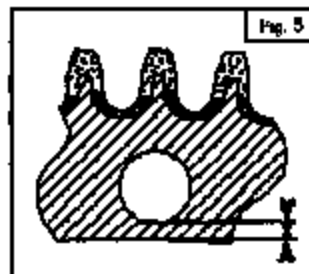


Fig. 5

Upon completion of these repairs it is necessary to apply a dab of RED paint on the nut fixing the gearbox to the engine to enable identification of updated vehicles (see fig. 6).



Fig. 6

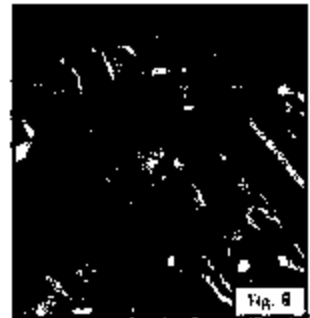
Remedy for vehicles in group "B" only

Replacement of the starter ring gear.

This is mandatory for all cars listed in group "B" [this should only be performed on cars listed in groups "A" and "C" if the measurement described above is less than 1.45mm.]

- Follow the instructions for replacement of the starter ring gear shown in the Workshop Manual Section "D", Page 24.
- Fitting of the new ring gear must be accomplished without using force, and you must replace the three (3) original mounting screws (part number 14305424) with the new mounting screws (part number 186196) using new washers (part number 127494).
- The new screws must be tightened in two steps using a torque wrench.
 - The first step is to tighten the screws to 9 Nm (6.5 ft.lbs.)
 - The second step is to tighten the screws to a final torque of 15 Nm (11.0 ft.lbs.)
- **DO NOT** use any lubrication on the screw threads

Upon completion of these repairs it is necessary to apply a dab of RED paint on the nut fixing the gearbox to the engine to enable identification of updated vehicles (see fig. 6).



Recall #28
List of Affected Vehicles
360 Modena / 360 Modena F1
Starter Ring Gear
GROUP "A"

<u>Vehicle Identification Number</u>	<u>Vehicle Assembly Number</u>	<u>Vehicle Engine Number</u>
114015	32108	52306
114021	32486	52740
115013	32528	52719
115014	32611	52861
115015	32686	52899
115016	32760	52954
115017	32828	53089
115018	32863	53149
115019	32875	53164
115250	33097	53388
115251	33293	53577
115471	32972	53235
116132	33129	53411
116133	33252	53534
116172	33228	53523
116174	33242	53531
116177	33271	53552
116179	33359	53656
116351	33424	53708
116352	33291	53568
116353	33313	53568
116354	33319	53631
116423	33458	53731
116442	33464	53735
116443	33480	53778
116444	33508	53808
116447	33579	53849
116470	33536	53692
116471	33632	53875
116472	33608	53889
116586	33612	53867
116587	33650	53939
116588	33662	53951
116589	33704	53978
116590	33636	53927

Recall #28
List of Affected Vehicles
360 Modena / 360 Modena F1
Starter Ring Gear
GROUP "A"

<u>Vehicle Identification Number</u>	<u>Vehicle Assembly Number</u>	<u>Vehicle Engine Number</u>
116591	33708	53986
116592	33758	54048
116629	33642	53929
116632	33822	54103
116633	33747	54008
116635	33860	54136
116636	33781	54063
116637	33785	54065
116639	33798	54077
116641	33757	54053
116736	33887	54145
116753	33808	54087
116754	33872	54143
116755	33812	54097
116756	33836	54115
116757	33826	54111
116758	33880	54137
116759	33882	54125
116915	34204	54189

Recall # 28
List of Affected Vehicles
360 Modena / 360 Modena F1
Starter Ring Gear
GROUP "B"

<u>Vehicle Identification Number</u>	<u>Vehicle Assembly Number</u>	<u>Vehicle Engine Number</u>
115020	34087	54342
116631	34767	55049
116760	34626	54902
116761	34242	54531
116762	34243	54528
116834	34200	54490
116835	34221	54502
116836	34157	54436
116837	34222	54508
116838	34238	54527
116839	34257	54526
116840	34268	54542
116841	34271	54548
116842	34170	54487
116843	34201	54504
116904	34252	54540
116905	34179	54441
116906	34272	54545
116907	34273	54551
116908	34178	54482
116909	34226	54520
116910	34194	54501
116911	34259	54541
116912	34244	54539
116913	34217	54442
116914	34260	54532
116917	34270	54516
116918	34276	54559
116921	34130	54414
117277	34180	54488
117278	34233	54525
117279	34258	54514
117280	34275	54549
117281	34297	54578
117303	34288	54570
117304	34336	54638
117305	34365	54665

Recall # 28
List of Affected Vehicles
360 Modena / 360 Modena F1
Starter Ring Gear
GROUP "B"

<u>Vehicle Identification Number</u>	<u>Vehicle Assembly Number</u>	<u>Vehicle Engine Number</u>
117307	34385	54484
117308	34400	54691
117309	34504	54768
117310	34519	54807
117311	34543	54808
117312	34564	54843
117313	34789	55076
117314	34567	54855
117315	34583	54833
117372	34290	54556
117373	34299	54577
117374	34300	54576
117375	34313	54583
117376	34314	54585
117377	34322	54637
117378	34361	54659
117379	34363	54558
117380	34436	54714
117381	34369	54667
117382	34387	54680
117383	34403	54589
117384	34415	54701
117385	34437	54723
117386	34438	54717
117387	34447	54730
117388	34464	54737
117389	34465	54739
117390	34485	54751
117462	34590	54865
117463	34603	54890
117464	34636	54907
117465	34640	54900
117466	34993	55265
117467	34905	55198
117468	34906	55208
117469	34907	55205
117470	34487	54710

Recall # 28
List of Affected Vehicles
360 Modena / 360 Modena F1
Starter Ring Gear
GROUP "B"

<u>Vehicle Identification Number</u>	<u>Vehicle Assembly Number</u>	<u>Vehicle Engine Number</u>
117540	34655	54912
117541	34523	54811
117543	34545	54828
117544	34621	54889
117545	34588	54861
117546	34582	54863
117550	34625	54895
117551	34832	54897
117552	34633	54908
117591	34622	54894
117620	34653	54910
117621	34684	54974
117622	34689	54972
117623	34685	54916
117624	34693	54975
117625	34696	54983
117627	34721	54995
117628	34720	54997
117630	34730	55010
117631	34786	55077
117632	34740	55022
117825	34780	55037
117826	34782	55053
117827	34788	55080
117828	34790	55078
117829	34800	55091
117830	34811	55095
117831	34812	55092
117832	34825	55103
117833	34827	55106
117834	34845	55159
117836	34872	55161
117837	34873	55174
117838	34874	55172
117839	34882	55187
117840	34883	55184
117841	34898	55188

Recall # 28
List of Affected Vehicles
360 Modena / 360 Modena FI
Starter Ring Gear
GROUP "B"

<u>Vehicle Identification Number</u>	<u>Vehicle Assembly Number</u>	<u>Vehicle Engine Number</u>
117842	34899	55194
117843	34947	55230
117844	34930	55215
117845	34932	55218
117847	34948	55234
117848	34978	55258
117849	34979	55256
117850	35017	55318
117851	35020	55324
117852	35040	55339
117853	35042	55343
117854	35049	55334
117856	35061	55351
117857	35070	55365
117858	34816	55102
117859	35026	55331
117976	34908	55202
117977	34934	55224
117978	34935	55200
117979	34949	55236
117980	34951	55237
117981	34909	55195
118051	35232	55531
118053	35076	55368
118054	35077	55364
118055	35091	55369
118056	35177	55443
118057	35178	55485
118059	35098	55383
118063	35120	55400
118064	35121	55405
118065	35129	55408
118066	35148	55420
118067	35149	55428
118068	35150	55425
118070	35158	55387
118071	35160	55438

Recall # 28
List of Affected Vehicles
360 Modena / 360 Modena F1
Starter Ring Gear
GROUP "B"

<u>Vehicle Identification Number</u>	<u>Vehicle Assembly Number</u>	<u>Vehicle Engine Number</u>
118072	35179	55486
118073	35193	55499
118074	35195	55500
118075	35206	55512
118076	35211	55507
118077	35268	55574
118078	35207	55503
118080	35226	55516
118081	35229	55523
118082	35251	55514
118083	35252	55529
118085	35043	55341
118086	35170	55442
118121	34958	55245
118122	34972	55255
118123	35001	55269
118124	35059	55347
118125	35220	55520
118126	35209	55510
118127	35223	55519
118128	35253	55532
118129	35267	55571
118130	35271	55578
118131	35285	55577
118132	35289	55580
118191	35258	55539
118192	35265	55534
118193	35266	55549
118194	35288	55585
118195	35290	55590
118196	35292	55588
118197	35306	55601
118198	35307	55596
118199	35296	55598
118200	35312	55610
118201	35314	55604
118202	35318	55614

Recall # 28
List of Affected Vehicles
360 Modena / 360 Modena F1
Starter Ring Gear
GROUP "B"

<u>Vehicle Identification Number</u>	<u>Vehicle Assembly Number</u>	<u>Vehicle Engine Number</u>
118203	35331	55620
118204	35332	55624
118205	35335	55628
118206	35336	55627
118207	35355	55670
118208	35356	55609
118209	35358	55671
118210	35367	55680
118211	35399	55705
118212	35448	55745
118213	35369	55672
118214	35386	55694
118215	35213	55511
118355	35295	55595
118356	35297	55597
118357	35315	55607
118358	35313	55611
118359	35333	55626
118360	35353	55630
118361	35357	55669
118362	35368	55677
118363	35384	55699
118391	35409	55722
118392	35410	55687
118393	35422	55725
118394	35423	55717
118395	35472	55771
118396	35430	55740
118397	35432	55737
118398	35451	55753
118399	35452	55743
118400	35450	55729
118401	35453	55757
118402	35466	55754
118403	35467	55760
118404	35468	55755
118405	35488	55728

Recall # 28
List of Affected Vehicles
360 Modena / 360 Modena F1
Starter Ring Gear
GROUP "B"

<u>Vehicle Identification Number</u>	<u>Vehicle Assembly Number</u>	<u>Vehicle Engine Number</u>
118406	35485	55770
118407	35486	55776
118408	35489	55774
118409	35501	55792
118410	35502	55795
118411	35503	55796
118412	35505	55784
118413	35512	55799
118414	35524	55837
118415	35525	55835
118416	35534	55849
118417	35535	55853
118418	35537	55846
118419	35538	55859
118420	35553	55850
118421	35554	55867
118422	35556	55875
118423	35470	55765
118454	35403	55716
118455	35421	55715
118457	35387	55886
118462	36170	56443
118540	35557	55871
118541	35578	55880
118606	35586	55885
118607	35587	55887
118608	35589	55890
118609	35579	55883
118610	35596	55897
118611	35604	55904
118666	35606	55907
118670	35607	55911
118671	35613	55913
118672	35621	55919
118673	35623	55917
118674	35624	55920
118675	35810	56065

Recall # 28
List of Affected Vehicles
360 Modena / 360 Modena F1
Starter Ring Gear
GROUP "B"

<u>Vehicle Identification Number</u>	<u>Vehicle Assembly Number</u>	<u>Vehicle Engine Number</u>
118676	35788	56061
118677	35785	56076
118748	36014	56336
118749	36018	56345
118861	36182	56516
118862	35786	56078
118863	35797	56094
118864	35798	56096
118865	35801	56099
118866	35819	56111
118867	35842	56165
118868	35843	56121
118869	35844	56167
118870	35874	56179
118871	35852	56173
118872	35853	56169
118873	35870	56176
118874	35871	56177
118875	35884	56192
118876	35896	56202
118877	35897	56201
118878	35918	56220
118879	35920	56219
118880	35941	56230
118881	35948	56232
118882	35949	56235
118883	35964	56238
118884	35962	56242
118885	35966	56244
118886	35976	56257
118887	35986	56261
118888	35990	56260
118889	35992	56264
118890	36001	56324
118891	36046	56346
118892	36005	56274
118893	36009	56325

Recall # 28
List of Affected Vehicles
360 Modena / 360 Modena F1
Starter Ring Gear
GROUP "B"

<u>Vehicle</u> <u>Identification</u> <u>Number</u>	<u>Vehicle</u> <u>Assembly</u> <u>Number</u>	<u>Vehicle</u> <u>Engine</u> <u>Number</u>
118894	36015	56335
118895	36003	56326
118896	36052	56359
118897	36133	56437
118898	35821	56109
118899	35911	56215
118900	35996	56279
119021	36044	56356
119022	36053	56357
119023	36061	56375
119024	36084	56382
119025	36134	56425
119026	36112	56409
119028	36127	56432
119029	36138	56442
119030	36219	56528
119031	36216	56523
119032	36213	56519
119033	36226	56539
119034	36254	56545
119035	36269	56554
119036	36306	56595
119037	36311	56599
119038	36336	56582
119039	36340	56601
119040	36122	56418
119171	36055	56367
119172	36105	56395
119173	36185	56465
119174	36287	56560

Recall # 28
List of Affected Vehicles
360 Modena / 360 Modena F1
Starter Ring Gear
GROUP "C"

<u>Vehicle Identification Number</u>	<u>Vehicle Assembly Number</u>	<u>Vehicle Engine Number</u>
118458	36874	57144
119027	36474	56794
119170	36381	56652
119175	36341	56610
119310	36385	56721
119311	36418	56732
119312	36415	56726
119313	36425	56749
119314	36447	56758
119315	36452	56766
119316	36458	56772
119317	36462	56775
119318	36469	56782
119319	36483	56789
119452	36518	56817
119453	36383	56656
119454	36390	56657
119455	36391	56723
119456	36413	56725
119457	36414	56729
119458	36519	56821
119459	36421	56738
119460	36422	56733
119461	36424	56741
119462	36427	56744
119463	36450	56739
119464	36435	56743
119465	36448	56753
119466	36511	56810
119467	36461	56767
119468	36456	56764
119469	36457	56768
119470	36465	56769
119471	36477	56785
119472	36464	56776
119473	36467	56780

Recall # 28
List of Affected Vehicles
360 Modena / 360 Modena F1
Starter Ring Gear
GROUP "C"

<u>Vehicle Identification Number</u>	<u>Vehicle Assembly Number</u>	<u>Vehicle Engine Number</u>
119474	36468	56781
119475	36470	56784
119476	36475	56790
119477	36525	56830
119478	36479	56796
119480	36481	56792
119481	36482	56788
119482	36491	56803
119483	36493	56811
119484	36510	56814
119485	36512	56815
119486	36516	56822
119525	36489	56797
119526	36492	56809
119527	36517	56818
119528	36520	56823
119617	36476	56760
119618	36484	56783
119619	36537	56828
119620	36619	56888
119621	36734	56979
119622	36727	56978
119671	37011	57294
119672	37016	57307
119673	37020	57313
119674	37053	57331
119675	36771	57038
119725	36880	57152
119726	36890	57165
119728	36919	57185
119729	36926	57200
119731	37013	57304
119732	37015	57306
119733	37041	57317
119735	37089	57352
119736	37154	57438

Recall # 28
List of Affected Vehicles
360 Modena / 360 Modena F1
Starter Ring Gear
GROUP "C"

<u>Vehicle Identification Number</u>	<u>Vehicle Assembly Number</u>	<u>Vehicle Engine Number</u>
119738	37052	57329
119739	37046	57321
119740	37050	57326
119741	37092	57345
119876	37270	57539
119877	37087	57354
119879	37211	57480
119880	37250	57531
119881	36843	57099
119979	37081	57347
119980	37085	57342
119981	37093	57356
119982	37094	57357
119983	37101	57363
119984	37115	57366
119985	37128	57371
119986	37118	57368
119987	37129	57374
119988	37131	57382
119989	37139	57384
119990	37142	57387
119991	37143	57386
119992	37151	57429
119993	37153	57439
119994	37233	57515
119995	37180	57444
119996	37187	57453
119997	36858	57137
119998	36923	57181
119999	37018	57308
120000	37212	57482
120054	37188	57455
120055	37197	57476
120056	37145	57431
120057	37242	57513
120058	37179	57443

Recall # 28
List of Affected Vehicles
360 Modena / 360 Modena F1
Starter Ring Gear
GROUP "C"

<u>Vehicle</u> <u>Identification</u> <u>Number</u>	<u>Vehicle</u> <u>Assembly</u> <u>Number</u>	<u>Vehicle</u> <u>Engine</u> <u>Number</u>
120080	37189	57456
120116	37190	57452
120118	37206	57472
120119	37209	57475
120180	37208	57477
120181	37235	57492
120182	37237	57511
120183	37236	57514
120190	37247	57523
120191	37249	57526
120192	37244	57522
120183	37246	57525
120205	37274	57541
120206	37271	57530
120207	37273	57540
120208	37272	57544
120215	37331	57573
120216	37280	57542
120217	37281	57551
120218	37282	57552
120219	37284	57554
120229	37319	57578
120230	37320	57570
120231	37314	57565
120232	37316	57569
120233	37317	57571
120242	37285	57556
120243	37324	57577
120244	37325	57611
120245	37326	57553
120246	37328	57580
120264	37365	57640
120271	37400	57667
120277	37425	57712
120279	37432	57720
120280	37436	57724

Recall # 28
List of Affected Vehicles
360 Modena / 360 Modena F1
Starter Ring Gear
GROUP "C"

<u>Vehicle Identification Number</u>	<u>Vehicle Assembly Number</u>	<u>Vehicle Engine Number</u>
120291	37523	57790
120302	37350	57579
120303	37353	57625
120304	37352	57623
120305	37357	57624
120306	37351	57622
120311	37366	57639
120312	37361	57630
120313	37363	57638
120314	37364	57637
120319	37386	57642
120320	37387	57651
120321	37388	57653
120322	37397	57660
120323	37398	57664
120329	37395	57652
120330	37399	57665
120331	37406	57707
120332	37409	57708
120339	37411	57663
120340	37430	57709
120341	37433	57717
120342	37410	57703
120347	37435	57721
120348	37440	57723
120349	37443	57728
120350	37444	57732
120355	37462	57733
120356	37461	57741
120357	37464	57743
120358	37476	57758
120359	37478	57760
120362	37510	57774
120363	37511	57740
120364	37514	57783
120365	37518	57775

Recall # 25
List of Affected Vehicles
360 Modena / 360 Modena F1
Starter Ring Gear
GROUP "C"

<u>Vehicle Identification Number</u>	<u>Vehicle Assembly Number</u>	<u>Vehicle Engine Number</u>
120366	37521	57784
120471	37542	57787
120472	37543	57801
120473	37546	57800
120480	37555	57848
120481	37558	57803
120482	37554	57813
120496	37806	57849

Ferrari

Ferrari North America, Inc.

October 31, 2000

«FIRST» «MI» «LAST»
«ADD1»
«ADD2»
«CITY», «ST» «ZIP»



Serial Number: «VIN» Assembly Number: «ASSY»

Dear Ferrari Customer:

This notice is sent to you in accordance with the requirements of the National Traffic and Motor Vehicle Safety Act.

Ferrari S.p.A., the manufacturer of Ferrari automobiles, has decided that a defect, which relates to motor vehicle safety exists in certain 1999 - 2000 model year Ferrari 360 Modena / 360 Modena F1 vehicles.

On certain Ferrari vehicles, 360 Modena / 360 Modena F1, with Vehicle Identification Numbers from 114015 to 120496, which have a Vehicle Assembly Number from 32108 to 37606, the starter ring gear, which is attached to the clutch assembly with three mounting screws, may become separated from the clutch assembly. This possible failure could be caused by:

1. The fracture of the starter ring gear itself at the mounting holes due to an incorrect positioning of the mounting holes, or;
2. By the failure of the mounting screws.

If either of these conditions would occur, the result would be fragments of the starter ring gear being thrown from the clutch area. If these fragments came into contact with the vehicle's tire, a puncture could occur resulting in the possible loss of vehicle control with the possibility of a vehicle crash without prior warning to the driver.

The remedy consists of:

1. Replacing the starter ring gear mounting screws with new screws having a higher tensile strength and measuring the starter ring gear mounting holes. The measurement of the starter ring gear will determine if the correct position of the mounting holes exists and if the position is incorrect, the starter ring gear will also be replaced, or;
2. Replacing the starter ring gear with a new ring gear having correctly positioned mounting holes and the replacement of the mounting screws with new screws having a higher tensile strength.



Since your car is among those affected by the above condition, we kindly ask you to immediately contact any Authorized Ferrari Dealer in order to arrange an inspection of your automobile and to have the corrective action performed.

The corrective action for the above listed repair will be performed free of charge to you and will require up to approximately 8,8 hours to complete. Please plan, however, to leave your vehicle with the dealership to allow the dealer some flexibility for scheduling your repairs.

By the time you receive this letter, the Authorized Ferrari Dealers will have been supplied with the parts and the instructions to perform the repair. If the Dealer fails or is unable to make the necessary repairs free of charge within a reasonable time, or if you have any problem obtaining the needed repair, you should inform the National Headquarters of Ferrari North America, Inc. at:

Ferrari North America, Inc.
250 Sylvan Avenue
Englewood Cliffs, NJ 07632
(201) 816-2651 (National Technical Office)

If the affected vehicle is not repaired free of charge to you within a reasonable time, you may submit a written complaint to the Administrator, National Highway Traffic Safety Administration, (NHTSA), 400 Seventh Street, SW, Washington, DC 20590. You may also telephone the Auto Safety Hotline at 888-327-4236.

We urge you to comply with this notice promptly and we apologize for any inconvenience this may cause you.

Best Regards,

A handwritten signature in black ink, appearing to read 'Enzo Francesconi', written in a cursive style.

Enzo Francesconi
Director of Technical Services