

SAFETY RECALL CAMPAIGN 2A49 SFV650 Fuel Tank Breather Hose

Affected Models: 2013 and 2015 SFV650 (Only select units – see the VIN ranges below)

Reference: 2013 and 2015 SFV650 Service Manual (P/N 99500-36190-03E)

Affected Departments: Management, Service, Warranty, Sales, Parts, Accessories

This notice is sent to you in accordance with the requirements of the National Traffic and Motor Vehicle Safety Act.

Suzuki Motor Corporation has decided that a defect which relates to motor vehicle safety exists in certain 2013 and 2015 model year SFV650 motorcycles.

STOP DELIVERY OF AFFECTED MOTORCYCLES IMMEDIATELY

DO NOT SELL OR DELIVER an affected motorcycle to a customer until you have completed, or verified completion of, the repair procedures outlined in this bulletin.

It is a violation of Federal law to sell or deliver any new motorcycle or item of motor vehicle equipment subject to a safety recall campaign under a sale or lease until the defect or non-compliance has been corrected.

In addition, selling an unrepaired affected motorcycle is a direct violation of your Suzuki dealer agreement and may lead to additional sanctions.

What is the problem?

During assembly, Fuel Tank Breather Hose No. 1 may not have been positioned properly under the fuel tank, and the hose may be kinked. If the hose is kinked, airflow through the hose is restricted and the internal pressure of the tank can become abnormally high or low, causing the tank to deform and possibly crack. If the fuel tank develops a crack, a fuel leak can occur, increasing the risk of a fire.

<u>Affected Models</u>	<u>Model Year</u>	<u>VIN Range</u>
SFV650L3	2013	JS1VP55A1D2100564 ~ JS1VP55A4D2100803
SFV650L4	2014	No Affected Units
SFV650L5	2015	JS1VP55A8F2100001 ~ JS1VP55A8F2100046

Verify if the vehicle is affected by the safety recall:

Confirm the recall status by checking the vehicle identification number (VIN), which is located on the right side of the steering head, against the Vehicle Master in Suzuki Connect to see if the Fuel Tank Breather Hose needs to be replaced. If you have a question regarding motorcycle eligibility, contact your Suzuki Technical Service Manager or call Tech-Line at (714) 996-7480.

What your dealership will do:

- 1) Inspect Fuel Tank Breather Hose No. 1 and inspect the frame for paint damage.
- 2) Replace Fuel Tank Breather Hose No. 1, and if necessary, the fuel tank. It may also be necessary to touch-up contact points on the frame with paint.

NOTE:

You must obtain prior authorization from your Suzuki Technical Service Manager (TSM) to replace the fuel tank; you must also provide your TSM with the VIN for the affected unit.

- 3) Submit a warranty claim.

What Suzuki Motor of America, Inc., will do:

During the week of January 4, 2016, Suzuki Motor of America, Inc., will mail notification letters to owners of affected motorcycles for whom we have information. The letter instructs the customer to contact a Suzuki dealer to schedule an appointment for the repair.

If you have sold an affected vehicle to a customer prior to receiving this bulletin and have not made the repair, please contact the customer immediately to arrange for the motorcycle to be returned to your dealership for this Safety Recall Campaign.

Ordering parts for the Safety Recall Campaign:

- 1) The Fuel Tank Breather Hose No. 1 set is available for order through Suzuki Connect using one of the two shipping methods listed below. (See *Parts Bulletin No. PA15-34* for more details.)
 - Daily Stock (freight prepaid)
 - Critical Order (surcharge applies based on the shipping method selected)
- 2) Each part on the order must be placed on a separate line, along with the last 9 digits of the VIN entered into the memo field.
- 3) Suzuki's Parts Department will verify that the VIN is affected by the recall campaign. Following verification, the order will be processed. The VIN entered on the parts order form will be displayed in the Sales Order Comments field on the packing list.

<input checked="" type="radio"/> Enter Order Number <input type="text" value="12345"/>		<input type="radio"/> List of Saved Order Numbers	
Order Type <input type="text" value="Daily Stock"/>			
Total Amount		Total Qty	
Part Number	Qty	Memo	Description
<input type="text" value="44420-44810-RX0"/>	<input type="text" value="1"/>	<input type="text" value="4D2100803"/>	
<input type="text" value="44420-44810-RX0"/>	<input type="text" value="1"/>	<input type="text" value="8F2100046"/>	← Last 9 Digits of VIN

NOTE:

Due to campaign parts being on restricted release, pending verification of the VIN, the campaign parts may be listed as "BO" when checking Parts Availability on Suzuki Connect.

If you have questions regarding your parts order, please contact National Parts Coordination at (714) 854-2165.

PARTS ORDERING INFORMATION		
Part Name	Part Number	Qty. Required
Hose Set, Fuel Tank Breather No. 1	44420-44810-RX0	1

4) To order a fuel tank assembly:

- A) Contact your TSM for prior authorization.
- B) Provide your TSM with your Suzuki Dealer Number, the VIN of the affected motorcycle and the fuel tank assembly part number.
- C) Your TSM will order the fuel tank for your dealership by sending the order to Parts@suz.com.

ADDITIONAL PARTS ORDERING INFORMATION (IF NEEDED)		
Part Name	Part Number	Qty. Required
Tank Assy, Fuel (Blue)	44100-44H31-YKY	1
Tank Assy, Fuel (Black)	44100-44H31-YVB	1
Fuel Tank Set Tape, Heat Shield (1) Protector, Wiring Harness (1) Label, General Warning (1) O-Ring, Fuel Pump (1) Fastener, Frame Cover (2)	44190-44820-RX0	1

Warranty Claim Processing:

Submit a warranty claim for each Fuel Tank Breather Hose No. 1 Recall Campaign service immediately upon completion. This campaign requires you to file a warranty claim using ONE of the methods described on the following page.

Suzuki Connect Short Campaign Claim:

NOTE:

The Short Campaign Claim will reimburse you only for the breather hose replacement parts and labor (0.4 hours).

FUEL TANK BREATHER HOSE RECALL CAMPAIGN SUZUKI CONNECT SHORT FORM INSTRUCTIONS	
CLAIM INFORMATION	
CLAIM NUMBER:	XXXXX.X (Dealer enters number)
ENTRY TYPE (Dealer chooses):	VIN, Model/Frame, or Control
REPAIR DATE:	Enter date of repair
MILEAGE:	Enter mileage at repair date
CAMPAIGN NUMBER:	2A49

Suzuki Connect Long Campaign Claim:

The Long Campaign Claim entry should be used when additional parts or labor, such as the fuel tank, are required to complete the Recall Campaign service. **A Long Form Claim requires TSM authorization.**

FUEL TANK BREATHER HOSE RECALL CAMPAIGN SUZUKI CONNECT LONG FORM INSTRUCTIONS

CLAIM INFORMATION:

CLAIM NUMBER: XXXXX.X (Dealer enters number)
 ENTRY TYPE: VIN, Model/Frame or Control (Dealer chooses)

REPAIR DATE: Enter date of repair
 MILEAGE: Enter mileage at repair date
 CAMPAIGN NUMBER: 2A49
 LABOR OPERATION: DH9999
 LABOR TIME: Fuel Tank Breather Hose, Fuel Tank 0.8 HR
 (Includes any frame paint touch-up required)

PARTS INFORMATION

REPLACEMENT PART: 44420-44810-RX0

ADDITIONAL PARTS: AS AUTHORIZED

AUTHORIZATION: REQUIRED
 SUBLET: NONE

FAILURE DESCRIPTION:

DESCRIPTION OF DEFECT: SFV650 Fuel Tank Breather Hose Replacement
 DESCRIPTION OF REPAIR: Performed recall repair as required per Service Bulletin

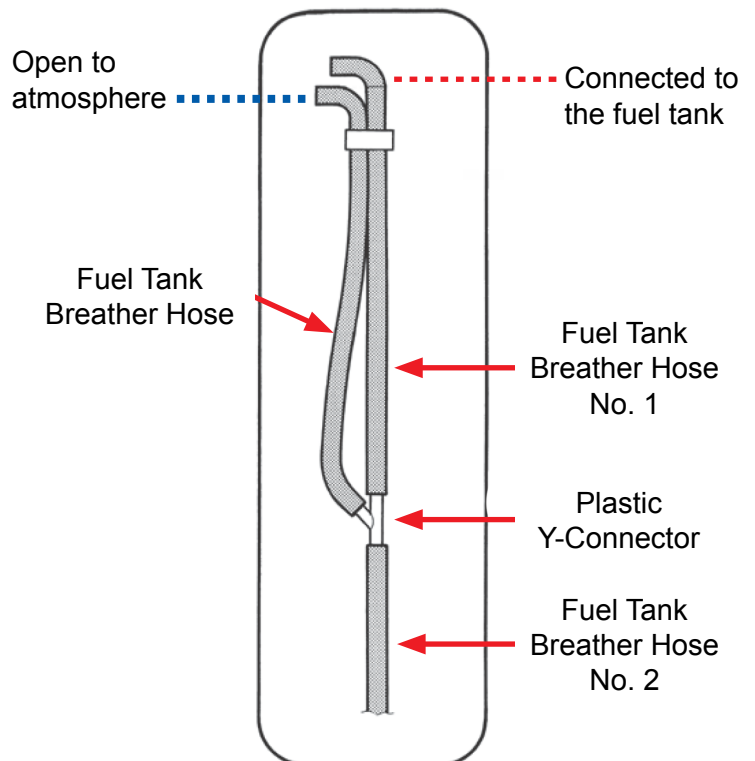
SPECIAL NOTE BEFORE PROCEEDING:

The three hoses mentioned in the following procedure are connected with a Y-Connector:

The Fuel Tank Breather Hose is open to the atmosphere.

Fuel Tank Breather Hose No. 1 is connected to the bottom of the fuel tank.

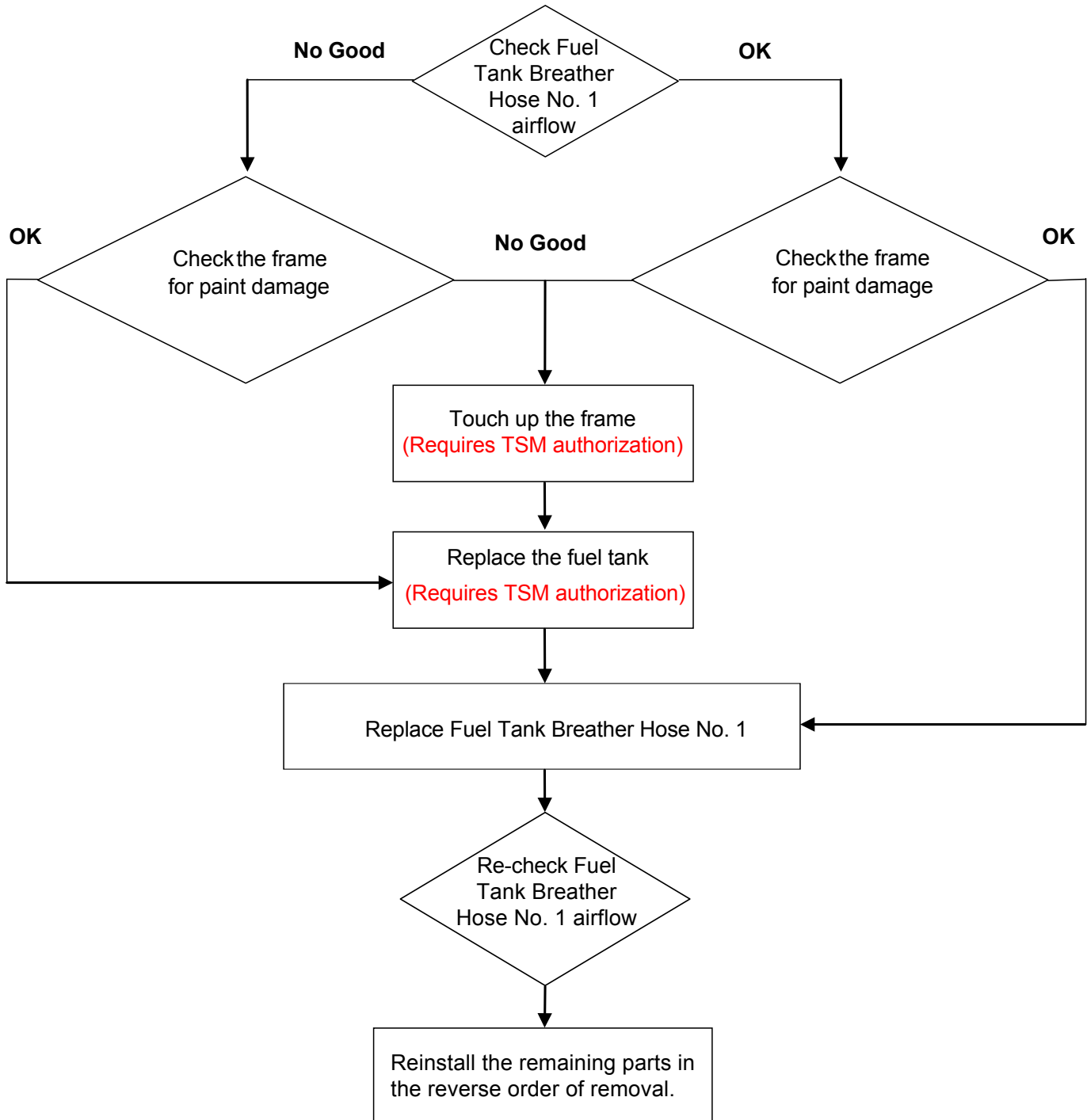
Fuel Tank Breather Hose No. 2 is routed to the bottom of the motorcycle.



INSPECTION PROCEDURE

Flow Chart:

Depending on the condition of Fuel Tank Breather Hose No. 1 and the frame, you may need to replace the fuel tank and touch up the paint on the contact points of the frame. Carefully review the flow chart below, then follow the inspection procedures on the following pages.

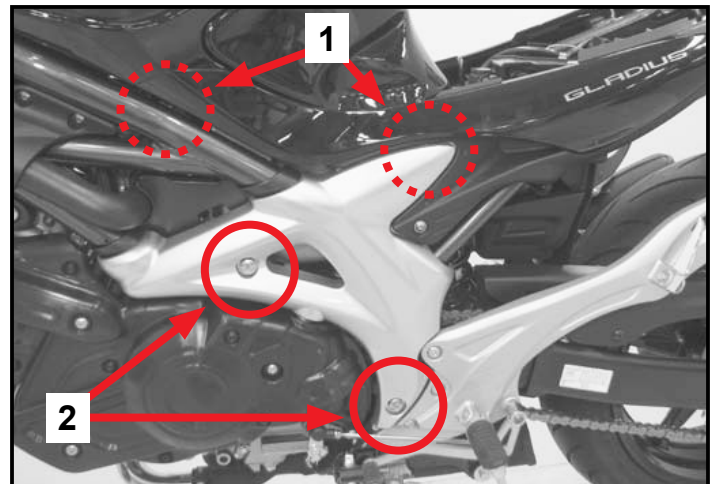
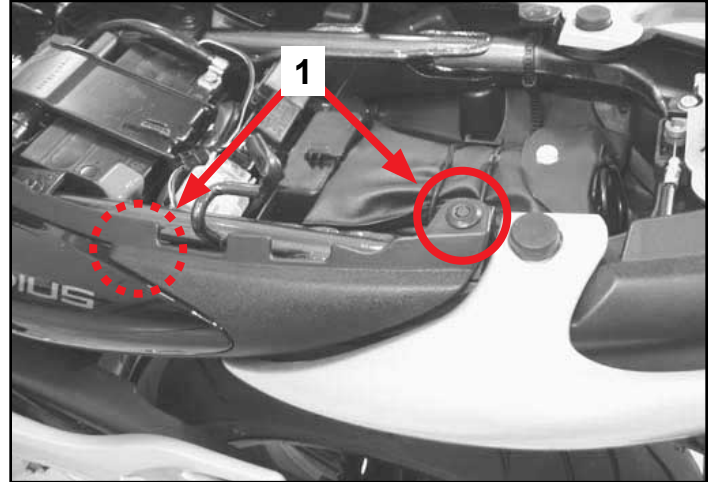


Fuel Tank Breather Hose No. 1 Airflow:

NOTE:

Do not remove the fuel tank while inspecting the airflow in Fuel Tank Breather Hose No. 1.

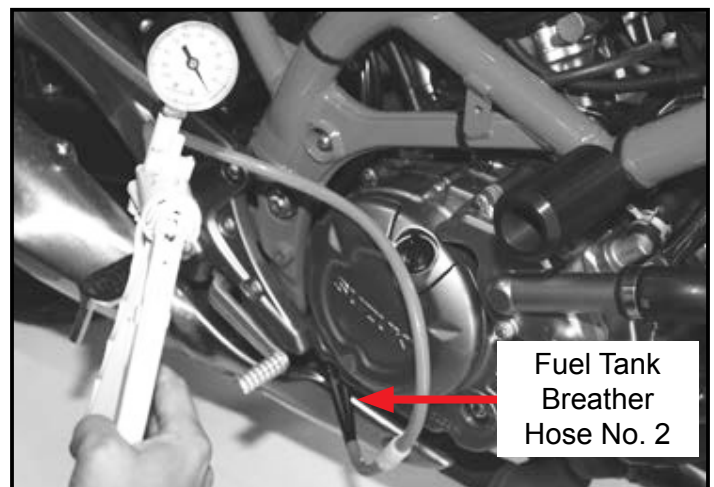
- 1) Unlock and remove the seat.
- 2) Remove the left side and right side frame covers by removing the fasteners (1) and bolts (2).
- 3) Open the fuel tank cap.



NOTE:

*To correctly inspect Fuel Tank Breather Hose No. 1, the Fuel Tank Breather Hose (this is a SEPARATE HOSE) must be pinched closed. **Please pay special attention to the following instructions.***

- 4) Install a vacuum pump on the end of Fuel Tank Breather Hose No. 2 — see the illustrations on the following page.



- 5) Wrap protective tape around the tip of needle-nose pliers. Then use the pliers to pinch the Fuel Tank Breather Hose closed while operating the vacuum pump to check the airflow of Fuel Tank Breather Hose No. 1.

NOTICE

Squeezing the Fuel Tank Breather Hose too tightly with the needle nose pliers may damage the hose.

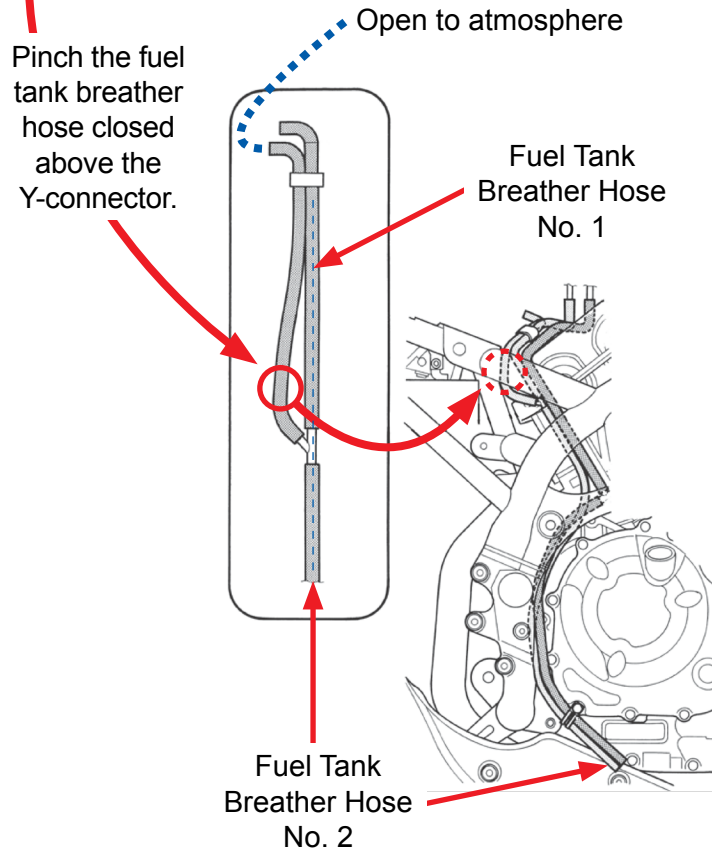
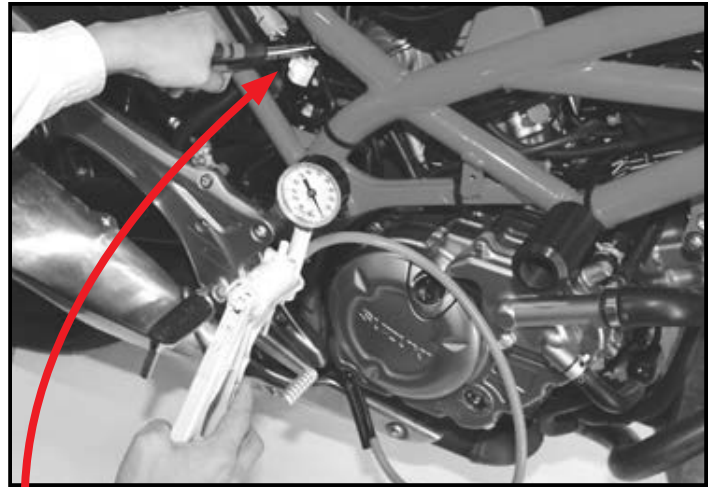
Be careful not to crush the Fuel Tank Breather Hose.

- 6) Attach the vacuum pump to Fuel Tank Breather Hose No. 2 and begin pumping the vacuum pump.

If you do NOT feel any resistance in the pumping handle of the vacuum pump, there is no obstruction in Fuel Tank Breather Hose No. 1. (If the vacuum pump has a gauge, there should be NO indication of any vacuum while pumping.)

If you DO feel resistance in the handle of the vacuum pump or if the gauge indicates vacuum, there is an obstruction in Fuel Tank Breather Hose No. 1.

Next, inspect the frame contact points as outlined on the following page.



Fuel Tank Breather Hose No. 2 is the smaller of the two hoses in this location.

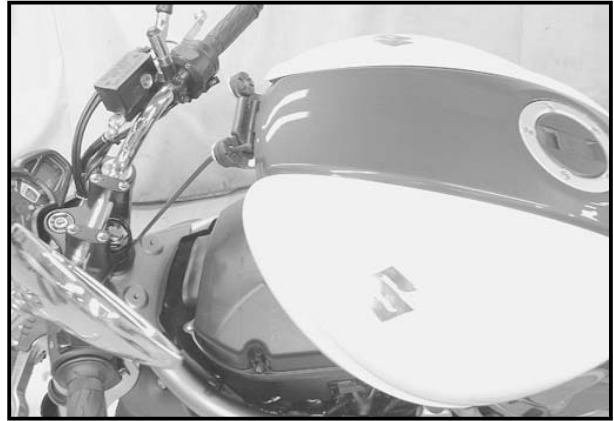
IMPORTANT NOTE!

The Y-connector may not be in the same position as the diagram shown above.

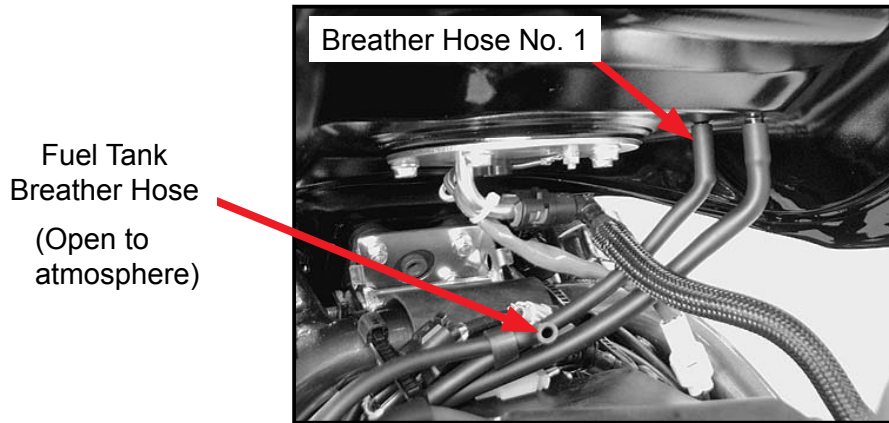
Be sure to pinch the fuel tank breather hose that is above the Y-connector where it protrudes at an angle. Otherwise, the vacuum pump will draw air through this hose and your inspection will not be accurate.

Frame Contact Points:

- 1) Remove the fuel tank mounting bolts, then carefully lift up the front of the tank and support it with a support rod.



- 2) Disconnect Fuel Tank Breather Hose No. 1 and the Fuel Tank Breather Hose.

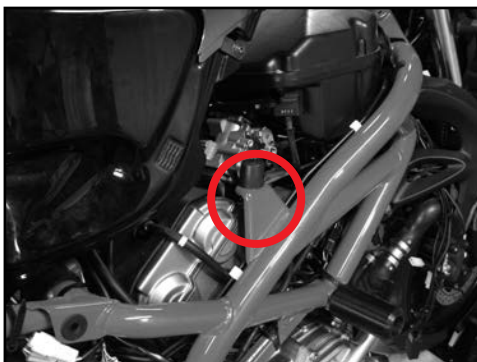


- 3) Check the contact points on the frame to see if the paint needs to be touched-up.

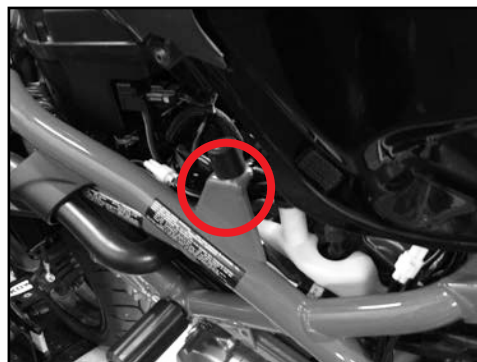
NOTE:

If the paint on the frame is damaged, the fuel tank needs to be replaced, even if Fuel Tank Breather Hose No. 1 passed the inspection.

Frame
Left Side



Frame
Right Side



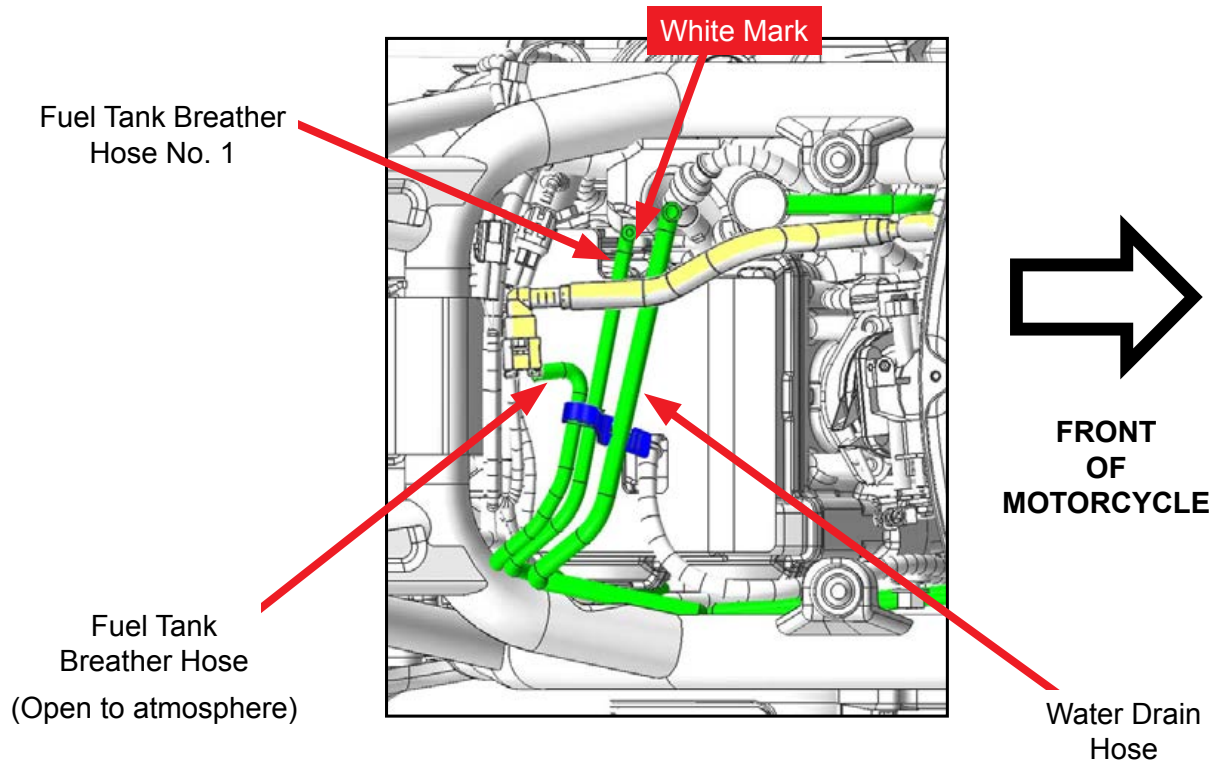
REPAIR PROCEDURES

To replace Fuel Tank Breather Hose No. 1:

Refer to *Fuel System, Section 1G-7* of the 2013-2015 SFV650 Service Manual.

NOTE:

- The white mark on the new Fuel Tank Breather Hose No. 1 should face toward the front of the motorcycle.
- Fuel Tank Breather Hose No. 1 and the Fuel Tank Breather Hose should be routed under the Fuel Feed Hose from the fuel tank to the right side of the motorcycle.
- After installing the new Fuel Tank Breather Hose No. 1, remove the fuel tank prop and lower the fuel tank. Then check the new Fuel Tank Breather Hose No. 1 with the vacuum pump for proper airflow.



To replace the fuel tank:

Refer to *Fuel System, Section 1G-6 through 1G-7* of the Service Manual.

NOTE:

While replacing the fuel tank, you will need to refer to Section 1G-9 for replacing the fuel pump.

Be sure to install the new heat shield (which comes with the new fuel tank) on the under-side of the tank.



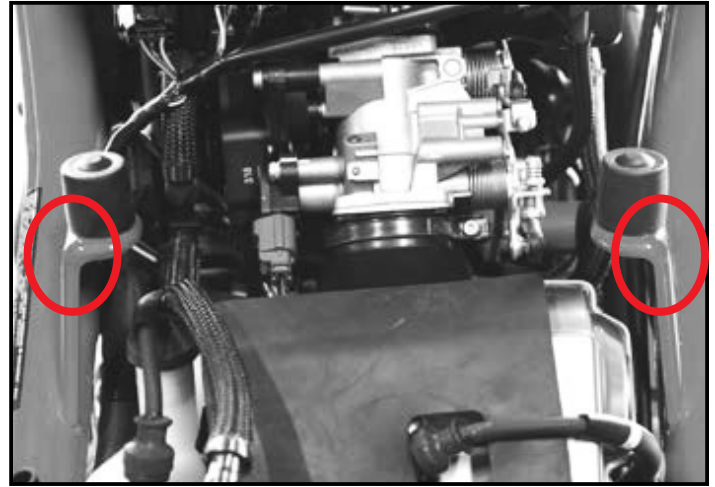
Touch-up the frame contact points:

Completely remove the fuel tank and touch up the frame contact points with YVB (black) paint on the locations shown to the right.

If you need paint, contact Color Rite and reference Suzuki color YVB black.

Then contact Suzuki's Warranty Department for instructions for submitting a separate claim for reimbursement.

*NOTE:
Only one claim per dealer will be accepted for touch-up paint.*



Suzuki Warranty Department
(714) 996-7480 Option 4

Color Rite

www.colorrite.com

West Coast Office

(800) 736-7980
(661) 266-9471

East Coast Office

(800) 358-1882
(610) 588-7355



SUZUKI MOTOR OF AMERICA, INC.

IMPORTANT SAFETY RECALL

This Notice Applies to Your Suzuki Vehicle Identification Number (VIN)
XXXXXXXXXXXXXXXXXXXX

January 4, 2015

Dear Suzuki Owner:

This notice is sent to you in accordance with the requirements of the National Traffic and Motor Vehicle Safety Act.

Suzuki Motor Corporation has decided that a defect which relates to motor vehicle safety exists in certain 2013 and 2015 model year SFV650 motorcycles.

What is the problem?

During assembly, Fuel Tank Breather Hose No. 1 may not have been positioned properly under the fuel tank, and the hose may be kinked. If the hose is kinked, airflow through the hose is restricted and the internal pressure of the tank can become abnormally high or low, causing the tank to deform and possibly crack. If the fuel tank develops a crack, a fuel leak can occur, increasing the risk of a fire.

What is Suzuki Motor of America, Inc., doing to solve the problem?

Your dealer will replace Fuel Tank Breather Hose No. 1 and, if necessary, the fuel tank. This procedure will take approximately 1 hour to complete. Parts are available now, and there will be no charge to you for any recall service-related parts or labor.

What you should do:

Make sure you are prepared for the recall service by taking the following steps:

- Before taking your motorcycle to your dealer, contact them as soon as possible to make an appointment for the recall service.
- Be sure to provide your dealer with your motorcycle's VIN so they can order the necessary parts for the repair.
- Please take this letter to your dealer to help your dealer process your claim.

What to do if you receive this letter in error:

This notice was mailed to you according to the latest information that is available to us. If you no longer own the Suzuki motorcycle described in this letter, please complete and return the enclosed Change of Address/Ownership card to Suzuki Motor of America, Inc., and forward this recall information to the current owner (if known).

Federal regulations require that any vehicle lessor receiving this recall notice must forward a copy of this notice to the lessee within ten days.

Customer reimbursement for prior fuel tank replacement or other repairs related to this safety recall:

If your motorcycle is included in this recall and you have paid for replacement of the fuel tank or other repairs related to improper assembly of the Fuel Tank Breather Hose No. 1, you may be eligible for full or partial reimbursement.

Please note the following conditions for reimbursement:

- Only repairs made to address the defect that led to this recall are reimbursable. Additional expenses such as towing, car rental, accommodations, damage repairs, etc., will not be reimbursed. Reimbursement will not be provided for routine scheduled maintenance.
- Reimbursement may be limited to the suggested list price for parts, the Suzuki published flat rate time allowance for the repair, and the labor rate that an authorized Suzuki dealer in the same area would charge for the same repair.
- An owner will not be eligible for reimbursement if the expenses for repairs are incurred more than 10 days after the date of the last owner notification letter sent by Suzuki Motor of America, Inc.
- Reimbursement claims may also be excluded when adequate documentation is not submitted by the claimant. This includes proof of ownership, a repair order, and proof of payment for the repair.

To request reimbursement for a previous repair, contact your Suzuki Motorcycle Dealer.

Who to contact if you experience problems:

Your Suzuki dealer can provide you the fastest response to your questions or concerns about the SFV650 Fuel Tank Breather Hose No. 1 Safety Recall. If you have any difficulty with this recall campaign, you may contact the Suzuki Motor of America, Inc., Customer Service Department for assistance at (714) 572-1490 during the hours of 7:00 AM to 4:30 PM Pacific Time. Please have your vehicle identification number (VIN) ready when calling.

If you need to locate your nearest Suzuki Motorcycle Dealer, please visit www.suzukicycles.com and click on the "FIND A DEALER" tab, which is located in the upper right corner of our website.

If you believe that Suzuki Motor of America, Inc., has failed to provide the recall service without charge or is unable to do so within a reasonable time, you may submit a complaint to the Administrator of the National Highway Traffic Safety Administration, 1200 New Jersey Ave., S.E., Washington D.C., 20590 or call the toll-free Vehicle Safety Hotline at 1-888-327-4236 (TTY: 1-888-424-9153) or go to: www.safercar.gov

We apologize for any inconvenience this recall campaign causes you. We hope you understand that your safety and satisfaction are important priorities for us.

Sincerely,

Suzuki Motor of America, Inc.