

TO: Mercedes-Benz Dealer Principals, General Managers, Sales Managers, Service Managers, Parts Managers	FROM: Gregory Gunther, Senior Manager, Vehicle Compliance and Analysis, Engineering Services
RE: Service Campaign Launch Notification Rework Connector Assignment in Trunk Fuse and Relay Module MY22 SL (232 platform)	DATE: October 20, 2023

IMPORTANT SERVICE CAMPAIGN LAUNCH

Please note that all customer inquiries should be directed to the Customer Assistance Center at 1-800-FOR-MERCEDES (1-800-367-6372).

Sincerely,

Gregory Gunther

Senior Manager, Vehicle Compliance & Analysis



Service Campaign Launch Notification		October 20, 2023
Campaign No. :	Campaign Desc. :	Rework Connector Assignment in Trunk Fuse and Relay Module
2023100003	23P5490213	
<p>This is to notify you of the Service Campaign Launch to rework the connector assignment in the trunk fuse and relay module, if necessary, in 876 Model Year (“MY”) 2022 SL (232 platform) vehicles. The vehicles will be visible and flagged in VMI as “OPEN” on October 20, 2023.</p>		
Background		
Issue	Mercedes-Benz AG (“MBAG”), the manufacturer of Mercedes-Benz vehicles, has determined that on certain MY 2022 SL (232 platform) vehicles, after a longer non-operational time of greater than 42 days or with a battery charge of less than 45%, the following battery fault message might display in the instrument cluster: “Stop Vehicle See Operator's Manual, Switch on vehicle to charge the 12 V battery, or Stop vehicle To charge the 12 V battery do not switch off vehicle.”	
What We're Doing	MBUSA will conduct a service campaign. An authorized Mercedes-Benz dealer will rework the connector assignment in the trunk fuse and relay module to make the vehicle ready for an external charger in cases of prolonged non-operational use.	
Parts	The remedy is available and can be performed as necessary.	
Vehicles Affected		
Vehicle Model Year(s)	2022	
Vehicle Model	SL	
Vehicle Populations		
Total Campaign Population	876	
Next Steps/Notes		
AOMS/SOMS	AOMs - This campaign may generate questions from your dealers.	
<p>While we regret any inconvenience this may cause, MBUSA is determined to maintain a high level of vehicle quality and customer satisfaction. Please refer all customer inquiries to the Customer Assistance Center at 1-800-FOR-MERCEDES.</p>		



Service Campaign Bulletin



Mercedes-Benz

Campaign No.2023100003, October 2023

TO: ALL MERCEDES-BENZ CENTERS

SUBJECT: **Model SL (232 platform)**
Model Year 2022

Rework Connector Assignment in Trunk Fuse and Relay Module

Mercedes-Benz AG ("MBAG"), the manufacturer of Mercedes-Benz vehicles, has determined that on certain MY 2022 SL (232 platform) vehicles, after a longer non-operational time of greater than 42 days or with a battery charge of less than 45%, the following battery fault message might display in the instrument cluster: "Stop Vehicle See Operator's Manual, Switch on vehicle to charge the 12 V battery, or Stop vehicle To charge the 12 V battery do not switch off vehicle." An authorized Mercedes-Benz dealer will rework the connector assignment in the trunk fuse and relay module to make the vehicle ready for an external charger in cases of prolonged non-operational use.

Prior to performing this Campaign:

- **VMI must be checked before performing campaigns to verify that the campaign is required on a specific vehicle. Always check for any other open campaigns, and perform accordingly.**
- Please review the entire Campaign bulletin and follow the repair procedure exactly as described.

Approximately 876 vehicles are affected.

Order No. P-SC-2023100003

Service Campaign Bulletin

Service Campaign Bulletin

Service Campaign Bulletin

Service Campaign Bulletin

Service Campaign Bulletin

Rework Connector Assignment in Trunk Fuse and Relay Module

Work Procedure A

1. Disconnect battery ground line for 12 V on-board electrical system.
i For basic data, see AR54.10-P-0051SLY.
2. Remove right seat backrest in rear.
i For basic data, see AR91.12-P-1713SLY.
3. Release fuse and relay module (**Figure 1**) and fold forward with connected lines.
i For basic data, see AR91.12-P-1713SLY.

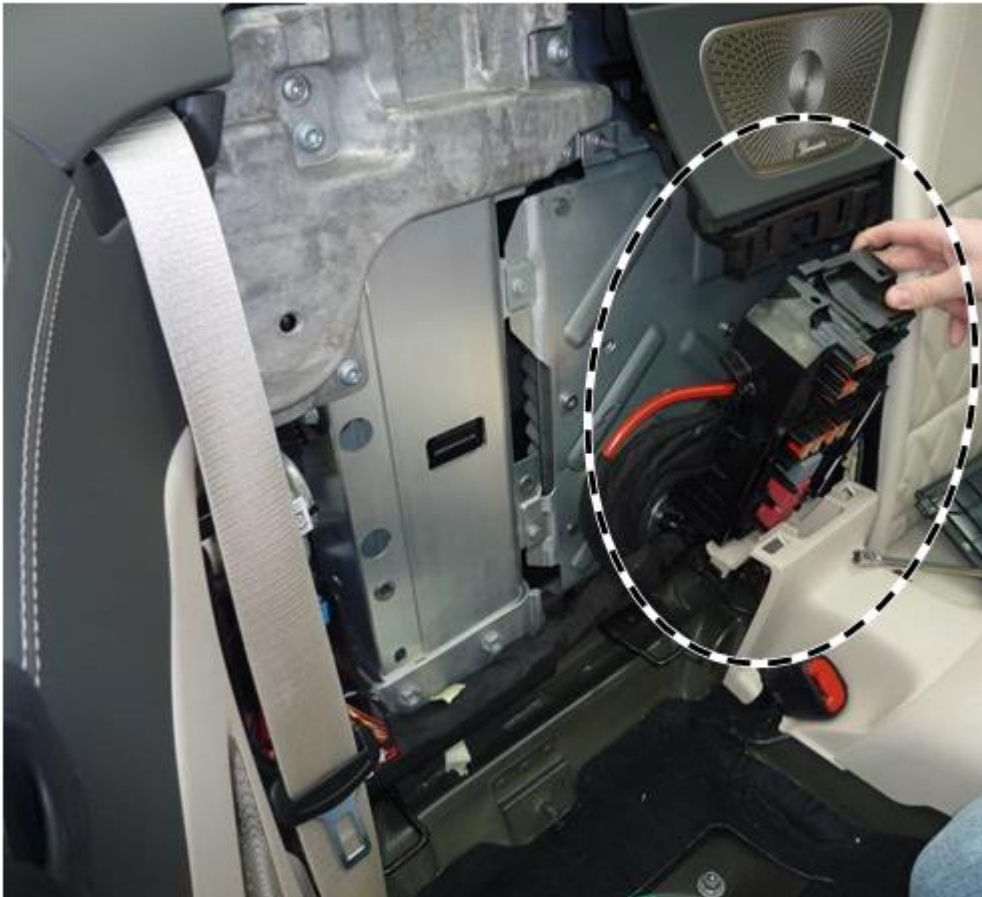


Figure 1

4. Remove both cable ties (1, Figure 2).

i Cable ties (1, Figure 2) must be replaced after the modification.



Figure 2

5. Release plug S1 (green) and disconnect from fuse and relay module.

i Pry lock (2, Figure 3) upwards with screwdriver.

i Press locking tab (3, Figure 3) towards plug with screwdriver.

i Partially open fabric tape of disconnected wiring harnesses, and re-wrap after modification.

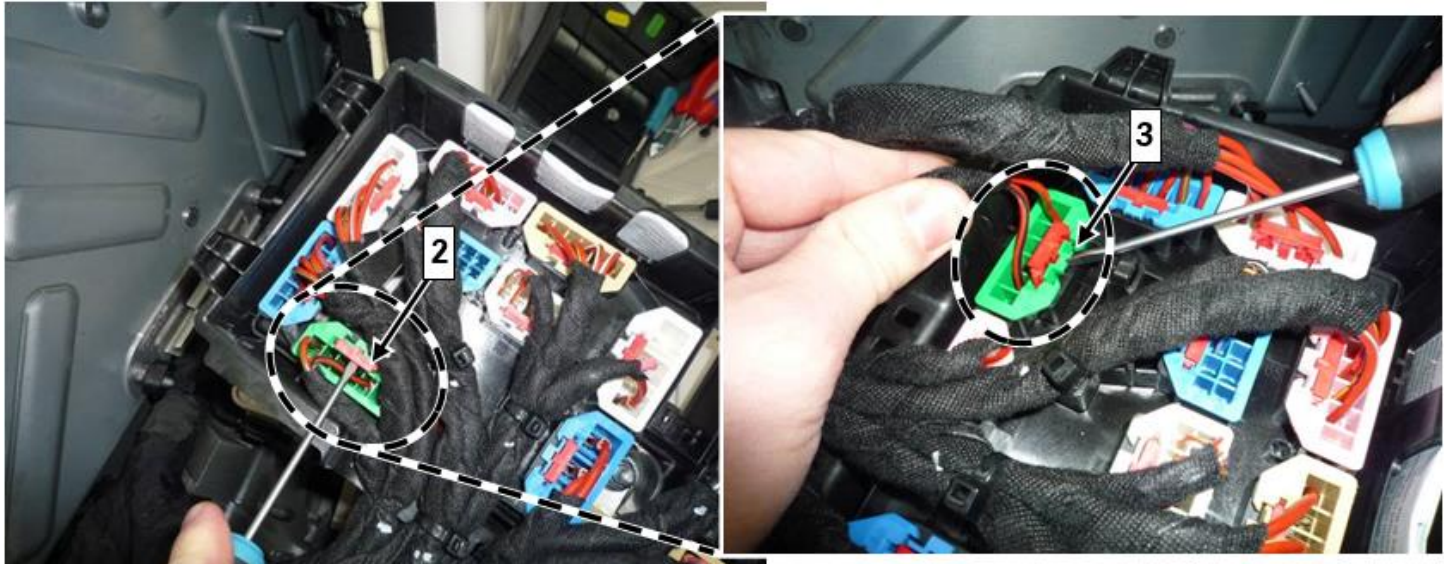


Figure 3

6. Release plug S5 (**white**) and disconnect from fuse and relay module.

i Pry lock (**4, Figure 4**) upwards with screwdriver.

i Press lock tab (**5, Figure 4**) towards plug with screwdriver.

i Partially open fabric tape of disconnected wiring harnesses, and re-wrap after modification.



Figure 4

7. Disconnect line (red/black) from plug S1 **Pin2** (green) (**Figure 5**).

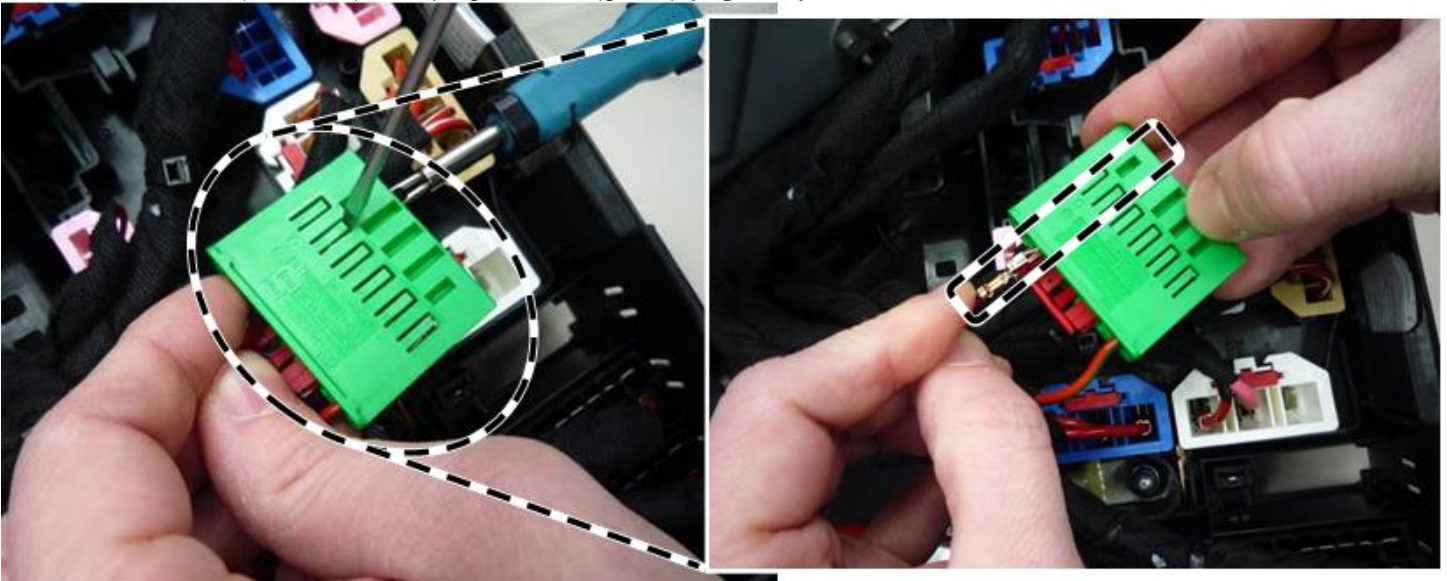


Figure 5

8. Relocate line (red/black) to plug S5 in **Pin5** (white) (**Figure 6**).

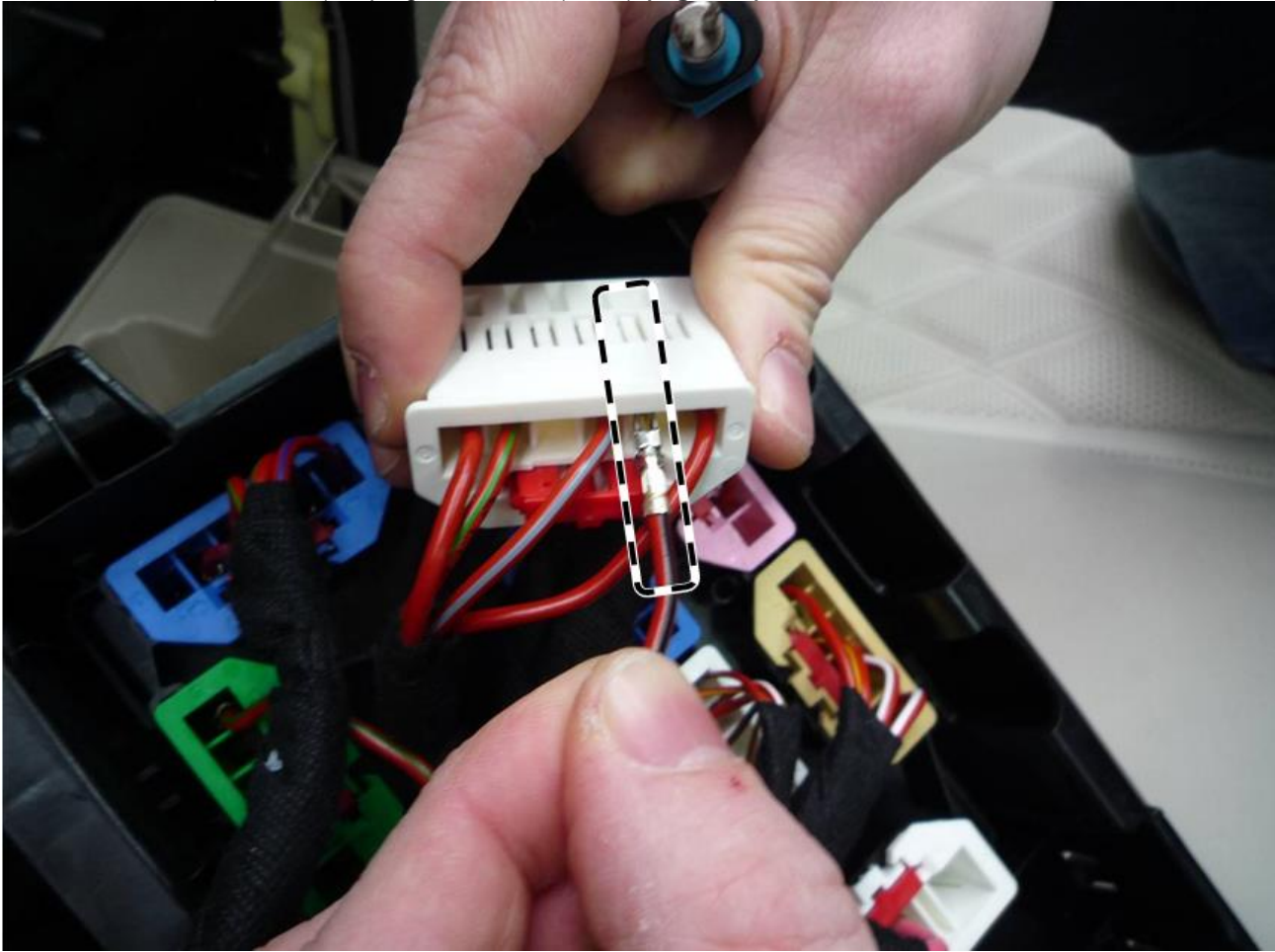


Figure 6

9. Connect plug S1 (**green**) and plug S5 (**white**) to the fuse and relay module (**Figure 7**).

i Wrap fabric tape around both branch-off lines

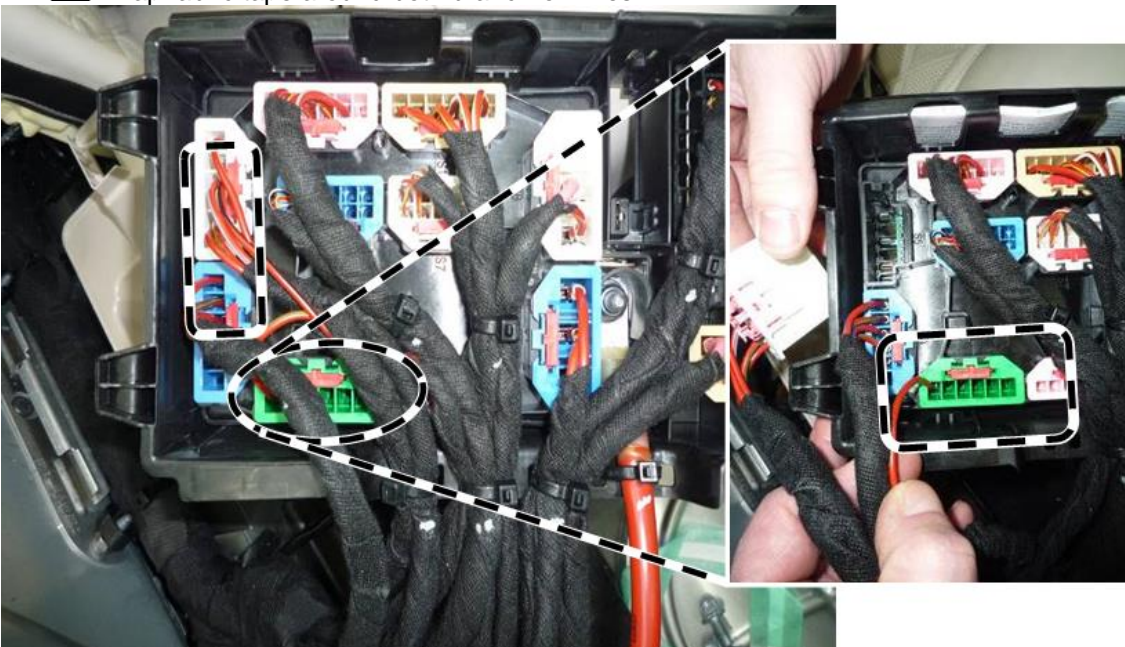


Figure 7

11. Assemble in reverse order.

12. Check charging function via socket in trunk (Figure 10).

i For this, remove key from vehicle and connect trickle charger. The charge indicator lamp must light up.



Figure 10

13. Replace fuse data sheet (Figure 11).



Figure 11

Primary Parts Information

Qty.	Part Name	Part Number
1	Fuse data sheet	A 232 584 41 02

The replacement parts must be determined according to the equipment variant for the vehicle identification number via the parts process in the Xentry Portal.

i Small parts such as screws, lock nuts, sealing rings, cable ties, fluids, sealant, etc. are not listed in the parts list. The required small parts are taken into account in the budgeting.

i **Note:** The following allowable labor operation should be used when submitting a warranty claim for this repair:

Warranty Information

Damage Code	Operation Number	Description	Labor Time (hrs.)
54 902 13	12-1697	Rework assignment of connector in fuse and relay module Includes: Correct assignment of connector in fuse and relay module and replace fuse data sheet	0.9

i **Note:** Always check Xentry Operation Time (XOT) for the current OP-Code times. Labor times are subject to change and updates may not be reflected in this document.