

GLOBAL SAFETY FIELD INVESTIGATIONS
DCS5567
URGENT - DISTRIBUTE IMMEDIATELY

Date: November 12, 2020

Subject: N202316880 - Service Update
Transmission Control Module (TCM) Software Error/Mismatch

Models: 2020 Chevrolet Corvette

To: All General Motors Dealers

General Motors is releasing Service Update N202316880 today. The total number of U.S. vehicles involved is approximately 11,865. Please see the attached bulletin for details.

Global Warranty Management (GWM)

The Required Field Action section on the Investigate Vehicle History (IVH) screen will be updated November 13, 2020 or sooner. A list of involved vehicles in dealer new inventory is attached to this message. Please hold all warranty transactions until IVH has been updated.

END OF MESSAGE

GLOBAL SAFETY FIELD INVESTIGATIONS

Service Update

N202316880 Transmission Control Module (TCM) Software Error/Mismatch



Release Date: November 2020

Revision: 00

Attention: This service update includes vehicles in dealer inventory and customer vehicles that return to the dealership for any reason. This bulletin will expire at the end of the involved vehicle's New Vehicle Limited Warranty period.

Involved vehicles will be repaired either through dealer repairs as described in this bulletin or through over the air (OTA) programming. Dealers can and should perform the procedure in this bulletin on any vehicle with an "open" status on the Investigate Vehicle History (IVH) screen in GM Global Warranty Management system. Due to the fact that vehicles will be closed in IVH through successful OTA programming, dealers should always check the status in IVH before performing any vehicle repairs.

Make	Model	Model Year		RPO	Description
		From	To		
Chevrolet	Corvette	2020	2020		

Involved vehicles are marked "open" on the Investigate Vehicle History screen in GM Global Warranty Management system. This site should always be checked to confirm vehicle involvement prior to beginning any required inspections and/or repairs.

Condition	Certain 2020 model year Chevrolet Corvette vehicles may have a condition where diagnostic trouble codes (DTC's) P1967 and/or P1968 may falsely set in the transmission control module (TCM) due to an internal software misalignment.
Correction	GM will update the software in the TCM. Owners who have accepted applicable terms and conditions will have the opportunity to accept these software changes using wireless over-the-air (OTA) technology without having to bring their vehicle to a dealership. Alternatively, owners may have their vehicle serviced at a GM dealer to receive these software updates.

Parts

No parts are required for this repair.

Warranty Information

Labor Operation	Description	Labor Time	Trans. Type	Net Item
9105265*	Verified Module Software or Calibration Level: Module Is Programmed with Same Level Software or Calibration	0.2	ZFAT	N/A
9105266*	Transmission Control Module Reprogramming with SPS	0.5		

*** Important:** To avoid warranty transaction rejections, carefully read and follow the instructions below:

- The Warranty Claim Code must be accurately entered in the "Warranty Claim Code" field of the transaction.
- When more than one Warranty Claim Code is generated for a programming event, it is required to document all Warranty Claim Codes in the "Correction" field on the job card. Dealers must also enter one of the codes in the "Warranty Claim Code" field of the transaction, otherwise the transaction will reject. It is best practice to enter the FINAL code provided by SPS/SPS2.

Warranty Claim Code Information Retrieval

If the Warranty Claim Code was not recorded on the Job Card, the code can be retrieved in the SPS system as follows:

1. Open TLC/TIS on the computer used to program the vehicle.
2. Select and start SPS/SPS2.
3. Select Settings.
4. Select the Warranty Claim Code tab.

The VIN, Warranty Claim Code and Date/Time will be listed on a roster of recent programming events. If the code is retrievable, dealers should resubmit the transaction making sure to include the code in the SPS Warranty Claim Code field.

Service Update

N202316880 Transmission Control Module (TCM) Software Error/Mismatch



Service Procedure

Caution: Before downloading the update files, be sure the computer is connected to the internet through a network cable (hardwired). DO NOT DOWNLOAD or install the files wirelessly. If there is an interruption during programming, programming failure or control module damage may occur.

Note: Carefully read and follow the instructions below.

- Ensure the programming tool is equipped with the latest software and is securely connected to the data link connector. If there is an interruption during programming, programming failure or control module damage may occur.
- Stable battery voltage is critical during programming. Any fluctuation, spiking, over voltage or loss of voltage will interrupt programming. Install a GM Authorized Programming Support Tool to maintain system voltage. Refer to www.gmdesolutions.com for further information. If not available, connect a fully charged 12V jumper or booster pack disconnected from the AC voltage supply. DO NOT connect a battery charger.
- Ensure the ignition is turned OFF, load on the vehicle's battery such as; interior lights, exterior lights (including daytime running lights), HVAC, etc. may affect the download process.
- Clear DTCs after programming is complete. Clearing powertrain DTCs will set the Inspection/Maintenance (I/M) system status indicators to NO.

The screenshot shows the Techline Connect software interface. At the top, there is a navigation bar with 'DASHBOARD', 'GDS2', 'SI', and 'SPS2' tabs. The 'SPS2' tab is active. Below the navigation bar, there is a table titled 'Electronic Brake Control Module - Programming'. The table has columns for 'Controller', 'ID', and 'Current #'. The table contains the following data:

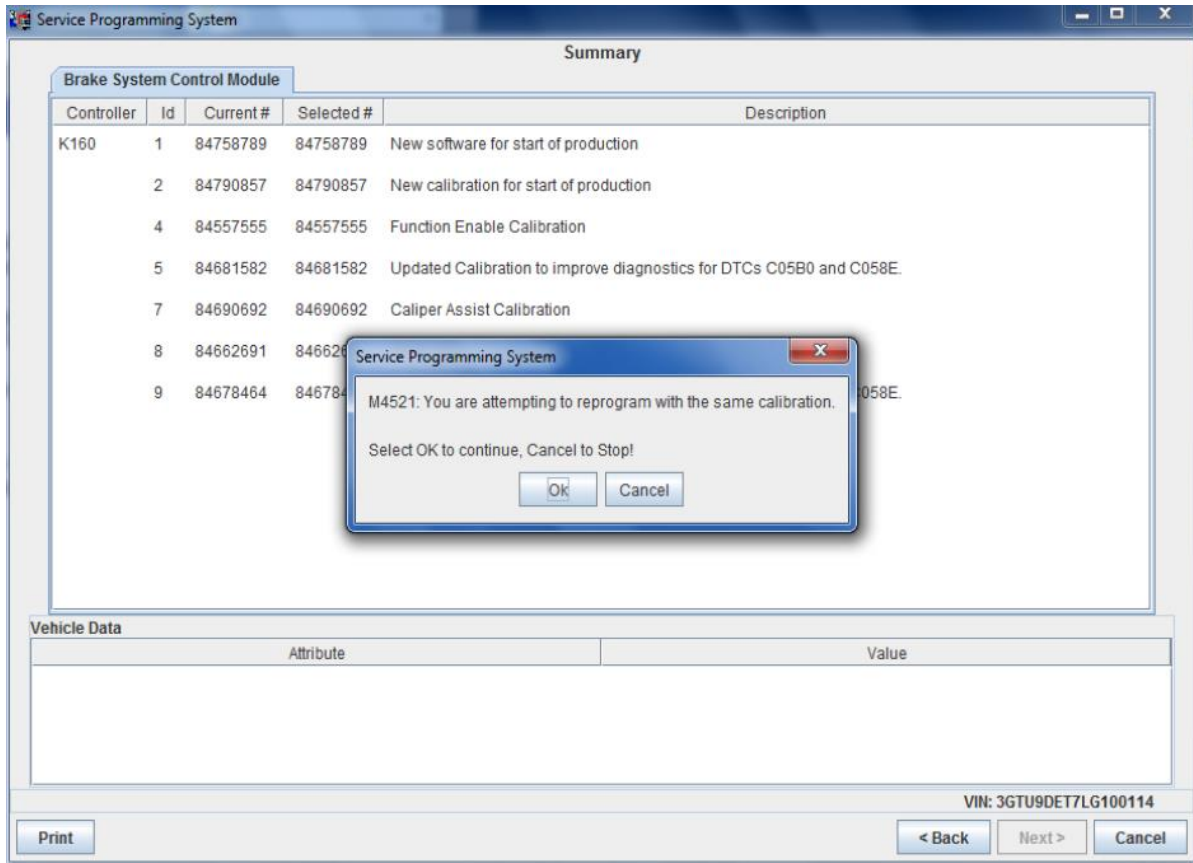
Controller	ID	Current #
K17	1	84820771
K17	2	84820790
K17	3	84820797
K17	4	84820801
K17	5	84820808
K17	6	84820819
K17	7	84820825

A warning dialog box is displayed over the table, with the following text: 'M4521: You are attempting to reprogram with the same calibration. Select OK to continue, Cancel to Stop!'. The dialog box has 'OK' and 'Cancel' buttons.

At the bottom of the interface, there are buttons for 'Print', 'Save to PDF', 'ECU Data', 'Back', 'Start Programming', and 'Cancel'. The VIN field is visible at the bottom right, containing the value '5644477'.

Service Update

N202316880 Transmission Control Module (TCM) Software Error/Mismatch



5431207

Important: Techline Connect and TIS2WEB screens shown above. The pictures above are an example of module reprogramming, and may not be indicative of the specific module you're reprogramming.

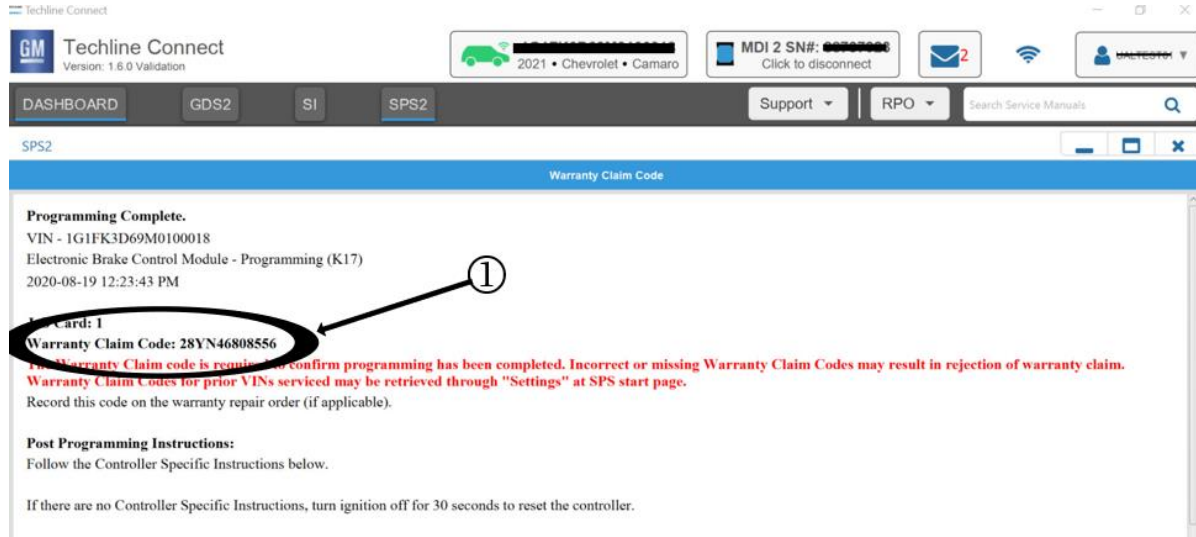
Important: If the same calibration/software warning is noted on the TLC or SPS Summary screen, select OK and follow screen instructions. After a successful programming event, the WCC is located in the Service Programming System dialogue box of the SPS Summary screen. No further action is required. Refer to the Warranty section of the bulletin.

Important: When programming a module in GM's new Vehicle Intelligence Platform, or VIP, the power mode (ignition) needs to be off or errors may occur. This involves the 2020 Chevrolet Corvette, Cadillac CT5 and CT4, as well as the upcoming full-size Chevrolet, GMC, Cadillac SUVs and Buick Envision. Serial Data Message Authentication also needs to have the ignition off.

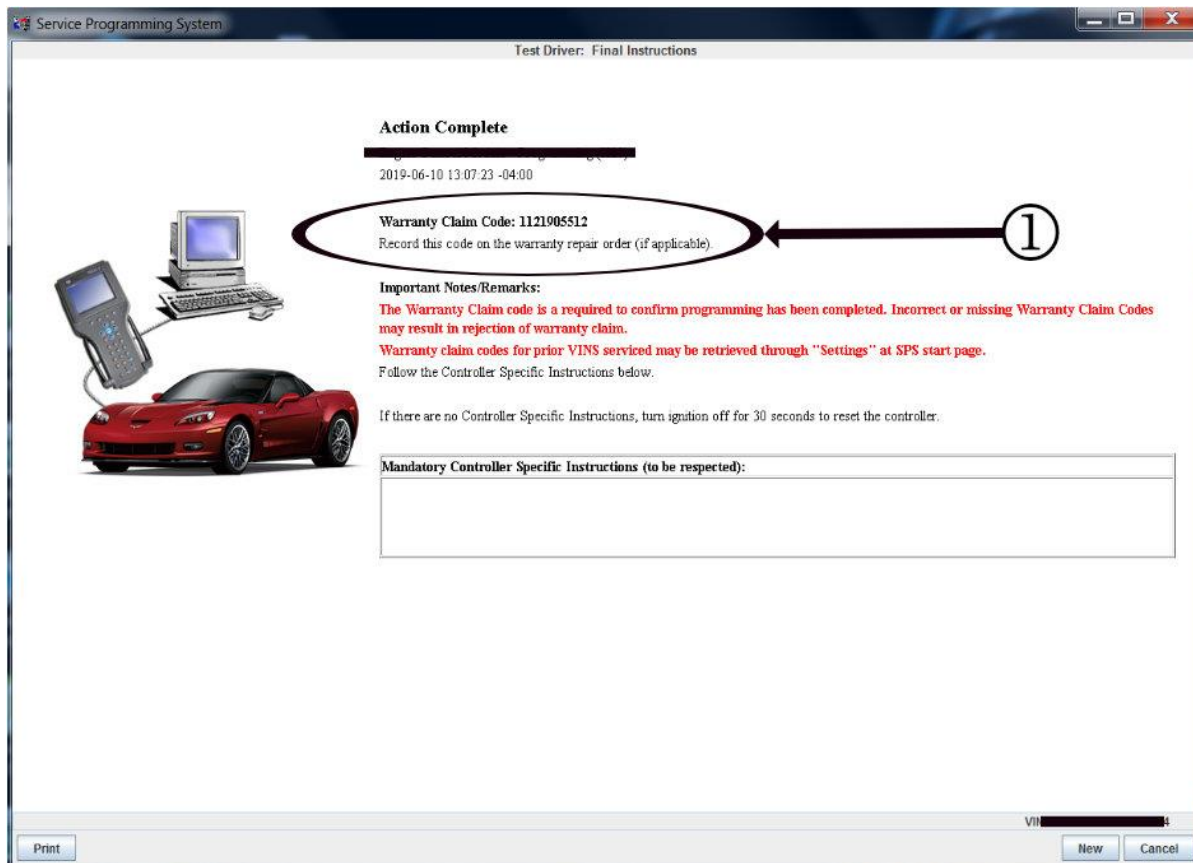
1. Reprogram the Transmission Control Module. Refer to *K71 Transmission Control Module: Programming and Setup* in SI.

Service Update

N202316880 Transmission Control Module (TCM) Software Error/Mismatch



5644478



5431209

Important: To avoid warranty transaction rejections, you **MUST** record the warranty claim code provided on the Warranty Claim Code (WCC) screen shown above on the job card. Refer to callout 1 above for the location of the WCC on the screen.

2. Record SPS Warranty Claim Code on job card for warranty transaction submission.

Service Update

N202316880 Transmission Control Module (TCM) Software Error/Mismatch



Dealer Responsibility

Whenever a vehicle subject to this service update enters your vehicle inventory or is in your facility for service in the future, and the vehicle is still covered under the New Vehicle Limited Warranty, you must take the steps necessary to be sure the service update correction has been made before selling or releasing the vehicle.

All new, used, GM Certified Used, courtesy transportation vehicles, dealer shuttle vehicles, etc. in dealers' possession and subject to this bulletin must be held and inspected/repaired per the service procedure of this bulletin before customers take possession of these vehicles. Involved vehicles must be held and not delivered to customers, dealer-traded, released to auction, used for demonstration, or any other purpose.

All GM Certified Used vehicles currently in the dealers' inventory within the Certified Pre-Owned Inventory System (CPOIS) will be de-certified and must be held and remedied per the service procedure in this bulletin. Upon submitting an accepted/paid warranty transaction in the Global Warranty Management (GWM) system, the vehicle can be re-certified for sale within the CPOIS system, or once again be used in the CTP program.

Dealer Reports

The Inventory tab of the Open Vehicle Report will contain Service Update Bulletin VINs that apply to this field action. This information is intended to assist dealers with the **PROMPT COMPLETION** of these vehicles. The Customer In-Service tab will not contain Service Update Bulletin VIN data because the intent of a Service Update Bulletin is to not inconvenience a customer with a special trip for service. Service Update Bulletins are to be completed when the customer is in for a regularly scheduled visit.

