

May 9, 2017

06404 Version 2

Safety Recall: 2015–16 CR-V Replacement Engine Short Block Out of Specification

AFFECTED VEHICLES

Year	Model	Trim	VIN Range
2015–16	CR-V	ALL	Check the iN VIN status for eligibility (fewer than 20 vehicles are affected).

BACKGROUND

A small number of replacement engine block assemblies may have been manufactured with the incorrect pistons. In a small number of cases (fewer than 20) where an original engine was already replaced in a vehicle, a direct injection engine block may have been replaced with an engine block with pistons designed for regular port injection. An engine block with the incorrect pistons installed may result in the MIL coming on or may result in engine damage.

CUSTOMER NOTIFICATION

Owners of affected vehicles will be sent a notification of this campaign.

Do an iN VIN status inquiry to make sure the vehicle is shown as eligible.

Some vehicles affected by this campaign may be in your new or used vehicle inventory.

Failure to repair a vehicle subject to a recall or campaign may subject your dealership to claims or lawsuits from the customer or anyone else harmed as a result of such failure. To see if a vehicle in inventory is affected by this recall, do a VIN status inquiry before selling it.

CORRECTIVE ACTION

Inspect the pistons and, if necessary, replace the cylinder block, cylinder head, the air fuel ratio sensor, the secondary heated oxygen sensor, and the front and floor catalytic converters.

REQUIRED MATERIALS

Part Name	Order Part Number	Quantity
Honda Bond HT (One tube repairs about 4 vehicles.)	08718-0004	1
Full Synthetic Oil	08798-9063	4
Coolant Type 2	OL999-9011	1

SPECIAL TOOLS

Part Name	Order Part Number	Quantity
Snap-on Borescope	BK5600	1

CUSTOMER INFORMATION: The information in this bulletin is intended for use only by skilled technicians who have the proper tools, equipment, and training to correctly and safely maintain your vehicle. These procedures should not be attempted by “do-it-yourselfers,” and you should not assume this bulletin applies to your vehicle, or that your vehicle has the condition described. To determine whether this information applies, contact an authorized Honda automobile dealer.

PARTS INFORMATION

Part Name	Part Number	Quantity
Cylinder Block Assembly	10002-5LA-A00	1
Cylinder Head Assembly	10003-5A2-A10	1
Cylinder Head Gasket	06110-5A0-A00	1
18 mm Drain Plug Washer	90471-PX4-000	1
Flange Bolt (8 x 14 mm) (AWD Only)	95701-08014-08	4
Bolt (12 point 8 x 21 mm) (AWD Only)	90113-S10-000	8
Flange Bolt (10 x 29 mm) (AWD Only)	90382-SH9-003	2
Self-Locking Nut (10 mm)	90212-SA5-003	11
Exhaust Pipe Gasket	18212-T2F-A01	1
Self-Locking Nut (8 mm) (Clinch)	90115-659-003	2
Pre Chamber Gasket (57.5 mm - 58.5 mm)	18393-SS0-J30	1
Converter	18150-5LA-A00	1
Exhaust Pipe Gasket	18302-SP0-003	1
Primary Converter Gasket (NIPPON LEAKLESS)	18115-5A2-A01	1
Air Fuel Ratio Sensor	36531-5A2-A01	1
Converter Bolt (YUTAKA)	18176-PT0-003	3
Flange Nut (8 mm)	94050-08080	2
Primary Converter	18190-5X6-J00	1
Spark Plug (DILKAR7G11GS) (NGK)	12290-5A2-A01	4
Fuel Injector Set (4 Pieces)	16010-5LA-305	1
Fuel Joint Pipe Set (MSDS INCLUDES VOC)	16012-5A2-315	1
O-Ring	91311-5A2-A01	1
Sealing Washer (12 mm)	16705-5A2-A01	2
Flange Nut (12 mm)	94050-12080	4
Split Pin (M14)	90701-SKC-003	2
Spindle Nut	90305-S3V-A11	2
Set-Ring (28 x 2.0 mm)	44319-S84-300	2
Flange Bolt (12 x 38 mm)	90162-SYP-000	2
Flange Bolt (12 x 88 mm)	90167-S5A-010	1
Flange Bolt (14 x 80 mm)	90163-SWE-T00	2
Flange Bolt (14 x 135 mm)	90176-SDA-A00	4
Flange Bolt (12 x 25 mm)	90182-S2H-000	2
Flange Bolt (12 x 35 mm)	90168-S5A-000	2
Flange Bolt (12 x 97 mm)	90165-S04-000	1
Flange Nut (14 mm)	90213-S5A-003	1

Flange Bolt (12 x 40 mm)	90161-T0A-A00	2
Flange Bolt (12 x 24 mm)	90160-T0A-A01	1
Flange Bolt (12 x 40 mm)	90164-S5A-010	1
Flange Nut (12 mm)	90371-SAA-010	2
Flange Bolt (12 x 35 mm)	90164-T0A-A00	1
Flange Bolt (12 x 40 mm)	90165-T0A-A00	2
Throttle Body Gasket	17107-R40-A01	1
Intake Manifold Gasket A	17115-5A2-A01	4
Oil Filter (FILTECH TOYO ROKI)	15400-PLM-A01	1
Thermostat Cover Seal (NIPPON THERMOSTAT)	19305-PNA-003	1
Thermostat Case Seal	19322-5A2-A00	1
Water Passage O-Ring (Water)	19411-5A2-A00	1
Water Passage O-Ring (Oil)	19412-5A2-A00	1
O-Ring	91304-5A2-A01	1
Bolt-Washer (11 x 176 mm)	90005-RNA-A01	10
Oxygen Sensor	36532-5LA-A01	1

WARRANTY CLAIM INFORMATION

Operation Number	Description	Flat Rate Time	Defect Code	Symptom Code	Template ID	Failed Part Number
1115G2	ALL Vehicles: Inspect the vehicle.	0.5 hr	6SP00	KF600	17-034A	10002-5LA-A00
A	CR-V 2WD: Inspect the vehicle and replace the cylinder block.	12.0 hrs	6SP00	KF600	17-034B	10002-5LA-A00
B	CR-V AWD: Inspect the vehicle and replace the cylinder block.	12.0 hrs	6SP00	KF600	17-034C	10002-5LA-A00

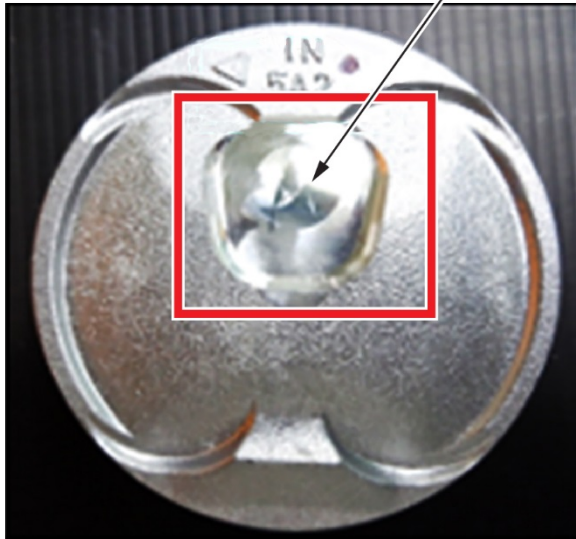
Skill Level: Repair Technician

INSPECTION PROCEDURE

1. Remove all 4 ignition coils and spark plugs. Refer to the service information.
2. Using a 1/2 in. socket wrench with an extension and 19 mm socket, rotate the engine clockwise until all 4 cylinders are lined up evenly.
3. Using the Borescope, carefully insert the tip through the spark plug hole into cylinder No. 1. Compare the cylinder in the vehicle against the images below. Repeat the inspection on all 4 cylinders. The direct injection pistons (good pistons) will have a square depression close to the middle of the piston as shown. The incorrect pistons will not have this characteristic.
 - If any of the pistons lack a square depression, the cylinder block is no good. Go to REPAIR PROCEDURE.
 - If all of the pistons have a square depression, the vehicle is OK. Reassemble the vehicle in the reverse order of removal.

GOOD

SQUARE DEPRESSION



NO GOOD

NO SQUARE DEPRESSION



REPAIR PROCEDURE

1. Remove the engine. Refer to the service information.
2. Replace both the under-floor three-way catalytic converter and the warm-up three-way catalytic converter.
3. Replace both the air fuel ratio sensor and the secondary heated oxygen sensor.
4. Replace the cylinder head assembly and transfer all the necessary parts from the original engine to the new assembly.
5. Reinstall the engine. Refer to the service information.

END