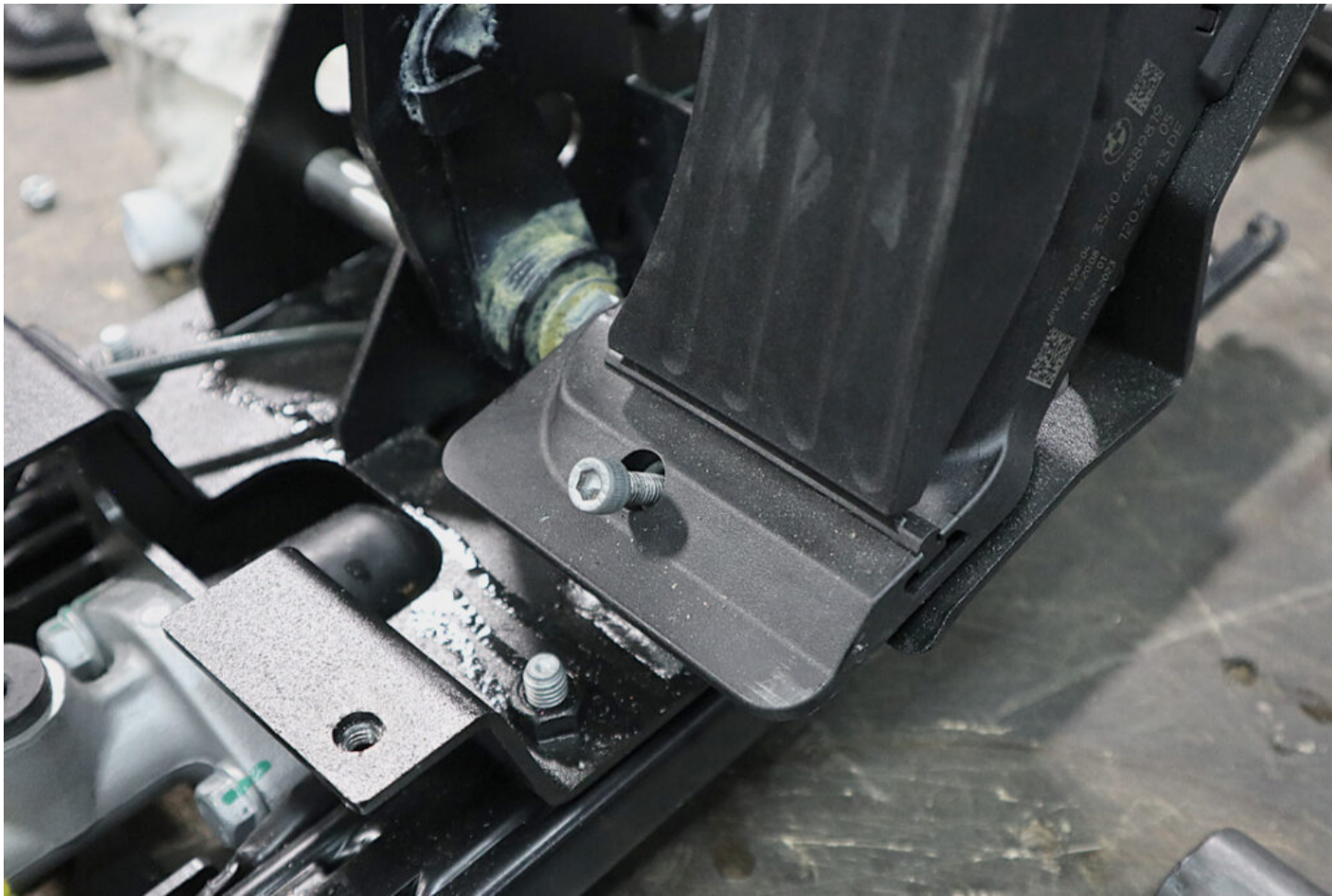
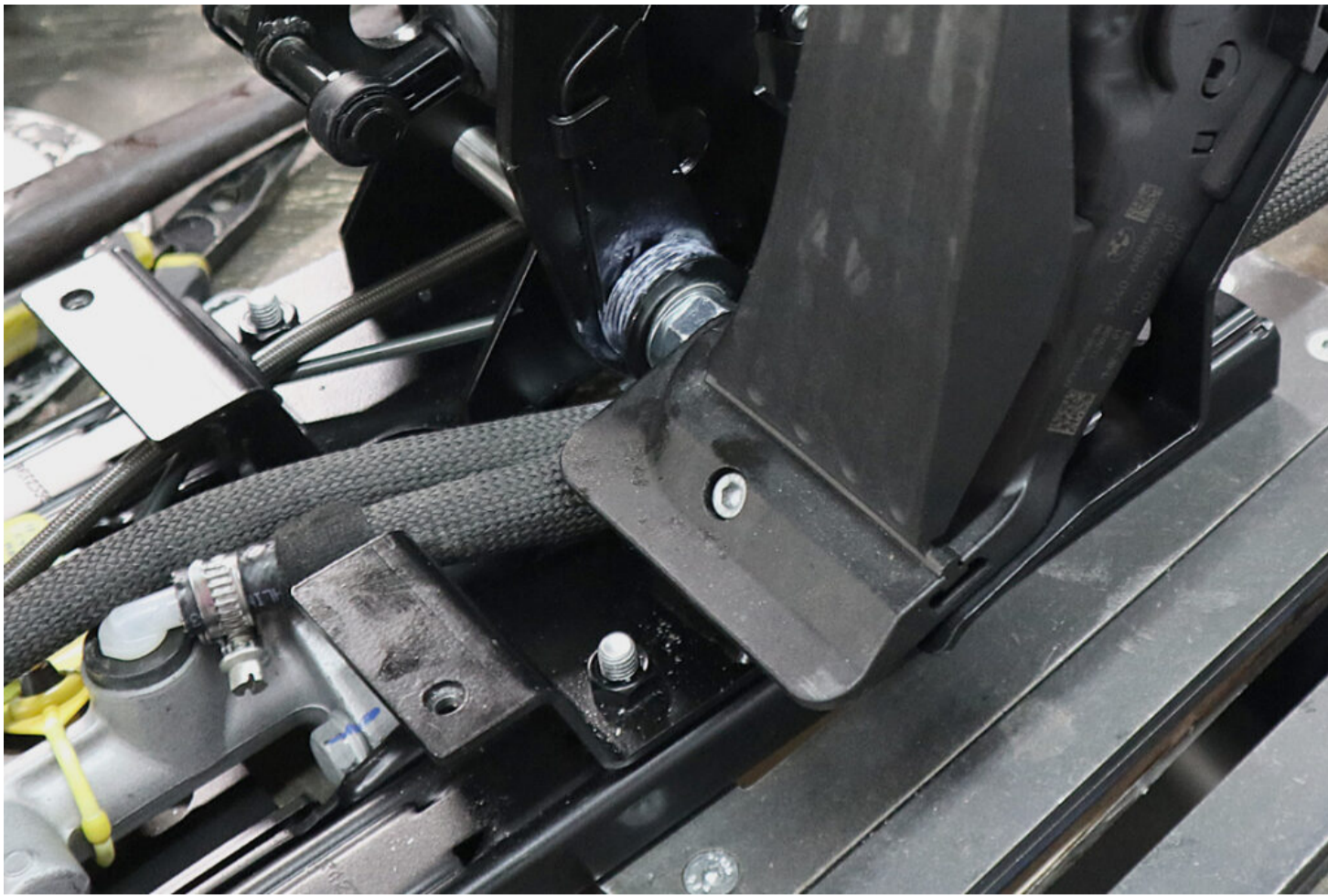


- Remove wiring connectors and clips from the rear of the old pedal box.

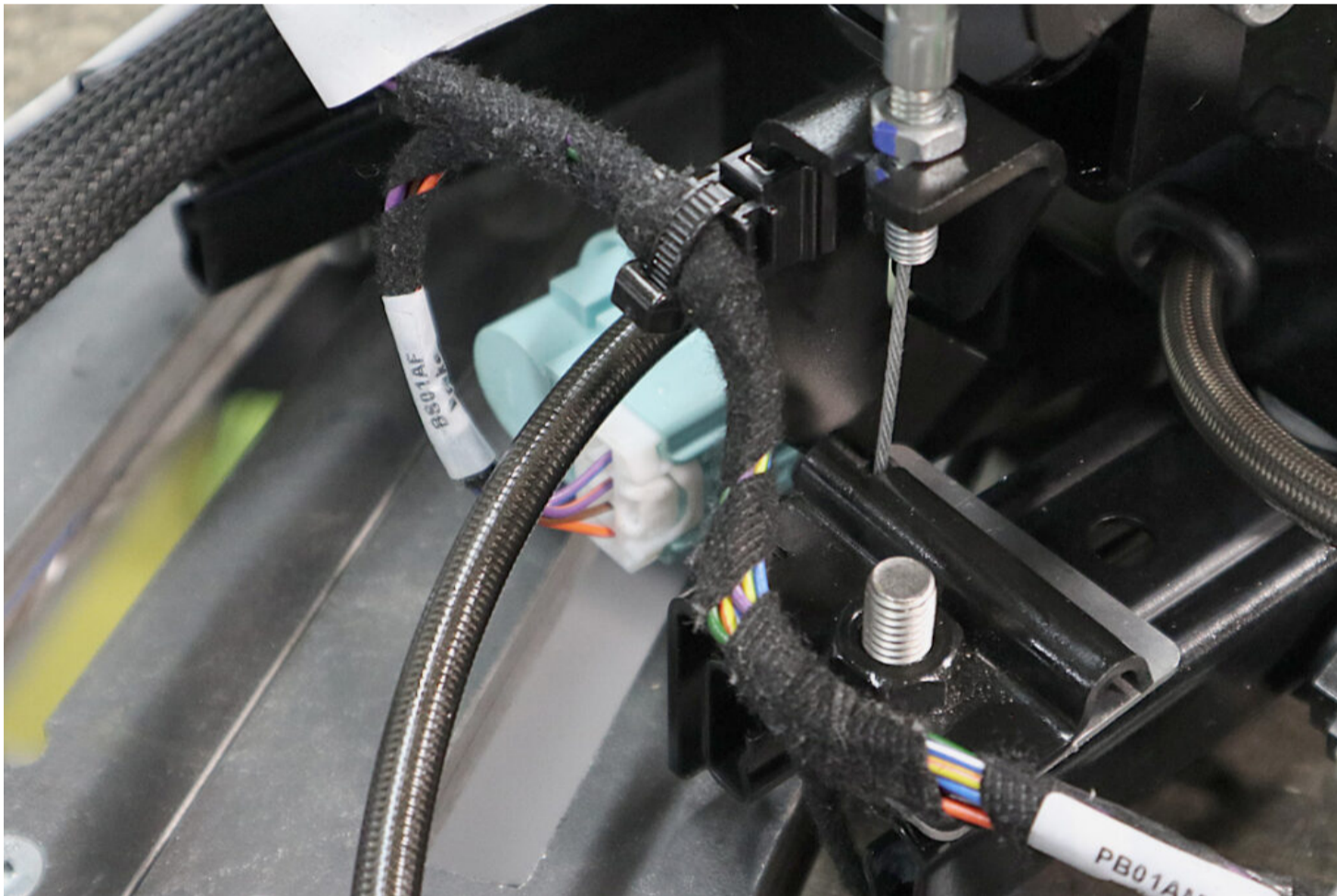


- Remove the accelerator pedal retaining bolt from the old pedal box.





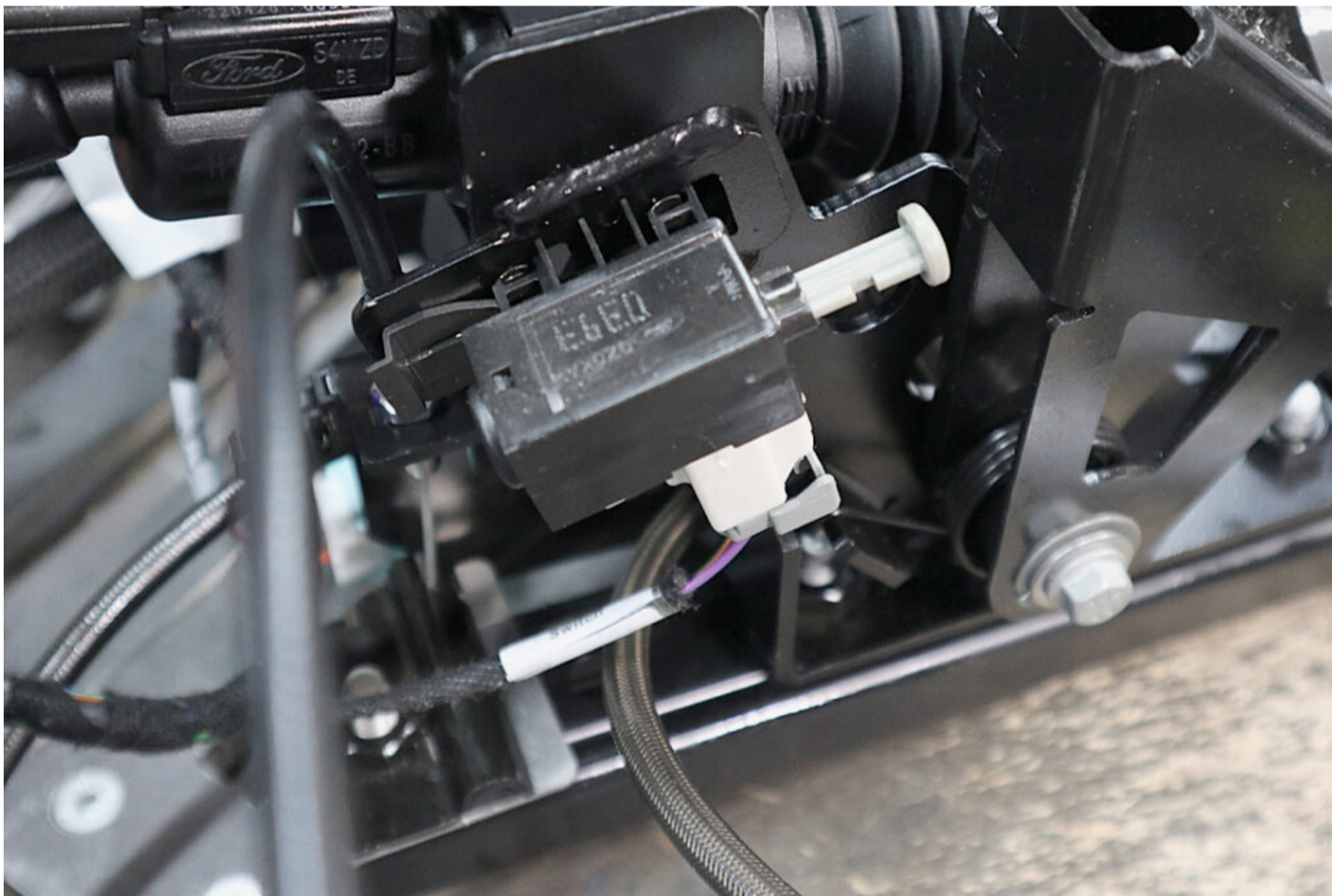
- Locate the alignment hole on the new pedal box to fit the accelerator pedal using the retaining bolt.

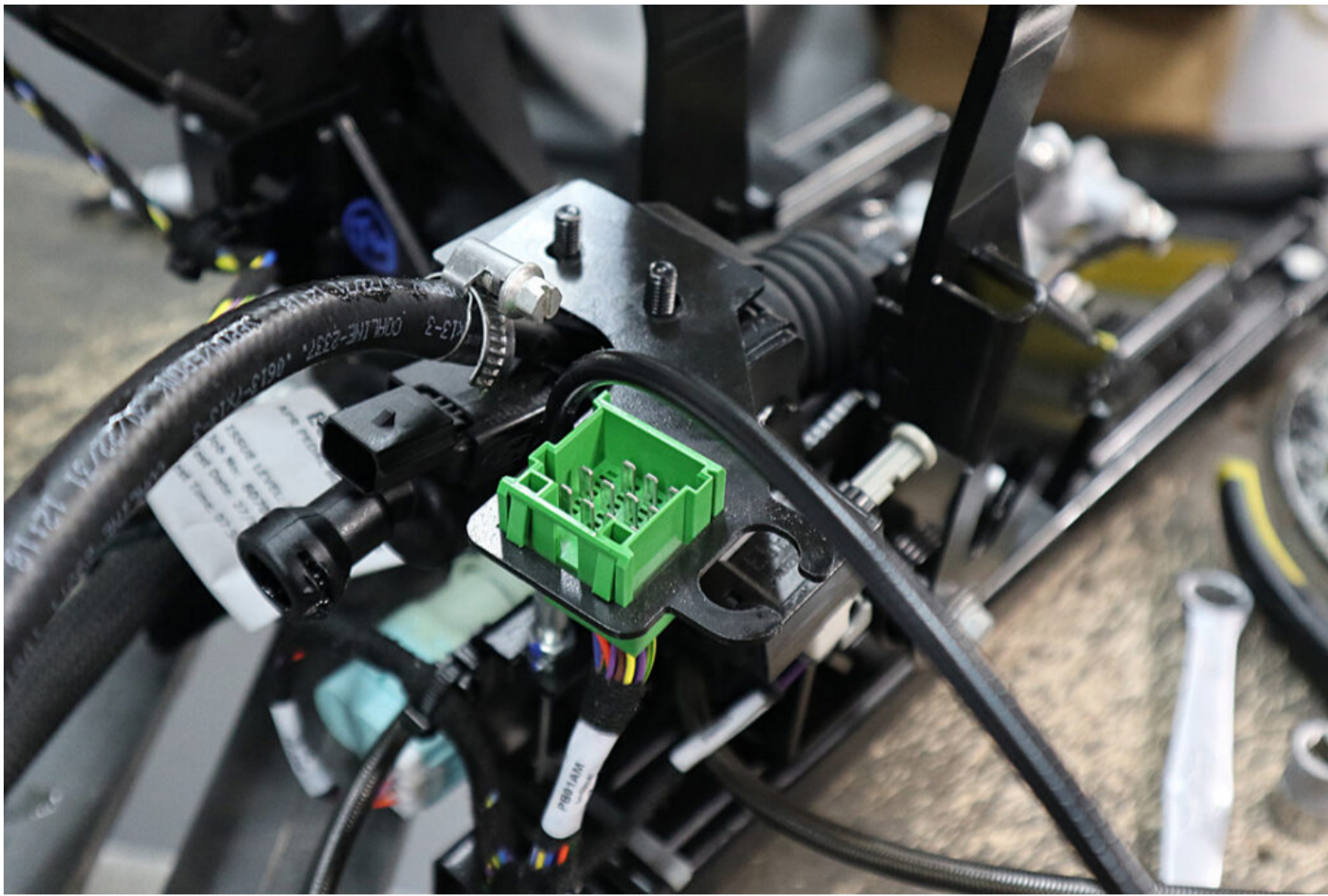


- Refit the wiring clip to the rear of the new pedal box.

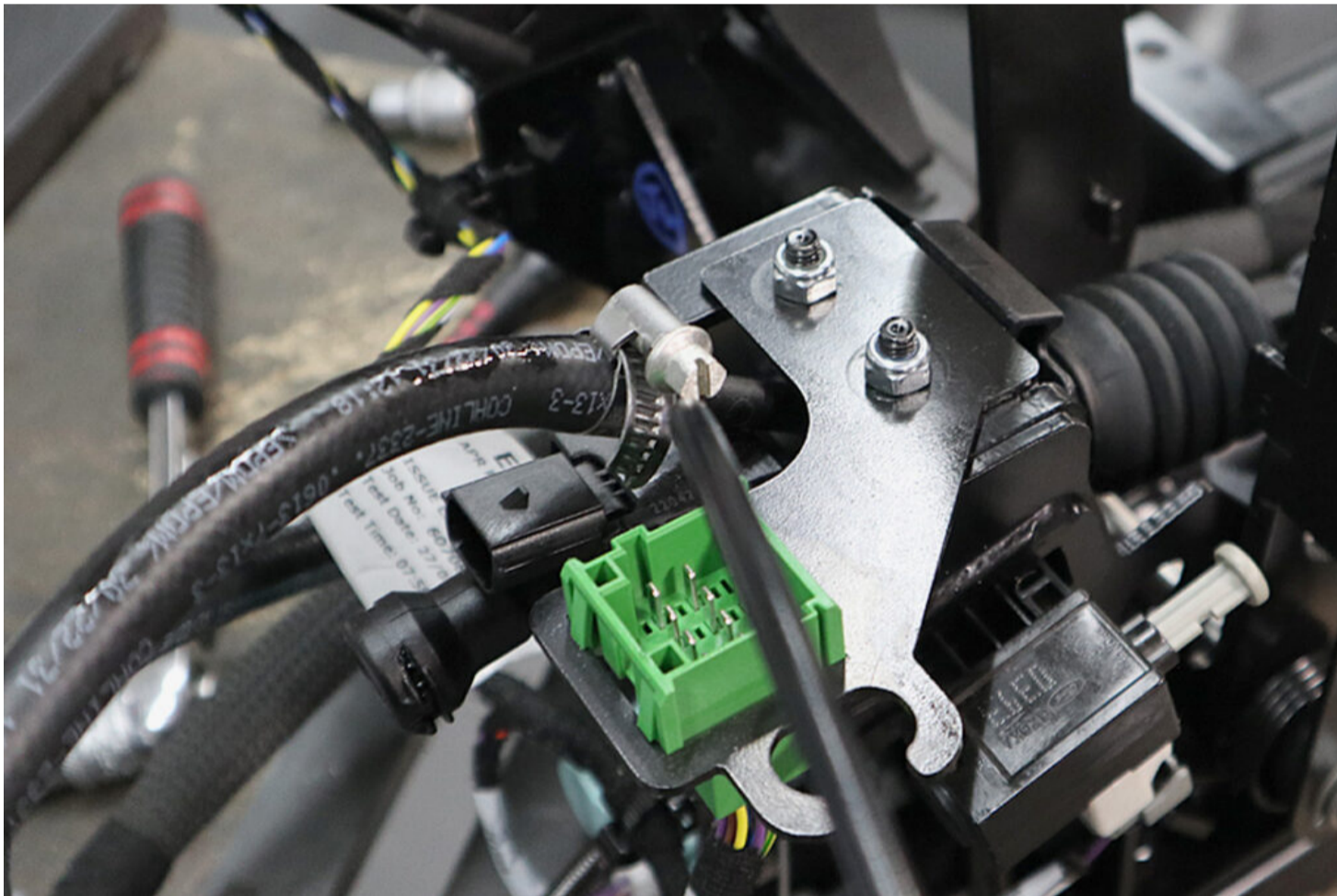


- Fit the brake light switch connector.

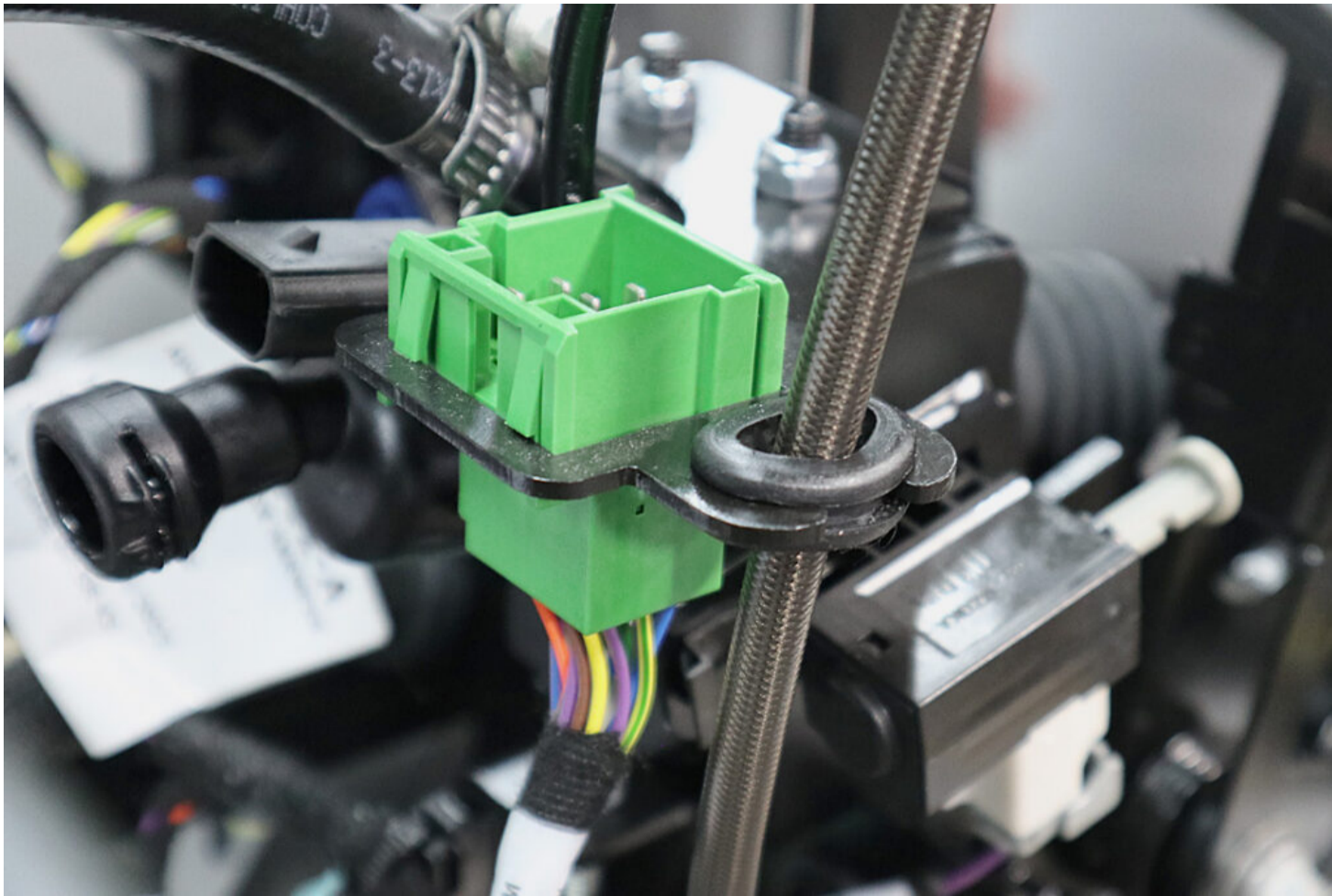




- Fit the clutch switch to the rear of the new pedal box, by depressing the tags and sliding it into the holes.



- Fit the plate to the rear of the new pedal box.
- Fit the plate with the new nuts (as supplied as part of the kit) to the rear of the new pedal box and tighten up with a 10mm socket and torque wrench to **10Nm**.



- Fit the brake line grommet to the new pedal box.

### Super 3 – Pedal Box Refit Procedure

