



- Tighten the adjustment lever retaining plate bolt.

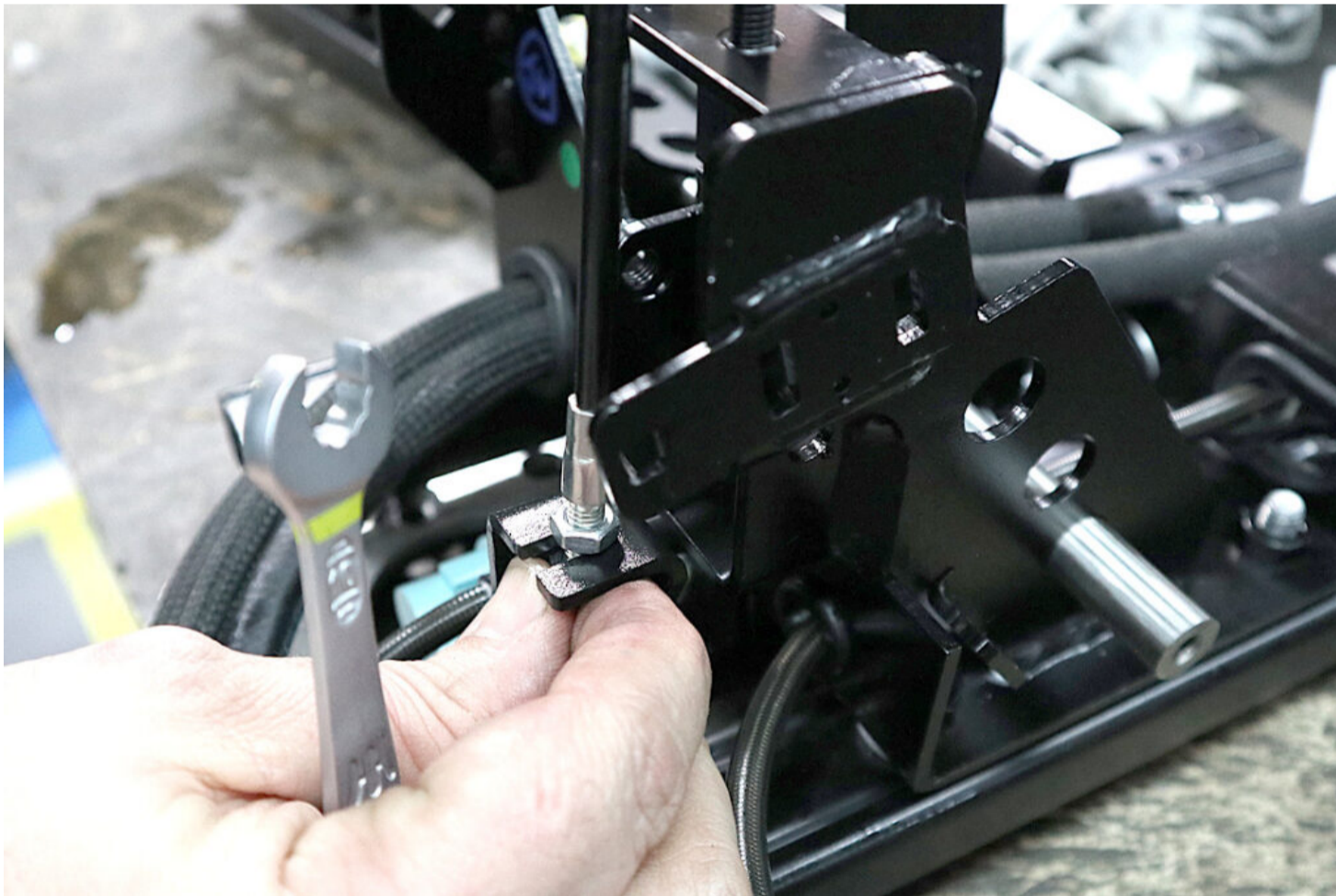


Ensure the new pedal box runners are slid to the fully forwards position.

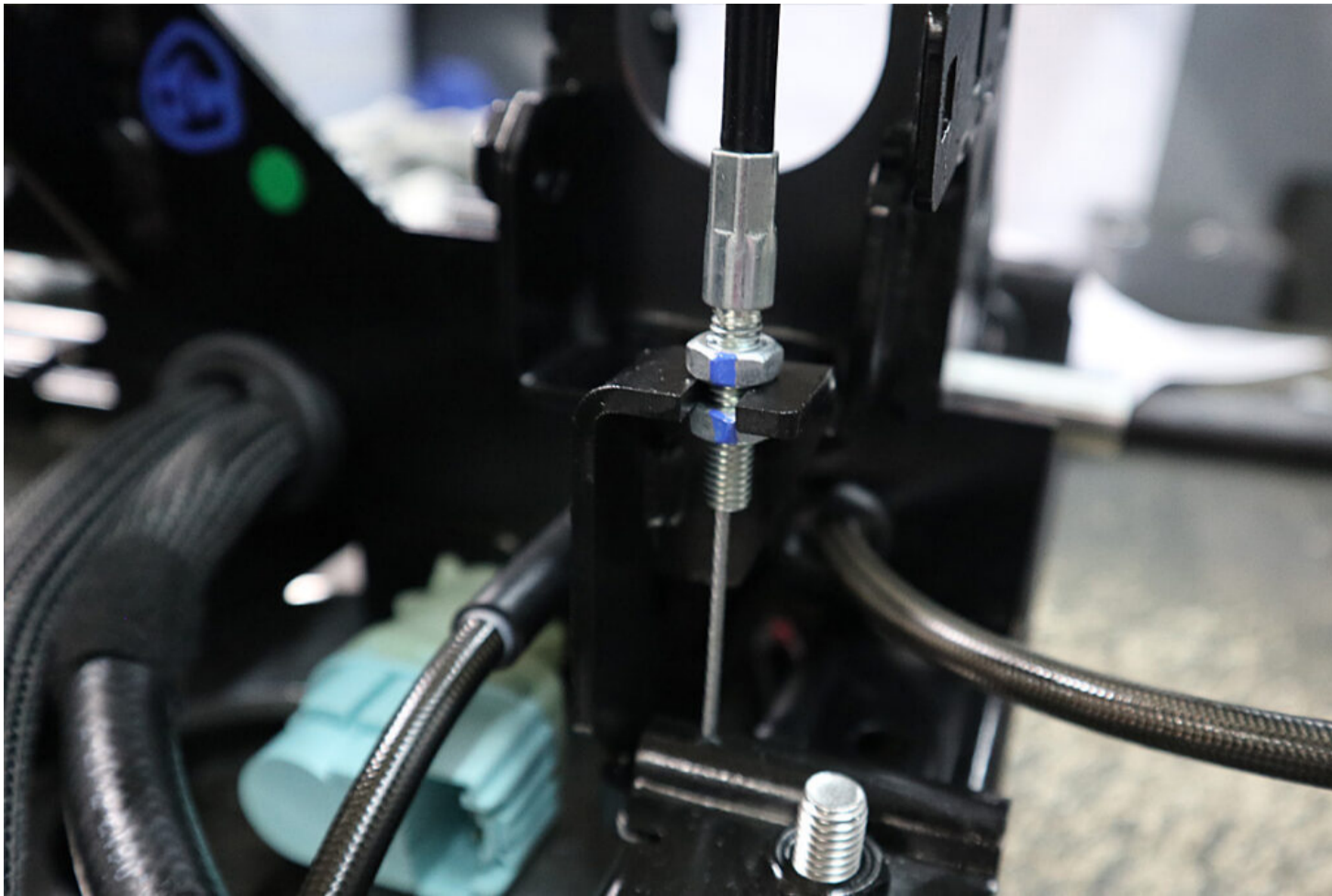
- Lock the pedal box plate.



There should be 4-5mm of free cable between the pull handle and the cable outer, adjust the cable as necessary to achieve this.



- Tighten the adjustment lever locking nuts with a 10mm spanner.



- Apply a paint mark with a suitable paint pen or similar to the locking nuts.

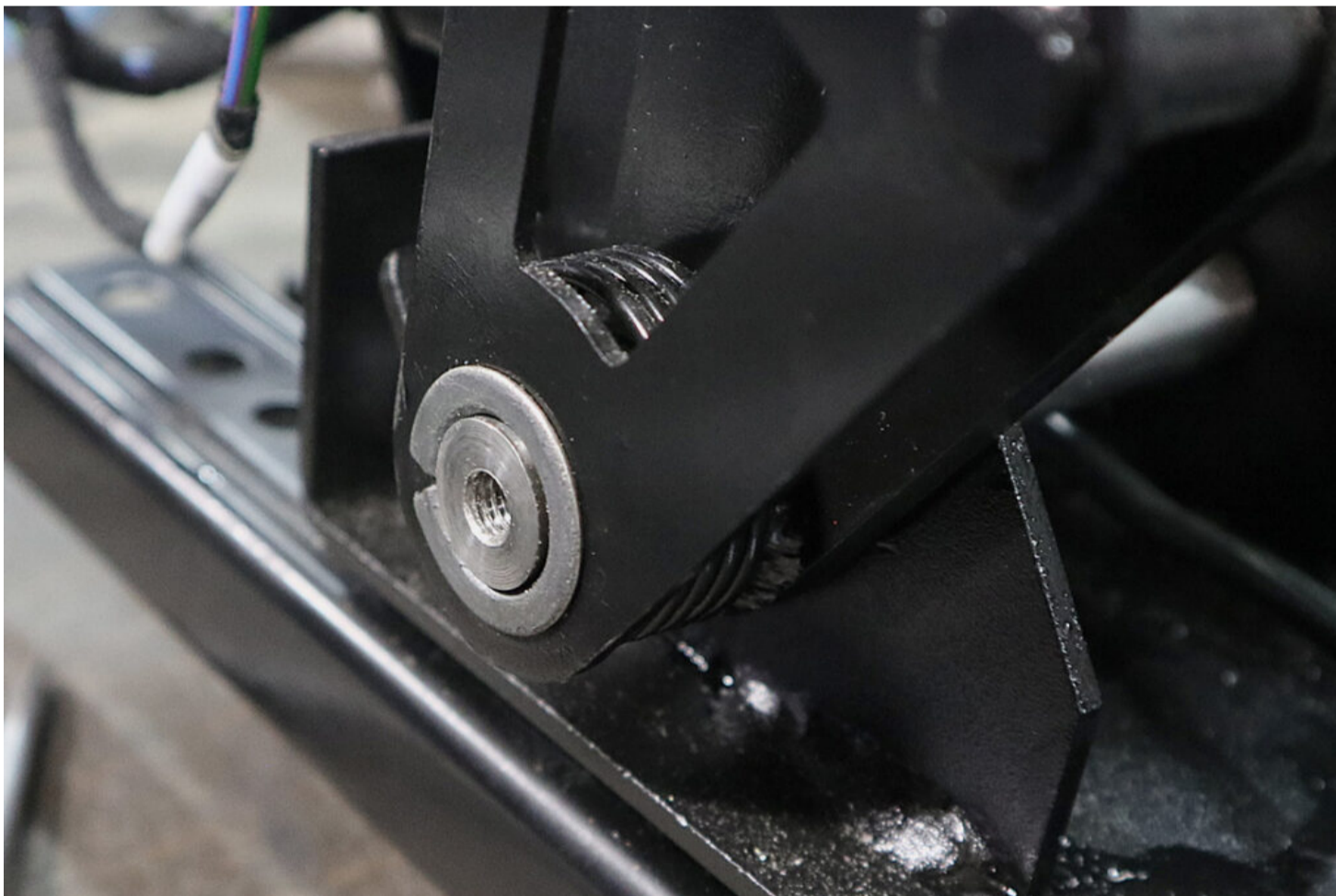




- Remove the master cylinder circlip from the old clutch pedal.



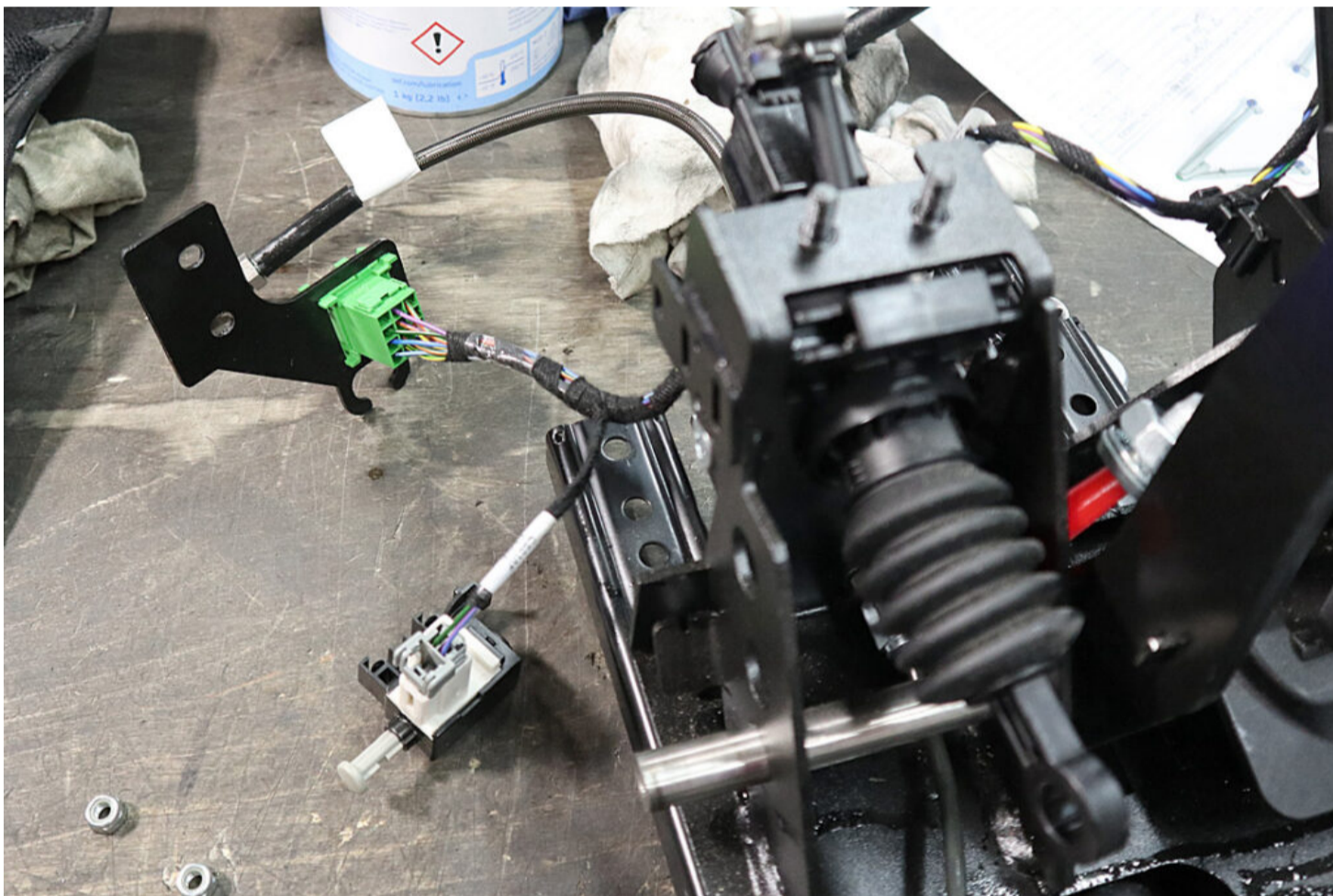
Discard the old circlip as this MUST NOT be reused.

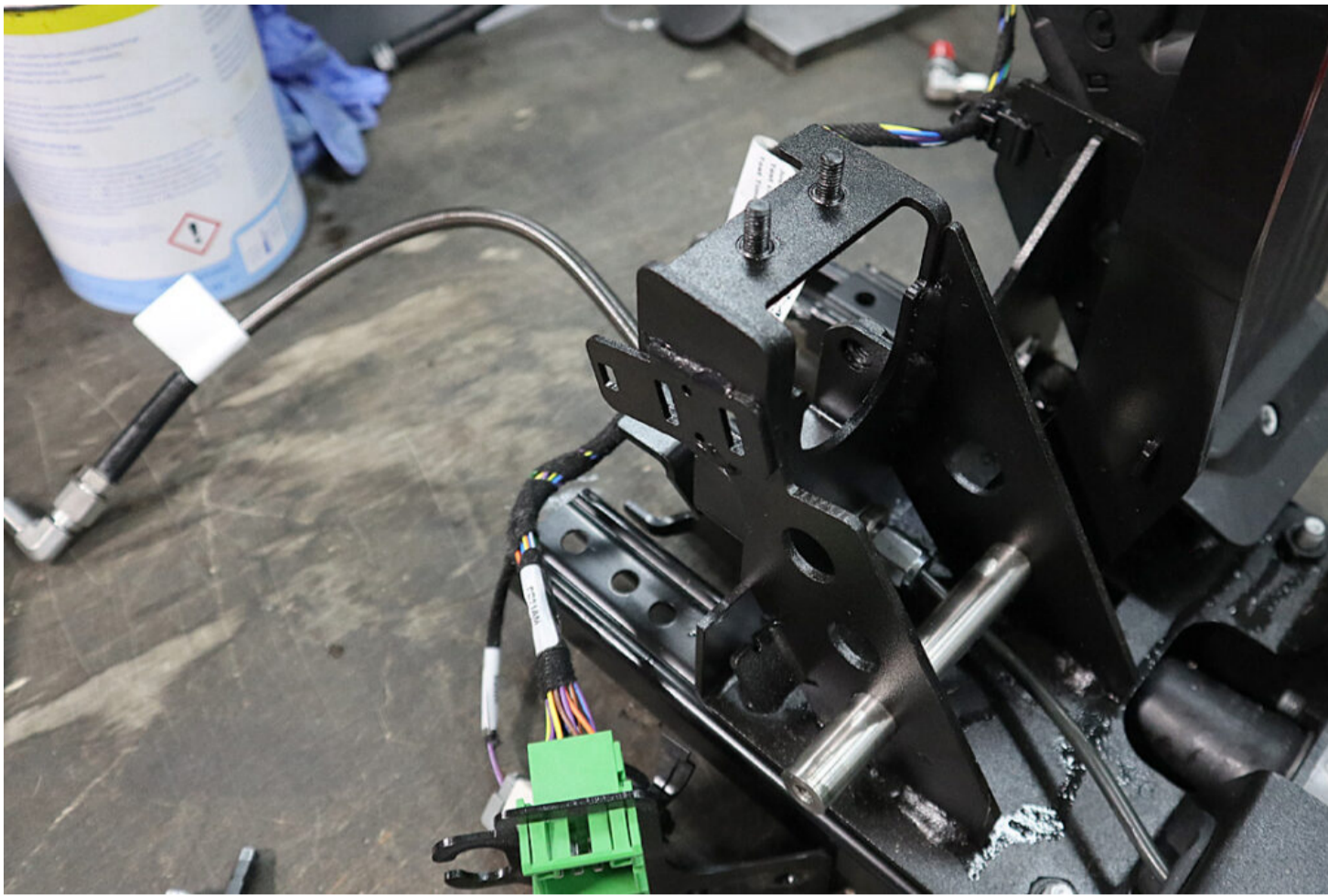


- Remove the clutch pedal retaining bolt from the old pedal box.



- Remove the clutch pedal.





- Remove the clutch master cylinder retaining bolt from the old pedal box.
- Remove the clutch master cylinder.