



SERVICE BULLETIN INSTRUCTIONS FOR RECALL 23V-902

To: Battle Motors, Inc. Dealer and Service Center Network

Date: January 22, 2024

Units Involved: Chassis produced between the dates of December 2022 and December 2023. A list of suspect vehicles is attached part of this service bulletin.

Topic: Inspection and replacement of suspected defective draglink.

Battle Motors, Inc. has determined that the drag link connecting the steering gear to the roadside steering knuckle may become deformed or, in rare cases, suffer a catastrophic failure. Battle Motors, Inc. had a failed quality control process, which led to the purchasing of an unapproved component. To correct this, Battle Motors, Inc. is authorizing an inspection and replacement of the draglink.

Warranty Status: Reimbursement by warranty claim utilizing one of the following codes:

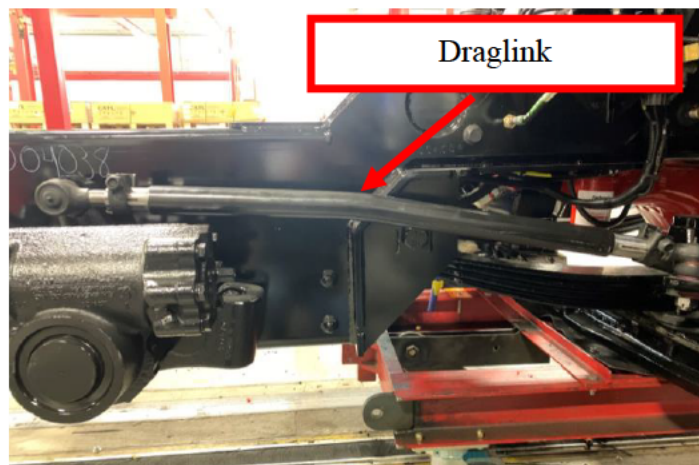
- 00-DL-001: Inspection without replacement – 0.3 hours.
- 00-DL-002: Inspection and replacement of draglink – 0.7 hours.
- Order Part Number: 076C-0123 for Crew Cab Models
076C-0125 for Standard Cab Models
Max quantity of one (1) per unit



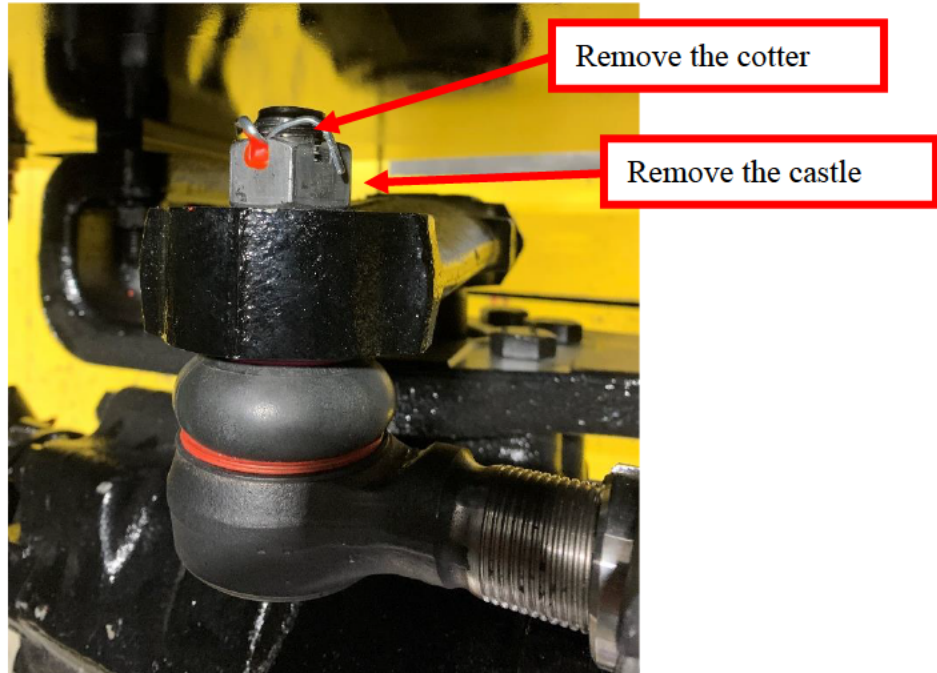
WARNING Urgent attention to this service bulletin is required. Failure to complete this service in a timely manner may result in equipment damage or personal injury.

Service Instructions:

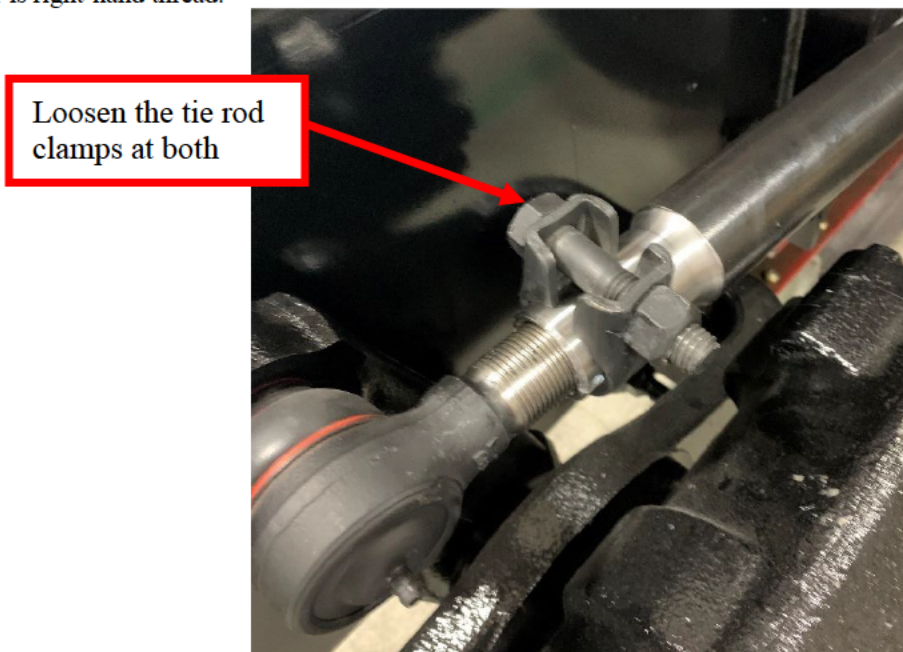
1. Determine if the chassis is one of the suspected units by referencing the VIN list at the end of this bulletin. If the unit is on the list, proceed to step two; if it is not, no further action is required.
2. Tilt the cab per the standard operational instructions in the Operator's Manual.
3. Locate the draglink on the roadside of the vehicle.



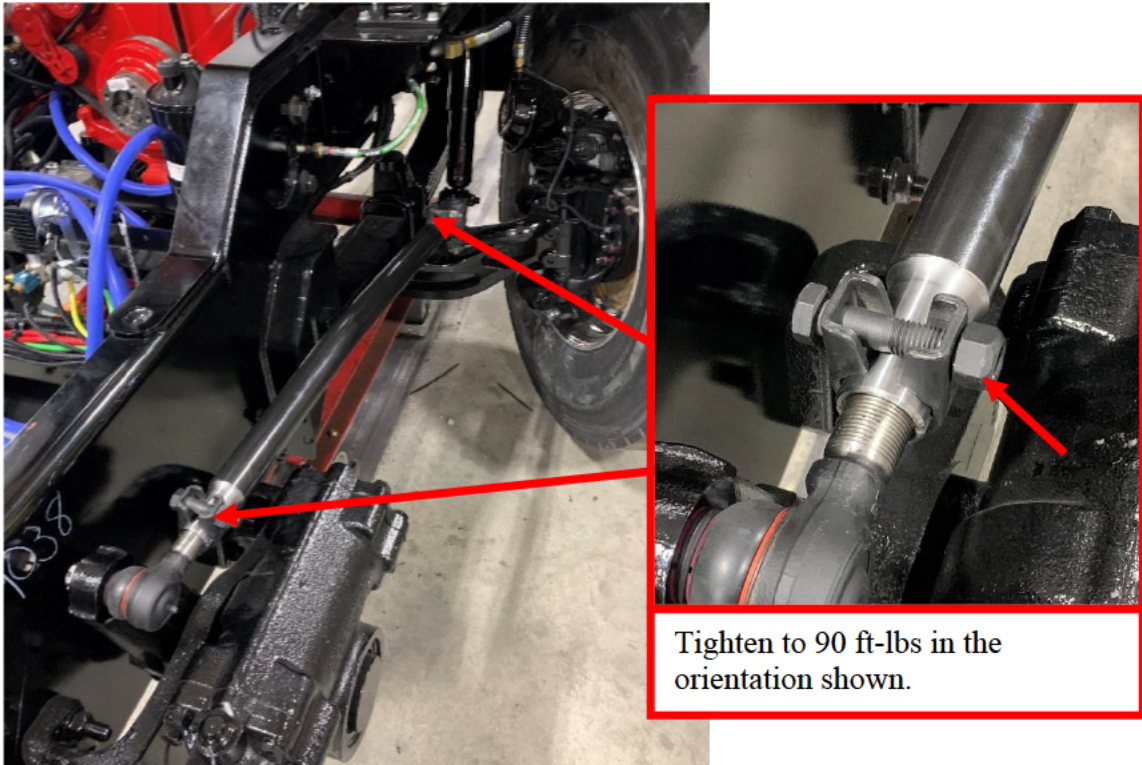
4. Measure the diameter of the draglink tube with a Vernier Caliper. If the tube measures 48 mm, proceed to step 5. If the tube measurement is not 48 mm, no further action is required.
5. Remove the two castle nuts and cotter pins that are securing the drag link to the truck.



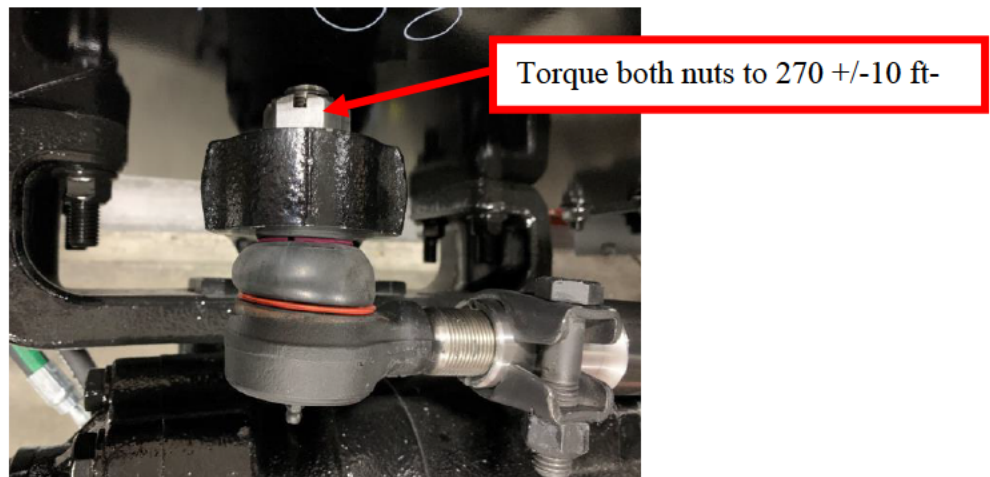
6. Loosen the tie rod clamps at both ends and remove the tie rod ends from the old drag link. NOTE: One tie rod end is left-hand thread, and the other is right-hand thread.



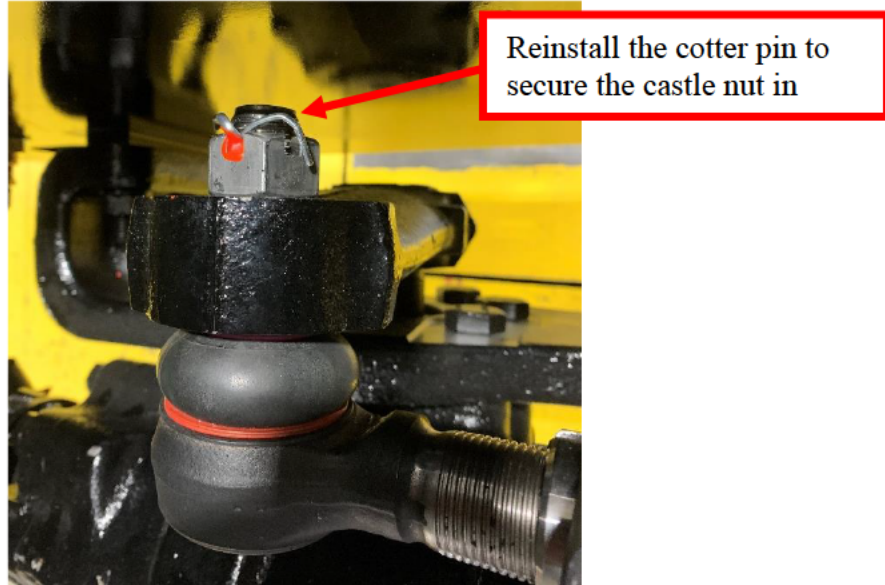
7. Reinstall the tie rod clamps, and tie rod ends onto the new draglink, noting the thread direction.
8. Adjust the tie rod ends in or out evenly until the ends fit into place on the axle steering arm and steering gear box arm. NOTE: The bend in the drag link faces straight up.
9. Once drag link is in place, torque the tie rod clamps at both ends to 90 ft-lbs. Verify they are in the orientation shown below.



10. Then tighten both castle nuts to 270 +/-10 ft-lbs to secure the drag link on the truck.



11. Finally, insert and bend the cotter pin in the castle nuts.



12. Once the installation is complete, turn the wheel in both directions to verify that you have full range of steering and that the steering wheel is centered. If not, proceed with standard repair procedures for steering poppet adjustment, axle stop adjustment, and alignment procedures in the vehicle's Service Manual.

Vehicle Identification Number List

