

RECALL 23V558 / 2023-441 REMEDY INSTRUCTIONS



Make(s): PAUSE
 Model(s): PETXC20.2 & PETXC20.3
 Model Year(s): 2023

Concern:
 The awning may not be adequately attached to the vehicle.

Repair Code: RC-042-03-00-004391
 Allotted Time: 11.00 HRS.
 Inspection Code: RC-042-05-00-004390
 Allotted Time: .30 HRS.
 Photo(s) Required: NO
 Prior Authorization Required: YES
 Part(s) Kit Number: F100441705
 Part(s) Return: N/A

Turn off LP Gas at LPG Tank(s). Disconnect the vehicles' battery Positive and Negative, disconnect any House battery(s) Positive and Negative, if equipped with a generator ensure it is off and lastly, ensure the vehicle is disconnected from shore power. Block any tires/wheels to prevent the vehicle from rolling. Failure to do so may result in electrocution, fire or other personal injury, property damage and/or death.

STEP 1: SLIGHTLY EXTEND AWNING (IN GARMIN TABLET);

STEP 2: DISCONNECT TRAILER FROM SHORE POWER AND TURN BATTERY DISCONNECT OFF;

STEP 3: REMOVE ACCESS PANEL ON FRONT WIND DEFLECTOR AND DISCONNECT ELECTRICAL CONNECTIONS FOR AWNING, LEAVING WIRING LABELS INTACT TO ASSIST IN RE-WIRING UPON COMPLETION;

STEP 4: UNFASTEN SET SCREWS FOR THE AWNING FABRIC (UNDER THE FABRIC) AND PLASTIC SET CLIPS (ON TOP OF FABRIC);

STEP 5: APPLY PRESSURE TO AWNING, AND MAINTAIN, TO DETACH AWNING FABRIC RAIL BY LIFTING THE GRAY AWNING RAIL UP AND OUT (CONTINUE MAINTAINING PRESSURE UNTIL ZIP TIES ARE APPLIED);

STEP 6: MAINTAINING PRESSURE ON THE AWNING TOWARD THE UNIT, ROLL EXCESS AWNING FABRIC UP IN GRAY AWNING RAIL AND SECURE UTILIZING ZIP TIES. ENSURE THE AWNING IS SECURED IN A MINIMUM OF 3 LOCATIONS AROUND EACH AWNING LEG (6 TOTAL SECUREMENT POINTS);

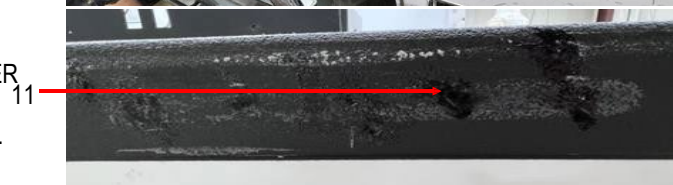
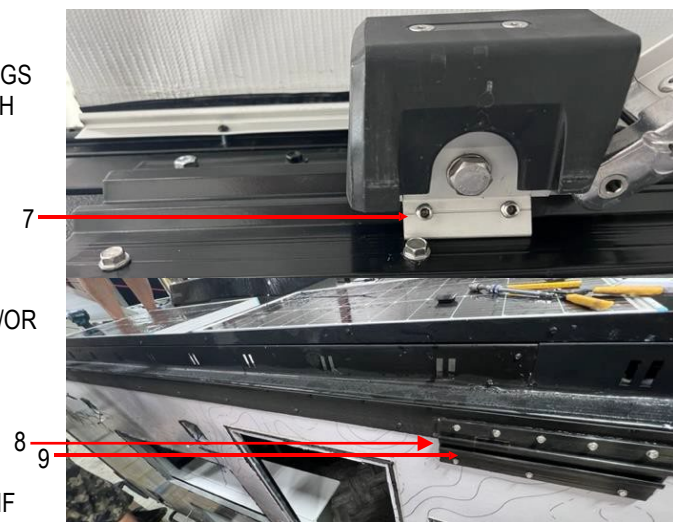
STEP 7: UNFASTEN, 2 (5/32 ALLEN) SET SCREWS, ON THE AWNING LEGS TO RELEASE AWNING FROM AWNING BRACKETS AND DETACH AWNING;

STEP 8: CAREFULLY CUT SEAL/GRAPHIC AROUND BOTH AWNING BRACKETS;

STEP 9: UNFASTEN LAGS AND GENTLY REMOVE AWNING BRACKET, PAYING CLOSE ATTENTION TO NOT DAMAGE GRAPHICS AND/OR RHINO LINING;

STEP 10: REMOVE ALL SCREWS FROM BLACK AWNING RAIL AND CAREFULLY REMOVE FROM RHINO LINED EXTRUSION. REMOVE PLASTIC AWNING CLIP AND RETAIN. REMOVE SCREWS FROM THE TOP OF THE RHINO-LINED EXTRUSION IF APPLICABLE;

STEP 11: UTILIZING A MULTI-PURPOSE THERMOPLASTIC TERPOLYMER ADHESIVE SEALANT (OR EQUIVALENT), FILL ALL SCREW HOLES IN RHINO-LINED EXTRUSION. SMOOTH WITH FINGER. REPEAT AS NECESSARY UNTIL HOLES ARE NOT VISIBLE;



RECALL 23V558 / 2023-441 REMEDY INSTRUCTIONS



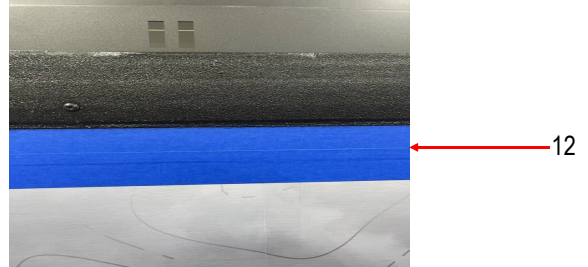
Make(s): PAUSE
 Model(s): PETXC20.2 & PETXC20.3
 Model Year(s): 2023

Concern:
 The awning may not be adequately attached to the vehicle.

Repair Code: RC-042-03-00-004391
 Allotted Time: 11.00 HRS.
 Inspection Code: RC-042-05-00-004390
 Allotted Time: .30 HRS.

Photo(s) Required: NO
 Prior Authorization Required: YES
 Part(s) Kit Number: F100441705
 Part(s) Return: N/A

STEP 12: UTILIZING PAINTER'S TAPE (OR EQUIVALENT), TAPE OFF GRAPHIC BELOW THE RHINO-LINING;



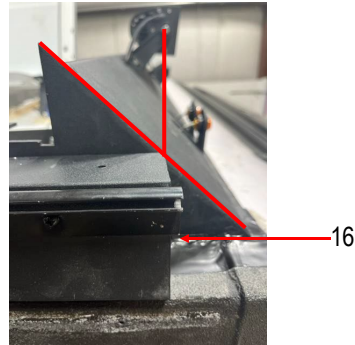
STEP 13: UTILIZING NAP ROLLER, APPLY RHINO-LINING (HERCULINER TRUCK BED LINER) OVER THE EXTRUSION IN BETWEEN THE CORNER CAPS. LIGHTLY BRUSH/DAB RHINO-LINER ONTO EXTRUSION WHERE IT MEETS THE BODY WRAP TO PREVENT EXCESS ON TAPE (REMOVE TAPE WITHIN 2 MINUTES OF APPLICATION OF RHINO-LINING);

STEP 14: ONCE RHINO-LINING IS DRY, RETAPE BODY WRAP IN SAME LOCATION AND APPLY FLAT BLACK SPRAY PAINT TO REAPPLIED RHINO-LINING TO BETTER MATCH THE REST;



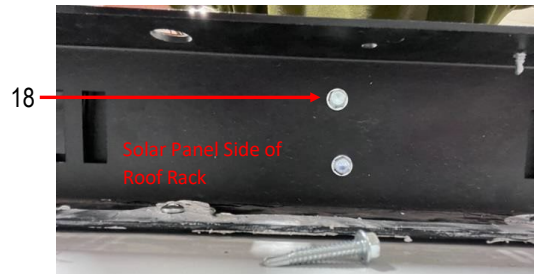
STEP 15: ADD PROVIDED SPACERS ON TO THE ROOF RACK (COVERING THE PAUSE SYMBOLS). 4 TOTAL, SPACED EVENLY ALONG THE EXTERIOR SIDE OF THE ROOF RACK;

STEP 16: REMOVE PROTECTIVE FILM FROM ETERNABOND TAPE ON MOUNTING TUBE AND SET TUBE ON TOP OF RHINO-LINED EXTRUSION AS DEPICTED IN THE PICTURE. ENSURE MOUNTING TUBE IS UP AGAINST SPACERS ON ROOF RACK AND SEATED DIRECTLY ON TOP OF THE RHINO-LINED EXTRUSION;



STEP 17: REMOVE SOLAR PANEL MOUNTING SCREWS AND PROP SOLAR PANELS UP ENOUGH TO GAIN ACCESS TO THE BACK SIDE OF ROOF RACK;

STEP 18: USING A 1/8" DRILL BIT, PRE-DRILL HOLES THROUGH ROOF RACK AND MOUNTING TUBE PRIOR TO INSTALLING SELF-DRILLING LAGS. DO NOT OVERTIGHTEN LAGS. THIS WILL CAUSE THE AWNING TUBE TO NOT PROPERLY SIT ON THE RHINO-LINED EXTRUSION. FASTEN EVERY 18" WITH 2 LAGS;

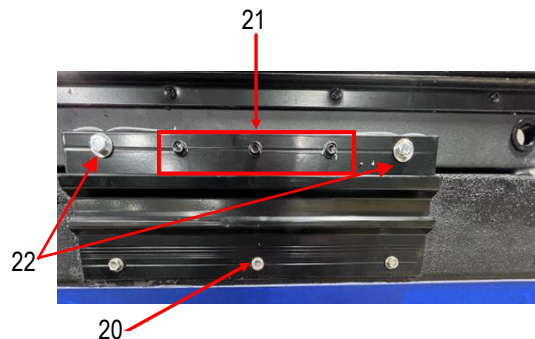


STEP 19: REMOVE PROTECTIVE FILM ON BACK OF AWNING BRACKETS AND PLACE ON THE RHINO-LINED EXTRUSION DIRECTLY ABOVE PREVIOUSLY MOUNTED LOCATION. ENSURE BOTTOM OF AWNING BRACKET IS FLUSH WITH THE BOTTOM OF THE RHINO-LINED EXTRUSION;

STEP 20: INSTALL BOTTOM, CENTER MOUNTING LAG;

STEP 21: INSTALL TOP, CENTER (3) MOUNTING LAGS;

STEP 22: USING A 1/4" DRILL BIT, PRE-DRILL HOLES THROUGH MOUNTING TUBE AND ROOF RACK AND INSTALL PROVIDED MOUNTING BOLTS/WASHERS/LOCK NUTS;



RECALL 23V558 / 2023-441 REMEDY INSTRUCTIONS



Make(s): PAUSE
 Model(s): PETXC20.2 & PETXC20.3
 Model Year(s): 2023

Concern:
 The awning may not be adequately attached to the vehicle.

Repair Code: RC-042-03-00-004391
 Allotted Time: 11.00 HRS.
 Inspection Code: RC-042-05-00-004390
 Allotted Time: .30 HRS.

Photo(s) Required: NO
 Prior Authorization Required: YES
 Part(s) Kit Number: F100441705
 Part(s) Return: N/A

STEP 23: REMOVE BOTTOM, CENTER MOUNTING LAG;

STEP 24: REMOVE PROTECTIVE FILM ON SUPPORT BRACKETS AND PLACE TOP LIP OF BRACKET OVER THE BOTTOM OF THE AWNING MOUNTING BRACKET. ALIGN HOLES AND SECURE;

STEP 25: USING A 1/8" DRILL BIT, CAREFULLY DRILL OUT THE 2 ADDITIONAL HOLES (PROVIDED IN THE SUPPORT BRACKETS) THROUGH THE AWNING BRACKET. **DO NOT DRILL INTO WALL/RHINO-LINED EXTRUSION;**

STEP 26: INSTALL REMAINING LAGS INTO SUPPORT BRACKETS;

STEP 27: USING A 1/4" DRILL BIT, PRE-DRILL A HOLE THROUGH THE MOUNTING TUBE AND WIND DEFLECTOR. UTILIZING A 1" STEP BIT, DRILL THROUGH MOUNTING TUBE AND WIND DEFLECTOR;

STEP 28: INSERT GROMMETS INTO TUBE AND WIND DEFLECTOR;

STEP 29: RE-MOUNT AWNING ONTO AWNING MOUNTING BRACKETS AND RE-INSTALL SET SCREWS ON AWNING LEGS;

STEP 30: WHILE MAINTAINING PRESSURE ON THE AWNING TO PREVENT FULL EXTENSION, CUT ZIP TIES AND SECURE AWNING FABRIC RAIL (GRAY) INTO AWNING RAIL (BLACK). ENSURE AWNING FABRIC RAIL IS FULLY SEATED (PARALLEL TO BLACK AWNING RAIL);

STEP 31: SLOWLY RELEASE PRESSURE ON AWNING. USING THE AWNING'S MANUAL OVERRIDE NUT, EXTENT/RETRACT AWNING FABRIC SLIGHTLY TO ENSURE IT IS SET IN THE APPROPRIATE POSITION;

STEP 32: PRE-DRILL HOLES IN MOUNTING TUBE FOR AWNING FABRIC SET SCREWS. REINSTALL SET SCREWS AND AWNING CLIPS;

STEP 33: RUN AWNING WIRES THROUGH PREVIOUSLY DRILLED HOLE IN MOUNTING TUBE AND WIND DEFLECTOR. RECONNECT AWNING WIRES TO HARNESS UTILIZING WATER-PROOF CONNECTORS;

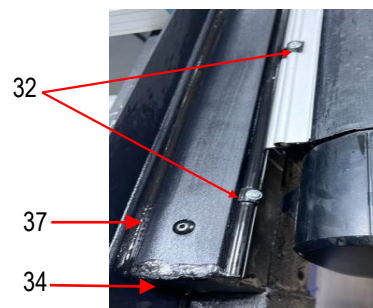
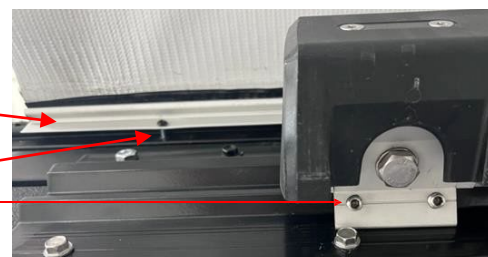
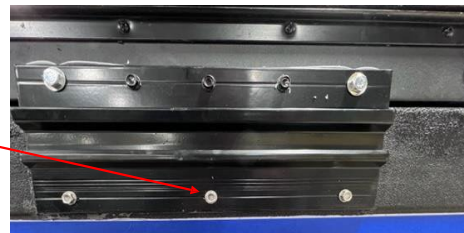
STEP 34: INSTALL AWNING TUBE END CAPS AND SEAL ALONG EDGES TO ASSIST IN RETENTION;

STEP 35: REINSTALL ACCESS PANEL ON FRONT WIND DEFLECTOR;

STEP 36: RESECURE SOLAR PANELS ONTO ROOF RACK;

STEP 37: SEAL TOP OF AWNING MOUNTING TUBE WHERE IT MEETS THE ROOF RACK;

STEP 38: REESTABLISH POWER TO TRAILER AND CHECK FOR PROPER OPERATION;



RECALL 23V558 / 2023-441 REMEDY INSTRUCTIONS



Make(s): PAUSE
Model(s): PETXC20.2 & PETXC20.3
Model Year(s): 2023

Concern:
The awning may not be adequately attached to the vehicle.

Repair Code: RC-042-03-00-004391
Allotted Time: 11.00 HRS.
Inspection Code: RC-042-05-00-004390
Allotted Time: .30 HRS.

Photo(s) Required: NO
Prior Authorization Required: YES
Part(s) Kit Number: F100441705
Part(s) Return: N/A

PHOTOS FOR REFERENCE:

PURCHASE LOCALLY*

* - EXTRA TIME HAS BEEN BUILT INTO THE REMEDY ALLOWANCE FOR REIMBURSEMENT OF THESE ITEMS.

