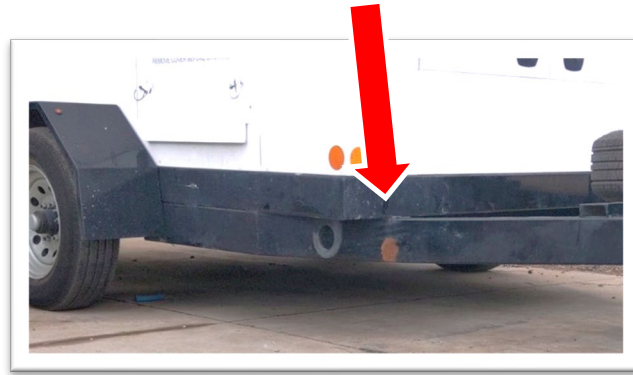


EBB-60 TRAILERS manufactured between 2020 and 2022: Tongue Deformation at the Trailer Crossmember

Background

Structural deformation of the tongue assembly is possible near where the trailer tongue meets the front trailer crossmember. Visible evidence of deformation may be suggested by buckled or flaked protective coating (powder coat) at the affected area. This service bulletin provides the steps necessary to inspect an EBB Trailer for tongue deformation.



IMPORTANT: For EBB-60 Trailers manufactured between 2020 and 2022, **NONE ARE TO BE USED** until the trailer has been retrofit with the new EBB trailer tongue assembly. A redesigned and strengthened tongue assembly (65327.400) is being manufactured and will be available this summer.

If you have one of the affected trailers, contact Craig Carney at Temp-Air MFG: (952) 707-5235 or craig.carney@sunbeltrentals.com.

Time required: 15 minutes

Parts required: NONE

Tools required:

SIZE	DESCRIPTION	QUANTITY
N/A	LEVEL GROUND	1
STANDARD	TAPE MEASURE	
4' TO 6' LONG	STRAIGHT EDGE	1



MAKE SURE THAT THE TRAILER UNIT IS PARKED ON A LEVEL SURFACE WITH THE WHEELS CHOCKED. MAKE SURE THAT THE TOW VEHICLE ENGINE IS OFF WITH THE TRANSMISSION IN PARK. AND THE PARKING BRAKE SET.

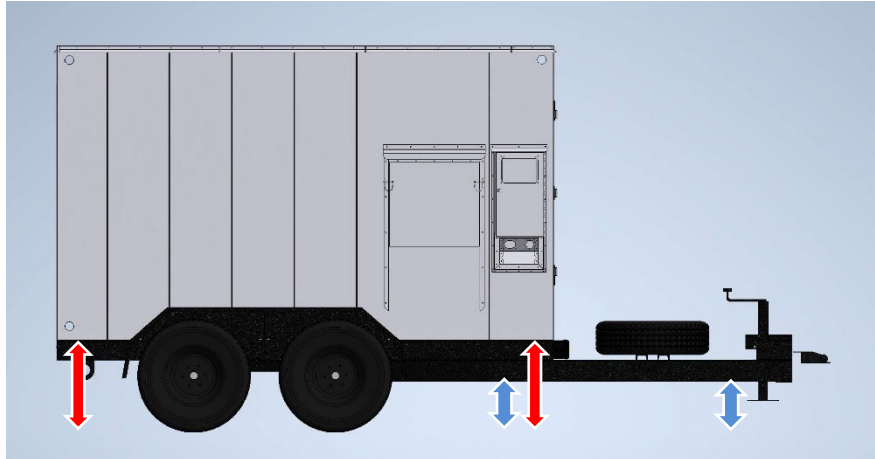
Inspecting an EBB Trailer for Tongue Deformations

1. Park the EBB Trailer so that it is on a level surface. Using the tape measure, record the distance from the GROUND to the TOP OF THE TRAILER FRAME in the two (2) spots noted in the drawing with **RED ARROWS**.

NOTE: If these two measurements are not identical, disconnect the trailer from the tow vehicle and use the tongue jack to get the two (2) distances to measure the same.

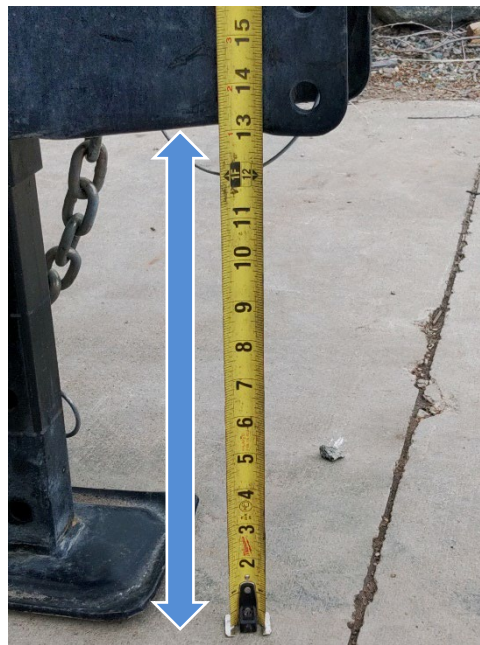
**Measure to
TOP of FRAME
RAIL**

RED ARROWS



2. With the trailer level, use the tape measure to check the distance from the GROUND to the BOTTOM OF THE FRAME RAIL just behind the tongue and from the GROUND to the BOTTOM OF THE HITCH POINT at the end of the tongue as shown with **BLUE ARROWS**. In these photos, the tongue has deformed by over three (3) inches.

IMPORTANT: If this distance at the hitch point is not the same as the distance from the ground to the bottom of the frame rail, the trailer tongue has deformed and the trailer must not return to service until the deformation is repaired.



**Measure to BOTTOM of
FRAME RAIL and
BOTTOM of HITCH
POINT**

BLUE ARROWS

3. To verify that deformation has occurred, hold a long straight edge (of at least 4 feet) along the BOTTOM EDGE OF THE TRAILER to beyond where it meets the tongue. If there is a gap between the straight edge and the bottom of the tongue, the trailer tongue has deformed.

