

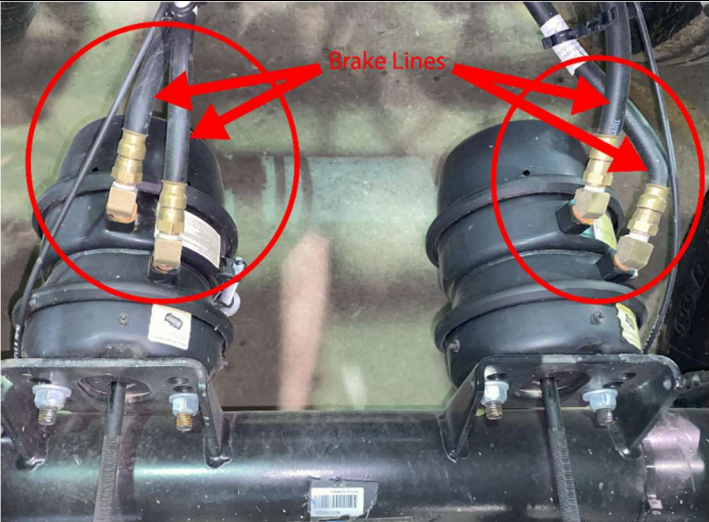
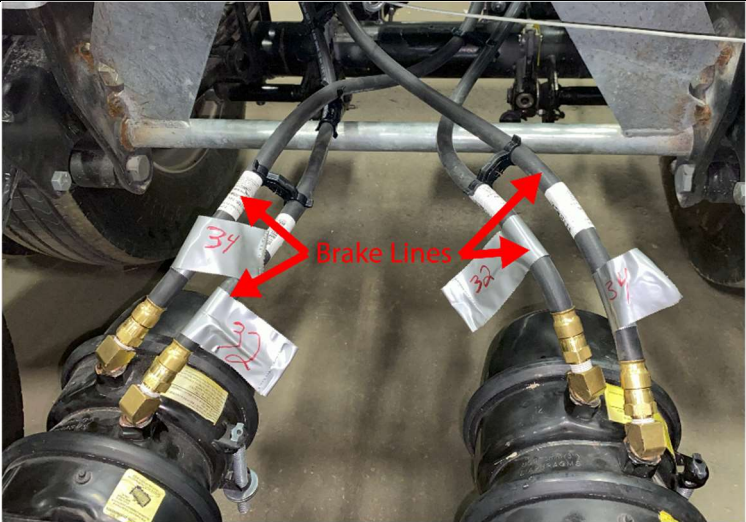
40ft Chassis RECALL (External Use)

A. Purpose:

This work instruction provides details on **what** to inspect and **how** to perform recall repairs for the 40ft chassis.

B. Scope:

This work instruction applies to 40ft chassis manufactured between Jan 1, 2023 and June 30, 2023.

Item 1 - Both Lengths of Brake Hoses Too Tight	
	
BAD	CORRECT
Corrective Actions	
Step 1 – Remove 28in Hoses	
Step 2 – Move 32in Hoses to Same Side Connections	
Step 3 – Install 34in Hoses to Diagonal Connections Routing Longer Hoses on Top of Shorter Hoses	
Step 4 – Install Hose Separators as Shown	

(CONTINUED)

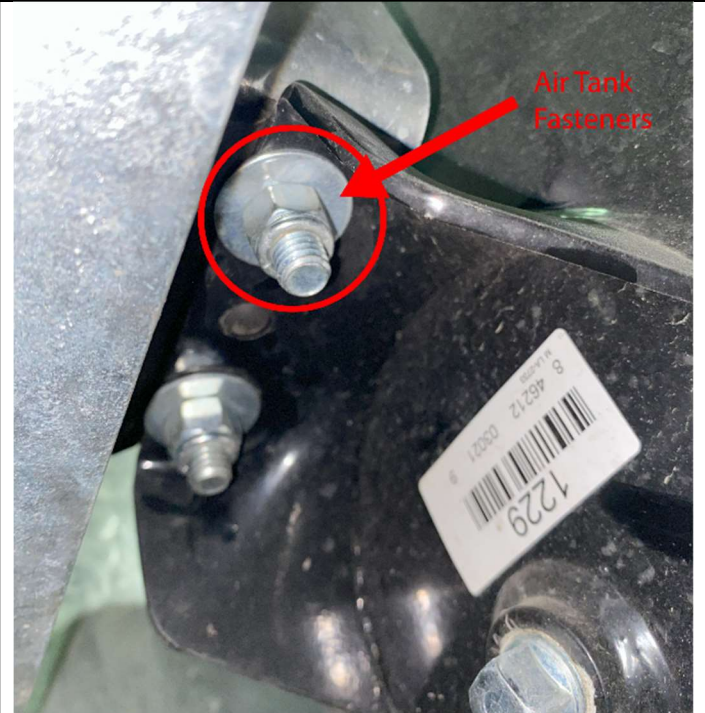
Document ID	(External Use)	Revision	A
Revised By	JZimmer	Approved By	JZimmer

40ft Chassis RECALL (External Use)

Item 2 - Air Tank Fasteners Loose/Shy



BAD



CORRECT

Corrective Actions

Step 1 – Install and Tighten Fasteners Until Rubber Pad Compresses to No Less Than Approx ¾ of its Thickness

Document ID	(External Use)	Revision	A
Revised By	JZimmer	Approved By	JZimmer