



HYUNDAI Technical Service Bulletin

GROUP
RECALL

NUMBER
23-01-062H

DATE
JULY 2023

MODEL(S)
VELOSTER (FS)

SUBJECT: REAR PARKING ASSIST SENSOR (RPAS) INSPECTION AND FUSE/SENSOR REPLACEMENT (RECALL 242)

★ IMPORTANT





Vehicle repairs related to safety recalls are critically important and must be performed properly in accordance with TSB procedures. Review this bulletin in its entirety prior to beginning any repair work.

As required by federal law, dealers must not deliver new vehicles for sale or for lease to customers until all open recalls have been performed. Dealers must also perform all open recalls on used vehicles, demo, and rental vehicles prior to placing them into customer use and whenever an affected vehicle is in the shop for any maintenance or repair.

Access the "Vehicle Information" screen via WEBDCS to identify open recalls.

Description: The Rear Parking Assist Sensor(s) (RPAS) on certain 2012 ~ 2014MY Veloster vehicles may experience a malfunction during operation due to water intrusion. An electrical short may develop which could increase the risk of a fire in the Parking Assist Sensor(s).

This bulletin provides the recall service procedure to inspect the sensors. The 10A fuse will be replaced with a lower amperage fuse and a revised label will be attached to the junction box. If necessary, replacement of the faulty sensor(s) can be identified by the specific DTC code that refers to the exact location of the faulty sensor(s):

DTC CODE	PAS SENSOR LOCATION
B1214 (REAR L/H)	
B1215 (REAR CENTER L/H)	
B1216 (REAR CENTER R/H)	
B1217 (REAR R/H)	

Applicable Vehicles (Certain):

- 2012~14MY Veloster (FS) vehicles produced between 7/07/2011 – 10/31/2013.

Circulate To: General Manager, Service Manager, Parts Manager, Warranty Manager, Service Advisors, Technicians, Body Shop Manager, Fleet Repair

SUBJECT: REAR PARKING ASSIST SENSOR (RPAS) INSPECTION AND FUSE/SENSOR REPLACEMENT (RECALL 242)

Parts Information:

■ **FUSE KIT (100% Replacement)**

PART NAME	PART NUMBER	REMARKS
FUSE KIT	91KIT-2V000QQH	91940-2V022: LABEL STICKER 18790-01105: FUSE (4A)

■ **PAS SENSOR (ONLY IF DTC(s) B1214-B1217 ARE FOUND UPON INSPECTION)**

MODEL	PRODUCTION RANGE	EXTERIOR COLOR	PREVIOUS P/N	NEW P/N	Remark
Non-Turbo Veloster (FS)	07/07/2011 ~ 01/25/2013	N9S (Grey)	957202V100N9S	957202V105DGQH	
		All other colors	957202V100 + color code	957202V105 + color code + QH	
	03/18/2013 ~ 11/13/2013	All	957202V300 + color code	957202V301 + color code + QH	
Turbo Veloster (FS)	12/09/2011 ~ 02/02/2013	All	957202V200 + color code	957202V205 + color code + QH	Body color
			957202V200S2G 957202V2ASS2G	957202V205S2GQH	Matte Grey
	03/18/2013 ~ 10/15/2013	All	957202V400 + color code	957202V401 + color code + QH	Body color
			957202V400S2G 957202V4ASS2G	957202V401S2GQH	Matte grey

NOTE 1: Enter VIN number into Web Parts Catalog to find the original P/N for ordering. Information can be found under the rear bumper section for Trim.

NOTE 2: See page 12 in Appendix for all sensor parts and respective colors.

SUBJECT: REAR PARKING ASSIST SENSOR (RPAS) INSPECTION AND FUSE/SENSOR REPLACEMENT (RECALL 242)

Warranty Information:

MODEL	OP. CODE	OPERATION	OP TIME	NATURE CODE	CAUSE CODE
Veloster (FS)	31D026R1	REAR PARKING ASSIST SYSTEM INSPECTION AND FUSE & LABEL REPLACEMENT ONLY	0.3 M/H	I11	ZZ3
	31D026R2	REAR PARKING ASSIST SYSTEM INSPECTION AND FUSE & LABEL & PAS SENSOR (1 EA) REPLACEMENT	0.9 M/H		
	31D026R3	REAR PARKING ASSIST SYSTEM INSPECTION AND FUSE & LABEL & PAS SENSOR (2 EA) REPLACEMENT			
	31D026R4	REAR PARKING ASSIST SYSTEM INSPECTION AND FUSE & LABEL & PAS SENSOR (3 EA) REPLACEMENT			
	31D026R5	REAR PARKING ASSIST SYSTEM INSPECTION AND FUSE & LABEL & PAS SENSOR (4 EA) REPLACEMENT			

NOTE 1: Submit Claim on Claim Entry Screen as “Campaign” type.

NOTE 2: If a part is found in need of replacement while performing this recall and the affected part is still under warranty, submit a separate claim using the same repair order. If the affected part is out of warranty, submit a Prior Approval request for goodwill consideration prior to performing the work.

NOTE 3: This TSB includes Repair validation photos. Op times include VIN, Mileage, and Repair validation photos as outlined in the Digital Documentation Policy.

NOTE 4: The incident parts are subject to callback through the normal Warranty Technical Center (WTC) parts return process. **Claim is subject to debit if the part is not returned.**

NOTE 5: The labor time for 1-4 sensor(s) replacement is the same due to the close proximity of the sensors in the same neighboring area.

Refer to the link below for guided video information:

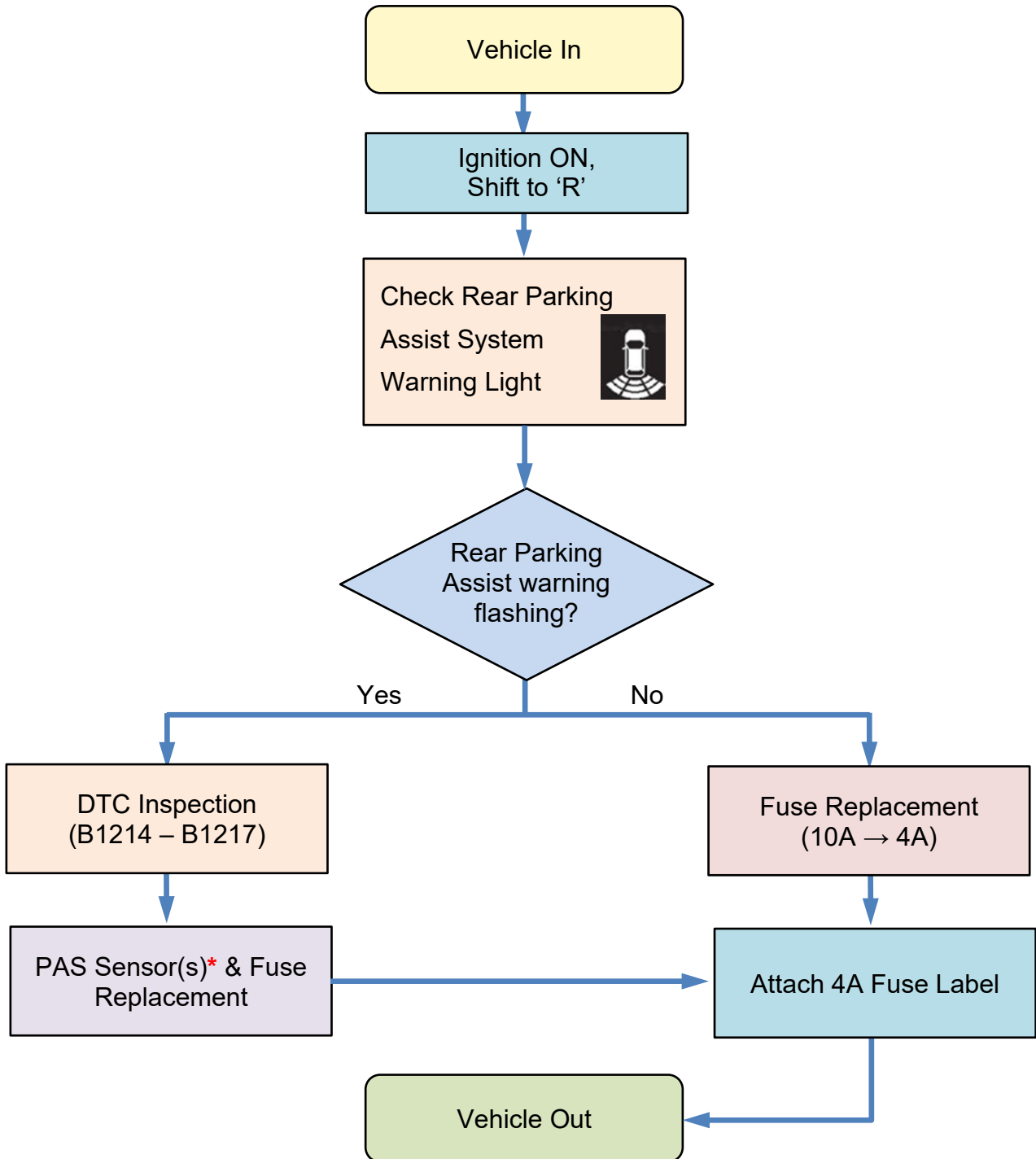
[Hyundai Service Learning – Recall 242 Service Procedure](#)

STUI



This TSB includes Repair validation photos. Refer to the latest Warranty Digital Documentation Policy for requirements.

I. Inspection Procedure:



*Replace Rear Parking Assist sensor(s) according to DTC code (B1214 – B1217)

SUBJECT: REAR PARKING ASSIST SENSOR (RPAS) INSPECTION AND FUSE/SENSOR REPLACEMENT (RECALL 242)

1. Turn the ignition ON and move the shift lever to 'R' and then check the cluster.

Case 1: Normal operation.

When moving the shift lever to 'R', the parking assist warning light does not flash. If it does not flash, this is normal.

Only fuse & label replacement are necessary.



Proceed to section II for Fuse Replacement and Label Attachment.

Case 2: Abnormal operation.

When moving the shift lever to 'R', the parking assist warning light flashes. This is not normal.







Inspect the DTC and replace the fuse, label, and PAS sensor(s) according to the DTC codes (B1214~1217) shown to the right.

NOTICE

Refer to the PAS sensor location that is related to the DTC code.

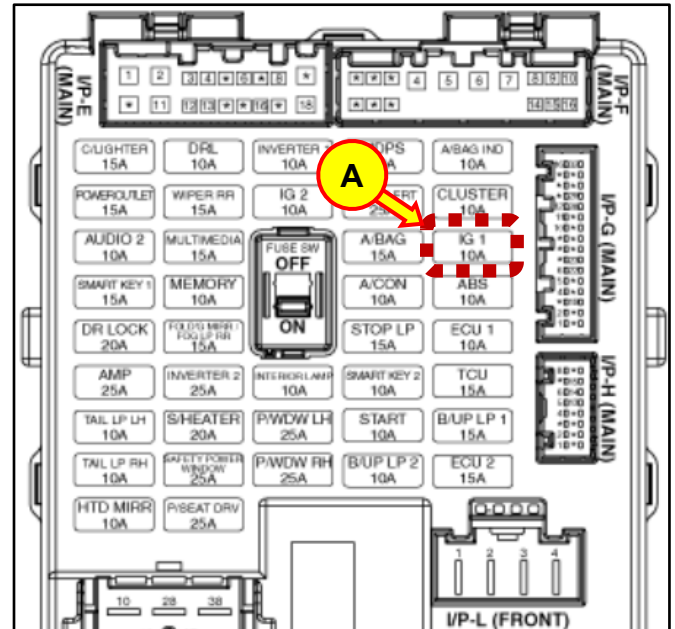
Proceed to section III for sensor(s) replacement & then to section II for Fuse Replacement & Label Attachment.

DTC CODE	PAS SENSOR LOCATION
B1214 (REAR L/H)	
B1215 (REAR CENTER L/H)	
B1216 (REAR CENTER R/H)	
B1217 (REAR R/H)	

SUBJECT: REAR PARKING ASSIST SENSOR (RPAS) INSPECTION AND FUSE/SENSOR REPLACEMENT (RECALL 242)


II. Fuse Replacement and Label Attachment (for all vehicles):

- 2. Remove the smart junction box cover.
- 3. Remove the IG1 10A fuse (A) and install the supplied 4A fuse.

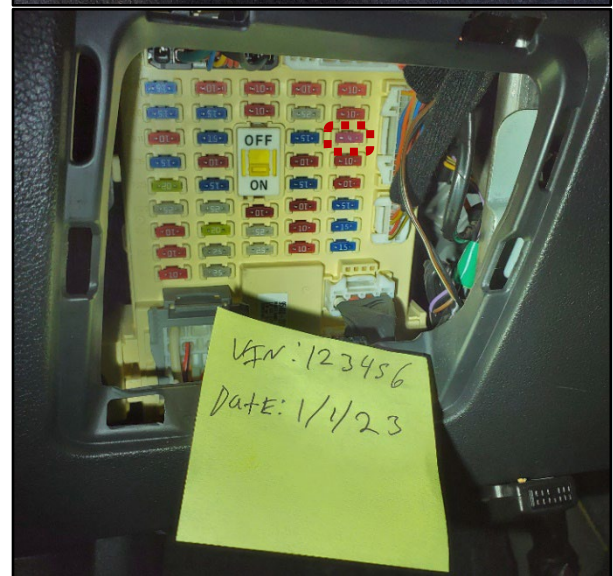
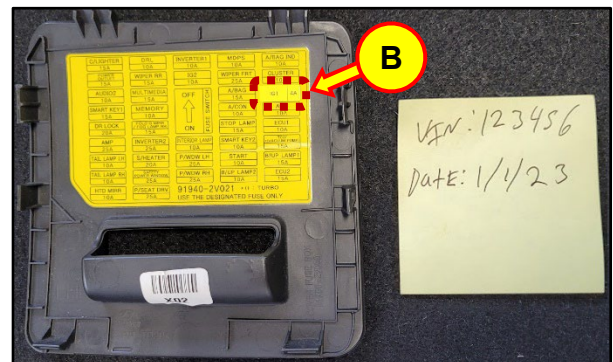


- 4. Attach the supplied fuse label (B) sticker (4A) onto the cover.

Service procedure has been completed.

STUI 

Using STUI, take photos of the installed 4A fuse and the fuse label sticker attached to the cover. Include in the photos a piece of paper containing the last 6 digits of the VIN and the date of the repair. Upload the photos to STUI.

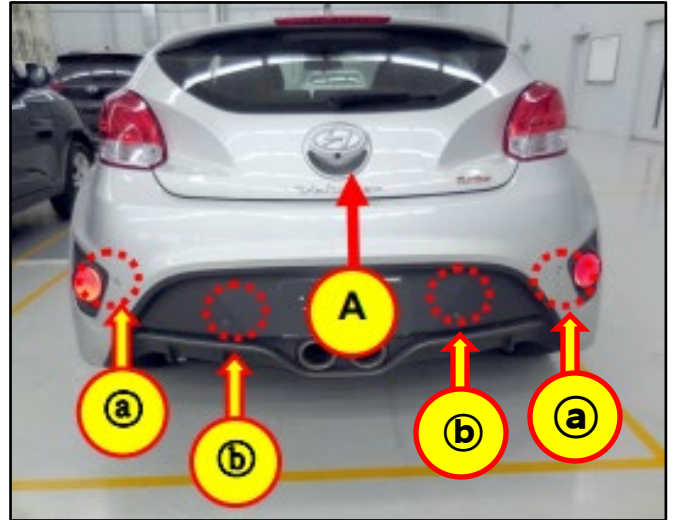


SUBJECT: REAR PARKING ASSIST SENSOR (RPAS) INSPECTION AND FUSE/SENSOR REPLACEMENT (RECALL 242)

III. PAS Sensor Replacement (if DTC(s) B1214-1217 are present):

5. Open the rear hatch (A).

- ① body colored PAS sensors (both non-turbo and turbo models).
- ② black or matte grey colored PAS sensors (only applies to Turbo models).



6. Remove the rear combination lamp mounting bolts (B) on both sides.

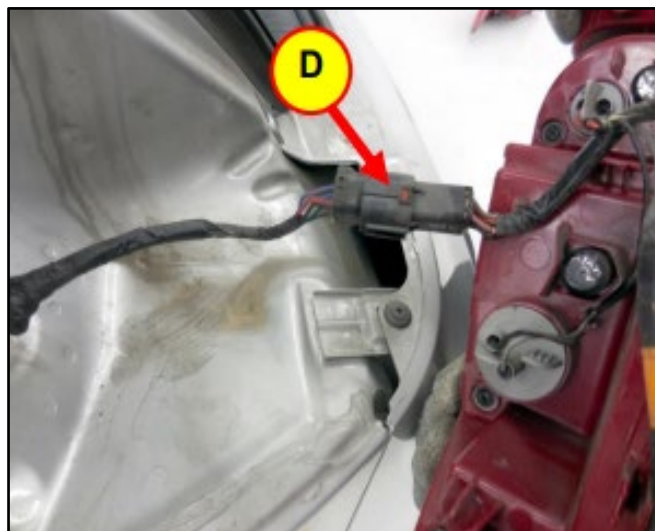


7. Push the rear combination lamps (C) towards the rear of the vehicle and remove the lamps on both sides.



SUBJECT: REAR PARKING ASSIST SENSOR (RPAS) INSPECTION AND FUSE/SENSOR REPLACEMENT (RECALL 242)

8. Disconnect the rear combination lamp connectors (D) on both sides.



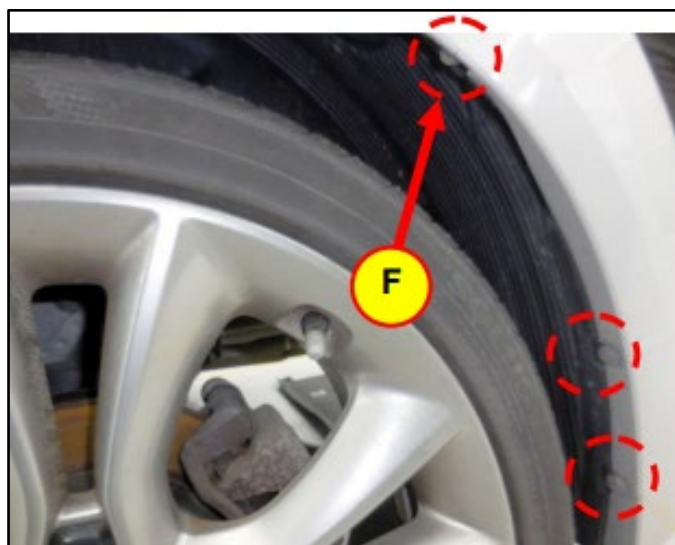
9. Loosen the rear bumper upper mounting fasteners (E) on both sides.



10. Loosen the rear bumper side mounting clips and screws (F) on both sides.

***i* Information**

If mud guards are installed, an additional clip holding the mud guard to the bumper is located on the bottom.



SUBJECT: REAR PARKING ASSIST SENSOR (RPAS) INSPECTION AND FUSE/SENSOR REPLACEMENT (RECALL 242)

11. Loosen the rear bumper lower mounting fasteners (G).

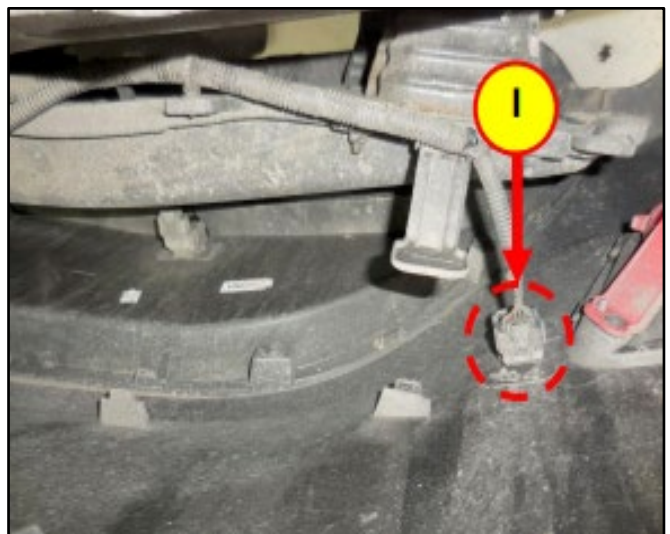


12. Remove the rear bumper (H) and locate the license plate lamp(s) and PAS sensors.



13. Disconnect the license plate lamp connector(s) and PAS sensor connectors (I), located on the inside of the rear bumper.

Make sure the bumper is positioned to prevent any damage to the bumper during the PAS sensor replacement.



SUBJECT: REAR PARKING ASSIST SENSOR (RPAS) INSPECTION AND FUSE/SENSOR REPLACEMENT (RECALL 242)

14. Remove the PAS sensor by pulling both sides of the attachment hooks (J) away from the sensor as shown.



15. Install the new PAS sensor (K).

Ensure the correct color sensor(s) are installed in the correct locations and that the rubber seal on the sensor is firmly installed without any damage.

Repeat step 14 for any additional sensor(s) needing replacement.



NOTICE

Debris may be found on the PAS sensor opening. Clean any debris as it may prevent proper installation of the sensor(s).

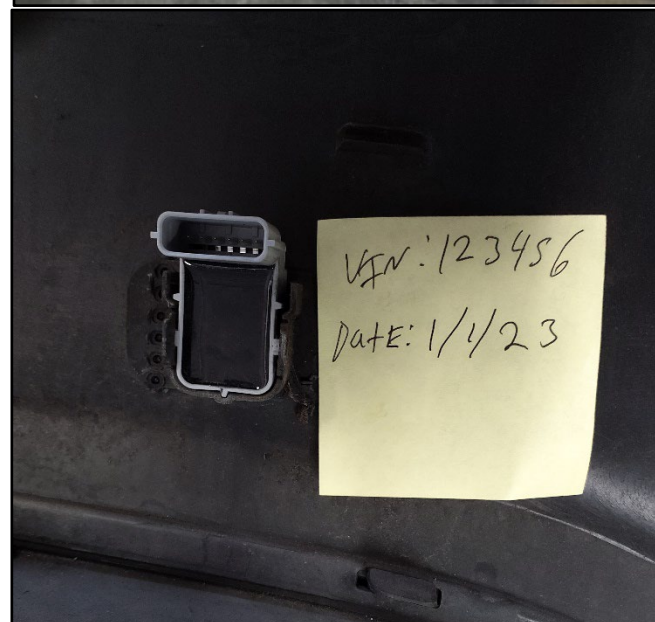
STUI



Using STUI, take photos of the new PAS sensor(s) installed.

Include in the photos a piece of paper containing the last 6 digits of the VIN and the date of the repair.

Upload the photo(s) to STUI.



SUBJECT: REAR PARKING ASSIST SENSOR (RPAS) INSPECTION AND FUSE/SENSOR REPLACEMENT (RECALL 242)

16. Once all the PAS sensors have been installed, reinstall all removed parts in reverse order of removal.

Perform a DTC check to confirm no active DTCs are present.

Go to Section II for fuse replacement & label attachment.



SUBJECT: REAR PARKING ASSIST SENSOR (RPAS) INSPECTION AND FUSE/SENSOR REPLACEMENT (RECALL 242)

Appendix

Previous Part Number	Current Part Number	Color Code	Body Color	Sensor Color
957202V100N9S	957202V105DGQH	DG	Sonic Silver(N9S)	Dark Gray
957202V100MZH	957202V105MZHQH	MZH	Phantom Black	Black
957202V100N9S	957202V105N9SQH	N9S	Sonic Silver	Black
957202V100P9R	957202V105P9RQH	P9R	Veloster Red	Red
957202V100PGU	957202V105PGUQH	PGU	White Crystal	White
957202V100R9A	957202V105R9AQH	R9A	Vitamin C	Black
957202V100RHM	957202V105RHMQH	RHM	Sleek Silver	Silver
957202V100SYY	957202V105SYYQH	SYY	Sunflower	Black
957202V100UU9	957202V105UU9QH	UU9	Blue Ocean	Blue
957202V100VE9	957202V105VE9QH	VE9	Green Apple	Black
957202V200MZH	957202V205MZHQH	MZH	Phantom Black	Black
957202V200P9R	957202V205P9RQH	P9R	Veloster Red	Red
957202V200R9A	957202V205R9AQH	R9A	Vitamin C	Black
957202V200RHM	957202V205RHMQH	RHM	Sleek Silver	Silver
957202V200S2G 957202VASS2G	957202V205S2GQH	S2G	Young Gun	Dark/Matte Gray (Black)
957202V200SA2	957202V205SA2QH	SA2	Marmalade	Black
957202V200SG2	957202V205SG2QH	SG2	Battleship	Gray
957202V200SW2	957202V205SW2QH	SW2	Storm Trooper	White
957202V200UU9	957202V205UU9QH	UU9	Blue Ocean	Blue
957202V300MZH	957202V301MZHQH	MZH	Phantom Black	Black
957202V300N9S	957202V301N9SQH	N9S	Sonic Silver	Black
957202V300P9R	957202V301P9RQH	P9R	Veloster Red	Red
957202V300PGU	957202V301PGUQH	PGU	White Crystal	White
957202V300R9A	957202V301R9AQH	R9A	Vitamin C	Black
957202V300RHM	957202V301RHMQH	RHM	Sleek Silver	Silver
957202V300SYY	957202V301SYYQH	SYY	Sunflower	Black
957202V300UU9	957202V301UU9QH	UU9	Blue Ocean	Blue
957202V400MZH	957202V401MZHQH	MZH	Phantom Black	Black
957202V400P9R	957202V401P9RQH	P9R	Veloster Red	Red
957202V400R9A	957202V401R9AQH	R9A	Vitamin C	Black
957202V400RHM	957202V401RHMQH	RHM	Sleek Silver	Silver
957202V400S2G 957202V4ASS2G	957202V401S2GQH	S2G	Young Gun	Dark/Matte Gray (Black)
957202V400SW2	957202V401SW2QH	SW2	Storm Trooper	White
957202V400SYY	957202V401SYYQH	SYY	Sunflower	Black
957202V400UU9	957202V401UU9QH	UU9	Blue Ocean	Blue