

House Battery Switch Upgrade

Caution: This procedure involves working with exposed and energized electrical cables and terminals. This should only be performed by experienced electricians.

Required Tools:

Ratchet
17mm socket
18mm socket
1/2 socket
1/2" wrench
7/16" wrench
Drill
Stepper bits
#30 High speed bit

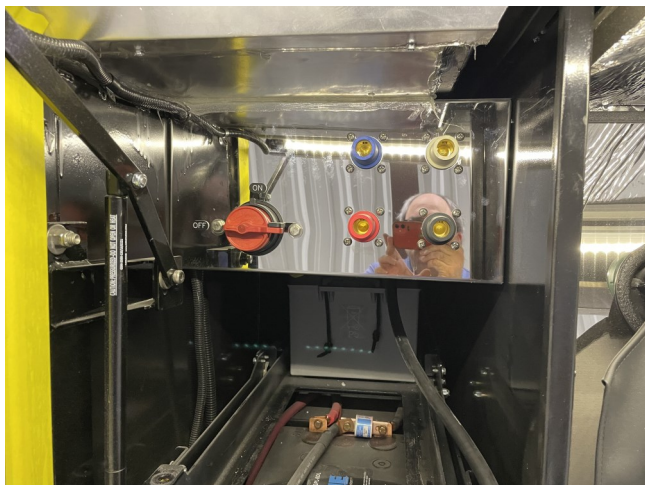
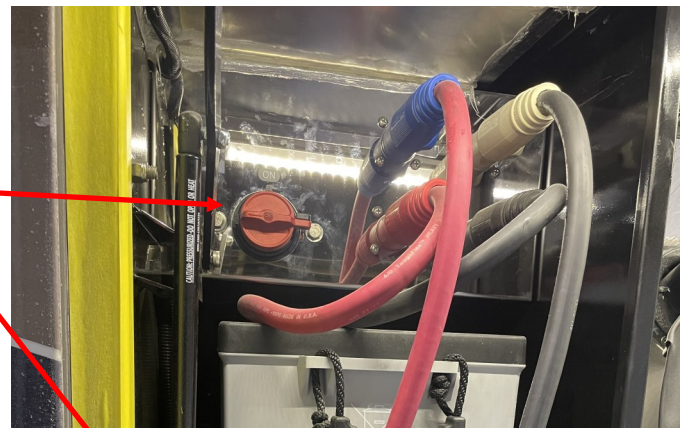
Required Parts:

Switch NC# 314400
Switch Standoffs X 4
Label plate
1/4" x 20 3" screws X 4
1/4 flat washer X 4
1/4 nyloc nut

Optional:

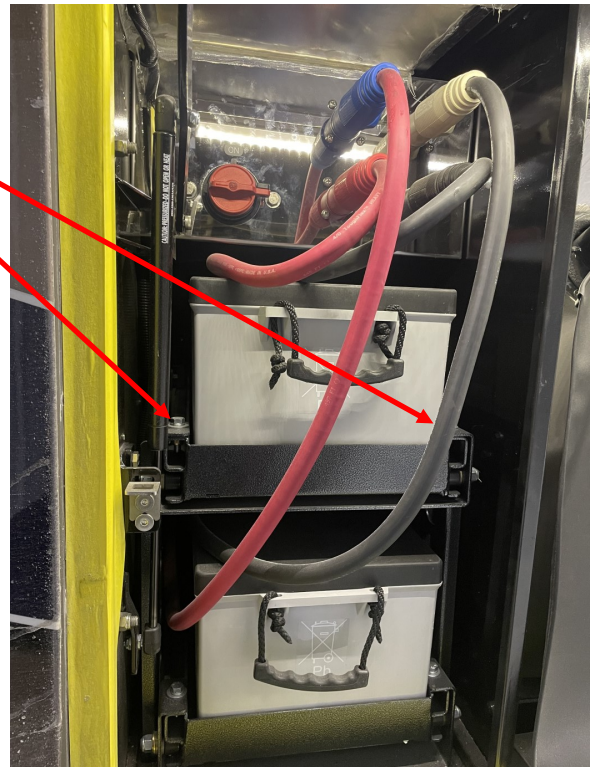
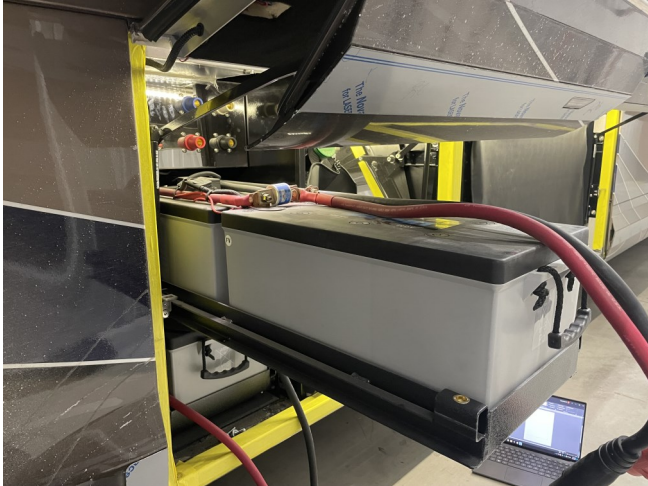
Non-residue electrical insulating tape such as
TESA Cloth Electrical Tape

1. Unplug from shore power and shut off generator
2. Switch both battery banks to Off
3. Disconnect battery cables from panel by rotating connector shell counter clockwise until it stops, then pull straight out away from the coach.



4. Remove the two upper tray retaining bolts

5. Slowly and carefully pull upper battery tray to full extension. Watch battery terminals to ensure that they clear the stainless panel above.



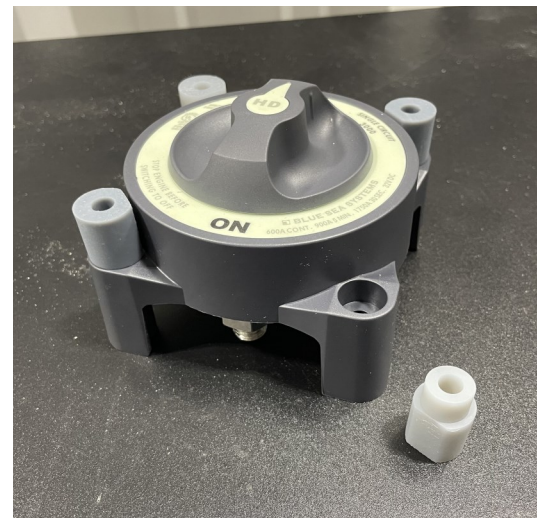
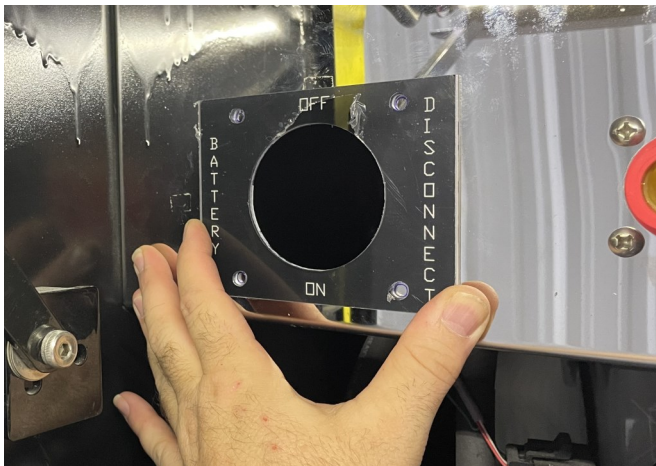
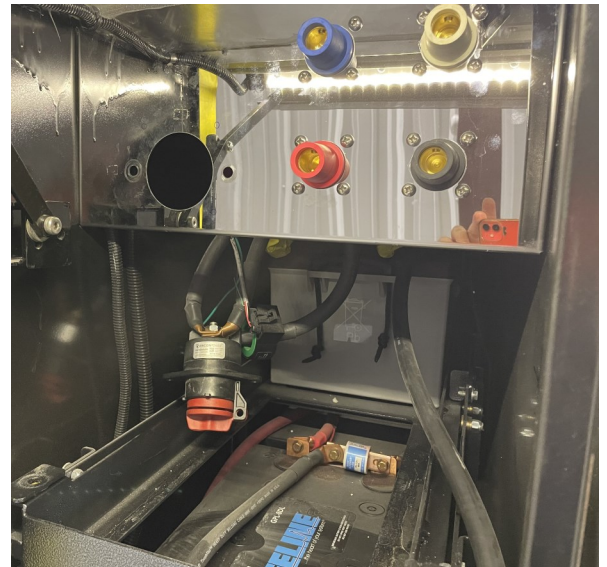
6. Take notes or pictures of the first battery terminals that you can use to ensure reassembly in the same configuration.

7. Carefully disconnect all cables from the first battery's terminals. These cables and terminals will be energized so be aware of your tool clearances at all times and make sure you do not contact the opposite terminal, other cables, or any conductive material such as the metal door or frame.

8. Wrap remaining battery cables in electrically insulating non-residue tape or remove the remaining batteries using caution and continuing to note the terminal configurations for reassembly



9. Remove two mounting bolts and un-mount battery switch.
10. Disconnect cables from battery switch taking note of which two large cables were together and which one was separate.
11. Use label plate as a template to mark and drill 4 mount holes.



12. Attach cables to replacement switch.
13. Mount switch, switch standoffs, and label plate to panel.
14. Reinstall batteries and reconnect battery cable connectors.
15. Switch on house battery switch and check for house power.
16. Switch on chassis batteries

