



GROUP	MODEL
Safety Recall Campaign	2023MY Telluride (ON)
NUMBER	DATE
SC262	February 2023

SAFETY RECALL CAMPAIGN

2ND ROW SEAT SAB WIRE HARNESS INSPECTION/REPAIR (SC262)

SUBJECT:

This bulletin provides information to inspect and, if necessary, secure or replace the LH and RH 2nd-row seat side airbag (SAB) wire harness on certain 2023MY Telluride (ON) vehicles produced from September 1, 2022 through January 23, 2023. The side airbag wire harness contained in the second-row seat cushion assembly in the subject vehicles was manufactured with the incorrect length. As a result, the wire harness can become damaged if it contacts the seat frame when the seat is folded or adjusted. If the wire harness is damaged, the second-row seat side airbag(s) may not deploy in a crash sufficient to warrant such a deployment. Non-deployment of the second-row seat side airbag(s) increases the risk of injury. Follow the procedure outlined in this publication to inspect and secure or replace the 2nd row seat SRS wire harness. Before conducting the procedure, verify that the vehicle is included in the list of affected VINs.

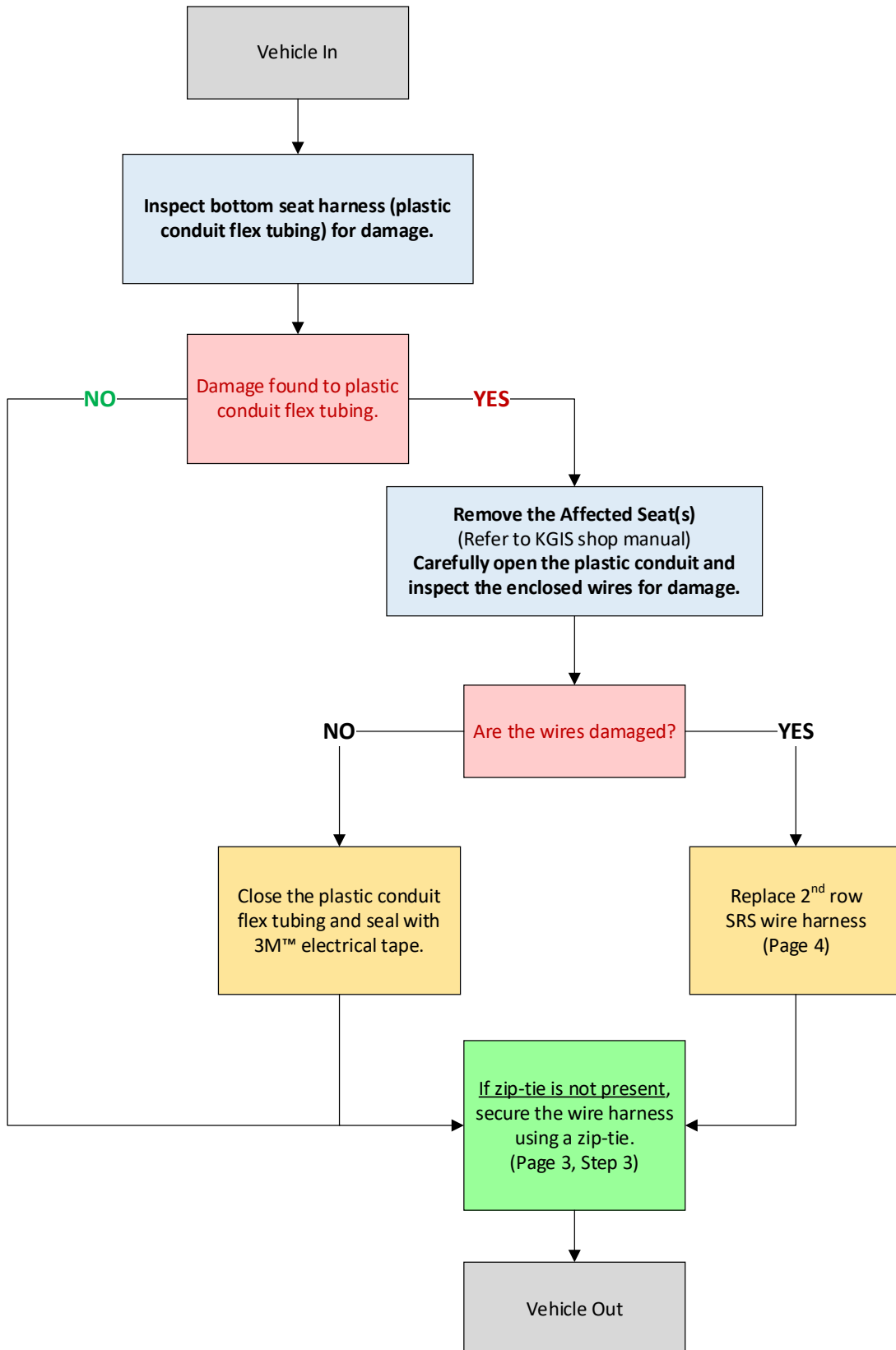
NOTICE

There is no charge to the vehicle owner for this repair. Under applicable law, you may not sell or otherwise deliver any affected vehicle until it has been repaired pursuant to the procedures set forth in this bulletin.

NOTICE

To assure complete customer satisfaction, always remember to refer to WebDCS Warranty Coverage (validation) Inquiry Screen (Service → Warranty Coverage → Warranty Coverage Inquiry) for a list of any additional campaigns that may need to be performed on the vehicle before returning it to the customer.

Flowchart:



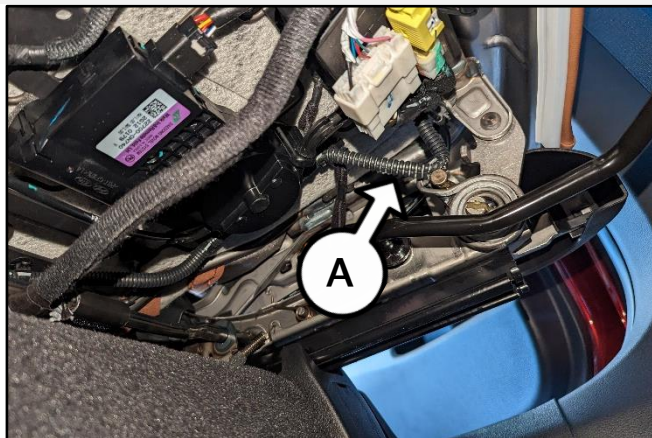
SUBJECT:

2nd ROW SEAT WIRE HARNESS INSPECTION/REPAIR (SC262)**Inspection Procedure:**

1. Locate the 2nd row seat SAB wire harnesses (A).

Note: There are two (2) per vehicle, left (LH) and right (RH) sides.

2. Inspect the SAB wire harness (A) plastic conduit flex tubing for damage. (Both LH & RH sides)



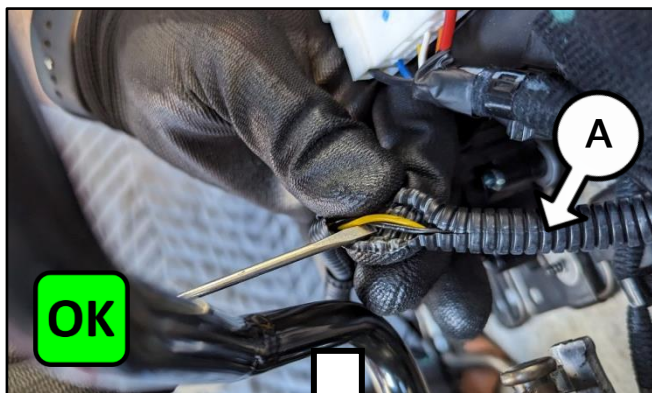
If damage to the SAB harness (A) conduit flex tubing is not present (OK), proceed to step 3.

If damage to the conduit flex tubing (A) is present (NG) (as shown), disconnect the battery (-) terminal and refer to the shop manual in KGIS to tilt the seat backwards. Carefully cut the plastic conduit flex tubing (as to not damage the enclosed wires) and inspect the two (2) inner wires:



If damage to the wire(s) is not present (as shown) (OK), close the SAB harness (A) conduit flex tubing by wrapping it with 3M™ electrical tape, and then proceed to step 3.

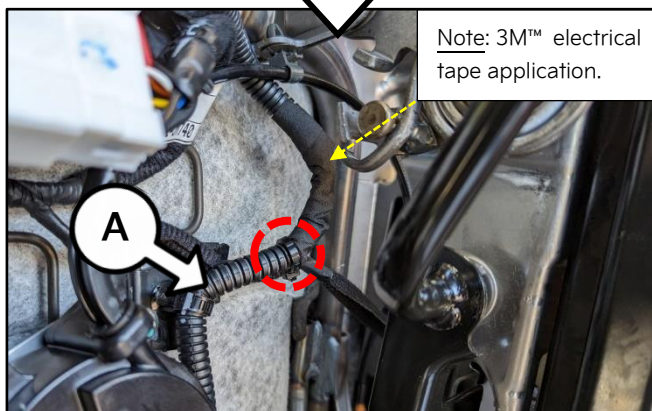
If damage to the wire(s) is present (wires are cut/exposed) (NG), proceed to the 'Repair Procedure' on page 4 to replace the SRS seat harness.



3. Verify that the SAB wire harness is zip-tied to the adjacent wire harness/seat frame as shown, to prevent the wire harness from contacting or getting caught on the seat mechanism.

ⓘ IMPORTANT

Ensure there is sufficient clearance between the seat side-frame and SAB wire harness before securing harnesses with a zip-tie.



Repair Procedure:

1. Disconnect negative (-) battery terminal.
2. Remove the rear seat back cover referring to the "Body (Interior and Exterior) → Rear Seat → Rear Seat Back Cover → Removal and Installation" chapter in the applicable Shop Manual on KGIS.
3. Detach the SAB wire harness clips from the bottom and back of the seat frame.

WARNING

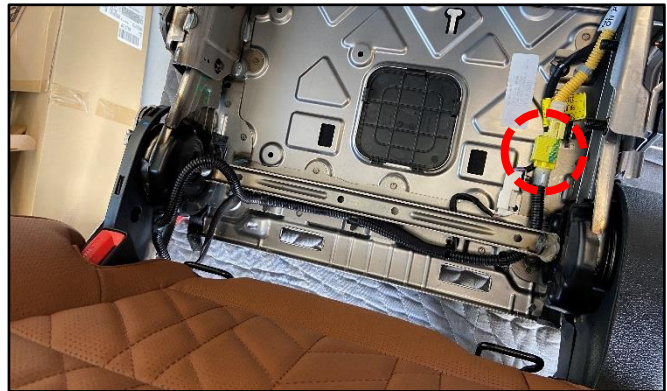
There are several sharp locations on the seat frame which may result in injuries or damage to the harness.



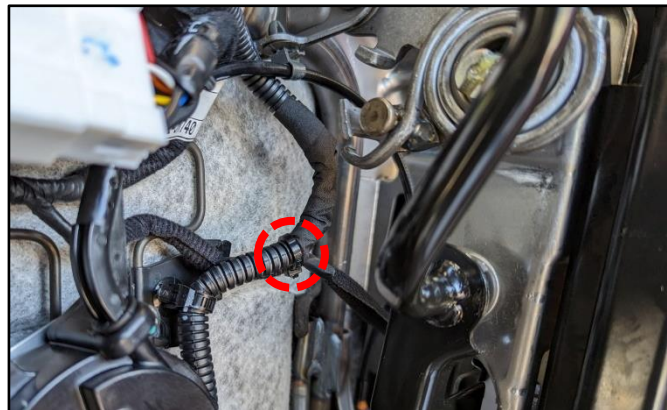
4. Disconnect the SAB wire harness connector on the bottom and back of the seat.

Replace the seat wire harness in the reverse order of removal.

Note: Ensure proper routing and that all retaining clips are properly seated onto the seat frame.



5. Secure the SAB wire harness to the adjacent seat cushion wire harness/seat frame as shown using a zip-tie, to prevent the wire harness from contacting or getting caught on the seat mechanism.
6. Reinstall all removed parts in the reverse order of removal. Refer to KGIS as needed.
7. Confirm normal operation of the 2nd row seats.






SUBJECT:

2nd ROW SEAT WIRE HARNESS INSPECTION/REPAIR (SC262)**AFFECTED VEHICLE RANGE:**

Model	Production Date Range
Telluride (ON)	September 1, 2022 to January 23, 2023

REQUIRED PART:

Part Name	Part Number	Figure	Qty.	Comments
2 nd Row Cushion Wire Harness (Left Side)	89551 S9510QQK		1	Bench (Non-Vent)
	89551 S9610QQK			Captain (Non-Vent)
	89551 S9710QQK			Captain (Vent)
2 nd Row Cushion Wire Harness (Right Side)	89651 S9510QQK			Bench & Captain (Non-Vent)
	89651 S9710QQK			Captain (Vent)
Zip-tie	N/A		1	Locally Sourced
Electrical Tape 3M™	N/A*			

*Dealers should source 3M™ Scotch® electrical tape and zip-ties at local parts store.

WARRANTY INFORMATION:

N Code: N99 C Code: C99

Claim Type	Causal P/N	Qty.	Repair Description	Labor Op Code	Op Time	Replacement P/N	Qty.
R	89551 S9510	0	(SC262) 2 nd Row Seat Harness Inspection (OK) (Zip-tie present)	230A0410	0.2 M/H	N/A	0
			(SC262) 2 nd Row Seat Harness Inspection (OK) + (Zip-tie not present) (LH and/or RH)	230A0411	0.3 M/H		
	89551 S9510		(SC262) 2 nd Row Seat Harness Inspection <u>and</u> Wire (NG) + Add 3M tape + Zip-tie (One side)	230A04R0	0.4 M/H	N/A	0
			(SC262) 2 nd Row Seat Harness Inspection <u>and</u> Wire (NG) + Add 3M tape + Zip-tie (Both sides)	230A04R1	0.6 M/H		

Continued page 6...



SUBJECT: **2ND ROW SEAT WIRE HARNESS INSPECTION/REPAIR (SC262)**

Claim Type	Causal P/N	Qty.	Repair Description	Labor Op Code	Op Time	Replacement P/N	Qty.
R	89551 S9510		(SC262) 2 nd Row Seat Harness Inspection (NG) + Harness Wire Replacement + Add Zip-tie (Captain Chair, One Side)	230A04R2	1.2 M/H	89551 S9610QQK or 89551 S9710QQK or 89651 S9510QQK or 89651 S9710QQK	1
			(SC262) 2 nd Row Seat Harness Inspection (NG) + Harness Wire Replacement + Add Zip-tie (Captain Chair, Both Sides)	230A04R3	1.9 M/H	89551 S9610QQK or 89551 S9710QQK	1
						89651 S9510QQK or 89651 S9710QQK	1
R	89551 S9510		(SC262) 2 nd Row Seat Harness Inspection (NG) + Harness Wire Replacement + Add Zip-tie (Bench Seat, One Side)	230A04R4	1.5 M/H	89551 S9510QQK or 89651 S9510QQK	1
			(SC262) 2 nd Row Seat Harness Inspection (NG) + Harness Wire Replacement + Add Zip-tie (Bench Seat, Both Sides)	230A04R5	2.4 M/H	89551 S9510QQK or 89651 S9510QQK	1

Note: Refer to Warranty Bulletin 2023-05 for claim submission procedures. For locally sourced 3M™ electrical tape and zip-ties, use sublet code 'X1' with a maximum of \$0.20 for bench seat or for each captain chair, to complete SC262.

NOTICE

VIN inquiry data for this repair is provided for tracking purposes only. Kia retailers should reference SC262 when accessing the WebDCS system.

