



# INSTRUCTIONS TO PERFORM CAMPAIGN 172

## Models Affected:

Certain 2023 model year Winnebago Industries Revel® (B-Series) motor homes.

These motor homes were manufactured May 12, 2022 through July 29, 2023.

## Kit Includes:

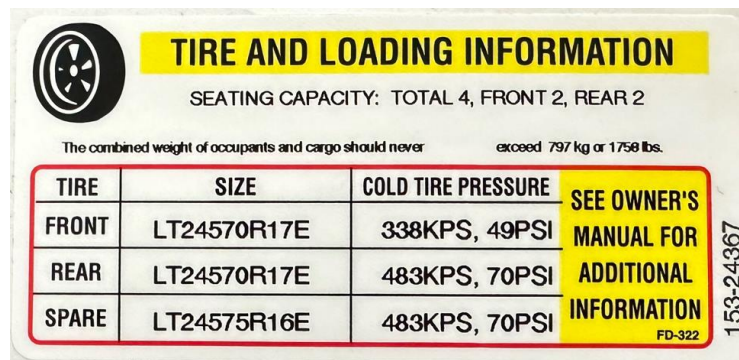
- (1) Tire and Loading Information Label
- (1) Winnebago Altered Vehicle Label
- Instructions

## Procedure:

The affected vehicles were produced with an incorrect Tire and Loading information label (Label - 1) and mistakenly had a Certification Label (Label - 2) installed vs the required Winnebago Altered vehicle label (Label - 3). Both Labels are located inside the driver's side door jamb, on the forward face of the B-Pillar. These labels must be removed or covered with the correct one.

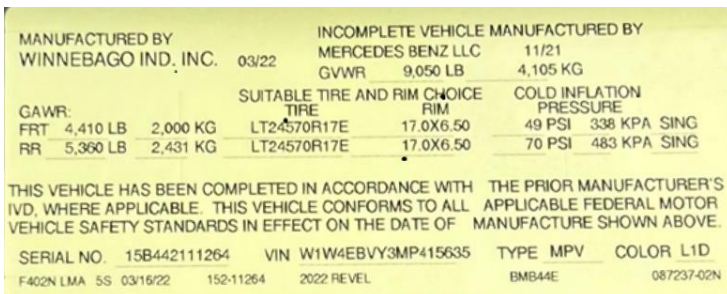
### Tire and Loading Information Label (Label 1)

*\* Provided in kit*



### Incorrect: Certification Label (Label 2)

*\* Installed on vehicle*



### Correct: Winnebago Altered Vehicle Label (Label 3)

*\* Provided in kit*



1. Remove and discard existing Tire and Loading Information Label, this will reveal the OEM chassis manufacturer's Tire Inflation Pressure Label. See Photos A and B



2. Clean the OEM label face with isopropyl alcohol and cover the OEM Tire Inflation Pressure Label with the new Tire and Loading Information Label (Label 1). See Photo C



3. Locate the Certification Label (Label - 2), clean the label face with isopropyl alcohol and cover it with the new Winnebago Altered Vehicle Label (label – 3) See Photo D.



*After the new Winnebago Altered Vehicle Label is installed, please complete the enclosed pre-addressed postage paid postcard and mail to Winnebago Industries®.*