



Safety Recall Action Notice 605 Issue 1 - 02.2023

Subject: Install Cooling Fan Heat Shield			
Bulletin Number	Models Affected	VIN Range	Markets Affected
605	Speed Triple 1200 RS, Speed Triple 1200 RR	Up to VIN BJ9267	All Markets Except Brazil

Background Information

Internal investigations have identified the requirement to install a heat shield to the cooling fan.

Dealers are requested to test the cooling fan operation, install the cooling fan heat shield and update the Chassis ECM calibration as described in the procedure below.

Dealers are also requested to print the Owner's Handbook addendum, as shown in Appendix A, for each repaired motorcycle and provide a hard copy to the customer.

The Owner's Handbook addendum will also be available to view and download from the Triumph Technical Information website.

Customer Contact Instructions

NOTICE

STOP DELIVERY OF AFFECTED MOTORCYCLES IMMEDIATELY.

DO NOT deliver a motorcycle affected by this Safety Recall Action Notice to a customer until you have completed, or confirmed completion of, the procedures described in this Safety Recall Action Notice.

Delivering a motorcycle subject to an outstanding Safety Recall Action Notice may contravene local or national laws in your market, territory or country.

Triumph subsidiaries and distributors must instigate a Safety Recall Action in their country in accordance with the national recall code of practice. For vehicles in dealer stock, the safety recall MUST be actioned before delivery to the customer.

Dealers are to prioritise repair of customer owned motorcycles before any unsold motorcycles.

Identification of Affected Motorcycles

Speed Triple 1200 RS and Speed Triple 1200 RR models in the VIN range shown above.

Note:

- Some affected motorcycles listed in the VIN range will have been modified and repaired by Triumph prior to their release from the factory.
- Unmodified motorcycles can be identified by checking the 'VIN Enquiry' on www.triumphonline.net.

Warranty Claim Instructions

Notice Number	Fault Code	Repair Code	Description	Repair Allowance	Time
605	021045905	99605	SB605 - Install Cooling Fan Heat Shield	0.67 hr	

Genuine Parts Information

Notice Number	Part Number	Part Description	Quantity
605	T2107778	Parts Kit, Heatshield Consisting of: Spares kit, heatshield - Qty 1 Bolt, RHHF, M6 x 1,00 x 25, Enc - Qty 3 Screw, Pan/hd, M6 x 1,00 x 25, Enc - Qty 2	1

Parts Ordering Instructions

For Triumph Subsidiary and Overseas Distributor dealers using Triumph Warranty On-Line with Parts Auto Ordering Flag switched on: Order all repair parts by submitting a New Prior through the Warranty On-Line system. Entering the above repair code in a New Prior will automatically add the parts required and labour times for this Safety Recall Action Notice.

For Overseas Distributor dealers NOT using Triumph Warranty On-Line or for Overseas Distributor dealers using Triumph Warranty On-Line with Parts Auto Ordering Flag switched off: Orders should be placed using the normal parts ordering procedure.

Genuine Parts Return

Dealer to retain parts for 90 days. All parts must be stored in a secure, non-public accessed area and correctly identified with a completed warranty label. Thereafter the parts must be rendered unusable prior to scrapping.

Other Instructions

Once completed, please mark the Service Record Book that the requirements of this Safety Recall Action Notice have been complied with.

Before returning the motorcycle to the customer, download the latest calibration to the engine electronic control module, chassis electronic control module (if fitted), keyless electronic control module (if fitted) and instruments (if applicable) using the current version of the Triumph diagnostic software.

Test the Cooling Fan Operation

WARNING

Make sure the motorcycle is stabilised and adequately supported.
Do not support the motorcycle on any ancillary component, the exhaust system or any other non structural parts of the motorcycle frame.
A correctly supported motorcycle will help prevent it from falling.
An unstable motorcycle may fall resulting in motorcycle damage, serious injury or death.

Remove the seat as described in the Service Manual.

Using the Triumph Diagnostic Tool (TDT), navigate to the Function Tests within the Chassis ECM Diagnostics. Select Cooling Fan 1 and start the test. The cooling fan should start operating. Stop the test.

If the test is satisfactory, move on to the next steps in this Safety Recall Action Notice. If the cooling fan does not operate, collate any stored DTCs from all diagnostic areas and contact Triumph Warranty.

Updating the Chassis ECM Calibration

CAUTION

The cooling fan operates automatically when the engine is running, and may continue to operate after the engine has been switched off.
Always keep hands and clothing away from the fan.
Contact with the rotating fan could result in minor or moderate injury.

Update the Chassis ECM calibration using Triumph Diagnostic Tool (TDT) version 2022-12 or later. Included in TDT version 2022-12, is an updated Chassis ECM calibration for the Speed Triple 1200 models. This calibration changes the operation of the cooling fan. If the cooling fan is running when the engine is stopped or the ignition switched off, the cooling fan will now continue to run for up to 2 minutes. This change in operation will affect all Speed Triple 1200 RS and RR motorcycles which have the Chassis ECM updated using TDT version 2022-12 or later.

Make sure the relevant Owner's Handbook addendum, as shown in Appendix A, has been provided to the customer, and the customer has had the change of functionality explained to them.

The Owner's Handbook addendum will also be available to view and download from the Triumph Technical Information website.

Install the Cooling Fan Heat Shield

WARNING

Make sure the motorcycle is stabilised and adequately supported.
Do not support the motorcycle on any ancillary component, the exhaust system or any other non structural parts of the motorcycle frame.
A correctly supported motorcycle will help prevent it from falling.
An unstable motorcycle may fall resulting in motorcycle damage, serious injury or death.

WARNING

If the motorcycle has recently been running, some components may be hot to the touch.
Contact with the hot components may cause damage to exposed skin.
To avoid skin damage, always allow the hot parts to cool before working on the motorcycle.

Before disconnecting the battery or removing a fuse for any reason note and record the rider's settings.

⚠ WARNING

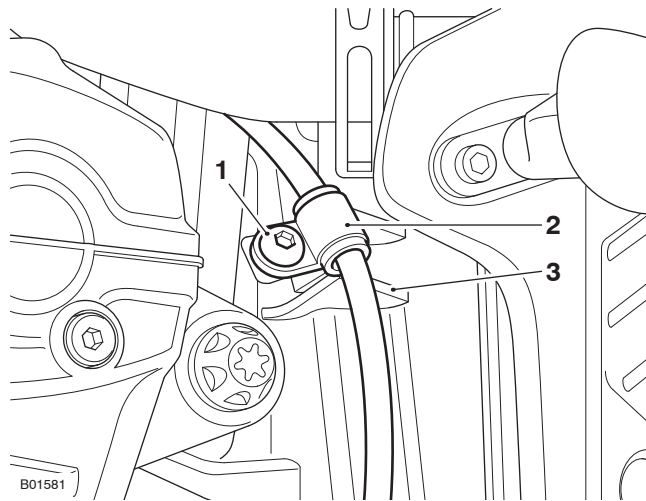
If the battery has been disconnected or the fuses removed for any reason advise the rider to confirm the original mode settings have been correctly set.

Failure to reset the motorcycle to the rider's preferred rider mode settings and subsequently being ridden may cause loss of motorcycle control and an accident.

NOTICE

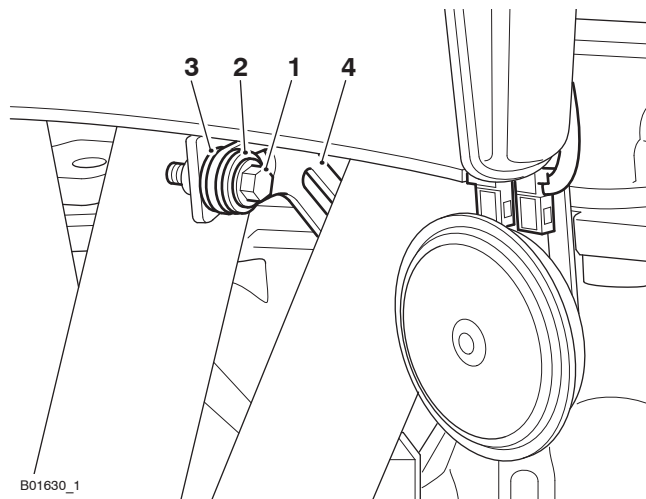
The coolant hoses do not need to be removed for the purpose of this instruction.

1. Disconnect the battery as described in the Service Manual.
2. Remove the front side panels as described in the Service Manual. Discard the two fixings.
3. Remove the fixing and detach the clutch cable P-clip from its bracket on the cooling fan cowl.



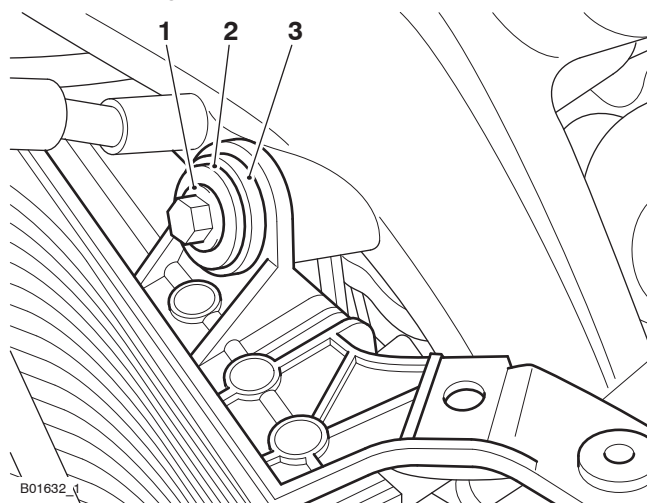
1. **Fixing**
2. **P-clip**
3. **Bracket**

4. Remove the fixing and the flanged sleeve securing the radiator to the lower bracket. Discard the fixing.



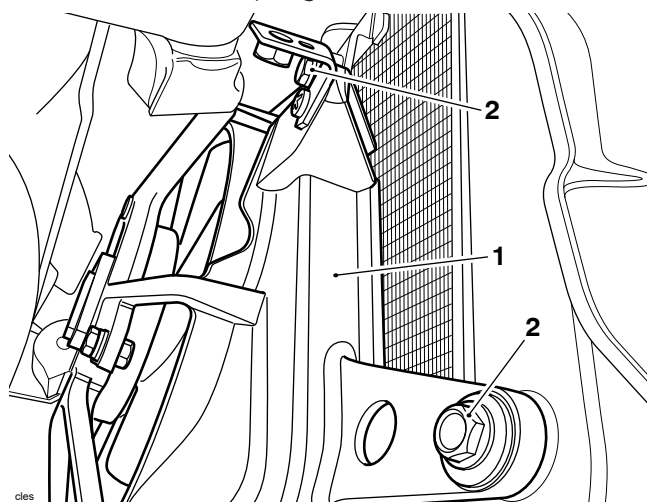
1. **Fixing**
2. **Flanged sleeve**
3. **Grommet**
4. **Bracket**

5. Remove the two fixings and the washers securing the radiator assembly to the frame. Discard the fixings. Note the position of the flanged sleeves for installation.



- 1. **Fixing (left hand side shown)**
- 2. **Washer**
- 3. **Grommet**

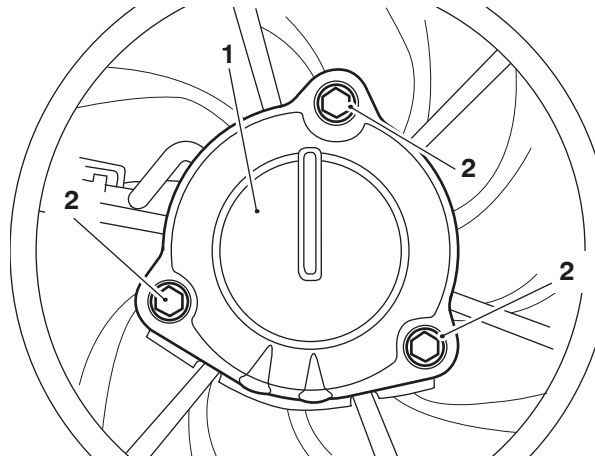
6. Lower the radiator sufficiently to allow access to the cooling fan assembly fixings.
7. Remove the four fixings, spring washers and washers securing the cooling fan assembly to the radiator. Note the order of removal of the spring washers and washers for installation.



- 1. **Cooling fan assembly**
- 2. **Fixings (right hand side shown)**

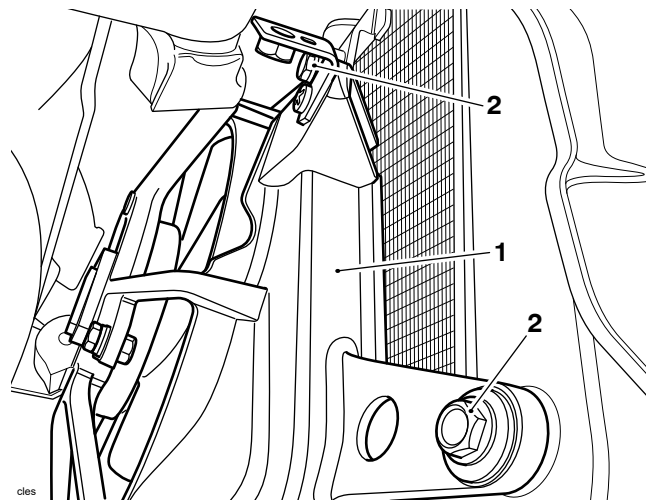
8. Lower the cooling fan assembly sufficiently to allow access to the radiator cowl fixings.
9. Remove and discard the three bolt assemblies securing the radiator cowl to the cooling fan assembly. Retain the nuts.

-
10. Install the heat shield to the radiator cowl with three new bolt assemblies from the kit and tighten to **8 Nm**, whilst holding the nuts.



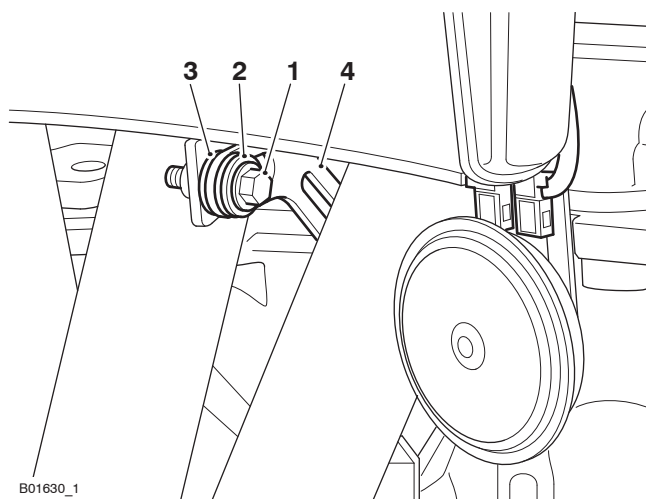
- 1. Heat shield
- 2. Bolt assemblies

11. Refit the cooling fan assembly to the radiator with the four original fixings, spring washers and washers, in the order noted during installation, and tighten to **8 Nm**.



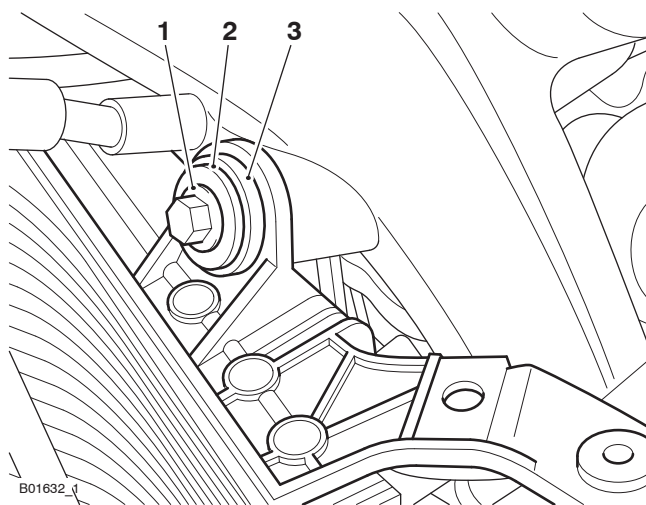
- 1. Cooling fan assembly
- 2. Fixings (right hand side shown)

12. Refit the radiator to the lower bracket with the flanged sleeve and new fixing. Tighten the fixing to **6 Nm**.



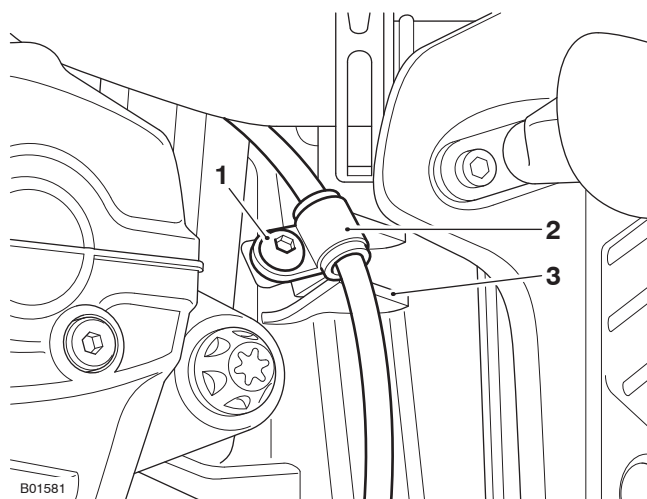
1. **Fixing**
2. **Flanged sleeve**
3. **Grommet**
4. **Bracket**

13. Make sure the flanged sleeves in the upper radiator mounts are in the correct position as noted during removal.
14. Refit the radiator to the frame with the original washers and two new fixings. Tighten the fixings to **6 Nm**.



1. **Fixing (left hand side shown)**
2. **Washer**
3. **Grommet**

15. Refit the P-clip to the bracket on the cooling fan cowl, securing the clutch cable. Tighten the fixing to **3 Nm**.



- 1. Fixing
- 2. P-clip
- 3. Bracket

- 16. Refit the front side panels as described in the Service Manual, using the two new fixings.
- 17. Reconnect the battery as described in the Service Manual.
- 18. Refit the seat as described in the Service Manual.
- 19. Check the coolant hoses for leaks. Rectify as necessary.
- 20. Provide a new Owners Handbook addendum page, as shown in Appendix A, with each repaired motorcycle to each customer.

Once a fuse has been refitted or the battery reconnected the rider's settings should be reset as noted.

! WARNING

If the battery has been disconnected or the fuses removed for any reason advise the rider to confirm the original mode settings have been correctly set.

Failure to reset the motorcycle to the rider's preferred rider mode settings and subsequently being ridden may cause loss of motorcycle control and an accident.

Appendix A

Cooling Fan Operation

This document contains revised information on the cooling fan operation. It must be kept with the Owner's Handbook.

CAUTION

The cooling fan operates automatically when the engine is running, and may continue to operate after the engine has been switched off.

Always keep hands and clothing away from the fan.

Contact with the rotating fan could result in minor or moderate injury.

The operation of the cooling fan has changed. The cooling fan may continue to operate for up to two minutes after the engine has been switched off.

Circulation

Initial and date when read and return to central file holder

Service Manager	Parts Manager	Sales Manager	Workshop Supervisor	Technician 1	Technician 2