



SAFETY RECALL

50 GALLON FUEL TANK PICK UP TUBE

RECALL NO: AASJ0

DATE: 12-7-2022

REFERENCE: QA-221207-N1

SUBJECT VEHICLES: Certain 2022 and 2023 model year Conventional trucks equipped with a 50 gallon fuel tank produced at the Mineral Wells, WV assembly plant between October 21, 2021 and October 12, 2022.

Note: *Refer to the appropriate Vehicle Identification Number in the warranty system to determine vehicle eligibility.*

OVERVIEW:

The fuel pickup tube installed into certain 50-gallon fuel tanks may bottom out, restricting the uptake of fuel to the engine. This procedure will provide the instruction to measure the fuel pickup tube and based on the result, either cut the tip or replace the pickup tube to ensure correct clearance with the bottom of the fuel tank.

NEW VEHICLES IN DEALERSHIP INVENTORY As required by Federal law (49 Code of Federal Regulations §577.13), dealerships are not to deliver any new vehicles in their inventory that are involved in a Safety Recall unless the vehicle has been remedied. Refer to the appropriate Vehicle Identification Number (VIN) list to determine vehicle eligibility.

BEFORE YOU BEGIN:

- Read and understand all instructions and procedures before you begin the work.
- Read and follow all **NOTICES** and **WARNINGS** set forth in this publication. These alerts help to avoid damage to components, serious personal injury, or both.
- Park the vehicle on a flat, level and solid surface.
- Turn off the engine and remove the key from the ignition switch.
- Always wear safety glasses or goggles to protect your eyes.
- Place wheel chocks in front of and behind all wheels to prevent the vehicle from moving.

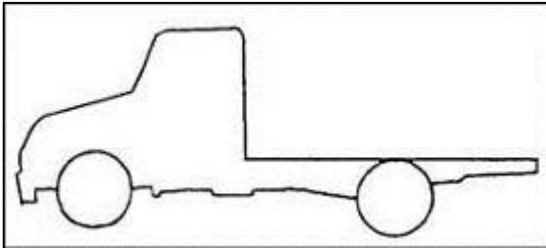


PARTS:

Part Number	Description	Quantity
SZ17712005	Hex Nut, W/Plastic Insert	2
7013076200	Fuel Pick Up Tube	1 (As Needed)
023015 (Harvey #)	Harvey TFE Paste (locally sourced)	

VEHICLE PREPARATION:

1. Park the vehicle on a level and solid surface. Confirm the engine is stopped, the starter switch is in the off (LOCK) position, and the key is removed.

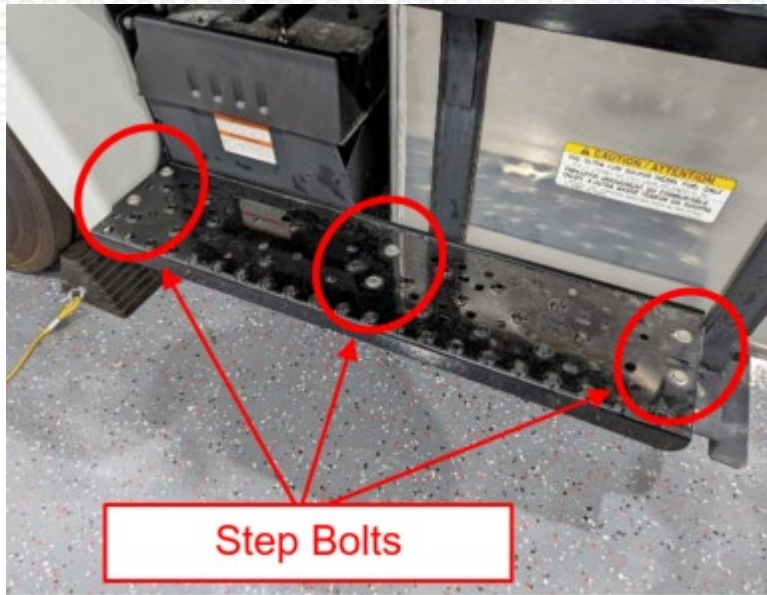


2. Apply the parking brake. Chock all of the wheels.

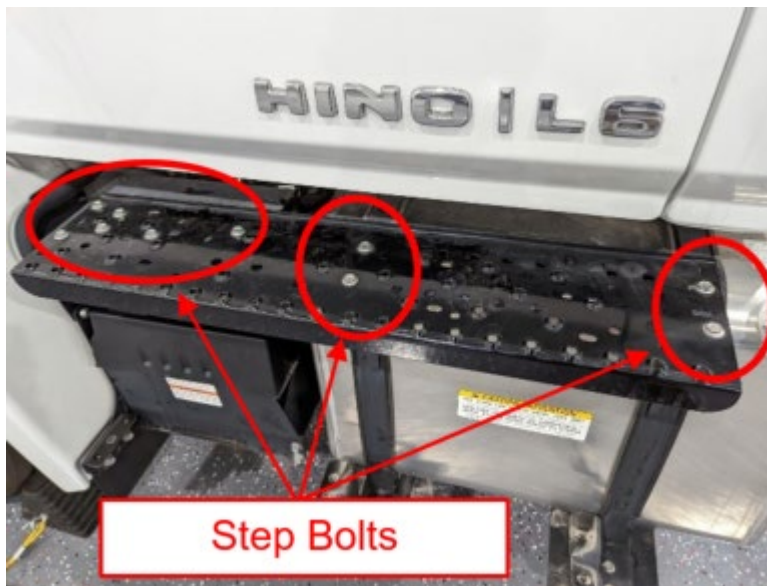


REPAIR PROCEDURE:

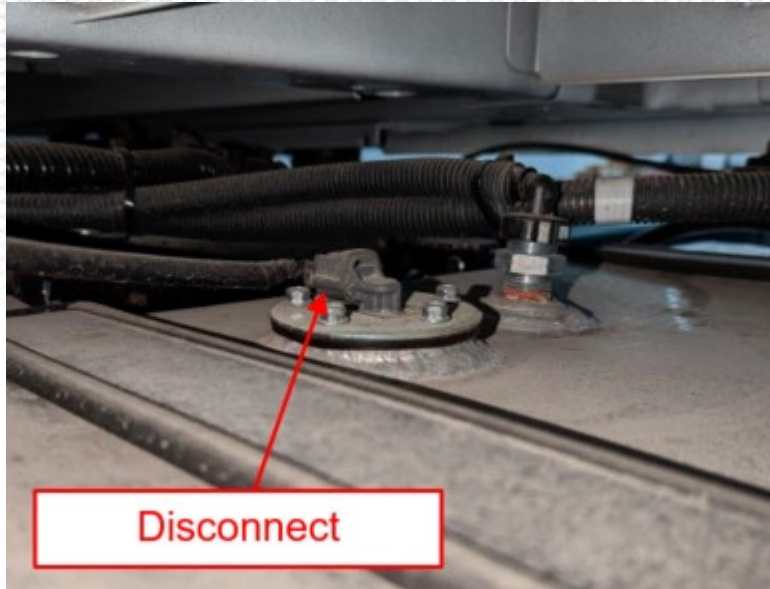
1. Remove the six bolts attaching the lower cab step and remove the step. Retain the 6 bolts and lower step for reassembly.



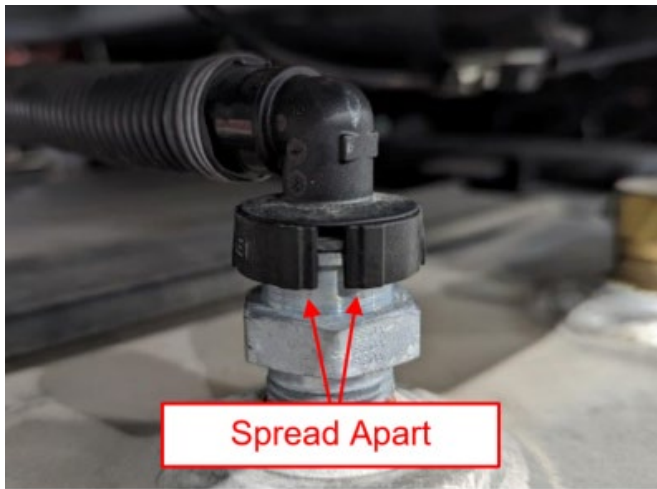
2. Remove the ten bolts attaching the upper cab step and remove the step. Retain the 10 bolts and upper step for reassembly.



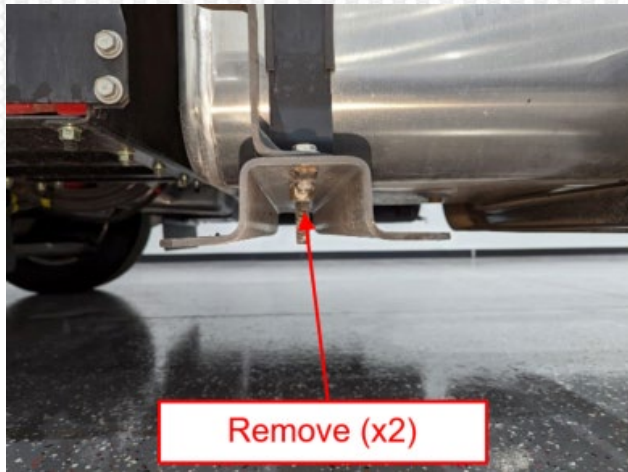
3. Disconnect the fuel level sending unit electrical connection.



4. Remove the locking ring from the fuel pick up tube at the rear of the fuel tank. Carefully spread the open end of the clip and slide it off the connection. Wrap a rag around the fuel line and lift the fuel line from the fitting.

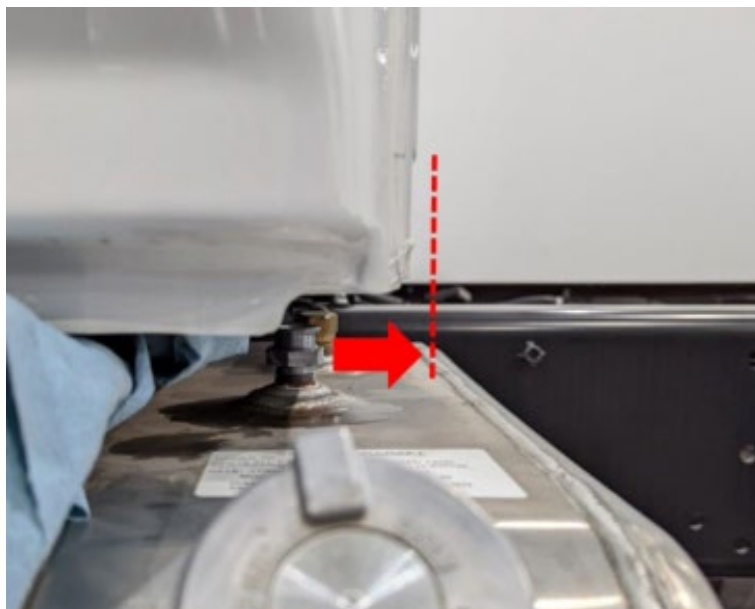


5. Remove the two nuts securing the fuel tank straps to the fuel tank mounting brackets. Discard these nuts, they will not be reused. Protect the underside of the cab with a cloth and lift the fuel tank straps upwards and away from the fuel tank.

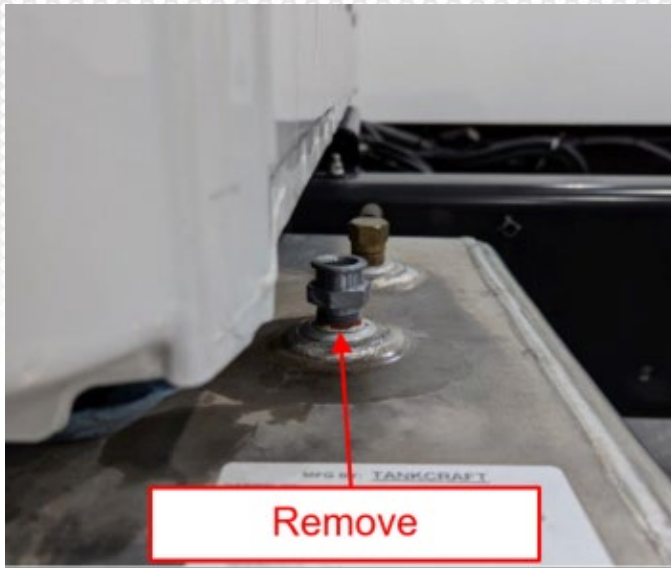


6. Slide the fuel tank rearward on the chassis until the fuel pick up tube on the rear of the tank clears the rear edge of the cab.

Notice: Care should be taken to prevent damaging the fuel tank or cab.

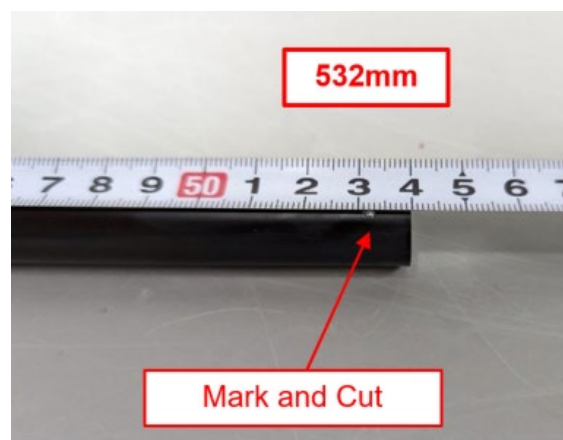


7. Remove the fuel pick up tube from the fuel tank.

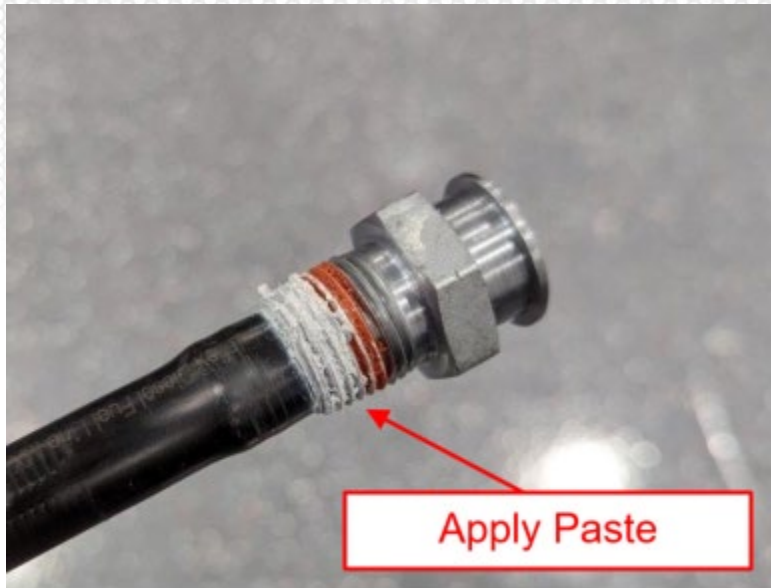


8. Measure the fuel pick up tube from the top of the fitting and mark the tube at 20-15/16 inches or 532mm. Cut the tube at this mark using a tubing cutter. If the tube is shorter than this measurement, replace the tube with a new 7013076200 fuel pick up tube. Mark and cut the new fuel pick up tube to the proper dimension.

NOTICE: Do not use wire cutters to cut the tube as damage to the tube will occur.

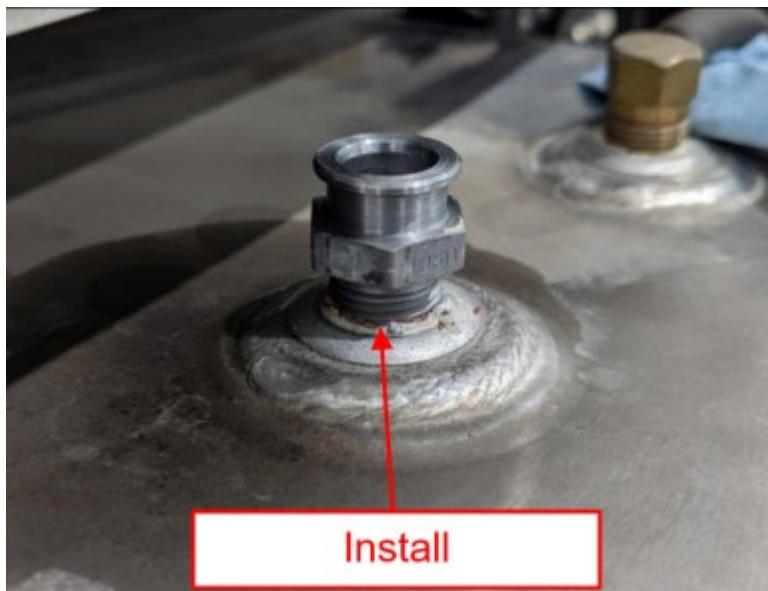


9. Apply a thin coating of TFE paste to the threads of the fuel pick up tube fitting. Use care as to not allow excess paste under the threaded portion as this can contaminate the fuel tank.



10. Install the fuel pick up tube in the fuel tank and tighten to the specified torque.

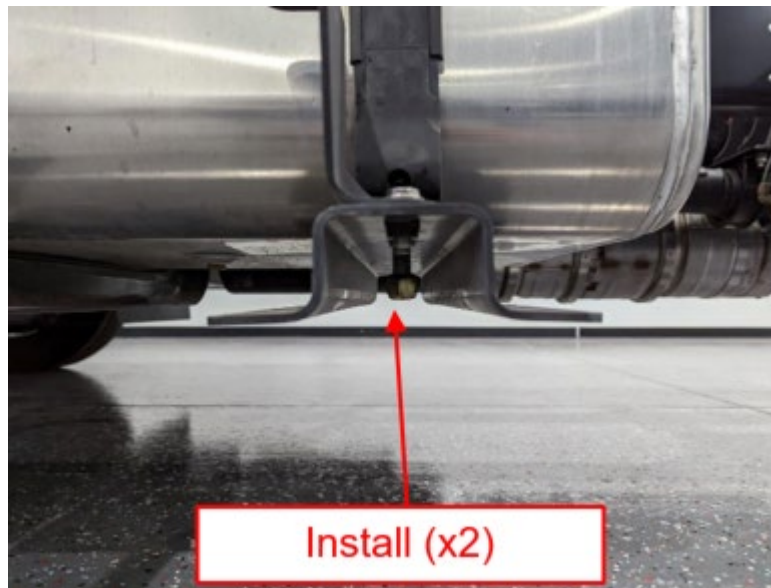
Specified Torque: 25 lb-ft (34 Nm)



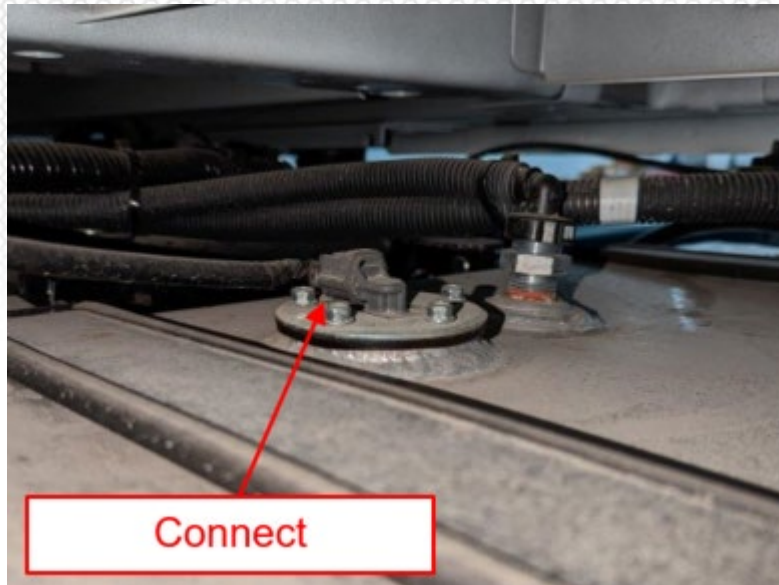
11. Return the fuel tank to its original location. Confirm the locating tabs on the inside of the tank are positioned around the rear tank bracket correctly.



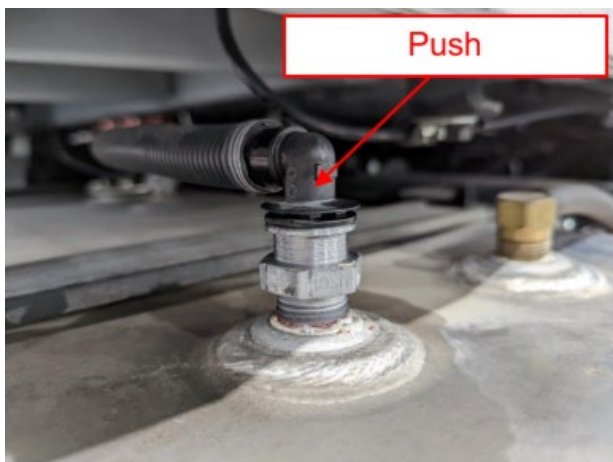
12. Reposition the two fuel tank straps and install a new SZ177-12005 nut on each strap. Do not tighten the nuts at this time.



13. Reconnect the fuel level sending unit electrical connection.

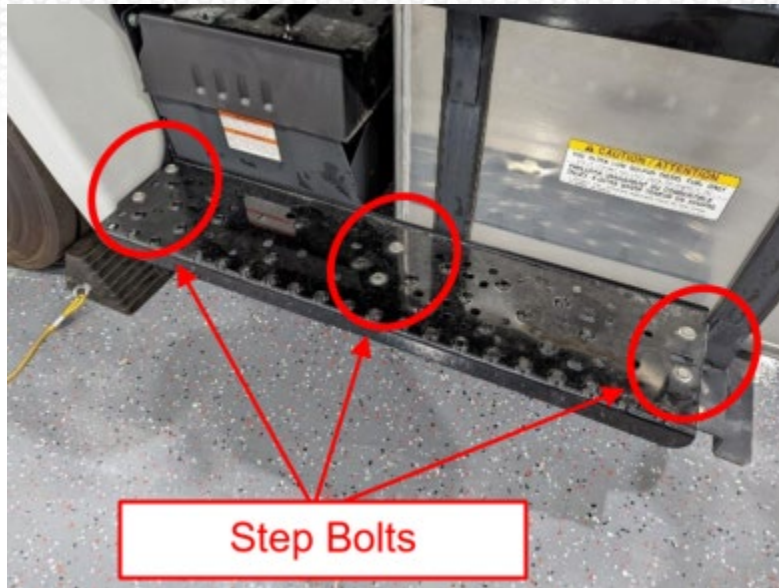


14. Reconnect the fuel pick up line by pushing the line back into the pick up tube on the fuel tank. Slide the locking ring removed in step 4 around the connection and ensure it is fully seated.



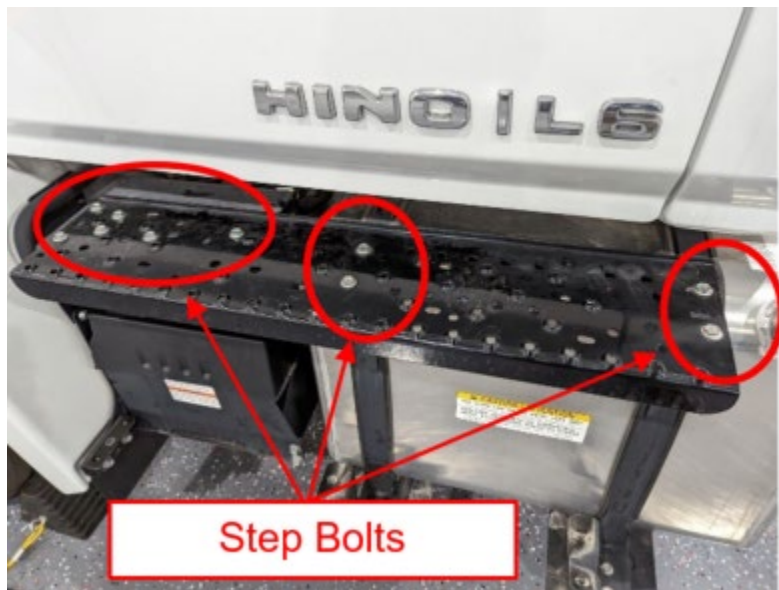
15. Reinstall the upper cab step and all ten fasteners removed in step 2. Tighten the fasteners to the specified torque.

Specified Torque: 32 lb-ft (43 Nm)



16. Reinstall the lower cab step and all six fasteners removed in step 1. Tighten the fasteners to the specified torque.

Specified Torque: 32 lb-ft (43 Nm)



17. Tighten the two fuel tank strap nuts to the specified torque.

Specified Torque: 19 lb-ft (26 Nm)



FINAL INSPECTION:

1. To complete this procedure, review the recall and confirm the following:

- The fuel pick up tube has been cut to the correct length.
- The fuel pick up tube has been properly resealed.
- All fasteners have been tightened to the specified torque.
- Any fuel spillage has been wiped from the outside of the fuel tank.

CLAIM APPLICATION

Reimbursable in accordance within the terms and policies of the Hino limited warranties.

Fuel Pick Up Tube Cut:

- a) Recall No:AASJ0
- b) Labor charge: 0.9 Hours
- c) Warranty code: 12119
- d) Trouble code: 98
- e) Operation code: 12150AOT
- f) Original failed part: 9999999999
- g) Sublet Allowance for Harvey TFE Paste: \$1.00

