 Tesla, Inc. Service Bulletin		<h2 style="margin: 0;">Inspect 2nd Row Seat Belt and Buckle Stacking</h2>	
SB-22-20-004 October 27, 2022			
Classification		Section/Group	Mobile Service
Recall Bulletin		20 - Safety and Restraint	Can Perform (where permitted)
Model Year	Model	Country/Region	Build Location
2017 - 2022	Model 3	All	Fremont, Giga Shanghai
<small>The model(s) and model year(s) listed are a general approximation of the affected VIN list. Refer to the VIN/Bulletin Tracker or Customer/Vehicle profile to determine applicability of this bulletin for a particular vehicle.</small>			

Recall Bulletin: Recall Bulletins are mandatory service procedures that, unless they can be completed via a firmware update that a customer installs through the normal course of ownership, must be carried out by Tesla-certified Service Centers. Recall work performed by uncertified technicians could lead to unsafe conditions or voided warranty provisions.

Condition

Some Model 3 vehicles may require the second-row center seat belt anchor and LH seat buckle bracket to be reassembled to Tesla specifications.

Correction

Inspect the vehicle for symptoms related to the condition. If symptoms are present, correct the stacking of the center seat belt anchor and LH seat buckle bracket.

Correction Description	Correction	Time
Inspect 2 nd Row Seat Belt And Buckle Stacking; No Correction Required	S012220004	0.1
Inspect And Correct 2 nd Row Seat Belt And Buckle Stacking	S022220004	0.1

Part Number	Description	Quantity
Part If Necessary 1117252-00-A	BOLT, HF, M12X40, STL[109], ZN, ADH, MAT	1

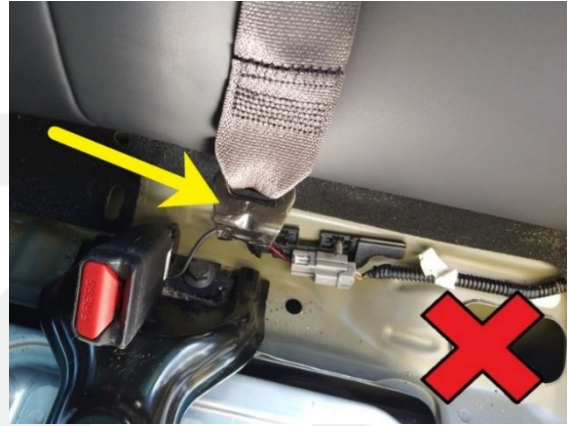
This part number was current at the time of publication. Use the revisions listed or later, unless otherwise specified in the [Parts Catalog](#).

Inspect Seat Belt and Buckle Stacking

1. Remove the 2nd row lower seat cushion (refer to Service Manual procedure [13051002](#)).
2. Verify that the 2nd row center seat belt anchor is not free floating (Figure 1), or “hooked” onto the 2nd row LH seat buckle harness (Figure 2).
 - If either of these conditions exist, go to the “Correct Seat Belt and Buckle Stacking” section of this document.
 - If none of these conditions exist, go to the next step.



❌ Figure 1 — Anchor free floating



❌ Figure 2 — Anchor hooked onto harness

3. Inspect the stacking of the 2nd row center seat belt and the 2nd row LH seat buckle:
 - a. Verify that the 2nd row center seat belt is without twists, and lays flat against the 2nd row seat back with the tongue pointing forward (Figure 3).



✅ Figure 3 — Seat belt untwisted, lays flat, and tongue points forward

- b. Verify the 2nd row center seat belt anchor has the belt to the RH side and is on top of the 2nd row LH inner penthouse rail (Figure 4).



✓ **Figure 4 — Anchor has belt to RH side**

- c. Verify the 2nd row LH seat buckle bracket is on top of the 2nd row center seat belt anchor, and the guide pin of the bracket is aligned in the slot of the anchor (Figure 5)



✓ **Figure 5 — Guide pin aligned with slot**

- d. Verify the guide pin of the 2nd row LH seat buckle bracket enters the hole in the 2nd row LH inner penthouse rail (Figure 6).



✓ **Figure 6 — Guide pin in hole of penthouse rail**

- e. If:
- Any one of these conditions does not exist, go to the “Correct Seat Belt and Buckle Stacking” section of this document.
 - All of these conditions exist, go to the next step.


4. Tighten the bolt that attaches the seat buckle bracket, the seat belt anchor, and the inner penthouse rail to the body (torque 40 Nm) (Figure 7).



Figure 7

5. Install the 2nd row lower seat cushion (refer to Service Manual procedure [13051002](#)).
6. Discontinue this bulletin and use correction code S012220004.

Correct Seat Belt and Buckle Stacking

 **NOTE:** Review [this video](#) to see the proper stacking of the seat belt anchor and the seat buckle bracket.

1. Remove and discard the bolt that attaches the 2nd row LH seat buckle to the body, and separate the buckle bracket from the 2nd row center seat belt anchor from the 2nd row LH inner penthouse rail (Figure 8).



Figure 8

- Set the 2nd row center seat belt anchor onto the 2nd row LH inner penthouse rail, with the belt to the RH side (Figure 9).

NOTE: Make sure that the belt is not twisted, and lays flat against the 2nd row seat back with the tongue pointing forward (Figure 10).

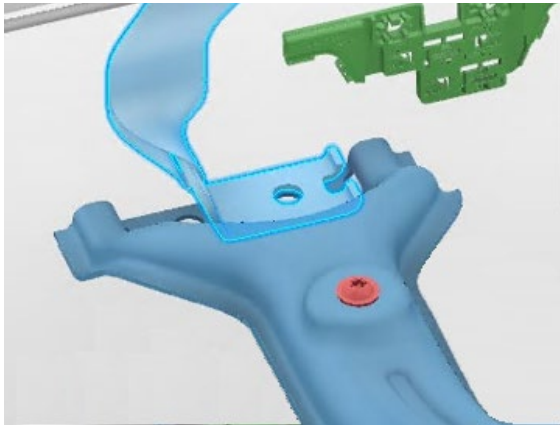


Figure 9 — Belt is to the RH side

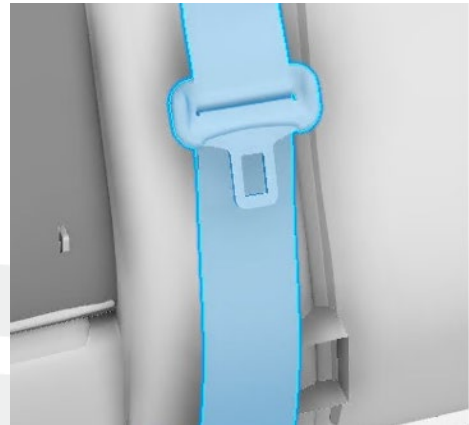


Figure 10 — Belt lays flat against seatback

- Set the guide pin of the 2nd row LH seat buckle bracket into the hole of the 2nd row LH inner penthouse rail, and pivot the bracket down onto the anchor, aligning the guide pin to the slot in the anchor (Figure 11).

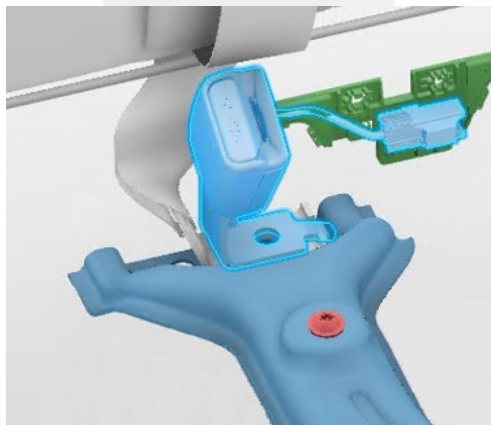


Figure 11

- Install a new bolt to attach the seat buckle bracket, the seat belt anchor, and the inner penthouse rail to the body (torque 40 Nm) (Figure 12).

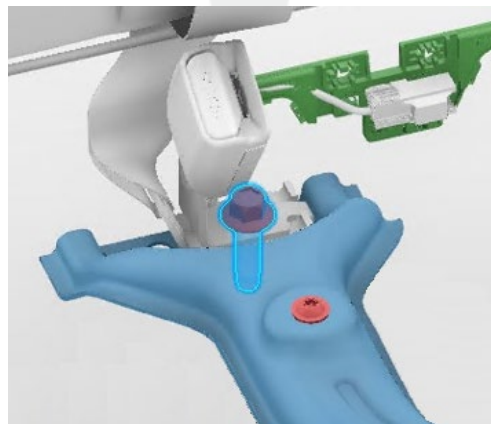


Figure 12

- Install the 2nd row lower seat cushion (refer to Service Manual procedure [13051002](#)).
- Use correction code S022220004.