



## INSTRUCTIONS TO PERFORM RECALL CAMPAIGN 170

### Models Affected:

Certain Model Year Winnebago 2020-2023 View and Navion (500-Series) Motorhomes. These motorhomes were manufactured from March 1, 2019, through October 13, 2022.

### Tools Required:

- Tool to cut cable tie
- Screw gun with w/#2 Phillips Magnet Tip.
- Jack and jack Stands certified to support the weight of the vehicle.

### Parts Required:

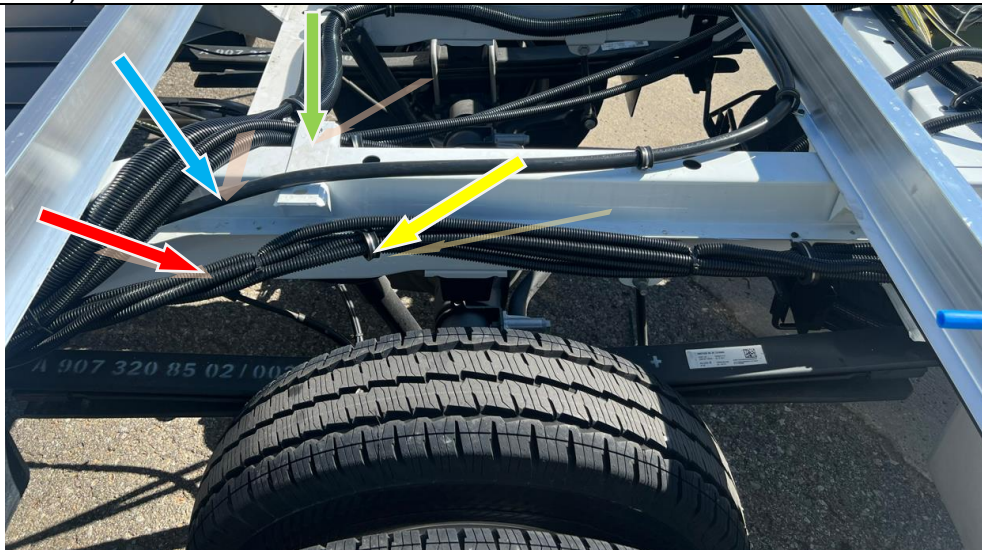
#### Part Kit #RC7904-23-770

- (2) Standard cable ties (Use as required)
- (1) Button head Cable tie



### Procedure:

1. Record and Verify the Serial Number of the coach is affected by recall 170.
2. Raise the rear of the coach 4" with the on-board leveling system or hydraulic jack to increase the clearance between the driver's side wheel lip and rear tire.
3. Place jack stands under frame rails before performing work under coach.
4. Locate the Mercedes body mount (Green arrow), L.P. line (Blue arrow), other system lines (Red arrow), and system lines clamp next to the body mount (Yellow arrow) and inspect all system lines for damage. Note: The 524V has an additional 1" diameter macerator line in this area. See step 10 for the completed 524V routing.
5. If damage is noticed, contact Technical Assistance at 1-866-653-4329 to order replacement parts.
6. Remove the clamp, or clamps holding the system lines that are within 6" of the body mount (Yellow arrow) on the outside of the frame rail.



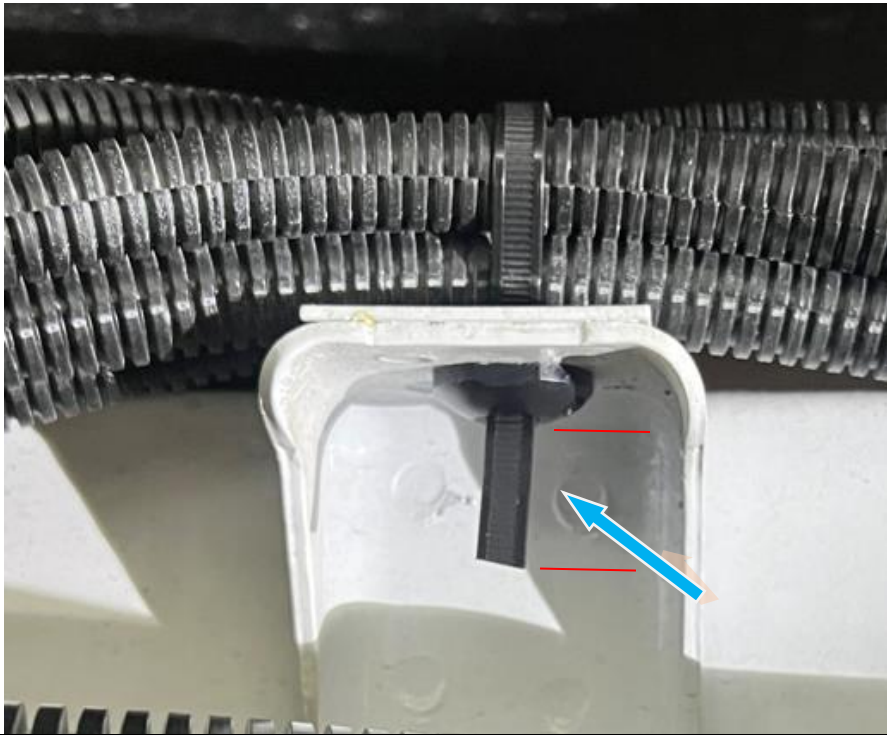
7. With the clamp removed, lift the system lines over the body mount, removing all excess slack in the L.P. line and system lines (Shown with the green arrow). Note: Do not route the 524V macerator line over the body mount. See step 10 for the 524V macerator line routing.
8. Group the L.P. line and system lines together over the body mount hole
9. Insert the button head tie, from the bottom of the mount, up through the hole, around the L.P. line and system lines, and back through the same hole as shown below (Red arrow location).



10. On the 524V, reuse the clamp previously removed to reattach the macerator line (Shown with the blue arrow). Note: The best practice is to keep the macerator line horizontal in this area to prevent excess trapping.



11. Trim off the excess tie leaving a 1" long tail. Make sure the button head tie is installed as shown and that it is properly wrapped around the L.P. line and system lines as shown.



12. With coach still lifted, make sure all systems are routed and strapped up properly. Tie up all loose systems as needed with standard cable ties from kit.
13. Remove jack stands
14. Lower vehicle.
15. Work is completed.

If you have any questions regarding this recall remedy, please contact Winnebago Technical Assistance at 1-866-653-4329.