



INSTRUCTIONS TO PERFORM RECALL CAMPAIGN 168

Models Affected:

2020 – 2023 Model Year; Travato 259G/GL

Read the entire instructions carefully before starting the procedure. If you have any questions, please contact Winnebago Industries' Technical Service Department by calling 1-866-653-4329 or by email: techservice@wgo.net. This document is confidential and is intended for dealer use only.

Tools Required:

- Pencil
- Screwdriver/Screwgun
- Wire Stripper Cutter/Crimper
- Fish Tape Wire Puller
- Oscillating Saw

Dealer #7900 Part Kit-RC7900-23-768

Kit contains extra pieces that may not be needed



Procedure:

Travato 259G/GL

1. Locate awning switch panel on the forward end of galley cabinet. Remove the 4 screws to gain access to switch connectors.



2. Remove the switches from the panel and label connectors accordingly for reinstallation of the switches. **NOTE: Awning in/out switch will not be used.**
3. Cut wires from the connector for the awning IN/OUT switch and add (3) blue spade terminals to the 14-gauge wires. If heavier gauge wire is noticed use yellow connector from kit.



4. Locate the correct switch plate for the Travato model. (Extra plate in kit will be thrown away)
Install coach battery switch and line up new plate in opening. Mark openings for switches.



5. Remove switch panel and cut opening slightly larger than marked using an oscillating saw.



6. Remove drawers under sink for access to wiring.



7. Locate carefree blue tooth module behind panel above the sliding door. Module location is towards the rear of the panel. Remove caps and fasteners to gain access.

Note: Model year 2020-early 2021 blue tooth module is located behind awning switch panel. Refer to sheet 11-13 for additional information.

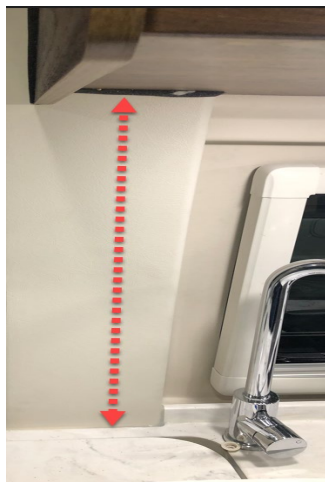


8. Pull blue tooth module out and expose wires



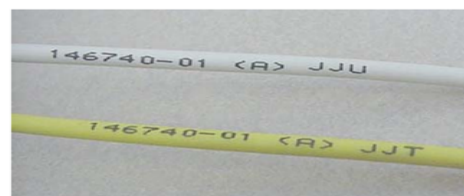
9. Install the 2- wire loom from kit. Fish wire from the module location, behind plastic panel to the base of the galley cabinet. Note: one wire will be spliced into chassis battery power (TD) under galley cabinet.

(Example of identifying wiring shown below)

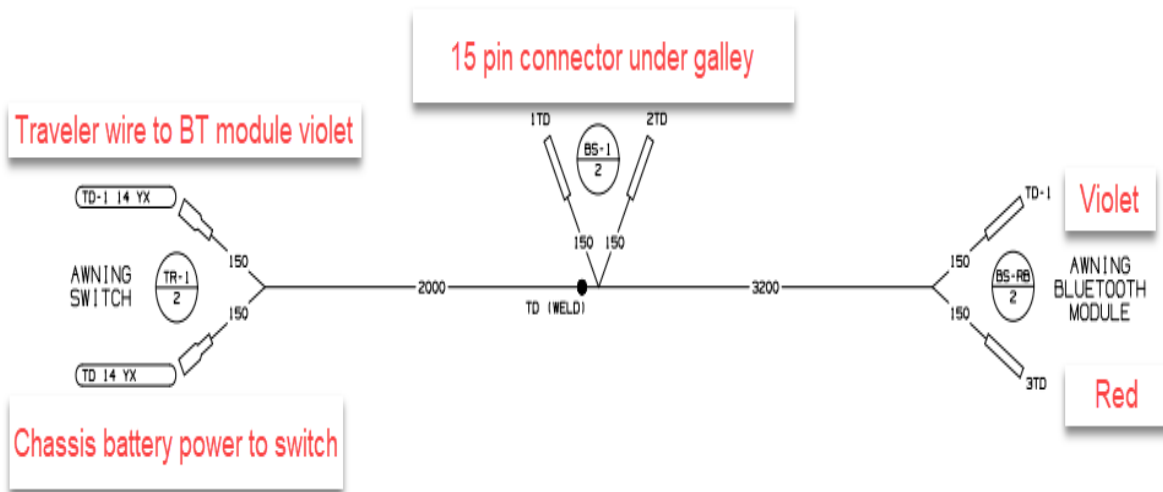


This photo shows a yellow and a white wire. Note the eight-digit part number (146740-01) the revision level (A) and the three-character alpha designation (JJU) on the yellow wire.

The eight-digit part number and the revision level specify the wiring assembly to which the JJT wire belongs and the alpha characters are used to identify the purpose or function of the wire.



- Remove panel and find 15-pin connector on main harness. Locate (TD) in connector. Cut wire and connect (Y) splice ends to harness. Route wire from new harness to the plug.



- Remove (NM) wire from violet and Red on module. Connect new harness wires (TD and TD-1) to blue tooth module. TD to Red wire, and TD-1 to violet wire. See wiring diagram below:

NOTE: Cap off NM and NM-1 wire at module using butt connector from kit.

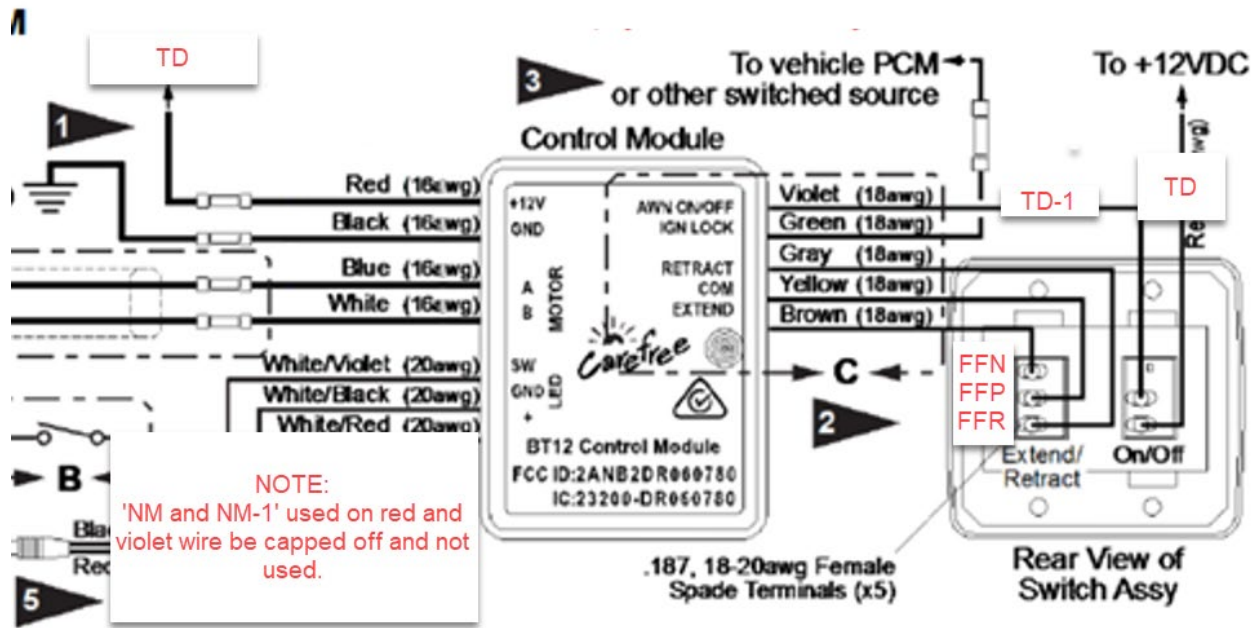


Figure 2: BT12 and switch circuit

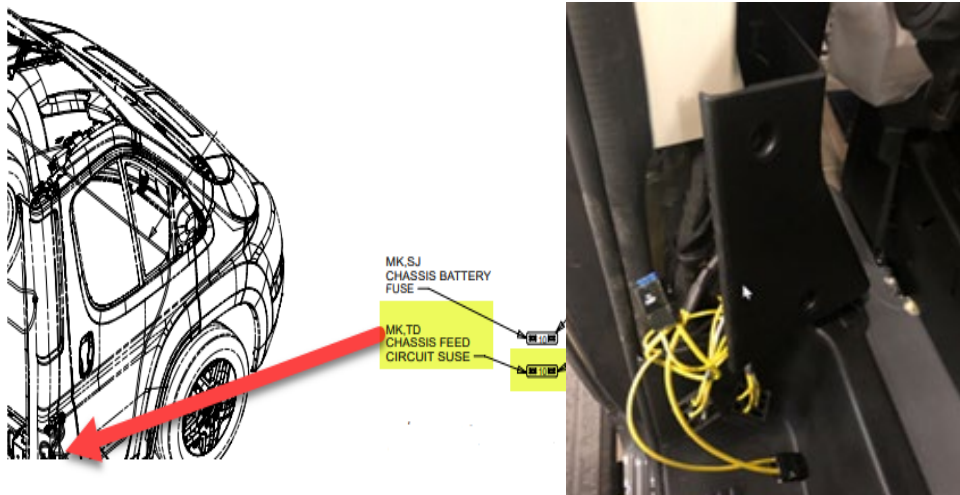
- Install Carefree switch and remaining two switches in plate. Wire Carefree switches per above diagram. Install switch plate to cabinet.



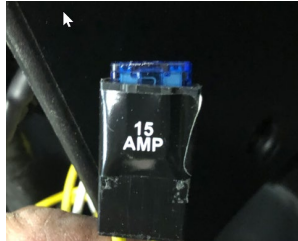
13. Locate 12v fuse panel. Remove 15-amp fuse and white out awning identification on plate for #6. Remove 'NM' wire from fuse box and tape it back to the harness

1	LIGHTS	10	HEATER
	15 A FUSE MAX		10 A FUSE MAX
2	12V RCP	11	TANK HEATER
	15 A FUSE MAX		30 A FUSE MAX
3	USB CHARGER	12	
	15 A FUSE MAX		__ A FUSE MAX
4	MONITOR PANEL	13	
	15 A FUSE MAX		__ A FUSE MAX
5	VENT	14	
	15 A FUSE MAX		__ A FUSE MAX
6	White out label	15	
	15 A FUSE MAX		__ A FUSE MAX
7	LP DETECTOR	16	
	5 A FUSE MAX		__ A FUSE MAX
8	WATER PUMP	17	
	15 A FUSE MAX		__ A FUSE MAX
9	REFRIG	18	
	15 A FUSE MAX		__ A FUSE MAX

14. Locate 10-amp (MK/TD) fuse holder in B-post pass side next to passenger seat.



15. Locate (MK/TD) wires and remove 10amp fuse. Replace with a 15-amp and install new label.



16. Update Carefree firmware to blue tooth module. Version 3.1.30 or 3.1.4 is the most current. See attached sheet for procedure.
17. Testing system after repairs: 1. While extending awning, turn awning 'OFF' at Carefree switch, awning should stop. 2. Start engine, try to extend, awning should not extend with engine running. Call Tech Service if either of these tests fail. (866-653-4329)
18. Reassemble components
19. Complete warranty reimbursement claim and file.



SERVICE BULLETIN 2022-10-17

OCTOBER, 2022

IJ STYLE ROOF MOUNTED AUTOMATIC AWNING FIRMWARE UPDATE

Service

This update applies to 2019 and newer owners of Winnebago Revel, Travato, Boldt, Era, Navion and View motorhomes. Carefree and Winnebago recommend performing a firmware update for the Main Awning Control Module to eliminate bugs and enhance the user experience.

The update can be performed by a qualified dealer.

- A. Make sure your app is up to date.
 1. Open App Store or Play Store.
 2. Search for Carefree Connects (BT12).
 - a. If the button says GET or INSTALL then touch it to download the app and then touch OPEN.
 - b. If the button says UPDATE then do that first and then OPEN the app.
 - c. If it says OPEN then open the app.
- B. Connect to the awning.

Dealer Update

1. Open the latest app.
2. Touch the gear wheel in the upper right corner of the screen.
3. Touch the 3D box in the upper right corner of the screen.
4. Put in code 2718 and touch OK.
5. Touch the back arrow in the upper left corner.
6. Touch the 9 boxes in the upper left corner.
7. In most cases, only one item will be showing. It will likely be labeled "Carefree". If there are more than one showing, the numbers to the name indicate signal strength (proximity to each module; lower numbers mean closer to you). Touch the button for the awning that is closest to you.
8. The app will connect to the awning and take you back to the home screen.
9. Within 30 seconds of connecting, the app should tell you that the firmware either needs to be updated or that it is already up to date.
10. If it says that there is a newer version available, then touch the OK button and let your phone update the firmware.
11. Once complete, close the app completely and then reopen the app and connect to the awning again.
12. Touch the gear wheel icon in the upper right corner of the screen. Swipe your screen left two times to get to the About screen. FW Version will say 3.1.3 or 3.1.4 if the update was successful.
13. Go to the home screen of the app, press and hold the icon for that awning until the popup at the bottom of the screen gives the option to "Remove from My Awnings".
14. Touch the button, close the app, and you are now ready for the next one.

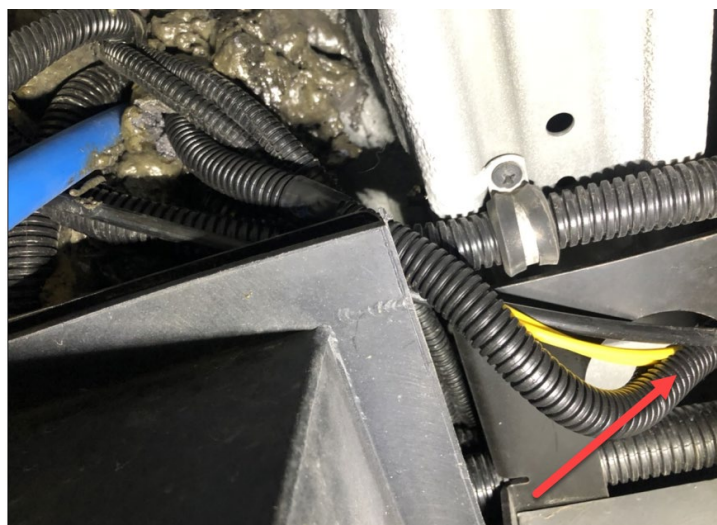
Travato 259G/GL

“...2020 revision -02 & 2021 revision -11...”

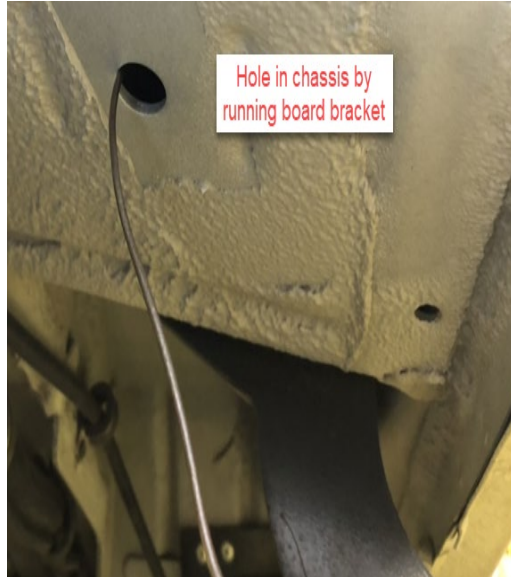
1. Locate BT module behind switch plate
2. From the parts kit, locate single strand wire in convoluted tubing approx. length 14' long.
3. Under galley find wire hole going though chassis next to relays.



4. Fish single strand wire through hole and locate wire run inboard of freshwater tank. Fish wire forward to access hole in frame. Secure wire as needed and seal holes with silicone.



5. Locate hole in frame by running board bracket. Open pass door and loosen plastic step well for access.



6. Route wire from bracket through the pass through to step well up to fuse holder and join wire coming out of fuse holder marked TD.



7. Hook the other end per diagram below.

