



# VOLUNTARY RECALL CAMPAIGN

Classification: RS22-011	Reference: NTB22-078	Date: September 7, 2022
-----------------------------	-------------------------	----------------------------

## VOLUNTARY SAFETY RECALL CAMPAIGN 2021-2022 ROGUE; REAR OUTBOARD SEAT BELT INSPECTION

**CAMPAIGN ID #:** PC915  
**APPLIED VEHICLES:** 2021-2022 Rogue (T33)

**Check Service COMM or Dealer Business Systems (DBS)  
National Service History to confirm campaign eligibility.**

### INTRODUCTION

Nissan is conducting this voluntary safety recall campaign on certain specific model year 2021-2022 Rogue vehicles to inspect and, if necessary, replace the rear outboard seat belts. This service will be performed at no charge to the customer for parts or labor.

### IDENTIFICATION NUMBER

Nissan has assigned identification number PC915 to this campaign. This number must appear on all communication and documentation of any nature dealing with this campaign.

### DEALER RESPONSIBILITY

It is the dealer's responsibility to check Service COMM or Dealer Business Systems (DBS) National Service History for the campaign status on each vehicle falling within the range of this voluntary safety recall which for any reason enters the service department. This includes vehicles purchased from private parties or presented by transient (tourist) owners and vehicles in a dealer's inventory. **Federal law requires that new vehicles in dealer inventory which are the subject of a safety recall must be corrected prior to sale. Failure to do so can result in civil penalties by the National Highway Traffic Safety Administration.** While federal law applies only to new vehicles, Nissan strongly encourages dealers to correct any used vehicles in their inventory before they are retailed.

Bulletins are intended for use by qualified technicians, not 'do-it-yourselfers'. Qualified technicians are properly trained individuals who have the equipment, tools, safety instruction, and know-how to do a job properly and safely. **NOTE:** If you believe that a described condition may apply to a particular vehicle, DO NOT assume that it does. See your Nissan dealer to determine if this applies to your vehicle.

## SERVICE PROCEDURE

### **⚠ WARNING**

To avoid the risk of death or severe personal injury, follow all cautions, warnings and notes when working on or near a Supplemental Restraint System (SRS), such as an air bag.

### **NOTICE**

To avoid damage to the vehicle, handle interior trim carefully. Work with clean hands and clean tools to avoid dirt and stains. Use protective covers as needed.

1. If the vehicle is equipped with a partition behind the front seats (Figure 1), skip to step 14 on page 7 to remove the partition. If the vehicle is NOT equipped with a partition, continue to step 2 on page 3



Figure 1

2. Remove the rear seat bottom cushion.
  - Refer to step 1 of the ESM: **BODY INTERIOR > SEAT > REMOVAL AND INSTALLATION > REAR SEAT > Removal and Installation**

3. Position the Driver (LH) side rear outboard seat belt so that the seat belt label is viewable (Figure 2).



Figure 2

4. Locate the lot number on the Driver (LH) side rear outboard seat belt label and document it on the repair order (Figure 3).

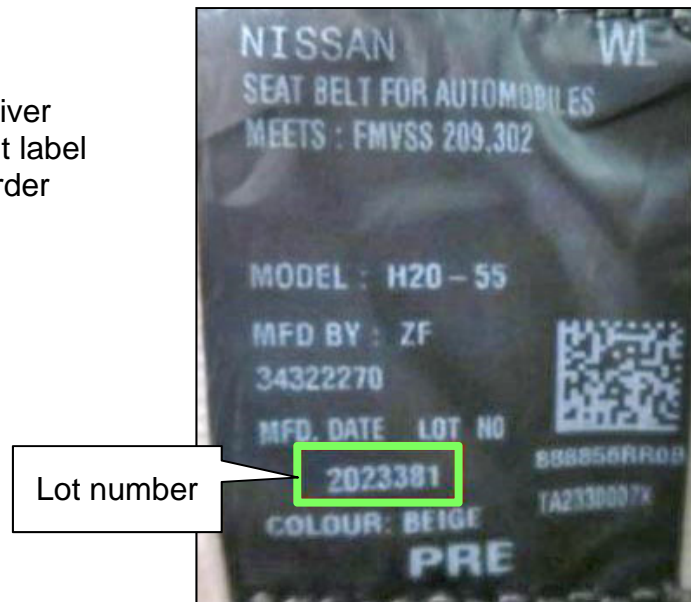


Figure 3

5. Repeat steps 3 - 4 for the Passenger (RH) side rear outboard seat belt.

6. Open ASIST.

7. Select **Tech Support Info**, and then select **Bulletin Support Items**.

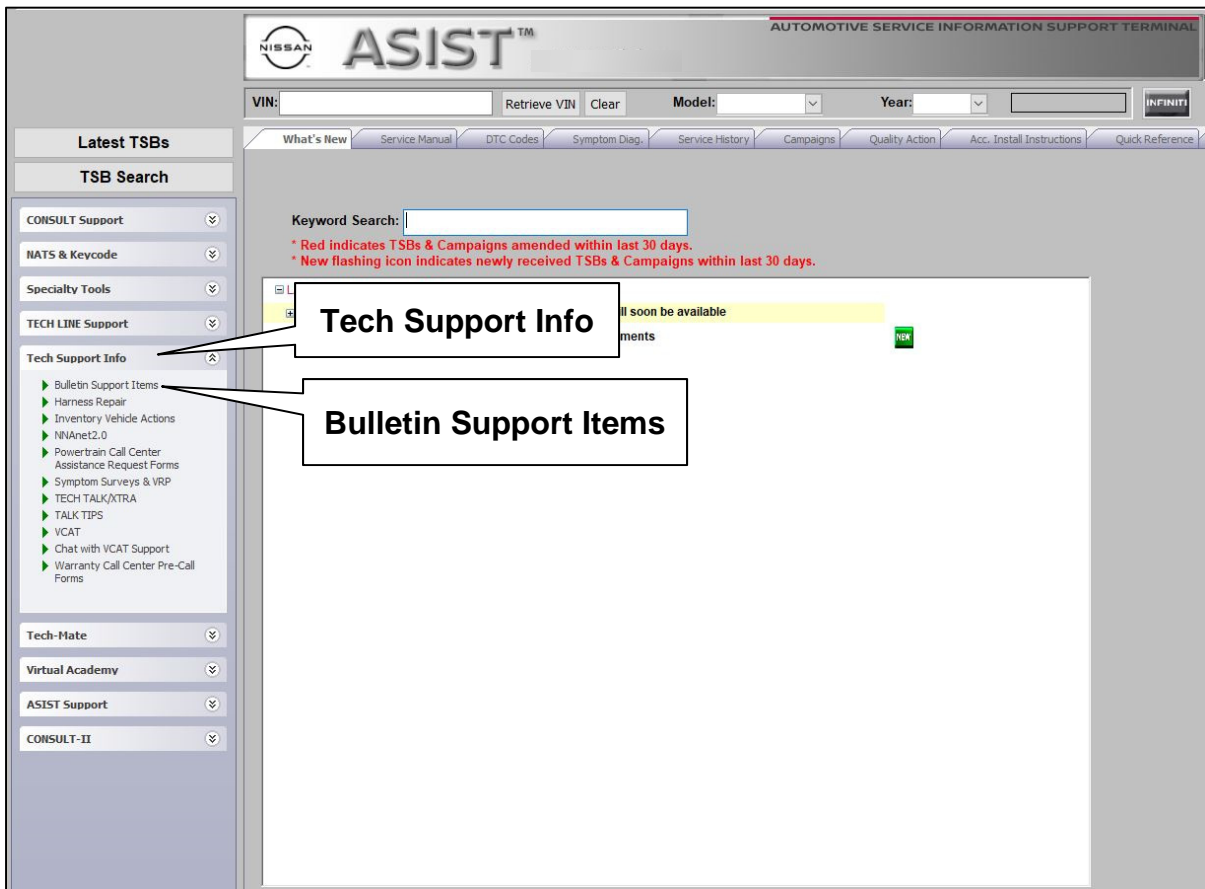


Figure 4

- 8. Select **PC915 Rogue Rear Seatbelt Assembly**.

**NNA - Nissan Bulletin Support Items**

**Bulletin Support Items (Nissan) - Service Actions**

R1814 Voluntary Safety Recall Campaign - 2009 Murano (Z51) Brake Fluid Flush Check Sheet [CLICK HERE...](#)

P0A08 Voluntary Service Campaign - 2010-2014 Murano (Z51) 2011-2015 Quest (E52) Brake Fluid Flush Check Sheet [CLICK HERE...](#)

Voluntary Safety Recall Campaign - MY17/18 Frontier, Versa SD/Note, Micra & MY17 NV1500-3500, NV200 + Taxi, Sentra Mechanical Key Ignition System [CLICK HERE...](#)

PC649 - ABS Actuator Inspection [CLICK HERE...](#)

Voluntary Safety Recall Campaign – MY2019 Altima; Brake pedal inspection [CLICK HERE...](#)

PC687 Rogue Rear Brake Caliper [CLICK HERE...](#)

PC716 - 2018 Altima/Rogue Cylinder Head Serial Number Inspection [CLICK HERE...](#)

PC804 Rogue Rear Brake Caliper [CLICK HERE...](#)

R21A4 Murano Rear Knuckle Inspection [CLICK HERE...](#)

PC845, PC846, PC847 2022 Pathfinder 2nd Row Seat Part Number Look up [CLICK HERE...](#)

**PC915 - Rogue Rear Seatbelt Assembly [CLICK HERE...](#)**

Figure 5

- 9. Enter the **Dealer Code** and **VIN**.
- 10. Enter the seat belt lot numbers documented in steps 4-5 on page 3.

**PC915 - Rogue Rear Seatbelt Assembly**

8/17/2022 4:02:59 PM (Mountain Standard Time)

**Please enter/scan the VIN and Lot Number**

<b>Dealer Code:</b>	<input type="text" value="XXXXXXX"/>
<b>VIN :(17 digits)</b>	<input type="text" value="XXXXXXXXXXXXXXXXXX"/>
<b>RH Rear Seatbelt Assembly Lot Number:(7 Digits)</b>	<input type="text" value="XXXXXXX"/>
<b>LH Rear Seatbelt Assembly Lot Number:(7 Digits)</b>	<input type="text" value="XXXXXXX"/>

Figure 6

11. Select **Check** (Figure 6 on page 5).

- If the result states both rear seat belts are OK, skip to step 13.
- If the result states one or both rear outboard seat belts are NG, select print and attach to the repair order, and continue to step 12 and replace only the required seat belt(s).

**⚠ WARNING**

To avoid the risk of death or severe personal injury, follow all cautions, warnings and notes when working on or near a Supplemental Restraint System (SRS), such as an air bag.

**NOTICE**

To avoid damage to the vehicle, handle interior trim carefully. Work with clean hands and clean tools to avoid dirt and stains. Use protective covers as needed.

12. Replace the applicable rear outboard seat belt(s) as determined in step 11.

- Refer to the ESM: **RESTRAINTS > SEAT BELT > REMOVAL AND INSTALLATION > REAR SEAT BELT > SEAT BELT RETRACTOR > Removal and Installation**
- When ordering parts, select the part number that corresponds to the correct vehicle interior color listed in the ASIST tool.

13. Reinstall the rear seat bottom cushion.

- Refer to the ESM: **BODY INTERIOR > SEAT > REMOVAL AND INSTALLATION > REAR SEAT > Removal and Installation**
- If the vehicle is equipped with a partition, skip to step 22 on page 9 to reinstall the partition.
- If the vehicle is NOT equipped with a partition, proceed to **CLAIMS INFORMATION** on the last page.



## Partition Removal (if equipped)

14. Open both rear doors and the back door.



Figure 7

15. If present, remove the cardboard box labeled "STOWED ITEMS" (Figure 8).

**IMPORTANT:** Do not open the cardboard box, it has a tamper proof seal.

- Secure the cardboard box in a safe place, it will be placed back in the vehicle.



Figure 8

16. Remove the support arm to partition mount bolts/washers and nuts from both sides (Figure 9 and Figure 10).

- The bolt and nut size is standard 1/2 inch.
- The nut on the backside will need to be held with a wrench while the bolt is removed.

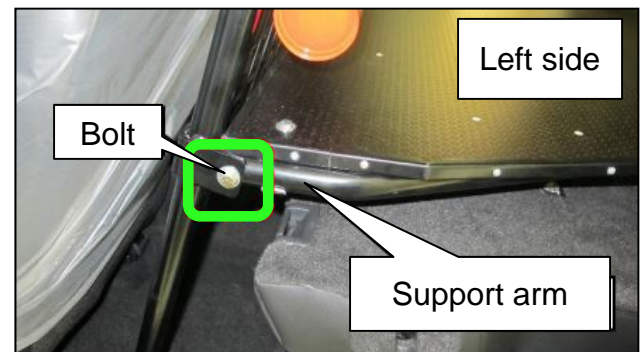


Figure 9

- Place the bolts/washers and nuts in a secure place; they will be reused later.

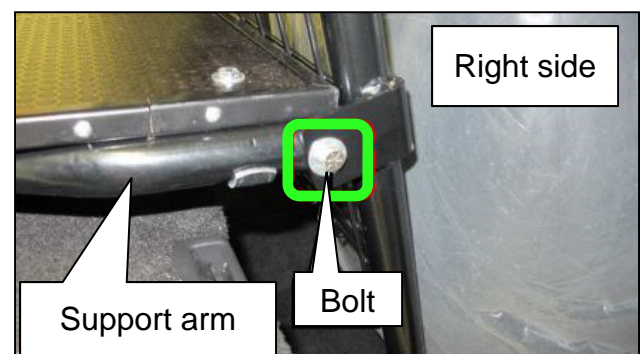


Figure 10

17. Move to the rear of the vehicle and remove the luggage board.
- Lift the rear of the luggage board up, and pull out toward the rear of the vehicle to remove it.
  - Place the luggage board in a clean and secure area.

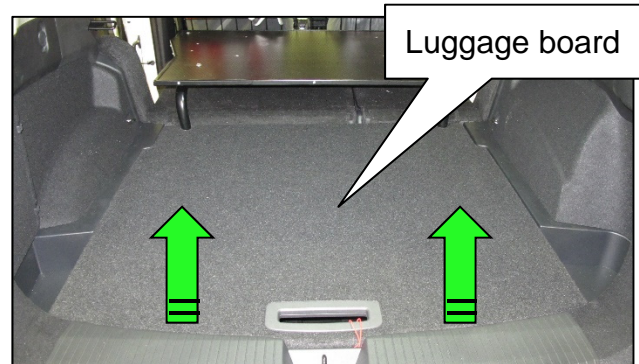


Figure 11

18. Remove the four (4) partition rear support mounting bolts.
- The bolts are 13 mm.
  - Place the bolts in a secure place, they will be reused later.

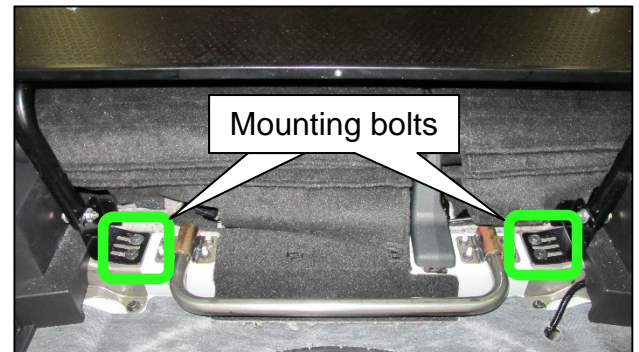


Figure 12

19. Carefully remove the partition platform from the vehicle.
- Remove the partition platform out the rear of the vehicle through the back door opening.
  - Be careful to not scratch interior components during removal.
  - Place the partition platform in a clean and secure area.

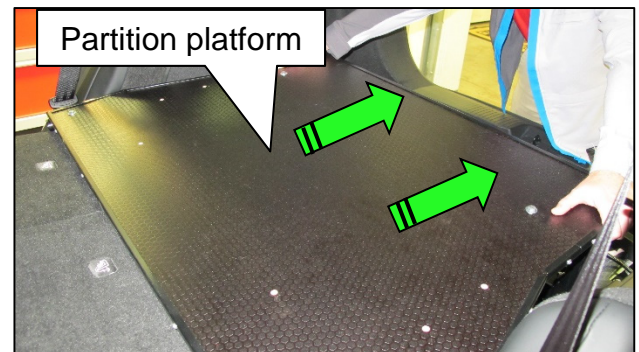


Figure 13

20. Move both second row seat backs to the full upright position.



Figure 14

21. Go to page 3, perform steps 2 - 13, then proceed to step 22 on page 9.



## Partition Installation (if equipped)

22. Fold both second row seat backs to the fully down position.



Figure 15

23. Carefully reinstall the partition platform into the vehicle.
  - Install the partition platform in the rear of the vehicle through the back door opening.
  - Be careful to not scratch interior components during installation.

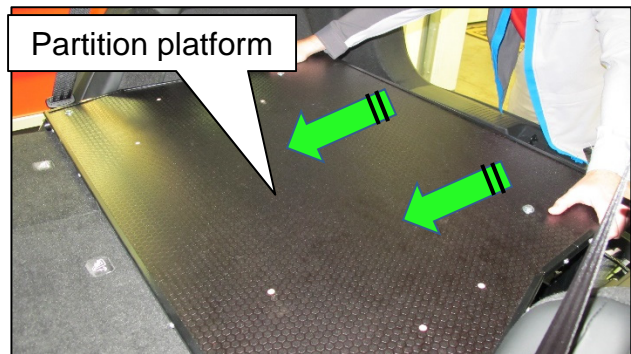


Figure 16

24. Install the support arm to partition mount bolts/washers and nuts on both sides (Figure 17 and Figure 18).
  - The bolt and nut size is standard 1/2 inch.
  - The nut on the backside will need to be held with a wrench while the bolt is tightened.
  - Bolt torque 39 N•m (4.0 kg-m, **29 ft-lb**)

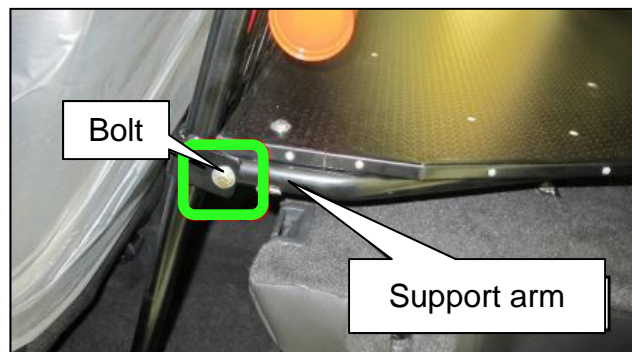


Figure 17

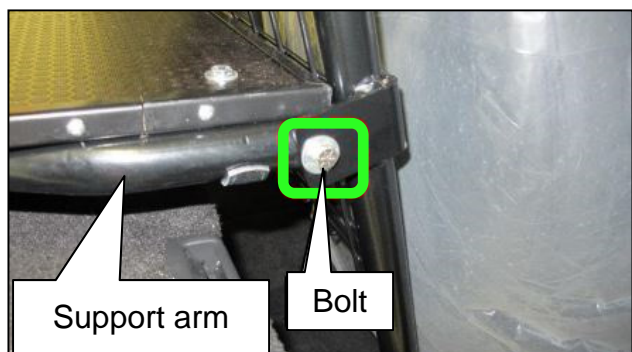


Figure 18

25. Install the four (4) partition rear support mounting bolts.
- The bolts are 13 mm.
  - Bolt torque 21 N•m (2.0 kg-m, **16 ft-lb**)

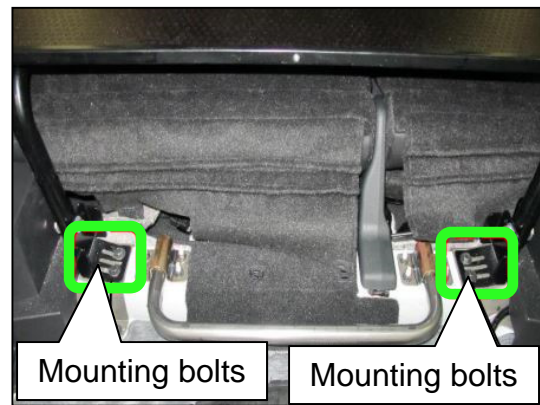


Figure 19

26. Install the luggage board.
- Slide the luggage board into the vehicle from the back door opening.
  - Slide the side hooks into the floor trim on each side.

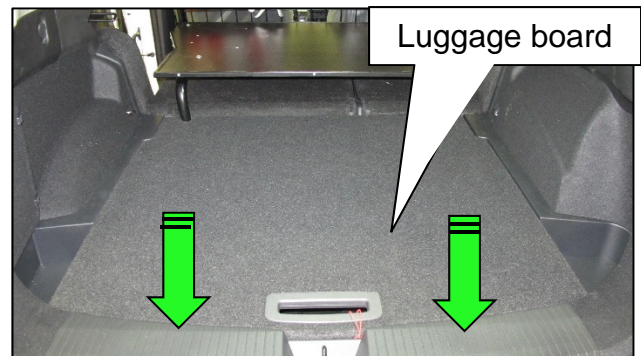


Figure 20

27. If applicable, place the cardboard box labeled "STOWED ITEMS" into the rear cargo area.

**IMPORTANT:** Do not open the cardboard box, it has a tamper proof seal.



Figure 21

28. Close both rear doors and the back door.
29. Remove the vehicle from the lift.



Figure 22

## PARTS INFORMATION

DESCRIPTION	PART NUMBER	QUANTITY
BELT ASSY – TONGUE, PRETENSIONER REAR RH (BLACK)	88884-6RR9A	1 As needed
BELT ASSY – TONGUE, PRETENSIONER REAR RH (BEIGE)	88884-6RR9B	1 As needed
BELT ASSY – TONGUE, PRETENSIONER REAR LH (BLACK)	88885-6RR9A	1 As needed
BELT ASSY – TONGUE, PRETENSIONER REAR LH (BEIGE)	88885-6RR9B	1 As needed

## CLAIMS INFORMATION

Submit a “CM” line claim using the following claims coding:

### Without Partition

CAMPAIGN (“CM”) ID	DESCRIPTION	OP CODE	FRT
PC915	Inspect Rear Seat Belt Assemblies using ASIST Tool, OK Condition	PC9150	0.2
	Inspect Rear Seat Belt Assemblies using ASIST Tool - Replace One Rear Seat Belt	PC9151	1.2
	Inspect Rear Seat Belt Assemblies using ASIST Tool - Replace Both Rear Seat Belts	PC9152	2.0

OR

### With Partition

CAMPAIGN (“CM”) ID	DESCRIPTION	OP CODE	FRT
PC915	Inspect Rear Seat Belt Assemblies using ASIST Tool, OK Condition – With Partition	PC9153	0.4
	Inspect Rear Seat Belt Assemblies using ASIST Tool - Replace One Rear Seat Belt – With Partition	PC9154	1.4
	Inspect Rear Seat Belt Assemblies using ASIST Tool - Replace Both Rear Seat Belts – With Partition	PC9155	2.2

## AMENDMENT HISTORY

PUBLISHED DATE	REFERENCE	DESCRIPTION
September 7, 2022	NTB22-078	Original bulletin published