



Vermeer MV Solutions, Inc.

Trenchless
Piedmont, SC 29673 USA

FIELD CAMPAIGN KIT #: VMV000028 **DATE:** 9 March 2023

For Dealer Reference: Service Bulletin #: SMV2022-015 Rev. 1

Trailer Frame Reinforcement Kit

**CAMPAIGN
TYPE:**

Mandatory - Product Safety

DEALER INSTALLATION ONLY

**CAMPAIGN
CATEGORY:**

Kit and Bulletin

MACHINE/ ATTACHMENT MODEL(S):	SERIAL NUMBERS:		Kit version
	Included	Excluded	
AIR533SDT	See attached listing on page 6 of this bulletin for specific serial/unit numbers	Trailer frames in the attached listing made from 8" I-beam.	VMV01
AIR535SDT			
AIR555SDT			
AIR573SDT			
AIR833SDT			
AIR835SDT			
AIR855SDT			
AIR873SDT			
AIRSDT			



Purpose:

REASON FOR REVISION 1:

- The kit instructions and bulletin are being revised to advise the dealership to measure the beam on the machine. If the beam measures 8", contact product safety at productsafety@vermeer.com to have the kit excluded.

VMV000028 has been created to provide the necessary parts and instructions to add a plate gusset to reinforce the trailer frame. The kit must be installed as soon as possible.

Special tools and conditions:

- None



WARNING: Use the following shutdown procedure before attempting to do any of the work described in this Kit.

Shutdown procedure

Stopping the machine

For your safety and the safety of others, follow shutdown procedure before working on the machine for any reason, including servicing, maintaining, cleaning, inspecting, unclogging or transporting machine, or as otherwise directed in Operator's manual.

Step 1: Make sure end of vacuum hose is clear of all spoils, debris, and other materials.

Step 2: Turn *Water Pump Switch* to OFF.

Step 3: Push *Throttle Switch* to SLOW. Idle engine five minutes to allow vacuum pump to cool down. This helps to prevent the buildup of condensation.

Step 4: Turn key switch to OFF to shut off engine. Remove the key.

Step 5: Pull trigger on any high-pressure water tool to relieve line pressure.

Step 6: Disassemble all water line connections, vacuum hoses, and tools. Stow properly on machine.

Step 7: Drain CVS Filter Housing / Cyclone.

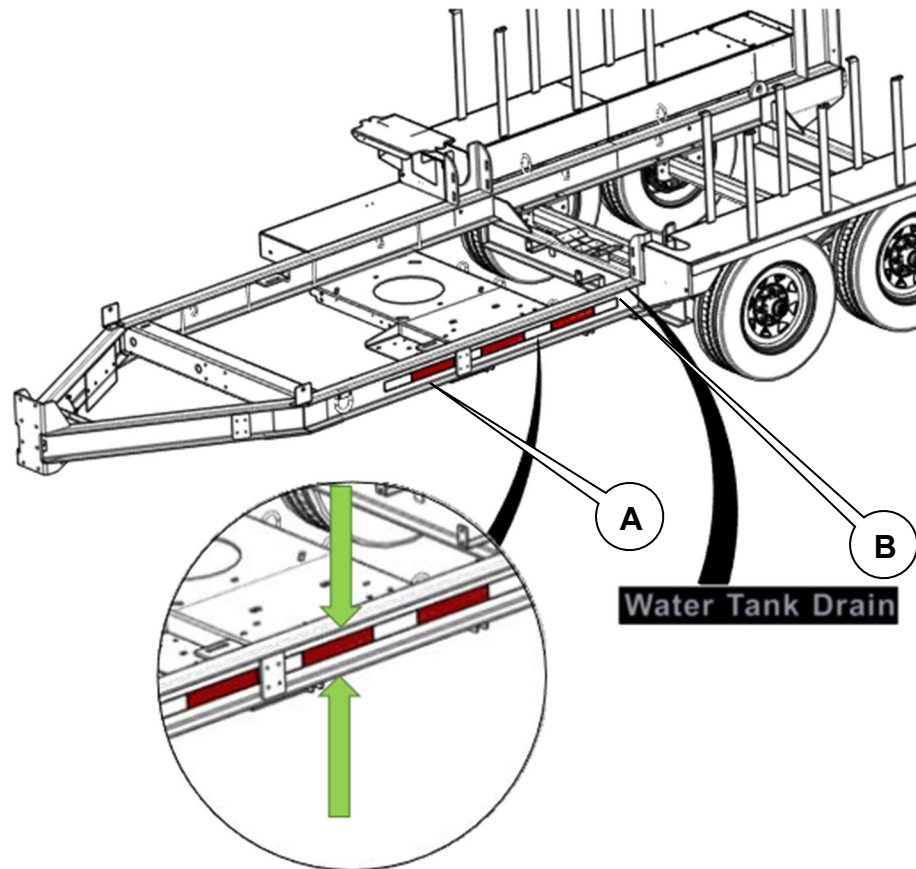


WARNING: Pressurized fluid can penetrate body tissue and result in death or serious injury. Leaks can be invisible. Keep away from any suspected leak. Relieve pressure in the hydraulic system before searching for leaks, disconnecting hoses, or performing any other work on the system. If you must pressurize the system to find a suspected leak, use an object such as a piece of wood or cardboard rather than your hands. When loosening a fitting where some residual pressure may exist, slowly loosen the fitting until oil begins to leak. Wait for leaking to stop before disconnecting the fitting. Fluid injected under the skin must be removed immediately by a surgeon familiar with this type of injury.

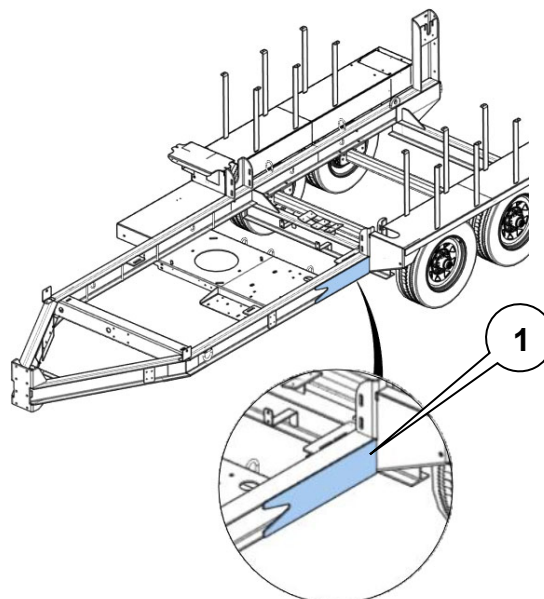
Procedure 1:

1. Measure the height of the I-Beam indicated by the green arrows in the enlarged balloon of Figure 1 below. If it is 8" tall, no change is required. If it is 6" tall, proceed to Step 2.
2. Refer to Figure 1 for parts list.

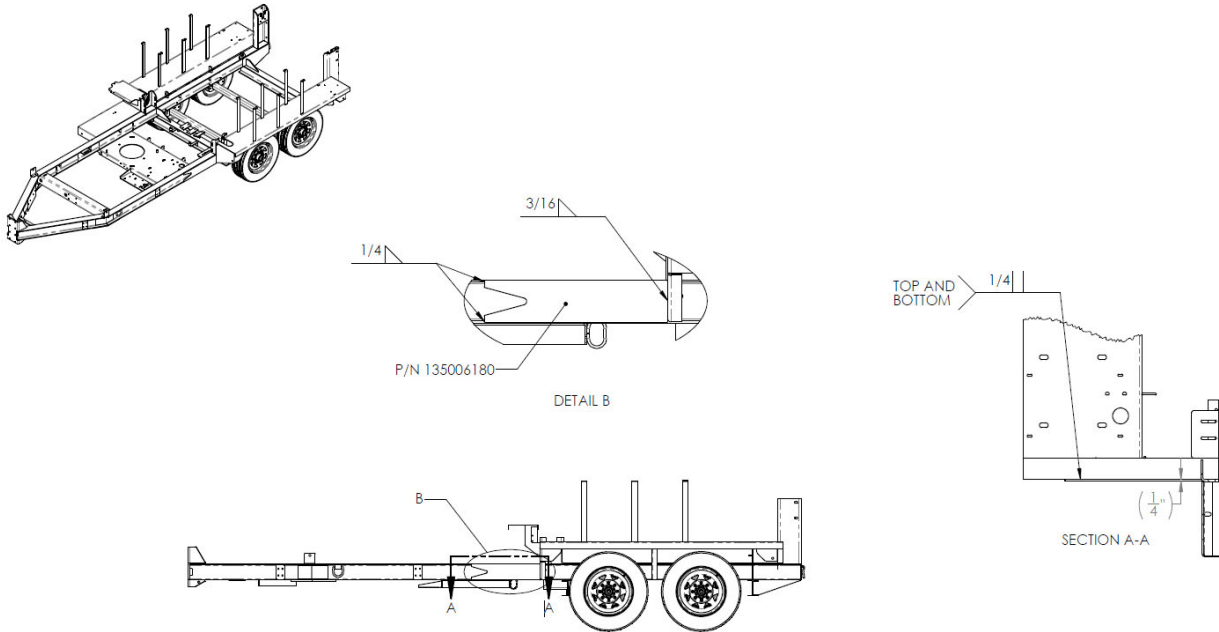
3. Remove the conspicuity tape (A) and “Water Tank Drain” decal (B) from the roadside I-beam.



4. Identify the location where the gusset (1) (p/n 135006180) will be welded onto the roadside I-beam. Grind the I-beam and all weld surfaces to remove paint prior to welding.

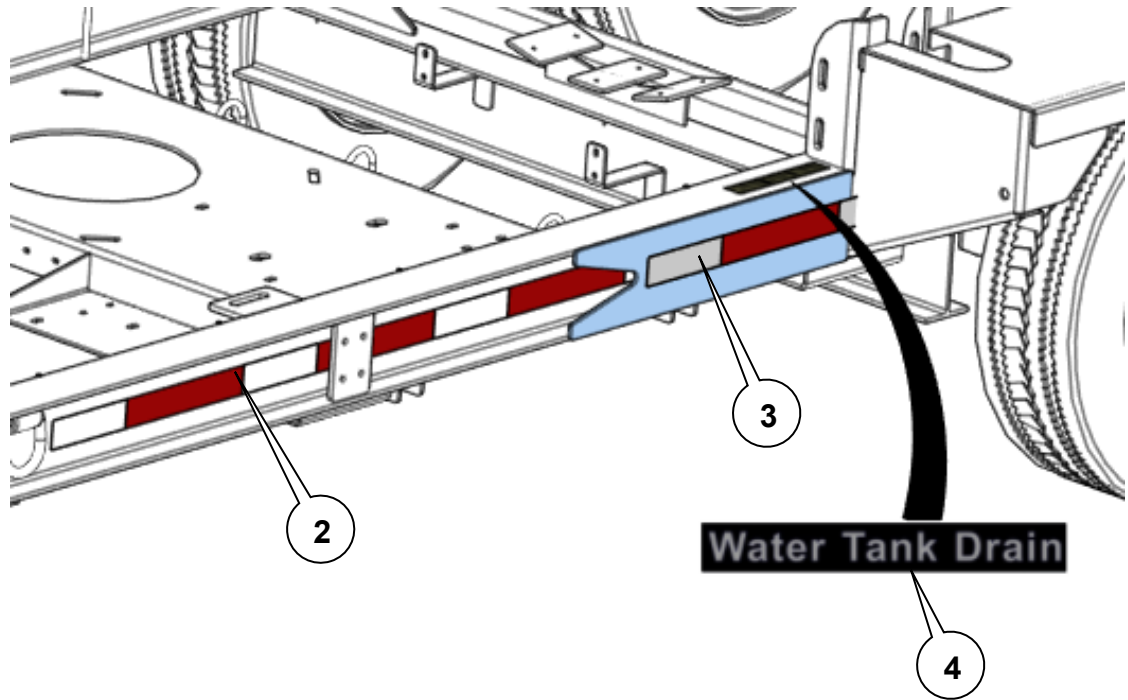


5. Use a weld blanket to protect the fuel tank and hoses behind weld location.
6. Position the gusset (1) (shown on previous page) on the I-beam and weld per the specifications shown in "DETAIL B" below.



7. Grind all welds and weld splatter. Clean all surfaces on the I-beam, gusset, and fenders. Paint all exposed surfaces. Allow paint to dry thoroughly.
8. Clean the areas where conspicuity tape and decal will be applied with soap and water. Allow to dry thoroughly.

9. Apply conspicuity tape (2)(3) and the "WATER TANK DRAIN" decal (4) as shown below.



AFFECTED MACHINES - VMV010028

Model	VIN	SERIAL/ UNIT	Model	VIN	SERIAL/ UNIT
AIR533SDT			AIR855SDT		
AIR533SDT			AIR855SDT		
AIR533SDT			AIR855SDT		
AIR535SDT			AIR855SDT		
AIR535SDT			AIR855SDT		
AIR555SDT			AIR855SDT		
AIR555SDT			AIR855SDT		
AIR555SDT			AIR855SDT		
AIR555SDT			AIR873SDT		
AIR555SDT			AIR873SDT		
AIR555SDT			AIR873SDT		
AIR573SDT			AIR873SDT		
AIR833SDT			AIR873SDT		
AIR833SDT			AIR873SDT		
AIR833SDT			AIRSDT		
AIR833SDT			AIRSDT		
AIR833SDT			AIRSDT		
AIR835SDT			AIRSDT		
AIR855SDT			AIRSDT		
AIR855SDT			AIRSDT		
AIR855SDT			AIRSDT		
AIR855SDT			AIRSDT		
AIR855SDT					

Figure 1

UNIT OWNER COPY:
Insert in parts manual
for future reference.

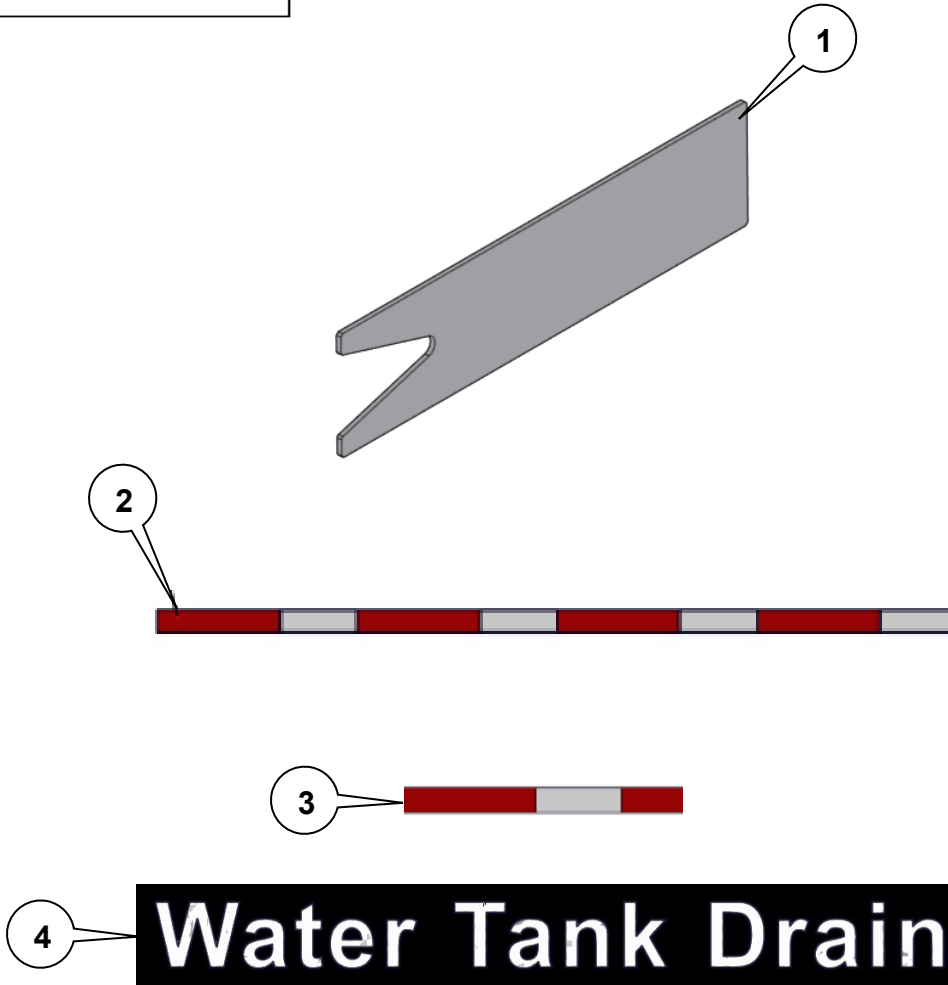


Figure 1 parts list			
REF. NO.	PART NO.	DESCRIPTION	VMV QTY.
1	135006180	GUSSET, AIR TRAILER	1
2	P-0485	2" SAFETY STRIP TAPE 48" LENGTH	1
3	P-0485	2" SAFETY STRIP TAPE 18" LENGTH	1
4	P-0763-DEC	DECAL - "WATER TANK DRAIN", 1.5 X 8.5	1
		Kit includes all items in Figure 1 parts list.	