



GROUP	MODEL
Safety Recall Campaign	2022MY Sorento (MQ4a) Telluride (ON)
NUMBER	DATE
SC244	July 2022

## SAFETY RECALL CAMPAIGN

SUBJECT: **SPARE TIRE INSPECTION & REPLACEMENT (SC244)**

This bulletin provides information to inspect and, if necessary, replace the spare tire on certain 2022MY Sorento (MQ4a) vehicles produced from March 28, 2022 through June 10, 2022 and certain Telluride (ON) vehicles produced from June 10, 2022 through June 13, 2022. The affected vehicles may have been equipped with an incorrect-size spare tire during assembly. An incorrect-size spare tire can adversely affect the anti-lock braking system (ABS) and/or traction control system (TCS), thereby increasing the risk of a crash. Follow the procedure outlined in this publication to inspect the spare tire and if necessary, replace it with the correct-size part. Before conducting the procedure, verify that the vehicle is included in the list of affected VINs. The correct spare tire sizes are as follows:

**Sorento (MQ4a):**  
**17" in. Spare Tire**  
Size: T135/90D17



**Telluride (ON):**  
**18" in. Spare Tire**  
Size: T155/90R18



### NOTICE

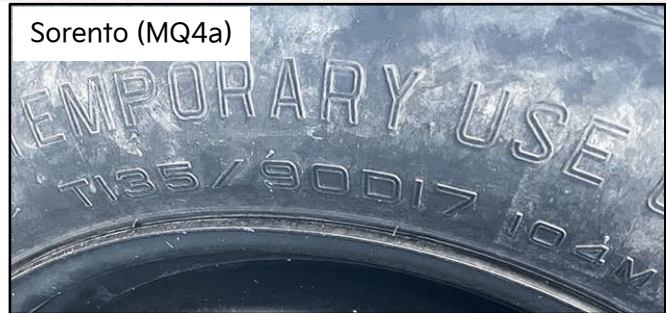
There is no charge to the vehicle owner for this repair. Under applicable law, you may not sell or otherwise deliver any affected vehicle until it has been repaired pursuant to the procedures set forth in this bulletin.

To assure complete customer satisfaction, always remember to refer to WebDCS Warranty Coverage (validation) Inquiry Screen (Service → Warranty Coverage → Warranty Coverage Inquiry) for a list of any additional campaigns that may need to be performed on the vehicle before returning it to the customer.

**Inspection Procedure:**

1. Locate the spare tire underneath the rear of the vehicle.
2. Confirm that the correct tire size is equipped on the vehicle.
  - **Sorento (MQ4a): T135/90D17**
  - **Telluride (ON): T155/90R18**

**Note:** Tire size should match the stated number on the door jamb label.



2. Is the vehicle equipped with the correct spare tire size applicable for that model?
  - **YES:** It is the correct tire. No further action is needed.
  - **NO:** It is the incorrect tire. Order the correct spare tire using the part number provided in the 'Required Part's table on page 3 and replace it.

**Affected Models - VIN List**

Sorento (MQ4a) VINs	Telluride (ON) VINs
5XYRGDLC6NG114182	5XYP6DHC6NG297392
5XYRHDLF7NG129636	5XYP3DHC1NG297972
5XYRLDLC2NG131444	5XYP6DHC8NG298138
5XYRG4LC3NG132025	
5XYRL4LC8NG131948	

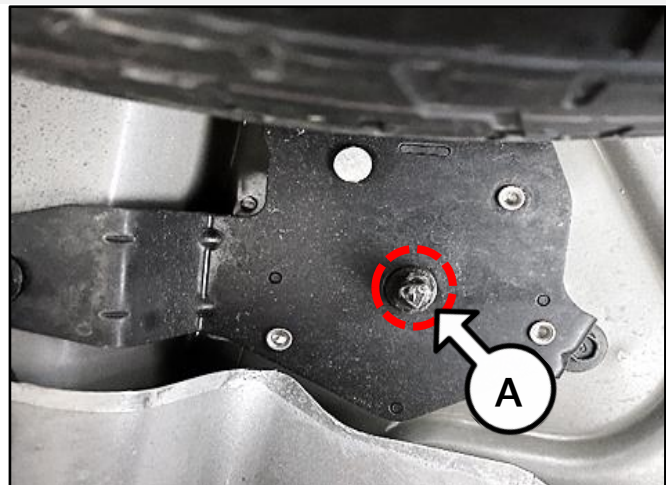
**Replacement Procedure:**

1. Using a ratchet and 3/8" socket, loosen the spare tire retaining bracket bolt (A) to remove the incorrect spare tire.

**CAUTION**

Use a hand tool to remove the bolt (A). Do not use an impact gun.

2. Install the correct spare tire for the applicable model.



SUBJECT:

**SPARE TIRE INSPECTION & REPLACEMENT (SC244)****AFFECTED VEHICLE RANGE:**

Model	Production Date Range
Sorento (MQ4a)	March 28, 2022 to June 10, 2022
Telluride (ON)	June 10, 2022 to June 13, 2022

**REQUIRED PART:**

Model	Part Name	Part Number	Qty.
Sorento (MQ4a)	Steel Wheel	52919 R5100	1
Telluride (ON)		52919 L0950	

Dealer to order from PDC.

Model	Part Name	Part Number	Qty.
Sorento (MQ4a)	Continental Tire	T135/90D17	1
Telluride (ON)	Kumho Tire	T155/90R18	
All	Valve Stem	N/A	1

Dealer to order tire from Dealer Tire at: (866) 542-8473. Valve stem can be sourced locally.

**WARRANTY INFORMATION:****N Code: N99 C Code: C99**

Model	Claim Type	Causal P/N	Qty.	Repair Description	Labor Op Code	Op Time	Replacement P/N	Qty.
MQ4a	R	52919 R5100	0	(SC244) Spare Tire Inspection	221A12IO	0.2 M/H	N/A	0
ON		52919 L0950						
MQ4a		52919 R5100	1	(SC244) Spare Tire Inspection + Spare Wheel & Tire Replacement*	221A12RO	0.5 M/H	N/A	0
ON		52919 L0950						

**\*Refer to Warranty Bulletin 2022-28 for claim submission procedures.****NOTICE**

VIN inquiry data for this repair is provided for tracking purposes only. Kia retailers should reference **SC244** when accessing the WebDCS system.

