

RECALL 22V477, 2022-358 REMEDY INSTRUCTIONS



Make(s): CATALINA & AURORA
Model(s): SEE BELOW
Model Year(s): 2020, 2021 & 2022

Concern:
THE BATTERY/HOUSE AND THE
BREAKAWAY WIRING IS INCORRECT ON
THE BATTERY DISCONNECT.

Repair Code: RC-003-22-00-004205
Allotted Time: .30 HRS.
Inspection Code: RC-003-05-00-004204
Allotted Time: .10 HRS.
Photo(s) Required: YES
Prior Authorization Required: NO
Part(s) Kit Number: N/A
Part(s) Return: N/A

Disconnect the vehicles' battery Positive and Negative, disconnect any House battery(s) Positive and Negative, if equipped with a generator ensure it is off and lastly, ensure the vehicle is disconnected from shore power. Block any tires/wheels to prevent the vehicle from rolling. Failure to do so may result in electrocution, fire or other personal injury, property damage and/or death.

CERTAIN 2020 THROUGH 2022 CATALINA AND AURORA TRAVEL TRAILER RECREATIONAL VEHICLES.

STEP 1: LOCATE AND REMOVE SCREWS HOLDING THE BATTERY DISCONNECT FROM THE FRAME (FIG. 1);

STEP 2: CUT AN ACCESS HOLE ROUGHLY 12" X 12" DIRECTLY BEHIND THE FRONT CROSS MEMBER AND BATTERY DISCONNECT. SET 12" X 12" UNDERBELLY ASIDE FOR LATER USE. THIS WILL GIVE YOU ACCESS TO THE JUNCTION BOX AND AUTO-RESET MINI BREAKERS (FIG. 2);

STEP 3: LOCATE THE MINI-BREAKER ON THE FAR RIGHT WITH THE SOLID BLACK WIRE CONNECTED TO THE TOP STUD OF THE MINI-BREAKER. LOOSEN AND REMOVE NUT FROM THE MINI-BREAKER STUD AND PULL THE BLACK WIRE OFF THE STUD OF THE MINI-BREAKER;

STEP 4: LOCATE THE CRIMPED ON EYELET ON THE BLACK WIRE, SNIP OFF THE EYELET. STRIP THE BLACK WIRE AND CRIMP ON A 3/8" EYELET. (EYELET SHALL BE OF THE CORRECT SIZE TO FIT THE BATTERY DISCONNECT LUG);

STEP 5: LOOSEN AND REMOVE THE NUT FROM STUD ON THE BATTERY DISCONNECT THAT IS ASSOCIATED WITH THE CONSTANT POWER. CONNECT THE BLACK WIRE FROM THE BREAKAWAY SWITCH TO THE STUD CONNECTED DIRECTLY TO THE BATTERY (FIG. 3);

STEP 6: TIGHTEN NUT DOWN ONTO THE STUD;

STEP 7: REATTACH THE BATTERY DISCONNECT TO THE FRONT CROSS MEMBER. USE THE SAME FOUR (4) HOLES TO REMOUNT THE DISCONNECT. TAKE GREAT CARE TO NOT SNAP OR STRIP THE SCREWS. TAKE CARE TO NOT OVER TIGHTEN THE BATTERY DISCONNECT EXCESSIVE TORQUE MAY RESULT IN A BROKEN BATTERY DISCONNECT HOUSING.

NOTE: BREAKAGE AS A RESULT OF REINSTALLING THE BATTERY DISCONNECT IS NOT COVERED UNDER THIS RECALL. YOUR DEALERSHIP WILL BE RESPONSIBLE FOR REPLACING THE BATTERY DISCONNECT AT NO CHARGE TO THE OWNER. THIS PART MAY BE ORDERED FROM CATALINA SEPARATELY, AS/IF NEEDED.

STEP 8: TEST CIRCUIT WITH DISCONNECT IN THE "OFF" POSITION TO ENSURE IT IS IN WORKING ORDER.

STEP 9: USE BLACK TAPE SUCH AS GORILLA TAPE TO SECURE THE 12" X 12" UNDERBELLY PANEL BACK TO THE VEHICLE. **ENSURE THE PATCH IS PRESENTABLE** TO THE CUSTOMER. THIS WILL ALSO HELP IF IN THE FUTURE THE CUSTOMER OR A DEALER NEEDS TO ACCESS THE CONNECTIONS FOR THE 7 WAY CORD.

STEP 10: CLAIM REPAIR CODE.

PHOTOS ON THE NEXT PAGE.

RECALL 22V477, 2022-358 REMEDY INSTRUCTIONS



Make(s): CATALINA & AURORA
Model(s): SEE BELOW
Model Year(s): 2020, 2021 & 2022

Concern:
THE BATTERY/HOUSE AND THE
BREAKAWAY WIRING IS INCORRECT ON
THE BATTERY DISCONNECT.

Repair Code: RC-003-22-00-004205
Allotted Time: .30 HRS.
Inspection Code: RC-003-05-00-004204
Allotted Time: .10 HRS.

Photo(s) Required: YES
Prior Authorization Required: NO
Part(s) Kit Number: N/A
Part(s) Return: N/A

FIGURE 1



FIGURE 2 (VIEW FROM TOP)

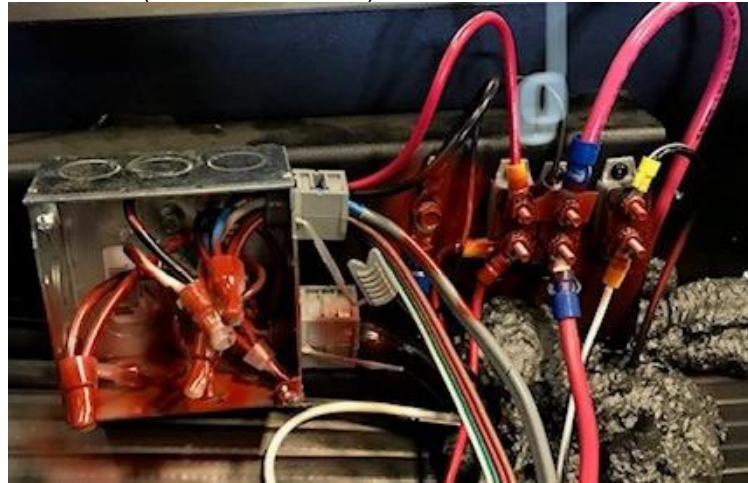


FIGURE 3

