

Recall Campaign Bulletin



Mercedes-Benz

Campaign No. 2022070006, August 2022

Revision A 08/09/2022

TO: ALL MERCEDES-BENZ CENTERS

SUBJECT: **Model GLS-Class (167 platform)**
Model Year 2020

Repair Upfront Airbag Sensor Wiring Harness Routing

Mercedes-Benz AG ("MBAG"), the manufacturer of Mercedes-Benz vehicles, has determined that on certain Model Year ("MY") 2020 GLS (167 platform) vehicles, the wiring harness to an upfront SRS sensor might be incorrectly positioned. As a result, the wiring harness may be susceptible to damage in the event of a frontal impact. In certain frontal crash circumstances, a second-stage frontal airbag deployment may be triggered when only a first-stage deployment is required. In such instances, certain requirements of FMVSS 208 regarding occupant load in one specific crash test might not be fully satisfied and may increase the risk of injury in a crash. An authorized Mercedes-Benz dealer will correct the wiring harness routing on the affected vehicles.

Prior to performing this Campaign:

- VMI must always be checked before performing campaigns to verify that the campaign is required on a specific vehicle. Always check for any other open campaigns, and perform accordingly.
- Please review the entire Campaign bulletin and follow the repair procedure exactly as described.

Approximately 80 vehicles are affected.

Order No. P-RC-2022070006

This bulletin has been created and maintained in accordance with MBUSA-SLP S423QH001, Document and Data Control, and MBUSA-SLP S424HH001, Control of Quality Record

Recall Campaign Bulletin

Recall Campaign Bulletin

Recall Campaign Bulletin

Recall Campaign Bulletin

Recall Campaign Bulletin

Rework electrical wiring harness for front left acceleration sensor

i The figure numbering has been updated.

Work Procedure

1. Remove front section from the front left fender liner (**figure 1**).

i For basic data, see AR88.10-P-1301ME.



Figure 1

2. Remove bracket (A, figure 2) including cable tie from wiring harness and remove cable tie on bracket (B, figure 2) on upper left longitudinal member.

i Bracket (A, figure 2) will no longer be installed!

i Figure 3 depicts the original brackets, cable ties, and wire routing for easier identification.

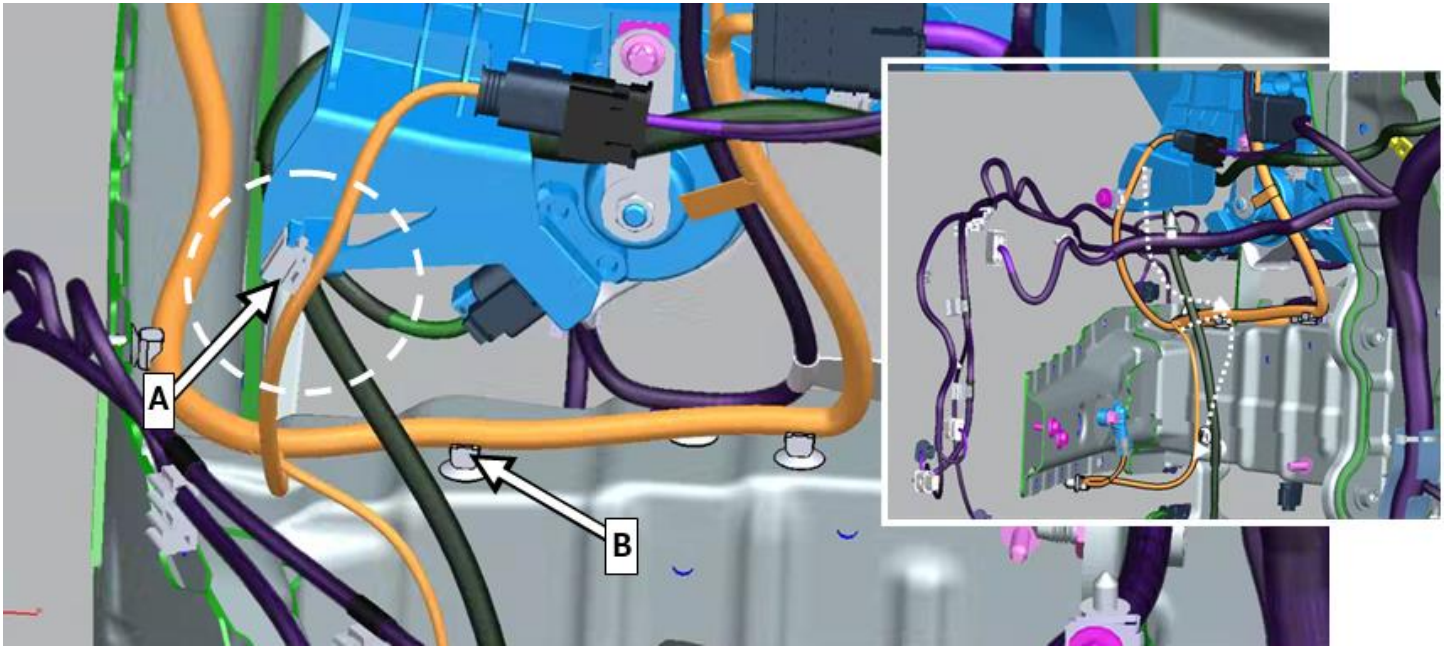


Figure 2

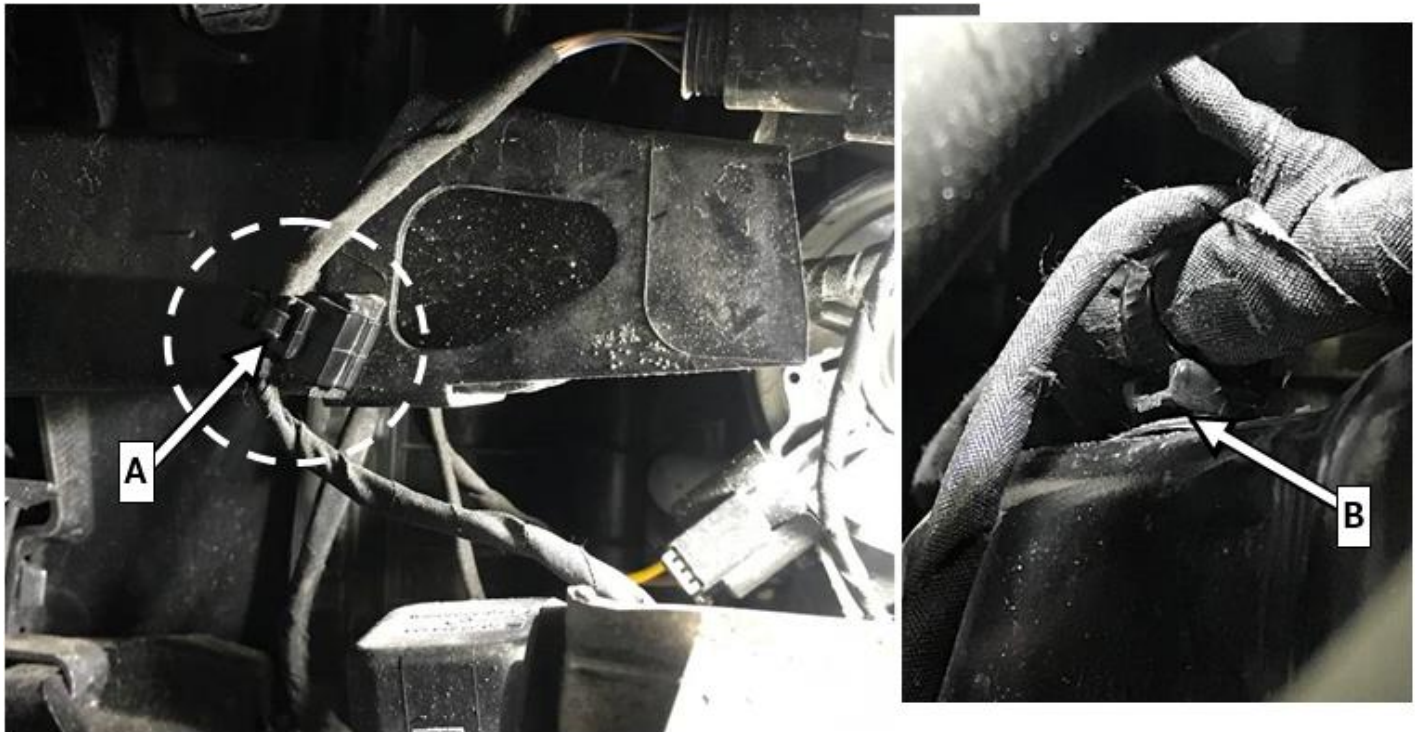


Figure 3

3. Route wiring harness according to **figure 4 and 5**. Fasten with new cable tie to bracket **(B, figure 4)**.

i **Figure 6** depicts the re-worked wiring path.

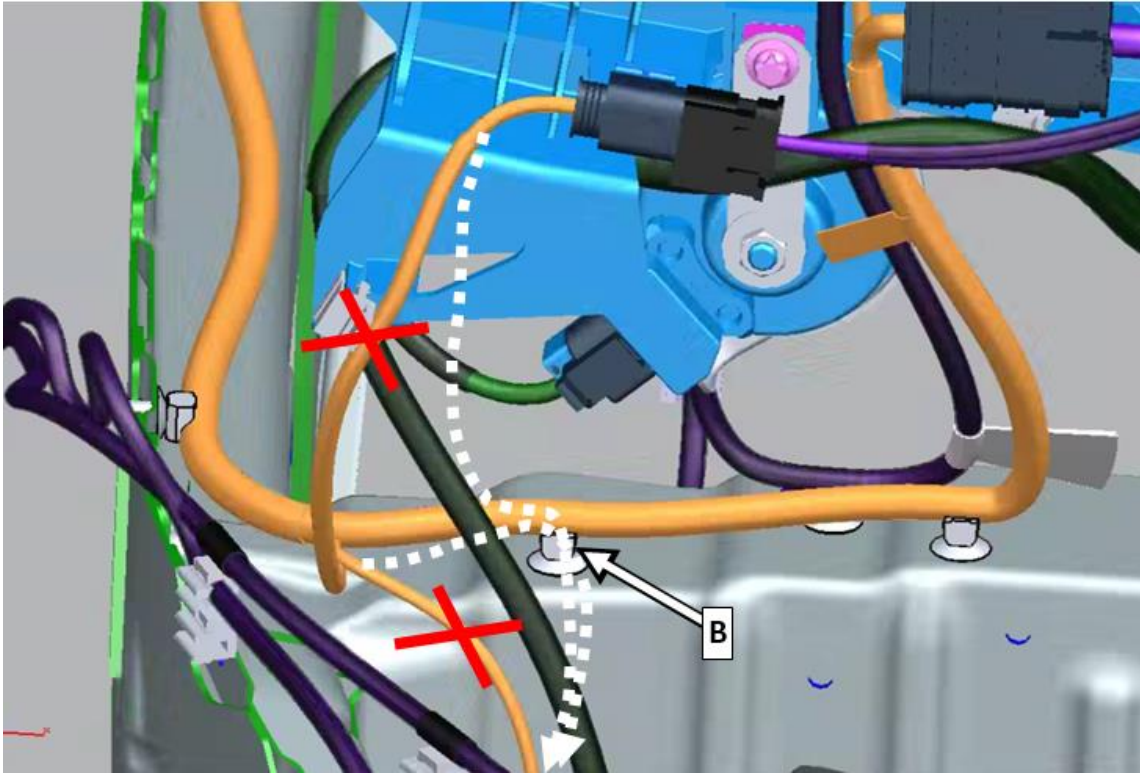


Figure 4

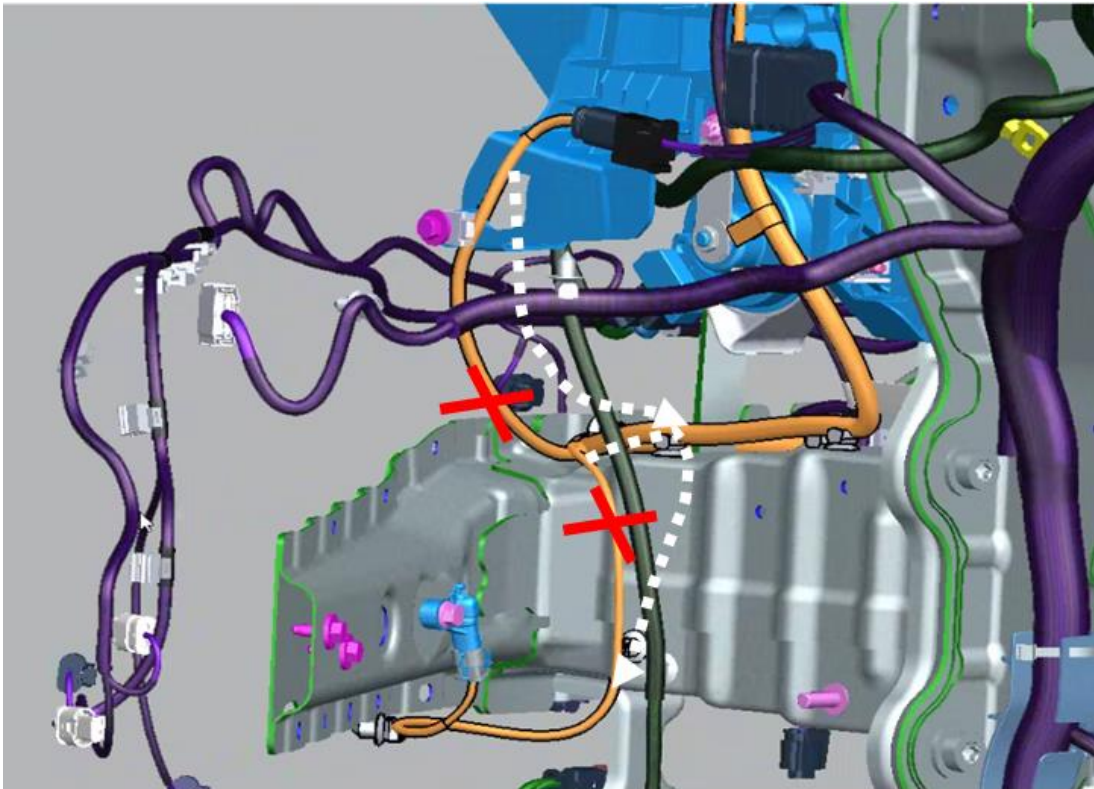


Figure 5

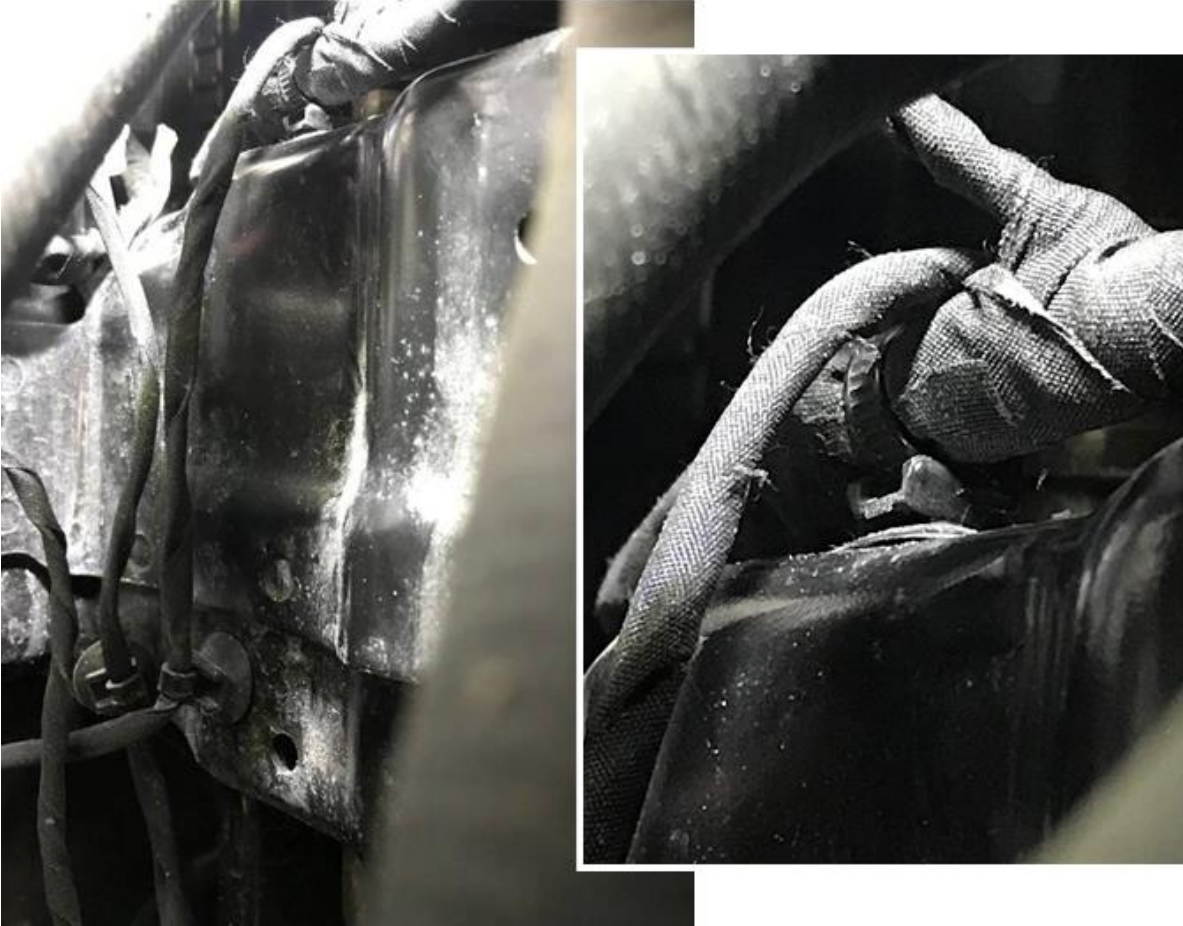


Figure 6

4. Install front section of front fender liner.

i For basic data, see AR88.10-P-1301ME.

Primary Parts Information

Qty.	Part Name	Part Number
1	Cable tie	A 001 995 56 90

i Small parts such as screws, lock nuts, sealing rings, cable ties, fluids, sealant, etc. are not listed in the parts list. The required small parts are taken into account in the budgeting.

i Note: The following allowable labor operation should be used when submitting a warranty claim for this repair:

Warranty Information

Damage Code	Operation Number	Description	Labor Time (hrs.)
88 910 09	02-0116	Rework electrical wiring harness for frontal acceleration sensor	0.7

i Note: Always check ASRA for the current OP-Code times. Labor times are subject to change and updates may not be reflected in this document.

