

TO: Mercedes-Benz Dealer Principals, General Managers, Sales Managers, Service Managers, Parts Managers	FROM: Gregory Gunther, Department Manager, Vehicle Compliance and Analysis, Engineering Services
RE: Recall Campaign Launch Notification Repair Upfront Airbag Sensor Wiring Harness Routing MY20 GLS-Class (167 platform)	DATE: August 9, 2022

IMPORTANT RECALL CAMPAIGN UPDATE

Please see the attached documents related to the campaign listed above.

Please note that all customer inquiries should be directed to the Customer Assistance Center at 1-800-FOR-MERCEDES.

Sincerely,

Gregory Gunther

Department Manager, Vehicle Compliance & Analysis



Recall Campaign Launch Notification

August 9, 2022

Campaign No. :

NHTSA ID

Campaign Desc. :

2022070006

22V466

22P8891009

**Repair Upfront Airbag Sensor Wiring
Harness Routing**

This is to notify you of an **update to the Recall Campaign** to rework the wiring harness to the upfront SRS sensor on **80** Model Year ("MY") 2020 GLS-Class (167 platform) vehicles. The recall campaign will be visible on the www.safercar.gov website and may generate questions from customers. Affected VINs were flagged in VMI as "OPEN" on **August 5, 2022**.

Background**Issue**

Mercedes-Benz AG ("MBAG"), the manufacturer of Mercedes-Benz vehicles, has determined that on certain Model Year ("MY") 2020 GLS (167 platform) vehicles, the wiring harness to an upfront SRS sensor might be incorrectly positioned. As a result, the wiring harness may be susceptible to damage in the event of a frontal impact. In certain frontal crash circumstances, a second-stage frontal airbag deployment may be triggered when only a first-stage deployment is required. In such instances, certain requirements of FMVSS 208 regarding occupant load in one specific crash test might not be fully satisfied and may increase the risk of injury in a crash.

What We're Doing

MBUSA will conduct a voluntary recall. An authorized Mercedes-Benz dealer will correct the wiring harness routing on the affected vehicles.

Parts

The remedy is available and can be performed.

Vehicles Affected

Vehicle Model Year(s)

2020

Vehicle Model

GLS-Class

Vehicle Populations

Total Recall Population

80

Total Vehicles in Dealer Inventory

0

Given this notice, it is a violation of Federal law for a dealer to sell or lease any new MY20 GLS-Class vehicles in dealer inventory covered by this notification until the vehicle has been repaired. Once the remedy is available, the vehicles will be flagged as "OPEN" and Work Instructions will be available in Star TekInfo. Once the repair is complete the vehicle may be sold or leased.

Loaner and demonstrator vehicles may continue to be driven, but must not be retailed until repaired. As a matter of normal service process, please check for other repair measures which might be applicable to the vehicle(s).

Additionally, given this notice, it is a violation of Federal Law for car rental companies to rent new MY20 GLS-Class vehicles covered by this notification until the vehicle has been repaired.

Next Steps/Notes

Customer Notification Timeline

Customer letters will be mailed on August 19, 2022.

AOMS/SOMS

AOMs – This recall may generate questions from your dealers. Please forward this notice to your dealers ASAP.

Rental Fleet Partners

This recall may affect vehicles in your fleet. Please contact your respective MBUSA fleet representative for further information and next steps. For repairs, please contact your preferred MBUSA dealer.

While we regret any inconvenience this may cause, MBUSA is determined to maintain a high level of vehicle quality and customer satisfaction. Please refer all customer inquiries to the Customer Assistance Center at 1-800-FOR-MERCEDES.



Recall Campaign Bulletin



Mercedes-Benz

Campaign No. 2022070006, August 2022

Revision A 08/09/2022

TO: ALL MERCEDES-BENZ CENTERS

SUBJECT: **Model GLS-Class (167 platform)**
Model Year 2020

Repair Upfront Airbag Sensor Wiring Harness Routing

Mercedes-Benz AG ("MBAG"), the manufacturer of Mercedes-Benz vehicles, has determined that on certain Model Year ("MY") 2020 GLS (167 platform) vehicles, the wiring harness to an upfront SRS sensor might be incorrectly positioned. As a result, the wiring harness may be susceptible to damage in the event of a frontal impact. In certain frontal crash circumstances, a second-stage frontal airbag deployment may be triggered when only a first-stage deployment is required. In such instances, certain requirements of FMVSS 208 regarding occupant load in one specific crash test might not be fully satisfied and may increase the risk of injury in a crash. An authorized Mercedes-Benz dealer will correct the wiring harness routing on the affected vehicles.

Prior to performing this Campaign:

- VMI must always be checked before performing campaigns to verify that the campaign is required on a specific vehicle. Always check for any other open campaigns, and perform accordingly.
- Please review the entire Campaign bulletin and follow the repair procedure exactly as described.

Approximately 80 vehicles are affected.

Order No. P-RC-2022070006

This bulletin has been created and maintained in accordance with MBUSA-SLP S423QH001, Document and Data Control, and MBUSA-SLP S424HH001, Control of Quality Record

Recall Campaign Bulletin

Recall Campaign Bulletin

Recall Campaign Bulletin

Recall Campaign Bulletin

Recall Campaign Bulletin

Rework electrical wiring harness for front left acceleration sensor

i The figure numbering has been updated.

Work Procedure

1. Remove front section from the front left fender liner (**figure 1**).

i For basic data, see AR88.10-P-1301ME.



Figure 1

2. Remove bracket **(A, figure 2)** including cable tie from wiring harness and remove cable tie on bracket **(B, figure 2)** on upper left longitudinal member.

i Bracket **(A, figure 2)** will no longer be installed!

i **Figure 3** depicts the original brackets, cable ties, and wire routing for easier identification.

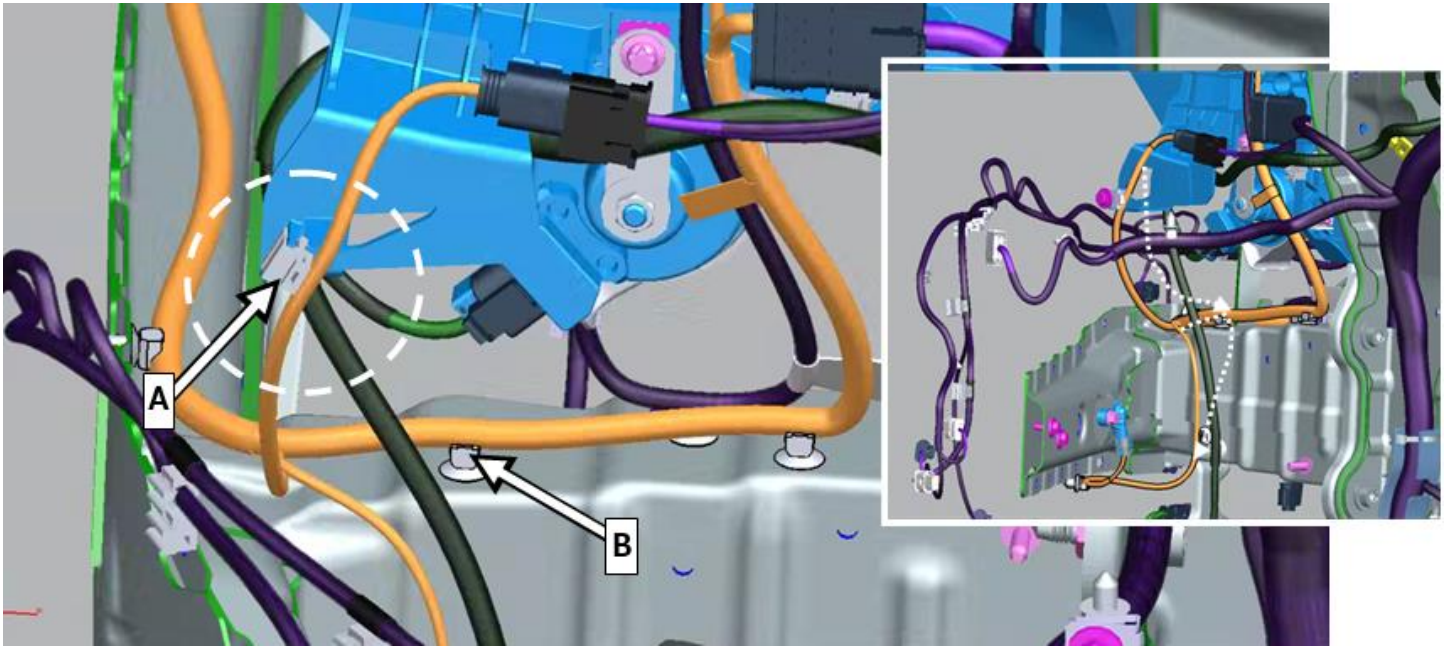


Figure 2

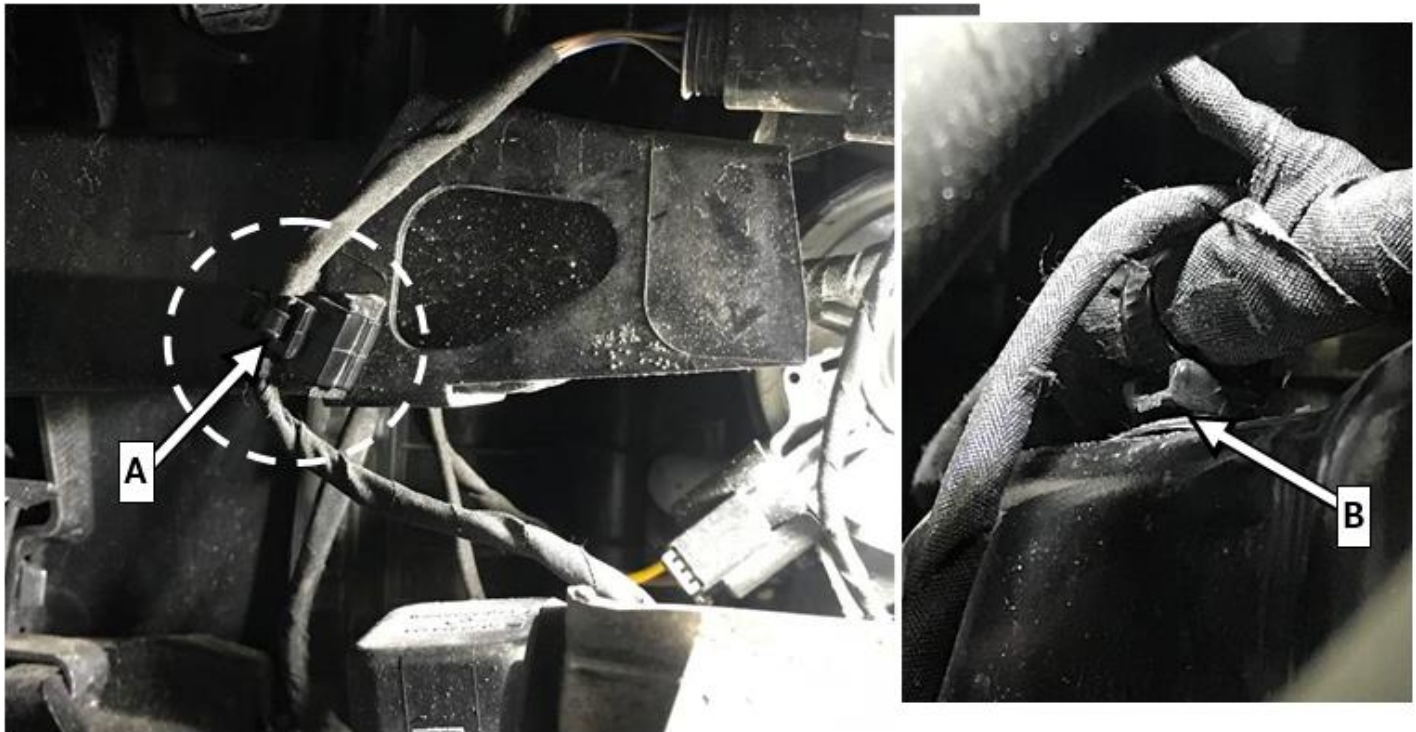


Figure 3

3. Route wiring harness according to **figure 4 and 5**. Fasten with new cable tie to bracket **(B, figure 4)**.

i **Figure 6** depicts the re-worked wiring path.

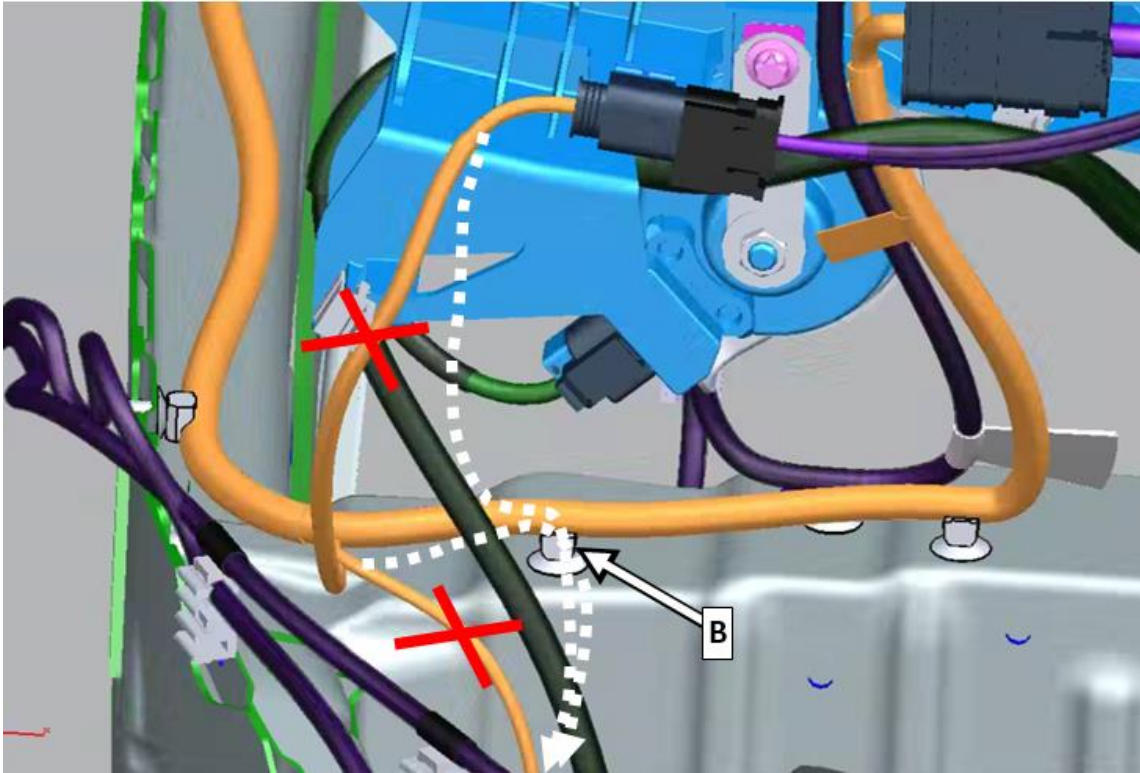


Figure 4

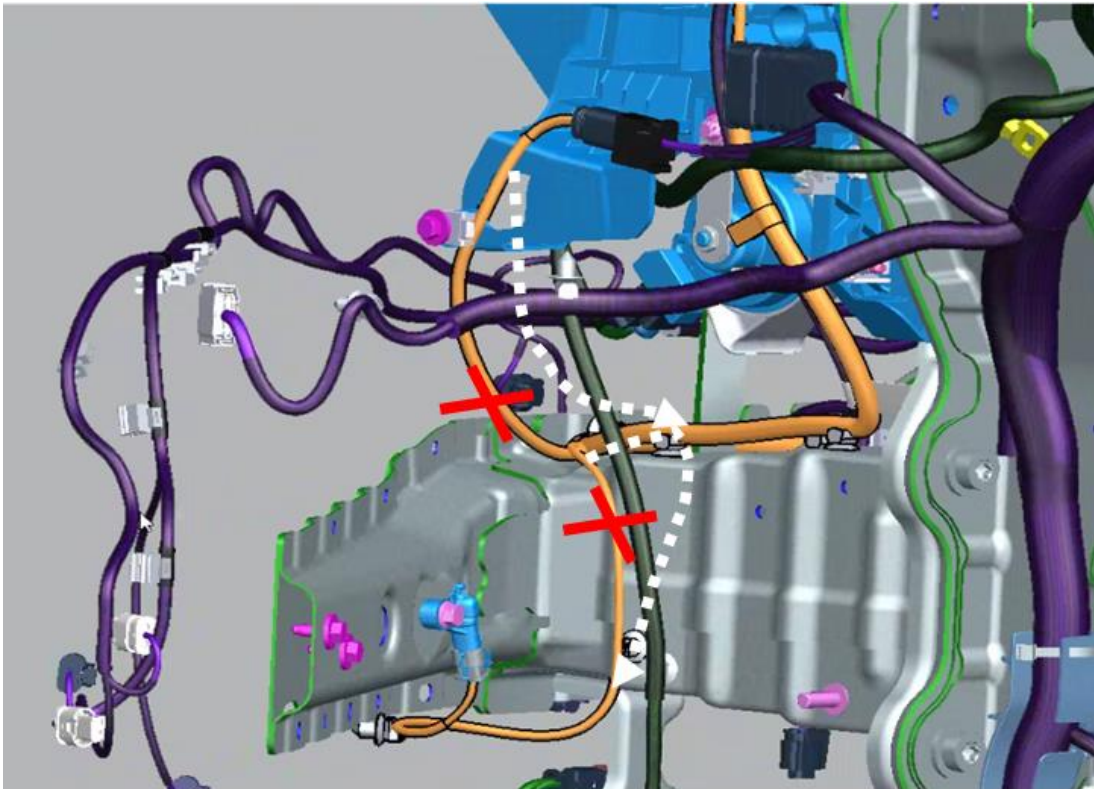


Figure 5



Figure 6

4. Install front section of front fender liner.

i For basic data, see AR88.10-P-1301ME.

Primary Parts Information

Qty.	Part Name	Part Number
1	Cable tie	A 001 995 56 90

i Small parts such as screws, lock nuts, sealing rings, cable ties, fluids, sealant, etc. are not listed in the parts list. The required small parts are taken into account in the budgeting.

i Note: The following allowable labor operation should be used when submitting a warranty claim for this repair:

Warranty Information

Damage Code	Operation Number	Description	Labor Time (hrs.)
88 910 09	02-0116	Rework electrical wiring harness for frontal acceleration sensor	0.7

i Note: Always check ASRA for the current OP-Code times. Labor times are subject to change and updates may not be reflected in this document.

