



## **IMPORTANT SAFETY RECALL**

### **Airstream Travel Trailer**

**NHTSA 22V-452 Transport Canada Recall Number: 2022-373**

**Subject: Dexter Axle Washer Replacement**

**Date:** 8/22/2022

**To: Airstream Dealer**

Operation Codes: TTSBR8901100

#### **PROBLEM:**

Airstream has become aware of a safety issue concerning the Dexter axles that use the NEV-R-LUBE bearings. There is a potential for the 42mm washer, that is installed in the cartridge bearing, to fail. In the event of a washer failure, this may lead to a hub separation, resulting in the loss of vehicle control, increasing the risk of personal injury and/or property damage.

#### **RANGE OF VEHICLES INVOLVED:**

Certain 2022 Airstream Caravel, Flying Cloud, Globetrotter, International & Pottery Barn Travel Trailers built between:  
**May 1, 2022 – June 21, 2022**

Serial Number Range: **035385 – 035393 & 559990 - 566164**

Note: Because our VINs do not run in a contiguous series, there will be units in the VIN range which will not be affected by this Safety Recall.

#### **Operation Code & Flat Rates:**

The time allowed for this repair is as follows:

TTSBR8901100 – Replace 42mm Washers = .50 hrs. Per Axle

#### **WARRANTY REIMBURSEMENT:**

A notice of this recall has been sent to affected retail owners. A copy of the Owner's letter is included for your review. This is a stop towing recall. If a customer calls you requesting an appointment, you should have them call Dexter Axle's Warranty Department at (Ph. 574-413-9066). If you currently have any of the affected customer units at your facility, the recall needs to be completed prior to returning the unit to the customer. If you have completed the recall on units in your inventory, or on visiting customer units, please follow the warranty reimbursement procedure. The time allowed for repair is .50 hrs. per axle.

#### **SERVICE ACTION:**

Replace the original, 42mm cartridge bearing washer, with the correct washer that has been correctly heat treated, quenched, and tempered. This will be done at no cost to the customer.



Please contact the **Airstream Warranty Department at 877-596-6111 Ext. 7491** to order the necessary parts to complete the recall remedy. These will be sent at no charge.

**Notice:**

**Per CFR § 577.13(b) - Notification to dealers and distributors.** It is a violation of Federal law for a dealer to deliver a new motor vehicle or any new or used item of motor vehicle equipment (including a tire) covered by the notification under a sale or lease until the defect or noncompliance is remedied.

encl. – Owners Letter, Repair Procedure



**Rick March**


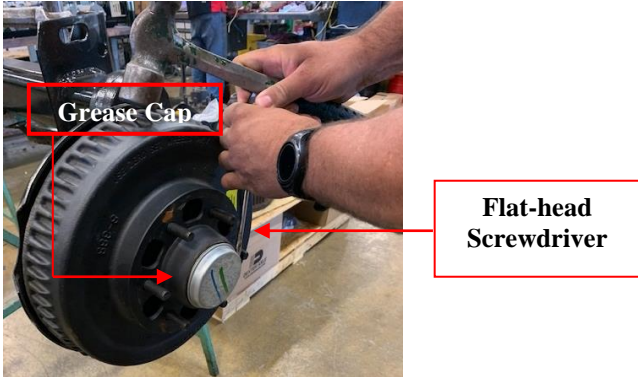
General Manager of Airstream Customer Service Group

Re: NHTSA Recall No. 22V-452  
Transport Canada 2022-373

**MATERIALS:** Torque Wrench with Readable Output or Clicker Style; 13/16" Deep well Socket; 1-7/16" 6 point Socket; Socket Extension; Snap Ring Pliers; Impact Gun and / or Breaker Bar; Rubber Mallet; Hammer; Flat-head Screwdriver; Equipment for securing the trailer such as 2 Bottle Jacks & Jack Stands; Wood Divider for placing between Jacks and Trailer; & Optional Floor Jack (See Trailer Mfg. Instructions). Safety Equipment Including, but not limited to, Safety Glasses, Gloves and Steel-Toed Shoes.

**⚠ CAUTION**

**Do not lift or support the trailer on any part of the axle or suspension system. Never go under any trailer unless it is properly supported on jack stands which have been rated for the load. Improperly supported vehicles can fall unexpectedly and cause serious injury or death.**

Replacing Nev-R-Lube Spindle Washer	
<p>1. Raise and support the trailer (or loose axle). Secure trailer according to Trailer Manufacturer's Instructions.</p>	<p><b>IMPORTANT!</b> <i>Securing the Trailer is the most Safety Critical Part of this Operation. Failure to follow Trailer Manufacturer Instructions Could Lead to Severe Injury or Death.</i></p>
<p>2. Remove the wheel nuts with an impact gun or breaker bar and socket and remove the tire &amp; wheel.</p>	
<p>3. Remove the Grease Cap using a cap remover, socket, or a hammer and flat head screwdriver.</p>	

**(i)**



**(ii)**



**(iii)**



**(iv)**



4. Removing the Spindle Washer:

- (i) remove the snap ring with snap ring pliers.
- (ii) remove the torque instruction washer by hand.
- (iii) remove the spindle nut with a socket wrench and 1-7/16" socket.

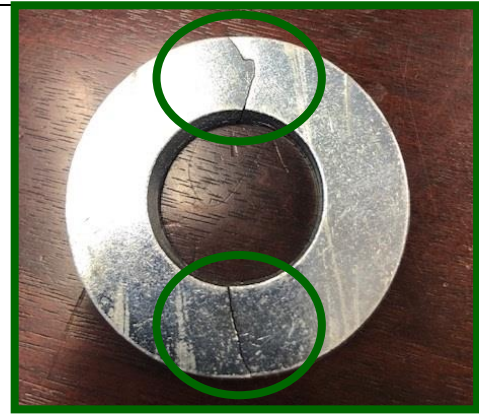
- (iv) remove the spindle washer by hand.

5. Inspect the Spindle Washer for fragmentation, crumbling, or breakage. If 100% of the Spindle Washer can be removed from the hub, **proceed to step 6** in this procedure.

**NOTE:** For best results inspecting a fragmented Spindle Washer for missing pieces, gently squeeze the fragmented pieces together and observe that all pieces of the washer are present.

If 100% of the Spindle Washer cannot be verified and removed from the hub cavity, the hub will need to be replaced. Please refer to hub replacement work instructions for **Nev-R-Lube** hubs.

CALL **574-413-9066** TO ORDER NEW NEV-R-LUBE HUBS FROM DEXTER WARRANTY.

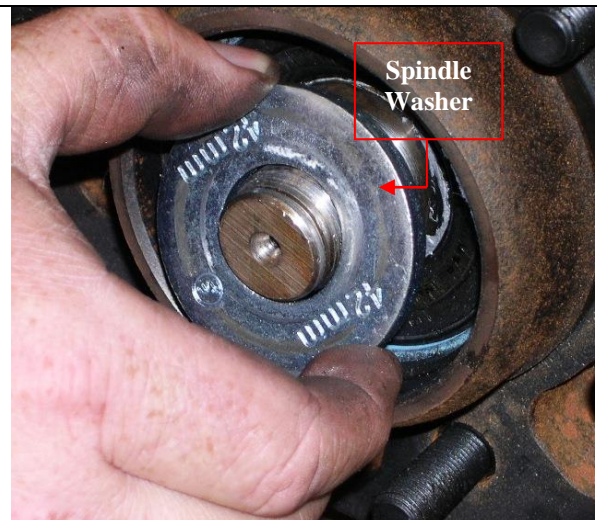


**ALL PIECES PRESENT. PROCEED WITH SPINDLE WASHER REPLACEMENT.**

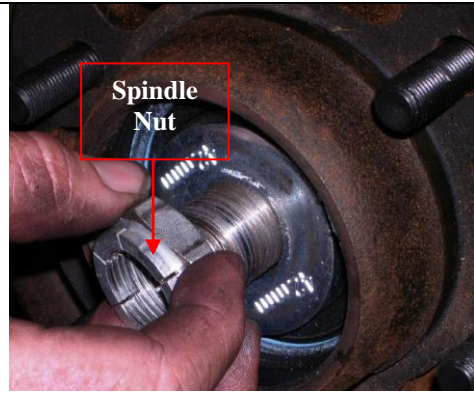


**SPINDLE WASHER IS MISSING PIECES WHICH COULD NOT BE LOCATED. THE HUB MUST BE REPLACED.**

6. Install the **NEW** spindle washer. Any Print or Vendor Markings on the Spindle Washer should be facing outboard towards the Technician / Installer.

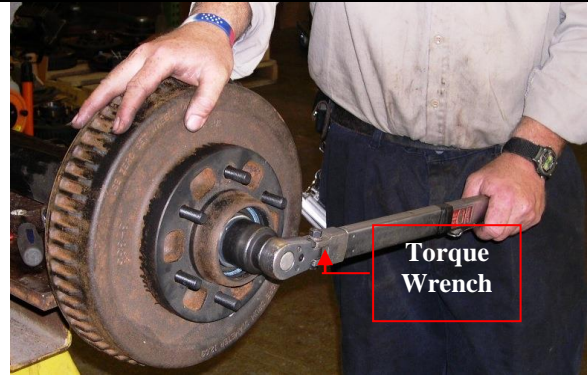


7. Install the Spindle Nut. Make sure to Start and run the Spindle Nut by Hand to avoid cross threading the Spindle Nut onto the Spindle.



8. Torque the spindle nut with a torque wrench while turning the hub on the spindle. This will seat and properly align the bearing cups.

**The spindle nut torque should be set between 145 and 155 ft-lbs for Nev-R-Lube axles.**





9. When working with a Nev-R-Lube axle,

- install the spindle washer by hand.
- install the spindle nut by hand.
- install the torque instruction washer by hand.
- install the snap ring with snap ring pliers.

10. Pull and push the hub assembly towards and away from you to check for excessive wheel end play.

**Note:** Slight wheel end play is acceptable. Any excessive end play may be corrected by re-torquing the spindle nut. See Nev-R-Lube Bearing End Play Inspection at the end of this Work Instruction for more details.



<p>11. Rotate the hub slowly forwards and backwards. The hub assembly should turn freely and smoothly or may have slight brake drag. Slight drag from the brake is acceptable.</p> <p><b>Note:</b> Readjusting the brake may correct any excessive dragging.</p>	
<p>12. Remount the tire &amp; wheel by tightening the wheel nuts with a torque wrench and socket.</p>	
<p>13. Remove the jacks, lower the trailer to the ground, and torque the wheel fasteners per the Trailer Manufacturer Instructions.</p> <p><b>The aluminum wheel torque should be set to 110 ft-lbs.</b></p>	

**NOTE:** NEV-R-LUBE BEARING END PLAY INSPECTION:

The following lists the maximum axial end play for each of the sizes of Nev-R-Lube bearing and the amount of tilt that can be expected. Since there are many wheel and tire combinations in use on trailers, the tilt is expressed in inches per inch. The movement as measured at the tire tread can be found by the following method:

Example: if the tilt value is shown as .003” per inch and the tire measures 30” in diameter, simply multiply .003” X 15” (1/2 tire diameter) = .045” which is the total expected movement at the tires’ outer diameter.

Bearing Size	End Play	Resultant Tilt Value
42 MM	.006” axial	.005” / Per Inch

It is important to note that most mounted tires will deflect easily when enough hand pressure is applied while shaking the tire. Excessive pressure will result in the perception that the bearings’ tilt is greater than it actually is. This same phenomenon will occur when checking any wheel end, even those equipped with conventional bearing sets.