



VOLUNTARY RECALL CAMPAIGN

Classification: BT22-015A	Reference: NTB22-052A	Date: August 31, 2022
------------------------------	--------------------------	--------------------------

VOLUNTARY SAFETY RECALL CAMPAIGN 2013-2016 PATHFINDER; HOOD LOCK ASSEMBLY

This bulletin has been amended. See AMENDMENT HISTORY on the last page.
Please discard previous versions of this bulletin.

CAMPAIGN ID #: R22A3
APPLIED VEHICLES: 2013-2016 Pathfinder (R52)

**Check Service COMM or Dealer Business Systems (DBS)
National Service History to confirm campaign eligibility.**

INTRODUCTION

Nissan is conducting this voluntary safety recall campaign on certain specific model year 2013-2016 Pathfinder vehicles, to inspect, clean, and lubricate the Hood Lock Assembly and the Secondary Latch, and if necessary, replace the Hood Lock Assembly, Secondary Latch, and the Hood Lock Release Cable. This service will be performed at no charge to the customer for parts or labor.

IDENTIFICATION NUMBER

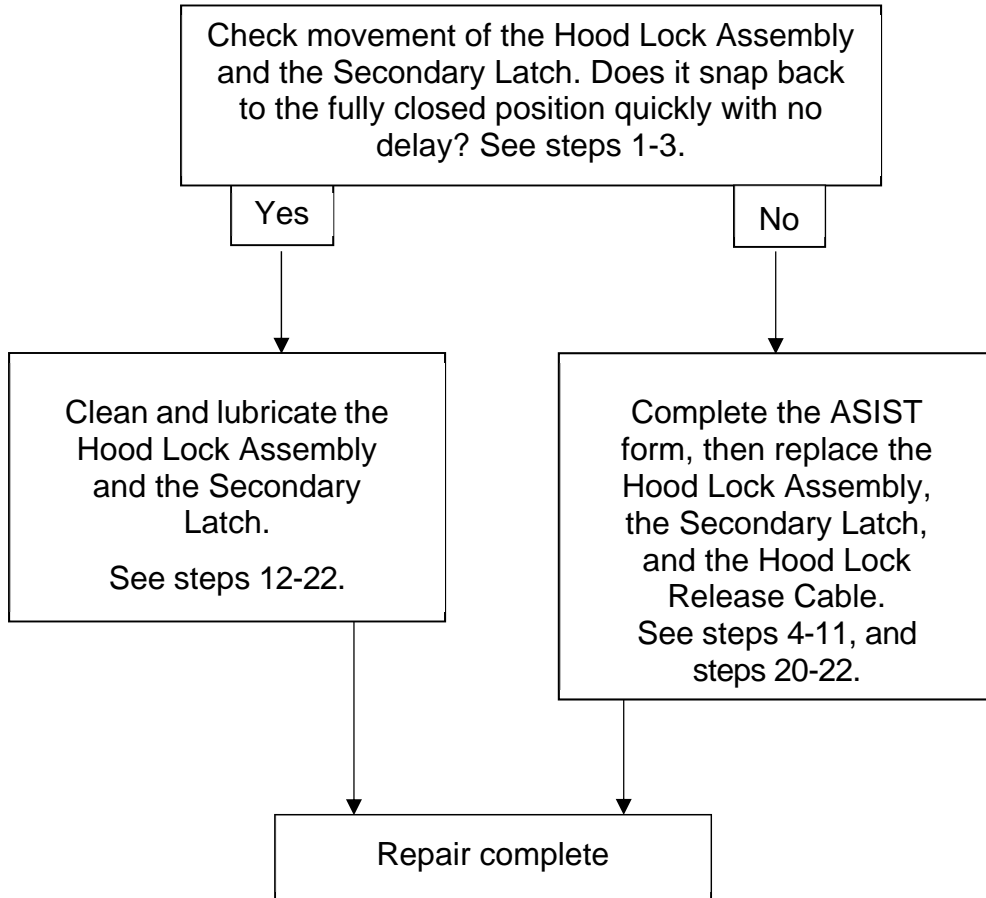
Nissan has assigned identification number R22A3 to this campaign. This number must appear on all communication and documentation of any nature dealing with this campaign.

DEALER RESPONSIBILITY

It is the dealer's responsibility to check Service COMM or Dealer Business Systems (DBS) National Service History for the campaign status on each vehicle falling within the range of this voluntary safety recall which for any reason enters the service department. This includes vehicles purchased from private parties or presented by transient (tourist) owners and vehicles in a dealer's inventory. **Federal law requires that new vehicles in dealer inventory which are the subject of a safety recall must be corrected prior to sale. Failure to do so can result in civil penalties by the National Highway Traffic Safety Administration.** While federal law applies only to new vehicles, Nissan strongly encourages dealers to correct any used vehicles in their inventory before they are retailed.

Bulletins are intended for use by qualified technicians, not 'do-it-yourselfers'. Qualified technicians are properly trained individuals who have the equipment, tools, safety instruction, and know-how to do a job properly and safely. **NOTE:** If you believe that a described condition may apply to a particular vehicle, DO NOT assume that it does. See your Nissan dealer to determine if this applies to your vehicle.

REPAIR OVERVIEW



SERVICE PROCEDURE

Check Hood Lock Assembly and Secondary Latch Movement

1. Open the hood, and set the hood support rod.

2. Place a clean fender cover to protect the core support cover (Figure 1).

- The release lever on the Secondary Latch must be above the fender cover and accessible.

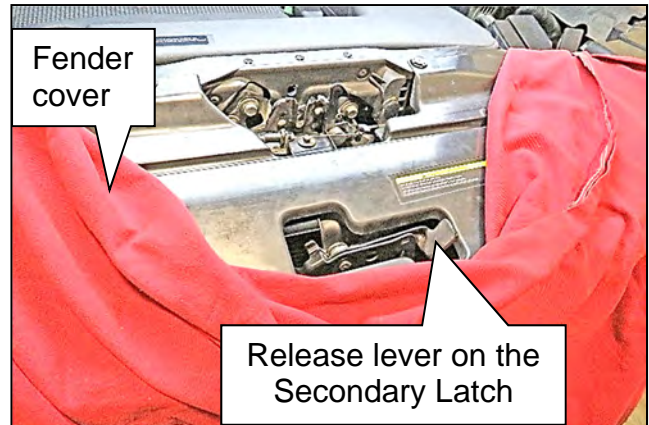


Figure 1

3. Move / cycle the release lever on the Secondary Latch five (5) times (Figure 2). When the release lever is released, does the Secondary Latch lock snap back quickly to the fully closed position without sticking?

- **Yes** – Skip to step 12 on page 7 to clean and lubricate the Secondary Latch and the Hood Lock Assembly.
- **No** – Continue to step 4 on page 4 and complete the ASIST form.

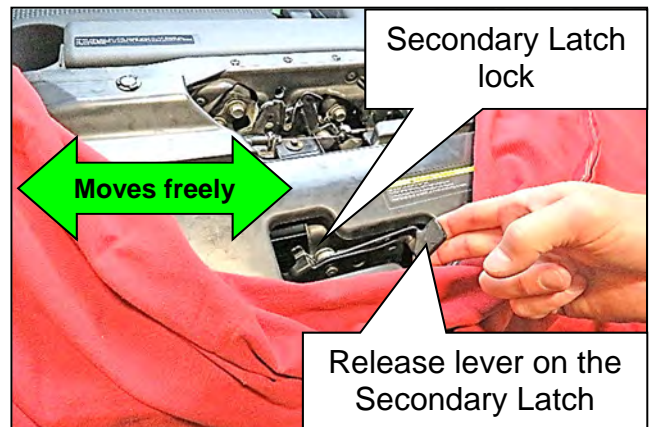


Figure 2

4. Open ASIST.
5. Select **Tech Support Info**, and then select **Bulletin Support Items**.

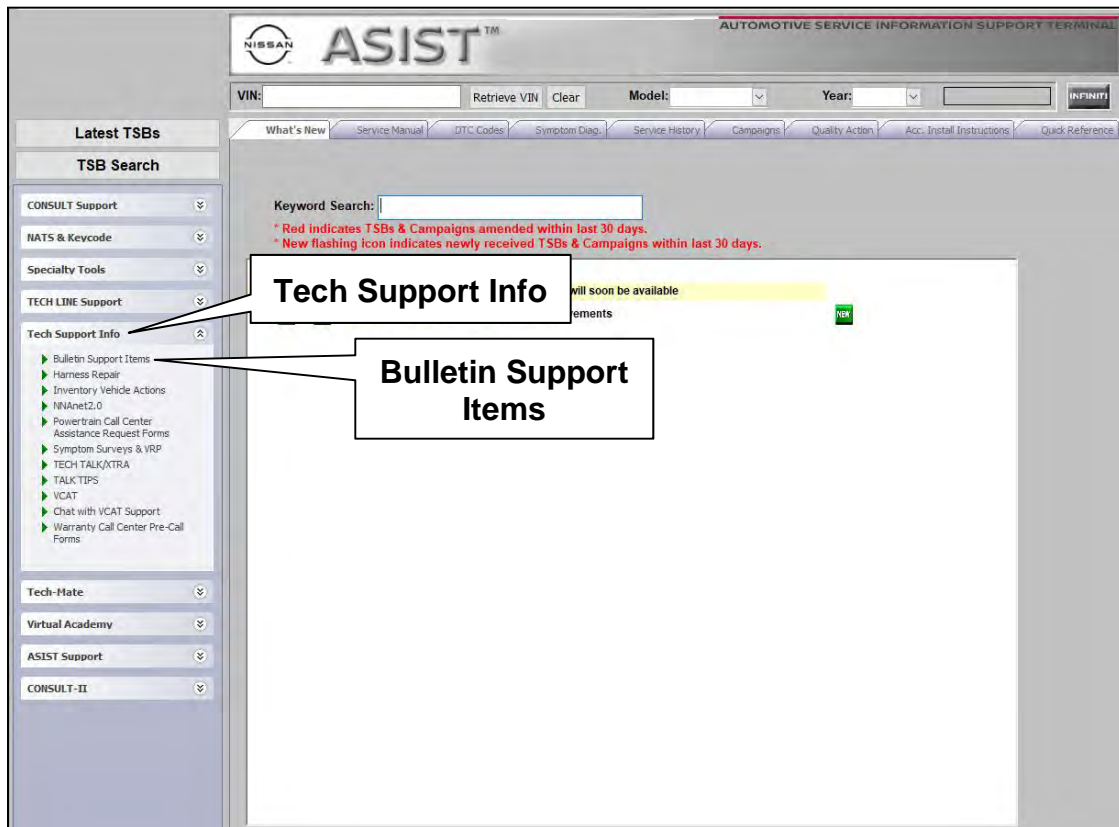


Figure 3

6. Locate and select **R22A3 2013-2016 Pathfinder Hood Lock Assembly**.

R22A3 2013-2016 Pathfinder Hood Lock Assembly

8/18/2022 12:28:01 PM (Mountain Standard Time)

This Form MUST be completed if the secondary hood latch and/or release lever are NG.

Dealer Code:

VIN (17 Characters)

Determine which Secondary hood latch component is sticking.

1. Hold the Secondary Hood Lock to the open position and actuate the Release Lever allowing it to return the fully closed position.

- When the Release Lever is actuated, does the Release Lever return to the fully closed position?

Comments: (255 Characters MAX)

2. Without moving the Release Lever, actuate the Secondary Hood Lock several times to the open position and allow it to return to the closed position.

- When the secondary hood lock is actuated individually, does the secondary hood lock return to the fully closed position?

Comments: (255 Characters MAX)

Figure 4

7. Enter the **Dealer Code** and **VIN**.
8. Follow the steps on the screen and select the appropriate option from the drop down menu.
- Continue to step 9 on page 6 to replace the Secondary Latch, the Hood Lock Assembly, and the Hood Lock Release Cable.

NOTE: It is not necessary to clean and lubricate new parts.

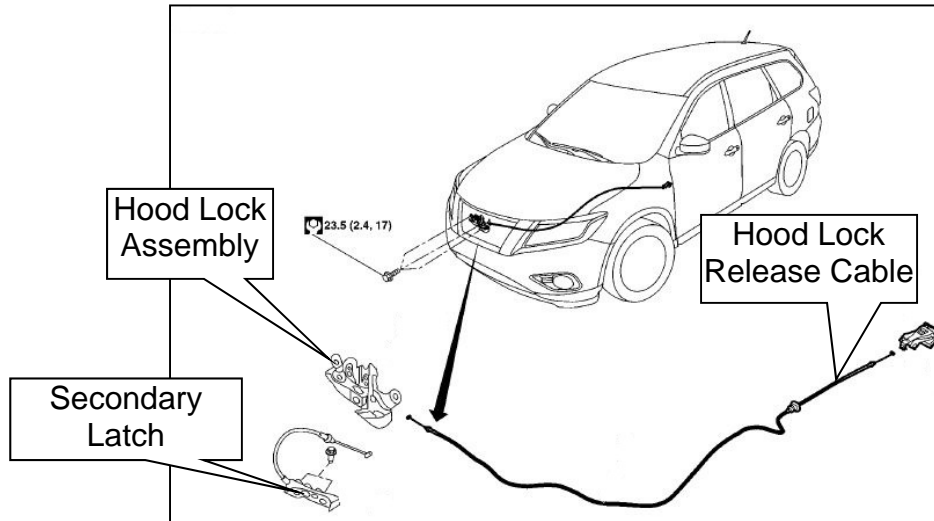


Figure 5

Replace the Secondary Latch

9. Replace the Secondary Latch.

- Refer to the **ESM: BODY EXTERIOR, DOORS, ROOF & VEHICLE SECURITY > DOOR & LOCK > REMOVAL AND INSTALLATION > HOOD LOCK > SECONDARY LATCH: Removal and Installation**

Replace the Hood Lock Assembly

10. Replace the Hood Lock Assembly.

- Refer to the **ESM: BODY EXTERIOR, DOORS, ROOF & VEHICLE SECURITY > DOOR & LOCK > REMOVAL AND INSTALLATION > HOOD LOCK > HOOD LOCK > HOOD LOCK: Removal and Installation**

Replace the Hood Lock Release Cable

11. Replace the Hood Lock Release Cable.

- Refer to the **ESM: BODY EXTERIOR, DOORS, ROOF & VEHICLE SECURITY > DOOR & LOCK > REMOVAL AND INSTALLATION > HOOD LOCK > HOOD LOCK RELEASE CABLE: Removal and Installation**
 - Skip to step 20 on page 9.

IMPORTANT: All replaced parts should be retained for collection via the normal part return process.

Clean and Lubricate the Secondary Latch

12. Place a clean shop rag under the release lever on the Secondary Latch (Figure 6).



Figure 6

13. Remove/clean previous lubricants and debris from the Secondary Latch (Figure 7).

- Use a rust penetrant type cleaner that complies with local regulations.
- Use a spray extension tube to help direct the application.
- Clean the pivot pin area and between the Secondary Latch release lever and its body.
- Wipe excess pooled/dripping rust penetrant with a shop rag prior to performing step 14.



Figure 7

14. Use shop air to blow-dry the Secondary Latch (Figure 8).

CAUTION

To avoid the risk of minor personal injury, be sure to wear appropriate eye protection.



Figure 8

15. Apply non-aerosol white lithium grease to the Secondary Latch (Figure 9).
- Do not use “spray-on” (aerosol) grease.
 - Apply the grease with a small brush.
 - With the brush, work the grease onto the pivot pin area and into the Secondary Latch body.

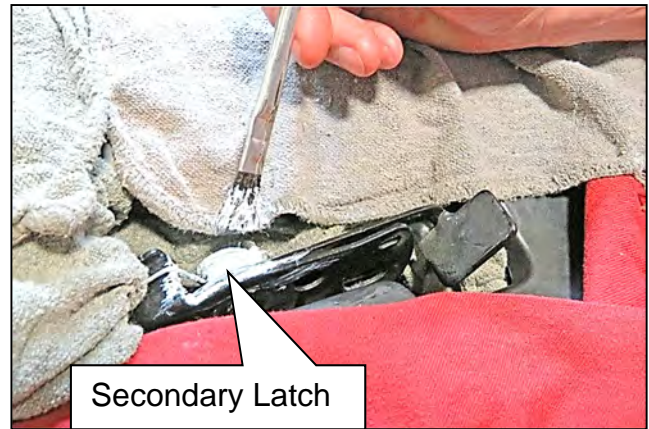


Figure 9

Clean and Lubricate the Hood Lock Assembly

16. Place a clean shop rag under the Hood Lock Assembly (Figure 10).



Figure 10

17. Remove/clean previous lubricants and debris from the Hood Lock Assembly (Figure 11).

- Use a rust penetrant type cleaner that complies with local regulations.
- Use a spray extension tube to help direct the application.
- Clean the pivot pin area and in between the Hood Lock Assembly release lever and its body.
- Wipe excess pooled/dripping rust penetrant with a shop rag prior to performing step 18 on page 9.



Figure 11

18. Use shop air to blow-dry the Hood Lock Assembly (Figure 12).

⚠ CAUTION

To avoid the risk of minor personal injury, be sure to wear appropriate eye protection.



Figure 12

19. Apply non-aerosol white lithium grease to the Hood Lock Assembly (Figure 13).

- Do not use “spray-on” grease.
- Apply the grease with a small brush.
- With the brush, work the grease onto the pivot pin area and into the Hood Lock Assembly body.

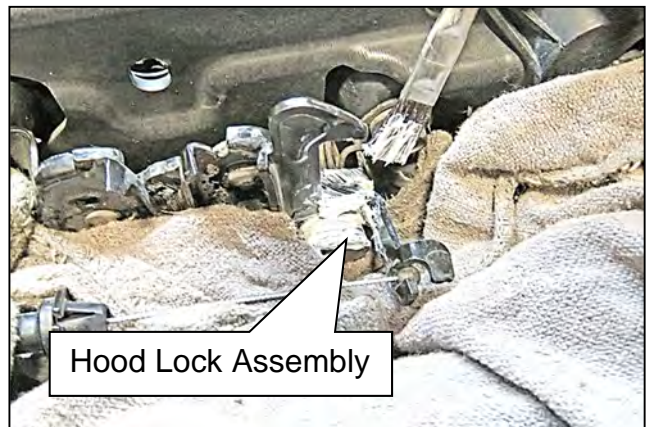


Figure 13

20. Remove any shop rags/fender covers from the vehicle.
21. Lower the hood support rod, secure it, and then close the hood.
22. Return the vehicle to the customer.

PARTS INFORMATION

DESCRIPTION	PART NUMBER	QUANTITY
HOOD LOCK ASSEMBLY (1)	65601-3JA1A	1 As needed
CRANK-BELL, HOOD LOCK (Secondary Latch) (1)	65603-9UA0A	1 As needed
COMPLETE CABLE ASSEMBLY (Hood Lock Release Cable) (1)	65621-3KA2A	1 As needed

(1) All three listed parts should be replaced together.

CLAIMS INFORMATION

Submit a "CM" line claim using the following claims coding:

CAMPAIGN ("CM") ID	DESCRIPTION	OP CODE	FRT
R22A3	Inspect, Clean and Lubricate Secondary Latch and Hood Lock Assembly (OK Condition)	R22A30	0.2
	Inspect, Complete ASIST Form, Replace Secondary Latch, Hood Lock Assembly, and Complete Hood Lock Release Cable Assembly (NG Condition)	R22A32	1.0

AMENDMENT HISTORY

PUBLISHED DATE	REFERENCE	DESCRIPTION
June 23, 2022	NTB22-052	Original bulletin published
August 31, 2022	NTB22-052A	Changes throughout