

<b>Micro Bird Inc.</b>  <b>RECALL CAMPAIGN</b>	<b>TITLE:</b>	<b>GENQ SEAT LEGS SECUREMENT</b>
	<b>TO:</b>	<b>Dealers/Owners</b>
	<b>PRODUCT:</b>	<b>GM Chassis built MBII 2018 to 2020 MY</b>
	<b>FROM:</b>	<b>Specifications and Certification</b>

**PLANNING**

**Description**

The following adjustment procedure is valid for all Micro Bird buses equipped with GenQ seat type (Q230, Q730, Q330, Q236):

LEGS-Q: SIMPLE LEG FOR GENQ SEAT




LEGD-Q: DOUBLE LEG FOR GENQ SEAT

**Manpower**     3 HOURS TOTAL – 2 MEN

***Note:*** *It is recommended to read the entire procedure before performing repairs.*

***Note:*** *The repair explained in this document must be performed according to professionally accepted standards.*

**TOOLING REQUIRED**

Qty	Description	
1	Set of lift (minibus rated)	
1	1100 lb transmission jack	
1	15mm impact socket	
1	5/8" impact socket	
1	11/16 wrench	
1	12" extension	
1	Impact driver	

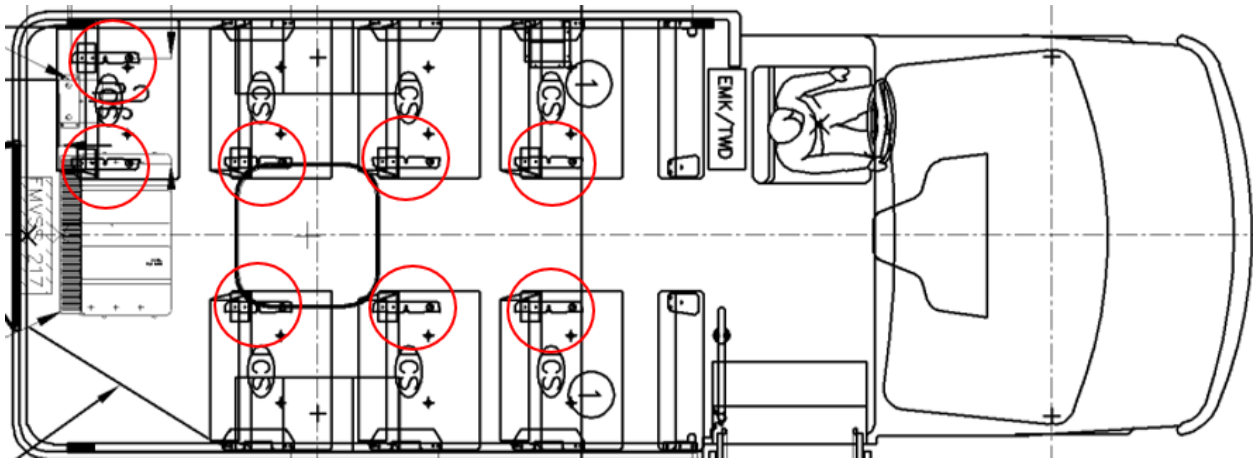
**Parts required**

Qty/leg	Description
3	7/16" Zinc-Plated Steel USS flat washer
3	Flanged 7/16-20 steel zinc plated locknut

**Step1: First Evaluation**

At first you will have to find out if all the legs inside the bus are equipped with flat washers.

The following picture is a representation of how many legs you will have to inspect.



Preliminary Instructions

If you look inside the legs, you should see flat washers under the head of each of the 3 hexagonal screws as shown on Figure 1.



*Figure 1: leg inspection for washers*

If flat washers are missing, you will have to install them. If there is a seat leg above the fuel tank, please follow the entire procedure, otherwise, please skip the steps 4 to 13 and 23 to 25.

**PROCEDURE: Washer installation on Gen Q seat legs**

Step 1

Get the targeted bus inside the garage bay



Step 2

Use an appropriated set of lifts to raise the bus for working under the floor



## Preliminary Instructions

### Step 3

Raise the bus to an appropriate height for working under it stand up



### Step 4

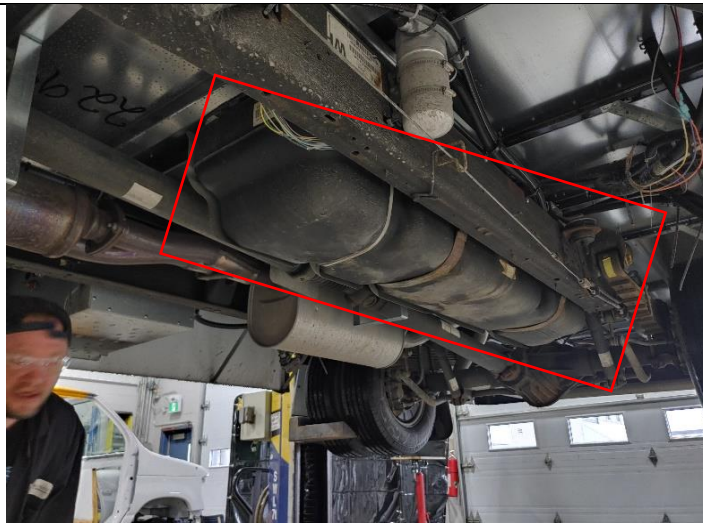
The steps 4 to 13 are the partial removal of the gas tank gain access to the fasteners hidden above the fuel tank



## Preliminary Instructions

### Step 5

The fuel tank of a GMC bus are located on the driver's side behind the driver's seat



### Step 6

Position the transmission jack under the center of the gas tank



## Preliminary Instructions

### Step 7

Raise the jack only to get in contact with the tank (no need to raise it)



### Step 8

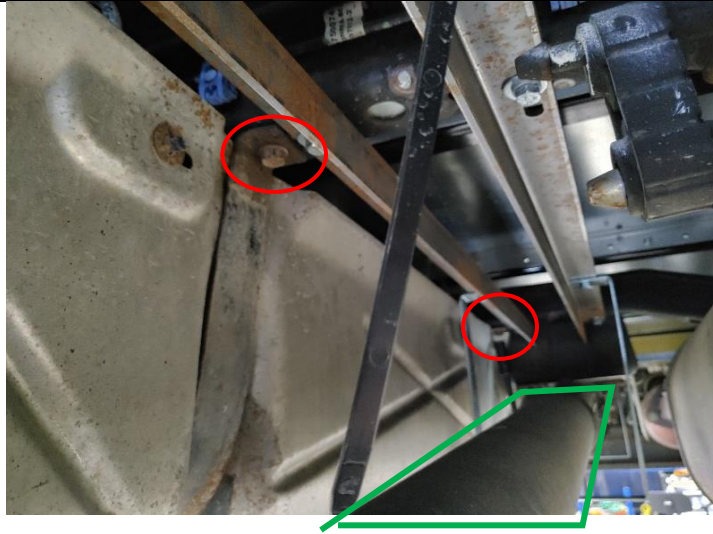
Prepare the 15mm socket with a 12" extension on an impact driver



## Preliminary Instructions

### Step 9

The location of the 2 bolts that need to be removed are located (in red on right picture) near the drive shaft (in green).



### Step 10

Fully loosen bolts of the fuel tank located on step 9





## Preliminary Instructions

### Step 11

Remove and put bolts aside of the fuel tank



### Step 12

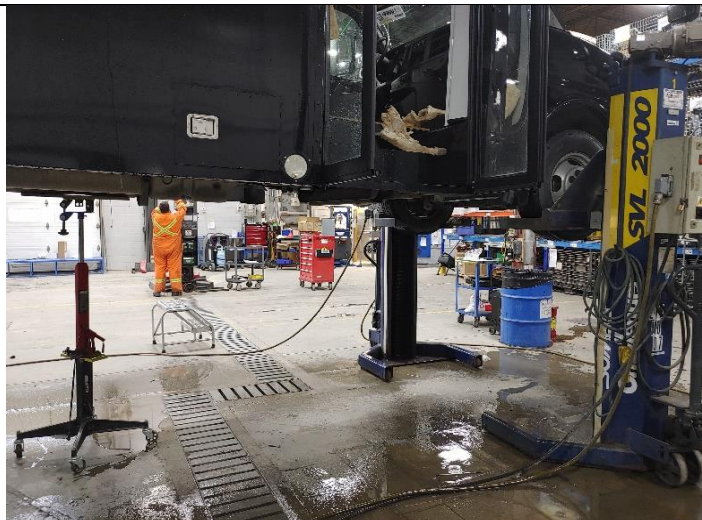
2 options for lowering the tank are possible:

1. Lower the transmission jack

OR

2. Rise the lift

Until the clearance is acceptable, or the tank support its own weight. Do not take away the jack. keep contact with the tank at all times.

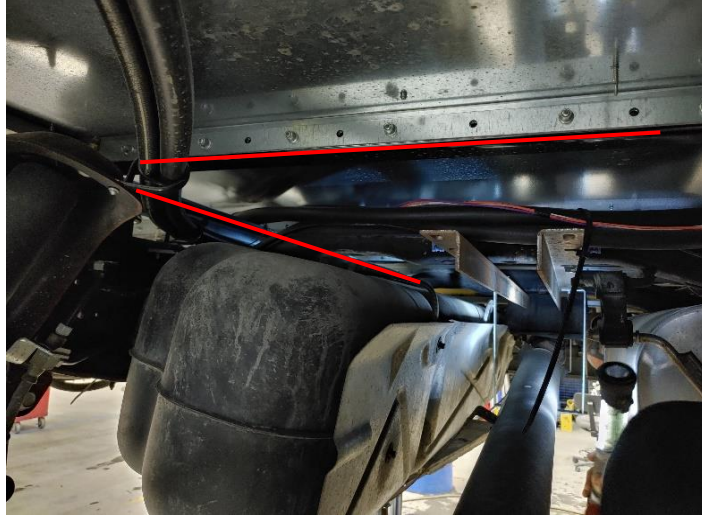


## Preliminary Instructions

### Step 13

The clearance that should be expected for the removal of tank fastener.

Always keep contact between transmission jack and tank.



### Step 14

Prepare the 5/8" socket on the impact driver and the 11/16" wrench



Preliminary Instructions

Step 15

Location of the fastener under the bus.



Step 16

One person shall retain the nut with the 11/16 wrench.



Preliminary Instructions

Step 17

Location of the fastener in the bus



Step 18

One person shall loosen the bolts with the impact driver with the 5/8" socket.



Preliminary Instructions

Step 19

Take out the fastener inside and under the bus.



Step 20

Install the replacement fasteners with washers added as shown (circled in red).



Preliminary Instructions

Step 21

One person shall retain the nut with the 11/16 wrench.



Step 22

One person shall tight the bolts with the impact driver with the 5/8" socket or a standard ratchet between 5 to 10 foot-pounds.

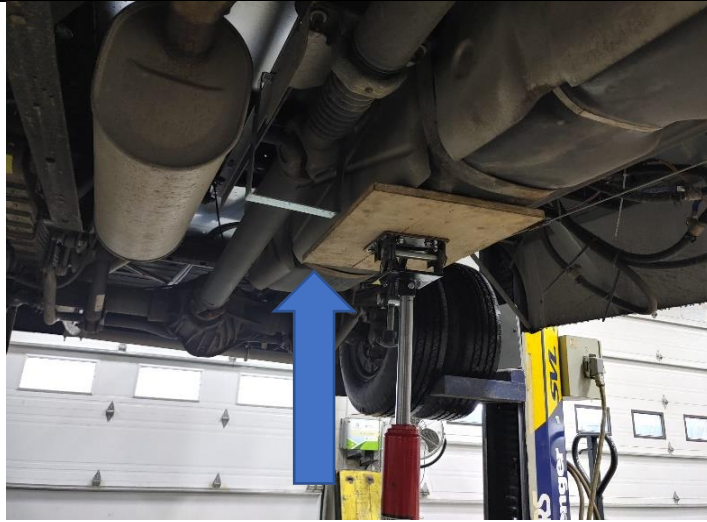


**Repeat the steps 16 to 22 for each seat legs.**

## Preliminary Instructions

### Step 23

With the transmission jack lift put back the fuel tank in position.



### Step 24

Reinstall fasteners to hold the tank with the 12" extension and 15mm socket.



Preliminary Instructions

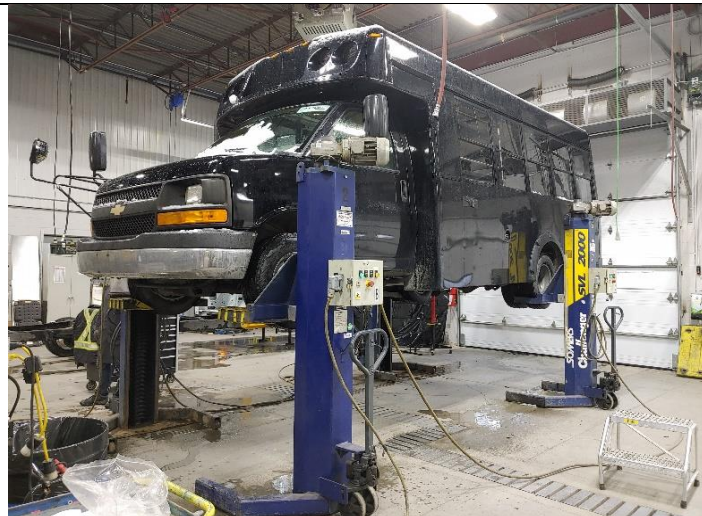
Step 25

When finished lower the transmission jack and remove the jack from under the bus.



Step 26

When all the seat leg fasteners with the washers are replaced, verify that nothing is left under the bus.





Preliminary Instructions

Step 27

Lower the bus to the ground.

