



# Technical Service Bulletin

GROUP <b>RECALL</b>	NUMBER <b>22-01-035H</b>
DATE <b>APRIL 2022</b>	MODEL <b>SANTA FE (TMA) SANTA CRUZ (NXT)</b>

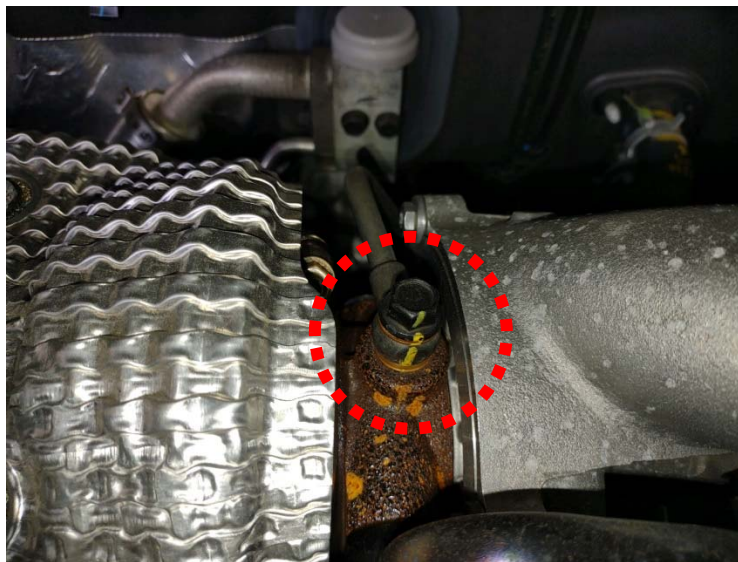
<b>SUBJECT:</b>	TURBO OIL FEED PIPE REPLACEMENT (RECALL 222)
-----------------	--

**\*\*\* Dealer Stock and Retail Vehicles \*\*\***

As required by federal law, dealers must not deliver new vehicles for sale or for lease to customers until all open recalls have been performed. Dealers must also perform all open recalls on used vehicles, demo, and rental vehicles prior to placing them into customer use and whenever an affected vehicle is in the shop for any maintenance or repair.

When a vehicle arrives at the Service Department, access the "Vehicle Information" screen via WEBDCS to identify open Recalls.

**Description:** On certain 2022MY Santa Fe (TMA) and Santa Cruz (NXT) vehicles equipped with 2.5T engines, the turbo oil feed tube may be cracked at the fitting on the turbo which may result in an oil leak. Engine oil exposed to certain hot surfaces in the engine compartment could ignite and increase the risk of a fire. Follow the service procedure to identify and replace the turbo oil feed pipe.



**Applicable Vehicles:**

MODEL	PRODUCTION DATE RANGE
Certain 2022 Santa Fe (TMA) w/ 2.5T engines	March 3, 2022 - March 7, 2022
Certain 2022 Santa Cruz (NXT) w/ 2.5T engines	March 2, 2022 - March 7, 2022

**Parts Information:**

PART NAME	PART NUMBER	QTY
PIPE ASSY-OIL FEED	28240-2S304	1

**Warranty Information:**

MODEL	OP CODE	OPERATION	OP TIME	CAUSAL P/N	NATURE CODE	CAUSE CODE
Santa Cruz (NXT)	21DA10R1	Turbo Oil Feed Pipe Replacement	1.6	28240-2S304	B25	ZZ4
Santa Fe (TMA)	21DA10R2	Turbo Oil Feed Pipe Replacement	1.3			

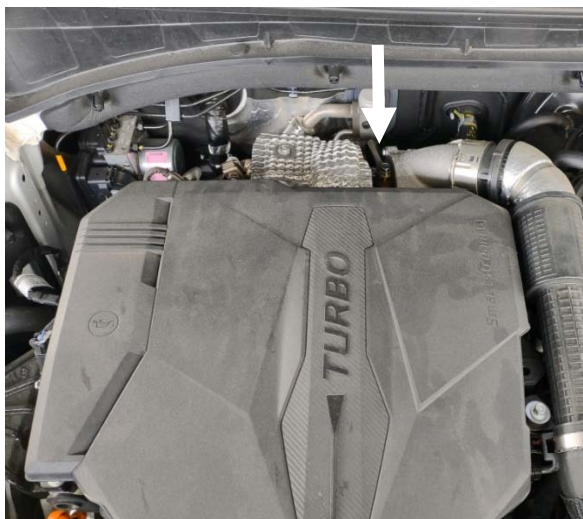
**NOTE 1:** Submit claim on Campaign Claim Entry Screen

**NOTE 2:** If a part that is not covered by this recall is in need of replacement while performing this recall, and the affected part is still under warranty, please submit a separate claim using the same repair order. If the affected part is out of warranty, submit a prior approval request for goodwill consideration prior to performing the work.

**NOTE 3:** The incident parts are subject to callback through the normal Warranty Technical Center (WTC) parts return process.

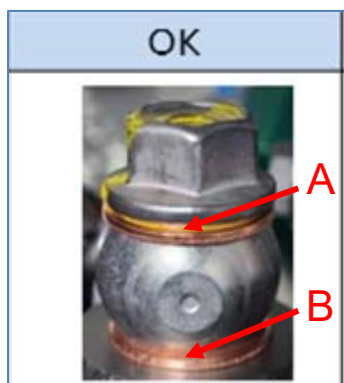
**Service Procedure:**

1. Open the hood and identify the oil feed pipe fitting on the top side of the turbocharger assembly.



2. The indicated area is the oil feed pipe fitting portion of the turbocharger.

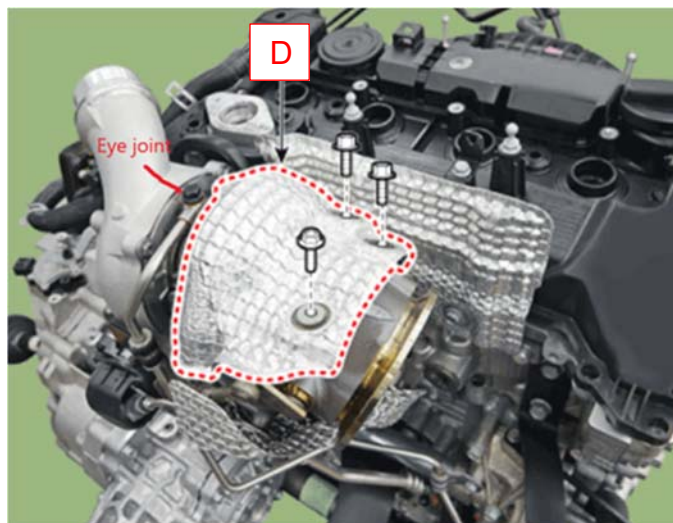
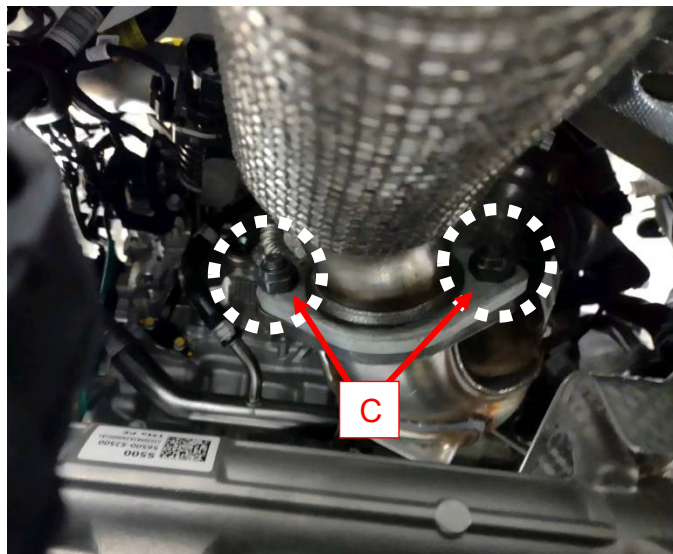
**NOTE:** During reassembly, be sure to position the copper gasket (A and B) above and below the new oil feed pipe banjo fitting as shown below.



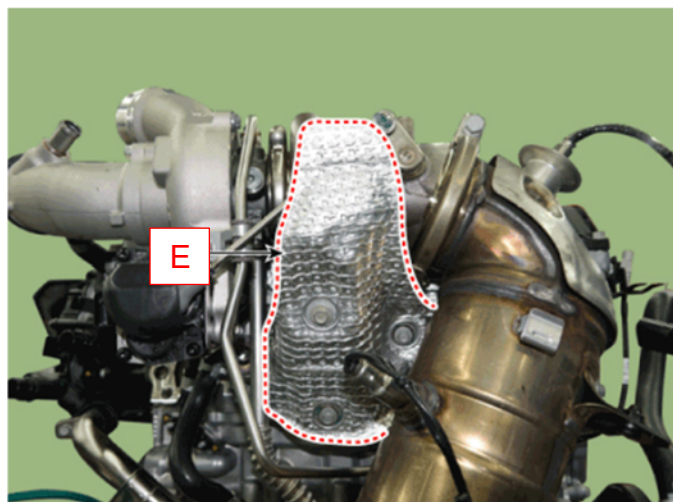
3. Turn off the ignition switch and disconnect the battery (-) terminal.

**NOTE:** Be sure to record the radio presets prior to battery disconnection.

4. Remove the engine cover.  
(Refer to the Engine And Transaxle Assembly - "Engine Cover")
5. Remove the engine room under cover.  
(Refer to the Engine And Transaxle Assembly - "Engine Room Under Cover")
6. Remove the front muffler Front muffler mounting nuts (C).  
(Refer to the Intake And Exhaust System - "Muffler")
7. Remove the upper heat protector (D).



8. Remove the lower heat protector (E).



9. Remove the V-clamp (F), and then remove the Warm-Up Catalytic Converter (G).
10. Remove the old oil feed pipe (H) and replace it with a new oil feed pipe.

**Tightening Torque:**

- Eyebolt (I) 29.5 Nm (22 lb-ft)

**NOTE:** During reassembly, be sure to position the copper gasket (A and B) above and below the new oil feed pipe banjo fitting as shown below.



- Mounting Nut (J) 9.8 Nm (7 lb-ft)
- Bracket Bolt (K) 10.8 Nm (8 lb-ft)

11. Reinstall all components in reverse order.
12. Reconnect the battery (-) terminal.

**NOTE:** Reprogram the radio presets recorded from Service Procedure Step 3.

13. Start the engine and confirm all function is normal with no warning lights ON.
14. Follow normal part return process to return replaced parts to WTC.

