



7945 N. ALGER ROAD  
ALMA, MICHIGAN 48801

**SECOND NOTIFICATION**  
**IMPORTANT SAFETY RECALL #22V113**

June 13, 2022

---

This Notice applies to your trailer VIN listed above.

This notice is sent to you in accordance with the requirements of the *Motor Vehicle Safety Act*. This notice is also sent to you in accordance with the requirements of the *National Traffic and Motor Vehicle Safety Act*. Legend Manufacturing. LEGEND MANUFACTURING'S Corporate Recall Officer has decided that a defect, which relates to trailer safety, exists in certain 2022 Thunder V-Nose and Explorer V-Nose cargo trailers. This is to inform you that your trailer may contain a defect that could affect the safety of a person(s).

This recall is being made with the knowledge of the National Highway Traffic Safety Administration (NHTSA) and has been initiated due to a coupler recall by Pacific Rim International LLC/Pacific Trailer Products, Inc.

**WHAT IS THE DEFECT/NONCOMPLIANCE?**

The coupler may not have been not properly welded by vendor; this could lead to vehicle separation.

**EVALUATION OF THE RISK TO THE TRAILER AND OPERATOR(S) RELATED TO THE RECALL.**

If the coupler fails and the trailer separates from the tow vehicle, this could lead to a crash, injury and/or property damage.

**WHAT IS LEGEND MANUFACTURING AND OUR DEALERSHIPS GOING TO DO?**

LEGEND MANUFACTURING is notifying dealerships of the recall. You may have the recall corrected at any LEGEND MANUFACTURING dealership. However, it is preferable if you have your selling dealership perform the remedy. The remedy will include inspection of the coupler for missing welds and if any are found, the coupler will be replaced. LEGEND MANUFACTURING completely covers your cost for the remedy; you will not be invoiced for any cost(s) relating to the above recall number.



7945 N. ALGER ROAD  
ALMA, MICHIGAN 48801

## **SECOND NOTIFICATION**

### **IMPORTANT SAFETY RECALL #22V113**

#### **WHAT SHOULD YOU DO?**

Using your phone or digital camera, take a picture of the bottom side of the coupler and sent it to the Warranty Manager at LEGEND MANUFACTURING at:

[npitcher@legendmfginc.com](mailto:npitcher@legendmfginc.com).

Provide your phone number, VIN number and an appropriate time for the Warranty Manager to call you with a decision regarding the integrity of the coupler.

If our Warranty Manager is not able to determine the weld's integrity, you will be instructed to contact your dealer and request a service representative come to your location and inspect and if required, replace the coupler at no charge to you. The trailer owner is responsible for arranging to have the work completed. Please state you have been notified by LEGEND MANUFACTURING regarding this recall and provide the recall number (your trailer's VIN number) to the dealership. You may also visit [www.legendmfginc.com](http://www.legendmfginc.com) for dealer locations.

#### **HOW LONG WILL THE REMEDY PROCESS TAKE?**

The estimated time of repair is 2.0 hours. However, the dealership may need to arrange an appointment that fits into their service schedule.

#### **WHAT IF YOU HAVE PREVIOUSLY PAID FOR REPAIRS TO YOUR TRAILER FOR THIS PARTICULAR CONDITION?**

If you have already paid for a repair that is within the scope of this defect under recall, you still need to have this recall inspected and/or performed to ensure the correct parts and procedures were utilized.

Additionally, you may be eligible for a refund of previously paid repairs. Refunds will only be provided for within the scope of this defect under recall.

Please send the service invoice to the following address: LEGEND MANUFACTURING, INC., Attention: Warranty Manager, 7945 N. Alger Road, Alma, Michigan 48801.

If you still cannot obtain satisfaction, you may file a complaint with: The Administrator, National Highway Traffic Safety Administration, 1200 New Jersey Avenue, SE., Washington, DC 20590; or call the toll-free Vehicle Safety Hotline at 1-888-327-4236 (TTY: 1-800-424-9153); or go to <http://www.safercar.gov>.

We apologize for any inconvenience this may cause you. If you have any questions, please call our Warranty Manager at 989-227-0800, extension 253.

Sincerely,  
LEGEND MANUFACTURING, INC.

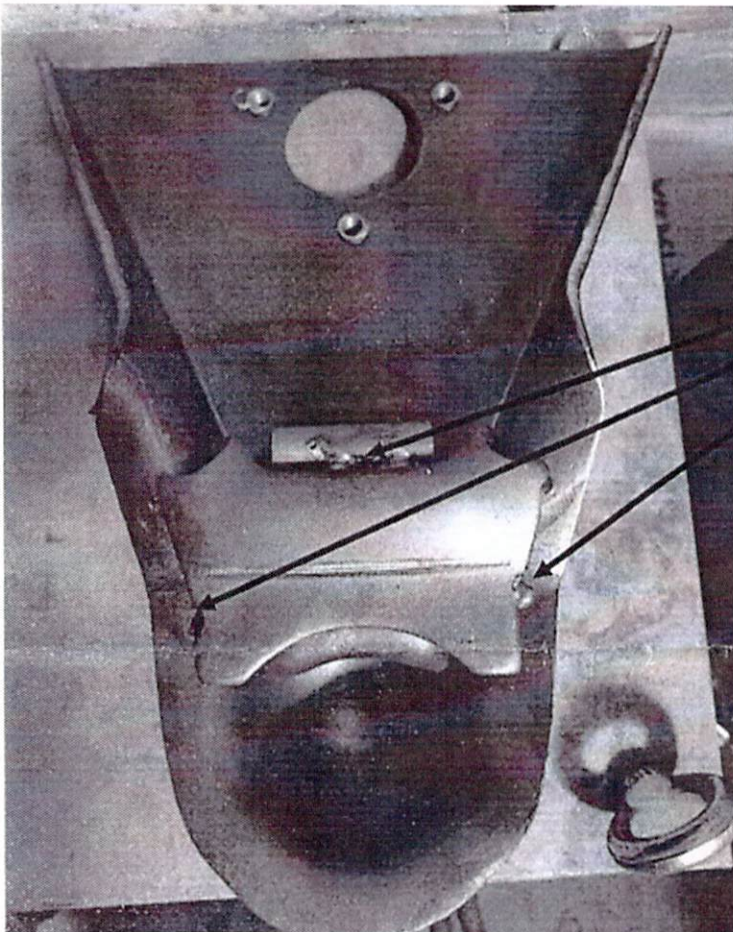
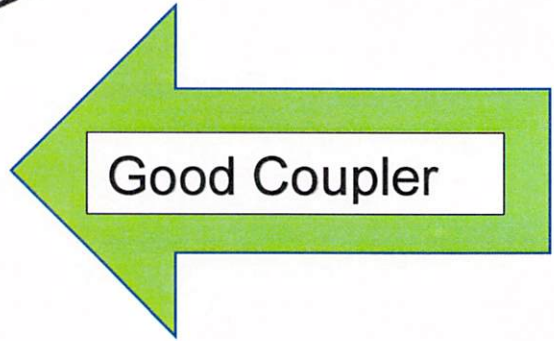
*Charles Lange*

President / Corporate Recall Officer





Normal Welds On Coupler up  
the entire length of the bottom  
ball clamp



If any spot welds like on this  
coupler, these need to be  
pulled out of inventory and not  
used.

