

Recall Campaign Bulletin



Mercedes-Benz

Campaign No. 2022030007, March 2022

TO: ALL MERCEDES-BENZ CENTERS

SUBJECT: **Model GLB-Class (247 platform)**
Model Year 2021

Check Driver Airbag Module

Mercedes-Benz AG (“MBAG”), the manufacturer of Mercedes-Benz vehicles, has determined that certain MY21 GLB-Class (247 platform) vehicles might not be equipped with the driver airbag module according to current production specifications. Depending on the driver airbag module installed, different consequences could result when the airbag deploys. If the driver airbag deploys, it might not provide its restraint function as intended. In addition, the airbag module might detach from its mounting location within the steering wheel hub during deployment and potentially contact occupants. Thus, in the event of a crash with a driver airbag deployment, the risk of injury to the occupants might be increased. An authorized Mercedes-Benz dealer will check and replace the driver airbag module on the affected vehicles, if necessary.

Prior to performing this Campaign:

- **VMI must always be checked before performing campaigns to verify that the campaign is required on a specific vehicle. Always check for any other open campaigns, and perform accordingly.**
- Please review the entire Campaign bulletin and follow the repair procedure exactly as described.

Approximately 50 vehicles are affected.

Order No. P-RC- 2022030007

This bulletin has been created and maintained in accordance with MBUSA-SLP S423QH001, Document and Data Control, and MBUSA-SLP S424HH001, Control of Quality Record

Recall Campaign Bulletin

Recall Campaign Bulletin

Recall Campaign Bulletin

Recall Campaign Bulletin

Recall Campaign Bulletin

Check driver's airbag, replace if necessary

Model 247

Check/test procedure

1. Remove driver's airbag.

i For basic data, see **AR91.60-P-0663MFA**.

2. Determine part number of driver's airbag in the XENTRY Portal "parts process" and compare with the item number of the removed driver's airbag (**A, figure 1**).

i The determined part number from the parts process **must** match with the part number of the installed driver's airbag.

i When removing the driver's airbag for the first time, the right and left opening at the steering wheel must be pierced. Extreme caution is required to avoid causing damage to the area or personal injury

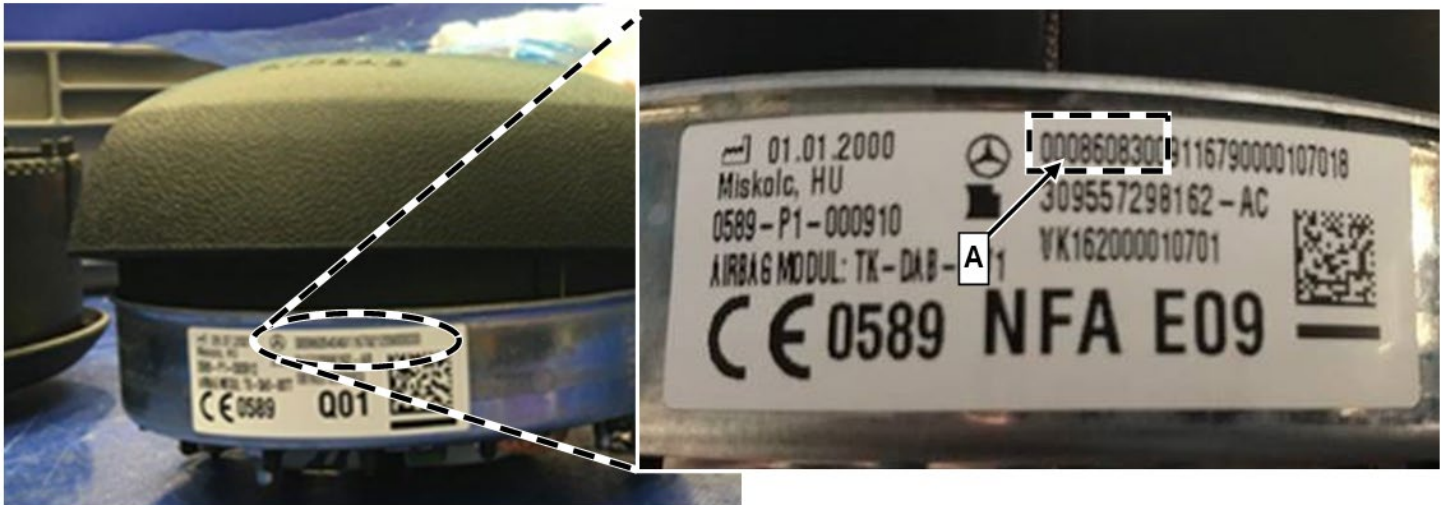


Figure 1

- a. Determined part number from the parts process does **not** match with the installed part number: Perform **work procedure**.
- b. Determined part number from the parts process matches with the installed part number: **End measure**.

Work Procedure

1. Replace driver's airbag according to **AR91.60-P-0663MFA**.
-

Primary Parts Information

Qty.	Part Name	Part Number
As required	Driver's airbag	*

* The replacement parts must be determined according to the equipment variant for the vehicle identification number via the parts process in the Xentry Portal.

i Small parts such as screws/bolts, lock nuts, sealing rings, cable ties, fluids, sealant, etc. are not listed in the parts list. The required small parts are taken into account in the budgeting.

i **Note:** The following allowable labor operation should be used when submitting a warranty claim for this repair:

Warranty Information

Damage Code	Operation Number	Description	Labor Time (hrs.)
91 931 15	02-0425	Check driver's airbag Includes: Disconnect/connect ground line	0.4
	02-0426	Replace driver's airbag (after check)	0.1

i **Note:** Always check ASRA for the current OP-Code times. Labor times are subject to change and updates may not be reflected in this document.