



GROUP	MODEL
FMVSS Noncompliance Recall Campaign	2020MY Cadenza (YG) w/Technology Trim
NUMBER	DATE
SC225	March 2022

FMVSS NONCOMPLIANCE RECALL CAMPAIGN

REAR POWER WINDOW OPERATION LOGIC IMPROVEMENT (SC225)

SUBJECT:

This bulletin provides the procedure to update the software logic for the rear power window operation in the Driver Door Module (DDM) system on certain 2020MY Cadenza (YG) vehicles, produced from April 1, 2020 through October 15, 2020, equipped with the "Technology" Trim Package. The logic that deactivates rear power window operation after the ignition is turned 'OFF' and a front door is opened was not applied to the subject vehicles. As a result, the rear power windows can be operated by the driver's power window main switch even after the ignition has been turned 'OFF' and a front door is opened. Due to this condition, the subject vehicles do not comply with the operating requirements of Federal Motor Vehicle Safety Standard (FMVSS) 118, "Power-Operated Window Systems". The ability to operate the rear power windows after the ignition switch is turned 'OFF' and a front door is opened increases the risk of injury due to accidental or unintentional operation. Follow the procedure outlined in this publication to apply the improved logic to the 'DDM' system using the KDS ECU Upgrade function as described in this bulletin. For confirmation that the latest reflash has been applied to a vehicle you are working on, verify the ROM ID using the table on page 2 of this bulletin. Before conducting the procedure, verify the vehicle is included in the list of affected VINs.

NOTICE

To assure complete customer satisfaction, always remember to refer to WebDCS Warranty Coverage (validation) Inquiry Screen (Service → Warranty Coverage → Warranty Coverage Inquiry) for a list of any additional campaigns that may need to be performed on the vehicle before returning it to the customer.

NOTICE

There is no charge to the vehicle owner for this repair. Under applicable law, you may not sell or otherwise deliver any affected vehicle until it has been repaired pursuant to the procedures set forth in this bulletin.

ECU Upgrade Procedure:

To correct this condition, the ECU should be reprogrammed using the KDS download, as described in this bulletin.

Upgrade Event Name

600. YG PE DDM UPGRADE FOR REAR WINDOW OPERATION


NOTICE

- Confirm a **fully charged battery** (12.3 volts or higher is necessary) is used or utilize a fully charged jump starter box connected to the battery.
- **Ensure the KDS is sufficiently charged at 60% or higher prior to reflash.**
- All ECU upgrades must be performed with the ignition set to the 'ON' position unless otherwise stated.
- **Damaged VCI II units should not be used and promptly replaced.**
- Be careful not to disconnect the VCI-II connected to the vehicle during the ECU upgrade procedure.
- **DO NOT start the engine during ECU upgrade.**
- **DO NOT** turn the ignition key 'OFF' or interrupt the power supply during ECU upgrade.
- **When the ECU upgrade is completed, turn the ignition 'OFF' and wait 10 seconds before starting the engine.**
- **ONLY** use approved ECU upgrade software designated for the correct application.

IMPORTANT

It is recommended to ALWAYS check the Electronic Parts Catalog (EPC) to locate the ECU Part Number respective to Auto/Manual Mode ROM IDs. DO NOT reference the parts label affixed to the ECU.

NOTICE

Before attempting an ECU upgrade on any Kia model, make sure to first determine whether the applicable model is equipped with an immobilizer  security system. Failure to follow proper procedures may cause the PCM to become inoperative after the upgrade and any claims associated with this repair may be subject to chargeback.

ROM ID INFORMATION TABLE:

Upgrade Event #600

Model	System	ECU P/No.	Software Version	
			Previous	New
YG w/Technology Trim Package	DDM (Driver Door Module)	93570 F6050	1.00	1.01
		93570 F6070		
		93570 F6080		
		93570 F6150		
		93570 F6170		
		93570 F6180		

To verify the vehicle is affected, be sure to check the Calibration Identification of the vehicle's ECM ROM ID and reference the Information Table as necessary.

SUBJECT:

REAR POWER WINDOW OPERATION LOGIC IMPROVEMENT (SC225)

NOTICE

Prior to performing the ECU upgrade, be sure to check that the KDS is fully charged.

1. Connect the VCI-II to the OBD-II connector, located under the driver's side of the instrument panel.

NOTICE

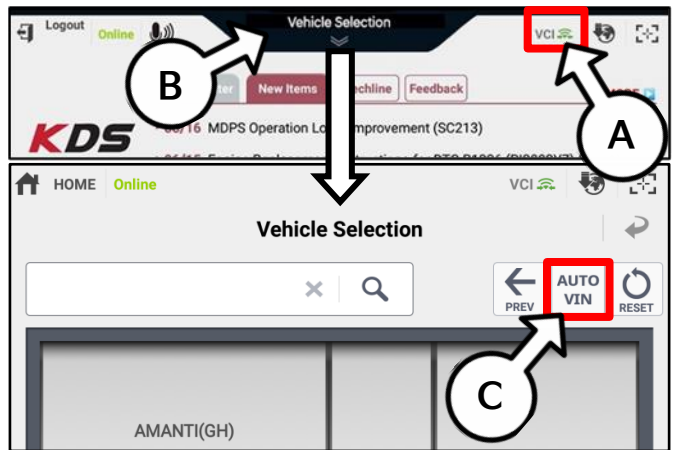
The ECU upgrade function on KDS operates wirelessly. It is not necessary to perform the upgrade via USB cable.



2. With the ignition ON, turn ON the KDS tablet. Select 'KDS' from the home screen.



3. Confirm communication with VCI (A) and then configure the vehicle (B) using the 'AUTO VIN' (C) feature.



4. Select 'ECU Upgrade'.



SUBJECT:

REAR POWER WINDOW OPERATION LOGIC IMPROVEMENT (SC225)

- The KDS will check the server for recently uploaded Events and then automatically download Upgrade Event #600.

NOTICE

The vehicle must be identified in Vehicle Selection to download an Event for that vehicle.

After the download is complete, the program will shut down to install. Please wait until the program restarts.

Event	Status
271.QF 2.4GDI DTC P0171,P0420 LOGIC IMPROVEMENT	Downloading
273.TF 2.4GDI DTC P0171,P0420 LOGIC IMPROVEMENT	Ready

36%

Do not touch any system buttons while performing this function.

KDS screenshot shown above is for demonstration purposes only. Events shown in screenshot are not applicable to this bulletin.

- Select Auto Mode.

CAUTION

Do NOT attempt to perform a Manual Mode upgrade UNLESS Auto Mode fails. Always follow the instructions given on the KDS in either Auto or Manual mode.



- Select the DDM (D) system under the System selection menu. Confirm that the latest update is available.

Select Upgrade Event #600 and select Upgrade to continue.

ECU Upgrade

CADENZA(YG) > 2021 > G 3.3 GDI LAMBDA II

System

DDM

Event Group

600.YG PE DDM UPGRADE FOR REAR WINDOW OPERATION

YG PE DDM : 93570 - F6050/070/080/150/170/180

- The ECU upgrade will begin and the progress of the upgrade will appear on the bar graph. Upgrade part (1/2) (E) will download the upgrade event to the VCI-II. Upgrade part (2/2) (F) will upgrade the ECU.

CAUTION

Do not touch the system buttons (like 'Back', 'Home', 'etc.') while performing ECU Upgrade.

E

23%

ECU Upgrading...(1/2)

ECU is in the process of being upgraded. Please wait a few minute.

F

6%

ECU Upgrading...(2/2)

ECU is in the process of being upgraded. Please wait a few minute.



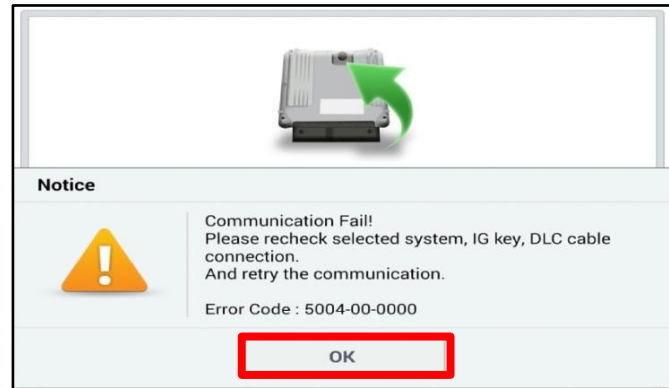
SUBJECT:

REAR POWER WINDOW OPERATION LOGIC IMPROVEMENT (SC225)

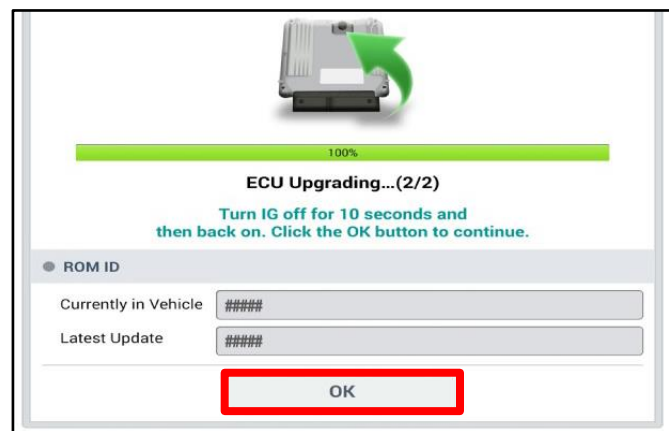
9. If a "Communication Fail" screen appears, verify that the VCI-II and KDS are communicating properly. Select 'OK' and restart the procedure from step 4.

 **NOTICE**

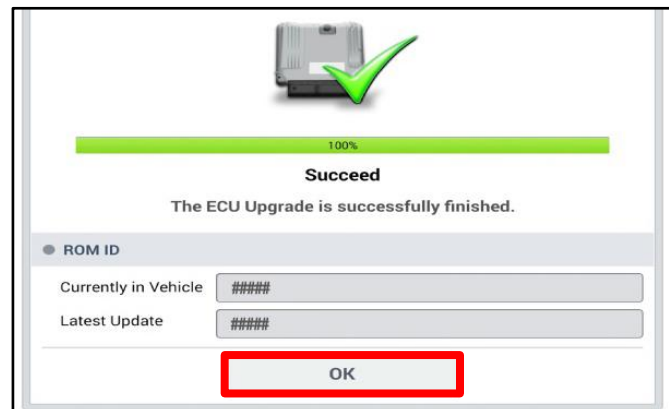
If an error notice continues to appear or if the upgrade cannot be performed, DO NOT disconnect the KDS/VCI-II. Contact GIT America Help Desk at (888) 542-4371 or Techline.



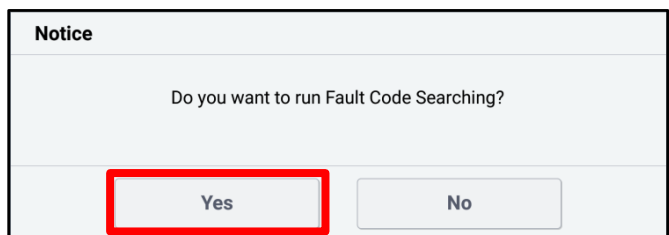
10. When instructed on the KDS, turn the ignition OFF for ten (10) seconds then back on. Select 'OK' to continue.



11. Once the upgrade is complete, select 'OK' to finalize the procedure.



12. When prompted, select 'YES' to check for Diagnostic Trouble Codes (DTC) and erase any DTCs stored such as EPS, ESC, and TPMS that may have been set during the upgrade.



13. Start the engine to confirm normal operation of the vehicle.

Manual Upgrade Procedure:

 NOTICE

The manual upgrade should **ONLY** be performed if the automatic upgrade fails.

If the automatic upgrade fails, turn the ignition 'OFF' for about 10 seconds then place it back in the 'ON' position to reset the control unit BEFORE performing manual upgrade.

See table below for 'Manual Mode' passwords.

Manual Mode ECU Upgrade Passwords

Menu	Password
YG PE DDM : 93570-F6050/070/080/150/170/180	0180

1. Within the ECU Upgrade screen displayed, select **Manual Mode**.
2. Select the **DDM** system under the System selection menu. Select **Upgrade Event #600** and select **Upgrade** to continue.
3. Select the appropriate control unit part number with reference to the ROM ID Information Table on page 2, and select **OK**.
4. Enter the appropriate password from the Manual Mode password table above and select **OK**.
5. The upgrade will begin and the progress of the upgrade will appear on the bar graph.
6. When instructed on the KDS, turn the ignition **OFF** for ten (10) seconds then back on. Select **OK**.
7. Once the upgrade is complete, select **OK** to finalize the procedure.
8. When prompted, select **YES** to check for Diagnostic Trouble Codes (DTC) and erase any DTCs stored such as EPS, ESC, and TPMS that may have been set during the upgrade.
9. Start the engine to confirm proper operation of the vehicle.

SUBJECT: REAR POWER WINDOW OPERATION LOGIC IMPROVEMENT (SC225)
AFFECTED VEHICLE RANGE:

Model	Production Date Range
Cadenza (YG)	April 1, 2020 to October 15, 2020

REQUIRED TOOL:

Tool Name	Figure	Comments
KDS		Kia Diagnostic System

WARRANTY INFORMATION:
N Code: N99 C Code: C99

Claim Type	Causal P/N	Qty.	Repair Description	Labor Op Code	Op Time	Replacement P/N	Qty.
R	82471 F6010	0	(SC225) DDM Software Upgrade	221020R0	0.3 M/H	N/A	0

NOTICE

VIN inquiry data for this repair is provided for tracking purposes only. Kia retailers should reference SC225 when accessing the WebDCS system.