

Subframe Hoist Rear Mount Inspection

Purpose: Inspect the installation of the subframe hoist's rear mount to the chassis frame, specifically looking for proper bolting and/ or welding practices.

Background: Incorrect or inadequate fastening methods can lead to failure of the rear mount.

Inspection Procedure:

SAFETY: Please use safety glasses and gloves during the inspection.

TOOLS: Flashlight, camera.

- 1.) Take pictures of the rear fastening location of subframe hoist, driver side and passenger side. Please be sure to capture all areas where the rear of the hoist is fastened to the frame. Examples:



Fig. 1

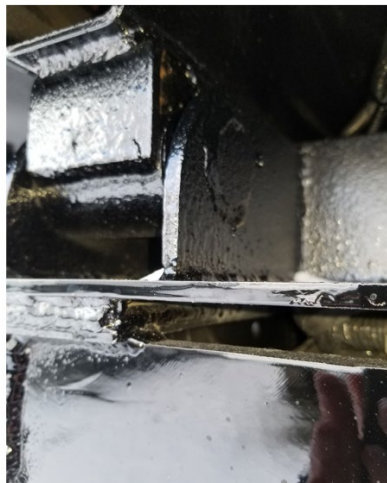
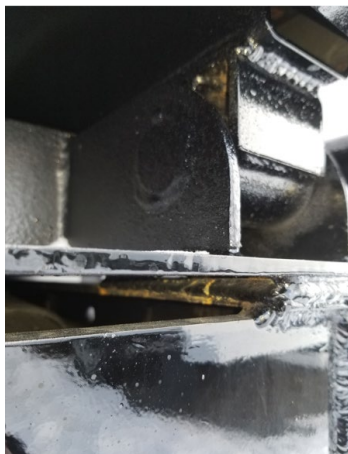


Fig. 2



Fig. 3



- 2.) Navigate to the Reading Truck website and begin a warranty claim - <https://www.readingtruck.com/owners/warranty/>. Be sure to completely fill out all required information, including the VIN. Please also type "TSB 22-01" in the Claim Details section as shown below:

STEP TWO**TELL US ABOUT YOUR VEHICLE...**

Truck Body Serial Number

XXXXXXXXXXXX

Truck Body Color

Black

Date of Purchase

mm/dd/yyyy



Chassis VIN (Vehicle Identification Number)

XXXXXXXXXXXX

Mileage

25000

CLAIM DETAILS

Describe the Issue

TSB 22-01

- 3.) Attach the photos of the rear fastening points to the claim and submit.

Drop files here or [SELECT FILES](#)

Max. file size: 1 GB, Max. files: 8.

*Please Upload at least 2 Images***SUBMIT**

Next Steps: Reading Truck will evaluate the installation and provide a response within () business days. If the installation is acceptable the unit may continue in service. If the unit needs modifications a Reading representative will reach out to set up a repair.